



External ProjectWise Access

OVERVIEW

The ProjectWise Gateway Service is used to enable external ProjectWise Explorer clients (individuals located outside the company's firewall including consultants and MnDOT employees) to reach a ProjectWise Integration Server residing on the secure local network inside the MnDOT firewall.

Notes:

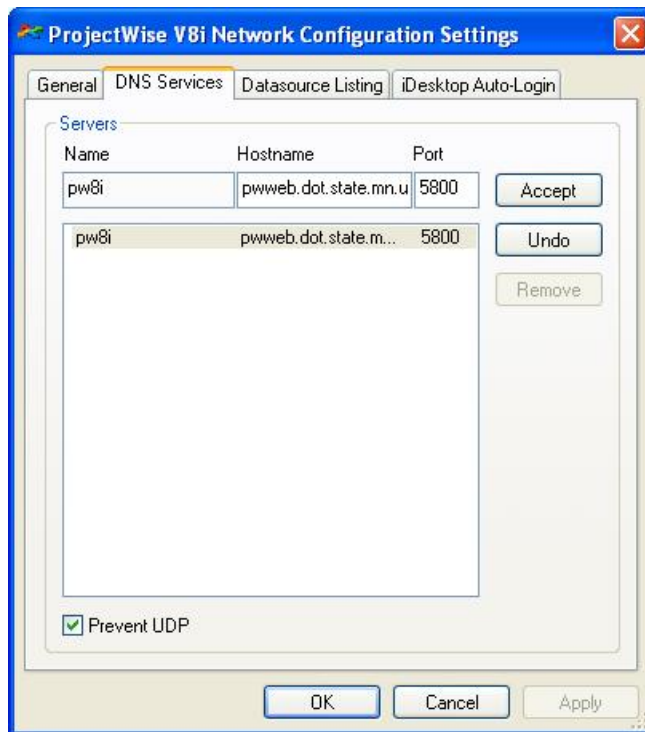
- Communication is through port 5800, so ensure that your firewall has this port open.
- For credentials to ProjectWise at MnDOT, contact your MnDOT project Manager.

LICENSING

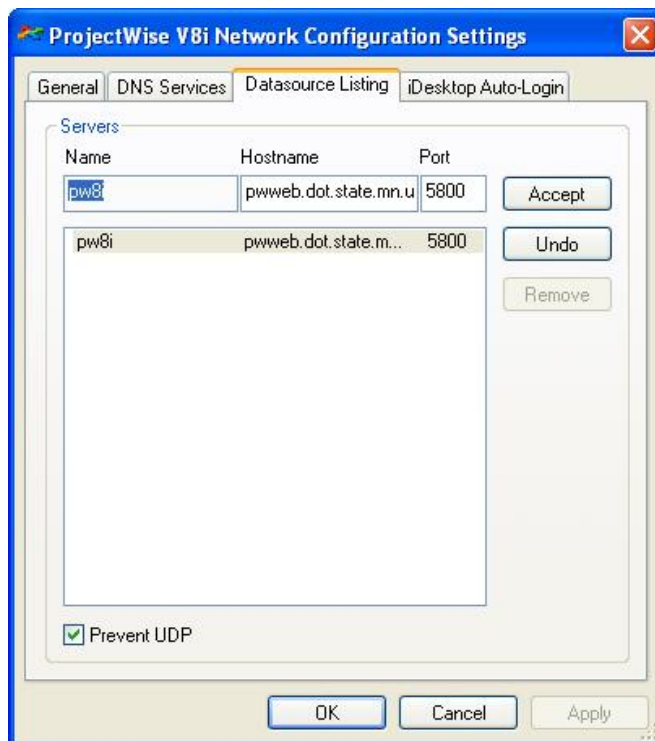
ProjectWise licensing will be the responsibility of the consultants using the ProjectWise Gateway. If they already have a license for ProjectWise, it will be used. Otherwise, they can be purchased or leased by contacting Bentley. Please review this web site for licensing (passport subscription) <http://www.bentley.com/en-US/Subscriptions/Bentley%20Passport/>

SETUP

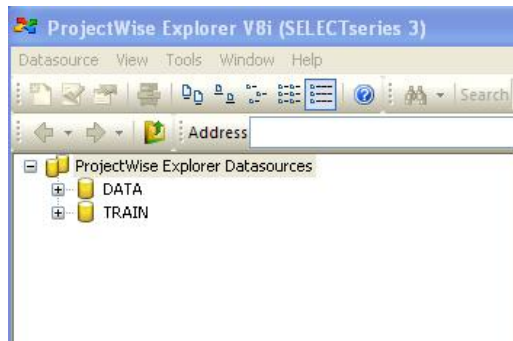
1. Install ProjectWise Explorer Select Series 2 or 3 (SS2 or SS3).
2. Open the Control Panel > ProjectWise V8i Network.
3. Click on the DNS Services Tab and set as shown here.
 - a. Name: Any name
 - b. Hostname: pwweb.dot.state.mn.us
 - c. Port: 5800
 - d. Check "Prevent UDP".



4. Click Add.
5. Click the Datasource Listing tab and repeat steps 3 & 4.



6. Click OK.
7. Launch ProjectWise Explorer and you should see the two MnDOT datasources.



8. Login to the "DATA" datasource with the credentials provided by your MnDOT project manager to see project data.