



# Memo

Office of Technical Support  
Estimating Unit  
Mail Stop 692  
395 John Ireland Boulevard  
St. Paul, MN 55155

Office Tel:(651) 296-0807  
Fax:(651) 296-0804

June 7, 2006

To: Addressees  
  
From: Nancy Sannes  
Estimates Engineer  
  
Subject: Cost Index – 2006 First Quarter

The Minnesota Highway Construction Composite Cost Index for the first quarter of 2006 is 198.82, up 29.25 from the fourth quarter of 2005 or 17%. The first quarter index was based on \$71.5 million of work considered from 25 projects.

### First Quarter 2006 Indicator Costs

Item	Quantity	Cost	Unit Cost
Excavation	1,355,676 CY	\$4,882,679.12	\$3.60/CY
Reinforcing Steel	2,909,320 lb	\$2,666,448.51	\$0.92/lb
Structural Steel	903,620 lb	\$1,073,809.76	\$1.19/lb
Structural Concrete	22,756 CY	\$9,328,478.85	\$409.93/CY
Concrete Pavement	90,239 CY	\$8,472,128.87	\$93.89/CY
Plant-Mixed Bituminous	1,205,011 ton	\$45,050,216.25	\$37.39/ton
<b>Total</b>		<b>\$71,473,761.36</b>	

First quarter, 2006 project information is compared to first quarter 2005 below.

### Minnesota Highway Construction Project Summary

	2005 Q1	2006 Q1
Number of Projects Awarded	63 <sup>1</sup>	55
Awarded Amount (\$ million)	\$346.0 <sup>1</sup>	\$145.5
Total Number of Bidders	286 <sup>1</sup>	226
Average Number of Bidders	4.5 <sup>1</sup>	4.1
Number of Cost Index Projects	34	25
Cost Index Amount (\$ million)	\$46.9	\$71.5
Excavation Index	91.95	179.64
Structures Index	201.24	194.19
Surfacing Index	172.12	206.48
Composite Cost Index (CI)	169.57	198.82

<sup>1</sup> Includes S.P. 1017-12 Design Build, award amount \$238.1 million.

The average number of bidders per project was 4.1 for the first quarter of 2006. In comparison, the average number of first quarter bidders in 2005 and 2004 were 4.5 and 4.9 respectively.

Attached is an explanation of the derivation of the Minnesota Cost index, charts of quarterly and annual Minnesota highway construction cost trends and a table and chart comparing the yearly Minnesota Composite Cost Index with the latest yearly FHWA Index.



Analysis:

Fuel prices have risen further in the last few months and continue to impact construction costs. The Energy Information Administration cites increased crude oil prices, production decreases due to refinery unit shut downs for the deferred fall maintenance, relatively strong demand despite high prices and the transition from using MTBE to ethanol in Reformulated Gasoline.

Unit prices for the first quarter of 2006 are comparable to prices from the fourth quarter of 2005, with the exception of excavation which rose 36%. Fuel costs have contributed to the higher excavation costs, but most of the cost is attributable to smaller quantities of work from the projects considered.

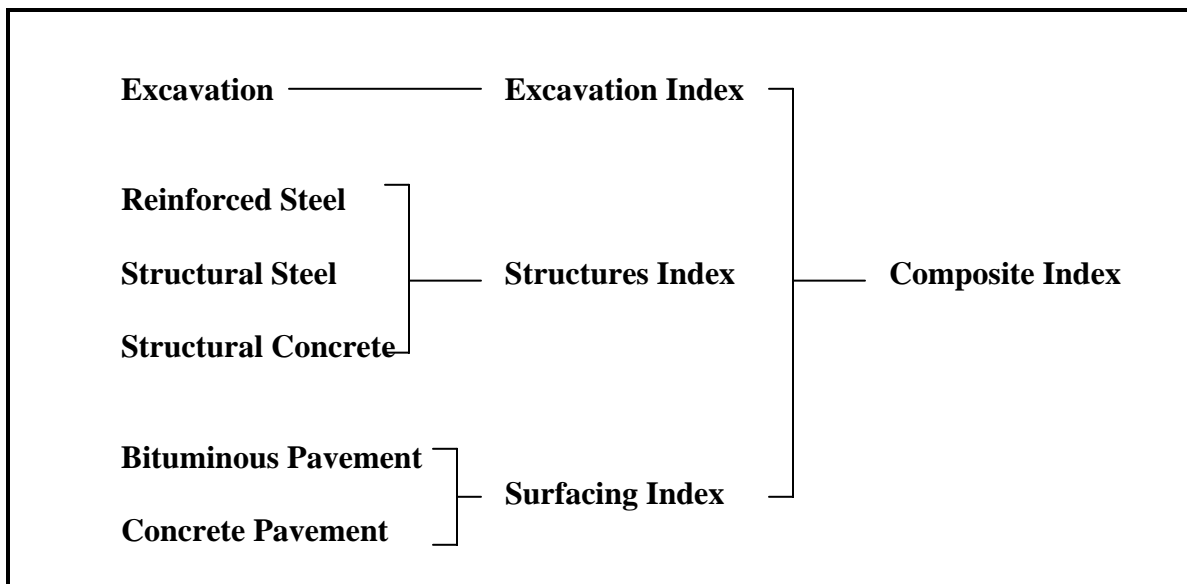
Looking forward, bituminous prices are expected to rise substantially throughout the summer, possibly \$1-\$2 per ton per month, while price increases for excavation, concrete and steel should be moderate and in line with the inflation projection of 5% for the year.

cc: File

# Minnesota Construction Cost Index

The Minnesota Construction Cost Index is an indicator of price trends for highway construction.

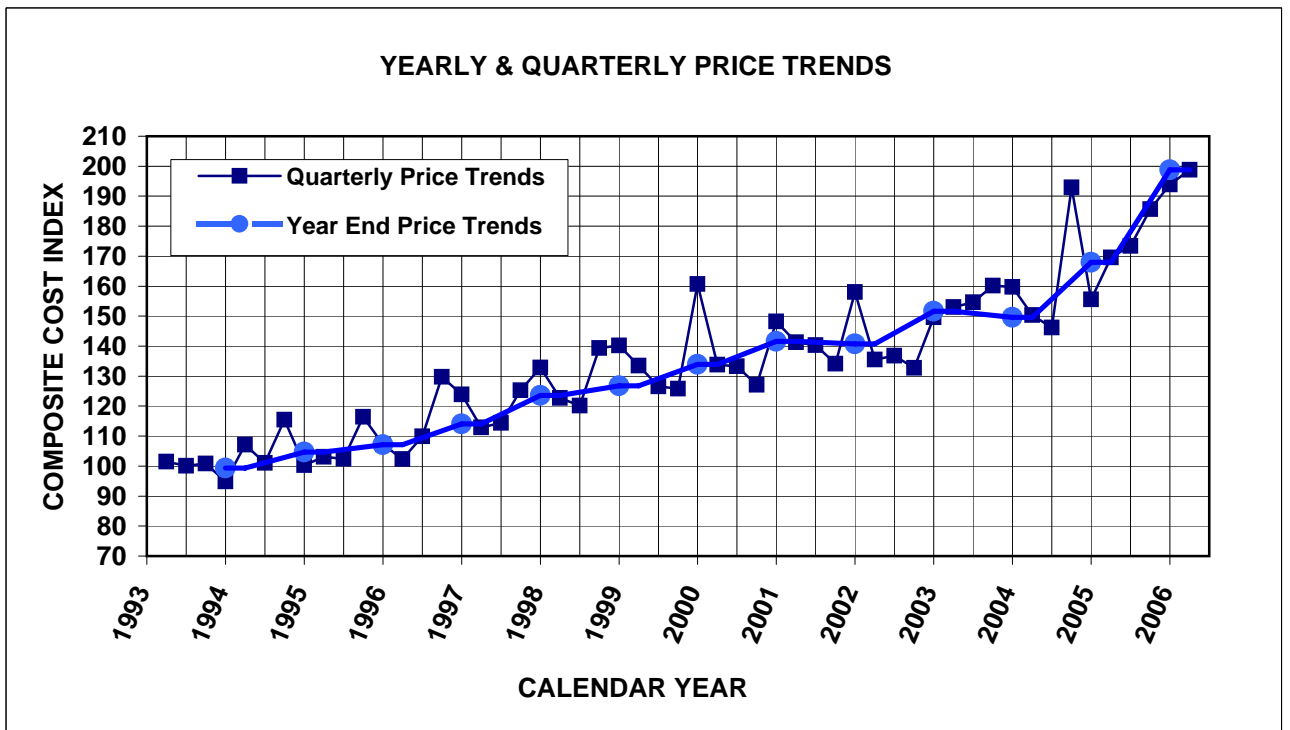
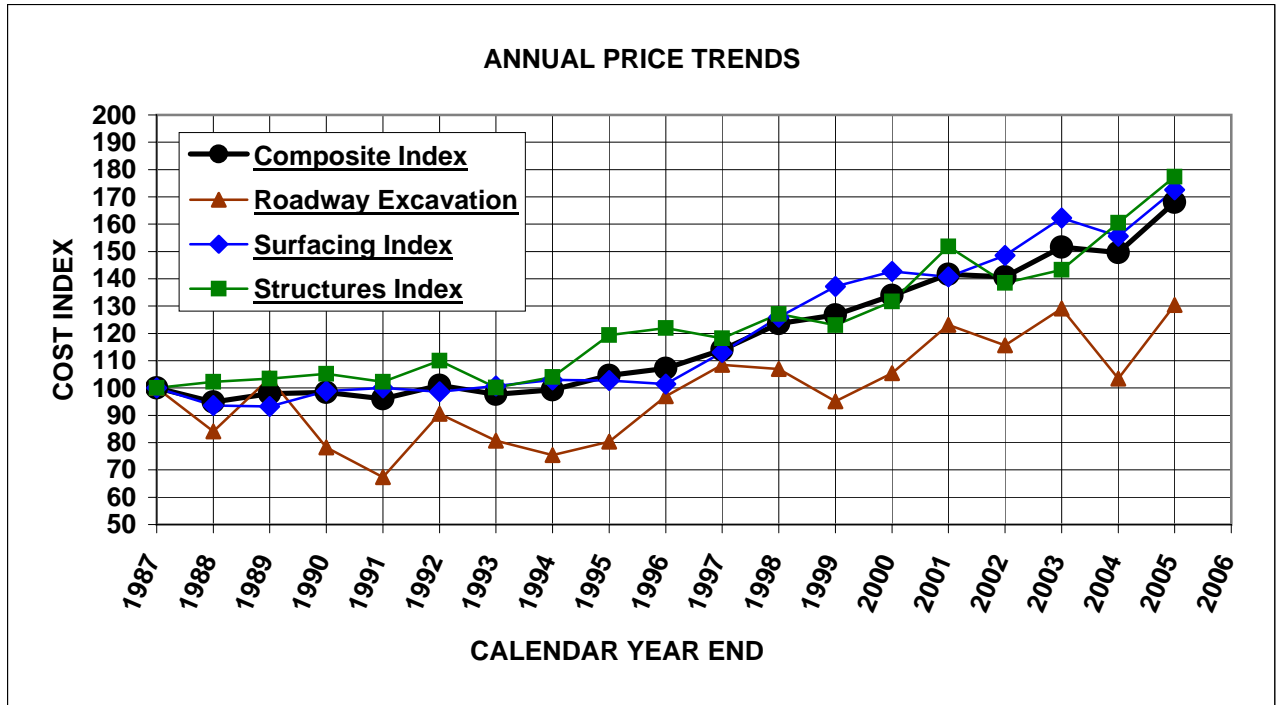
It is composed of six indicator items: roadway excavation, to indicate the price trends for all roadway excavation; concrete pavement and plant-mixed bituminous, to indicate the price trend for all surfacing types; and reinforcing steel, structural steel, and structural concrete, to indicate the price trend for structures.



Each quarter, an average unit price is computed for each indicator item. The unit price is based upon the actual bids from projects **excluding Design Build projects**, costing more than \$100,000, and let during that quarter. These unit prices include the cost of material, labor, equipment, overhead and profit.

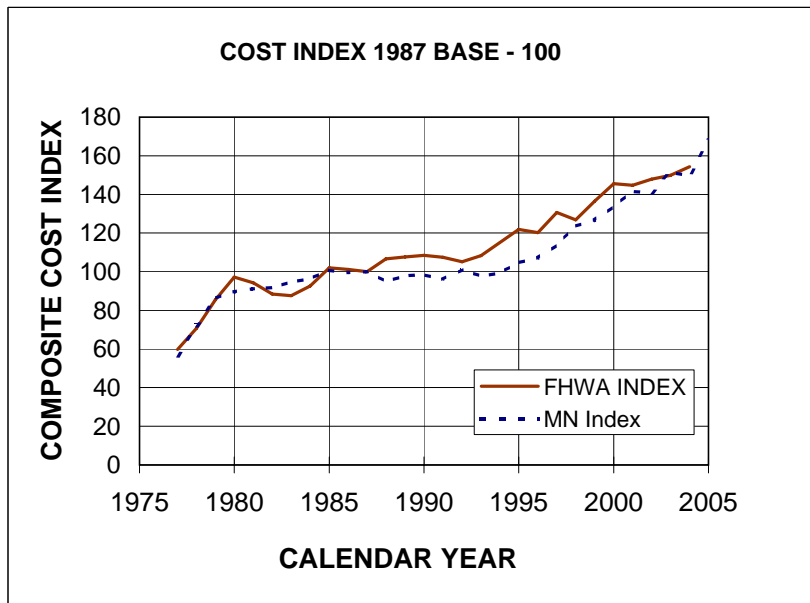
These unit prices along with the 1987 base unit prices are used to compute the Construction Cost Index. Additionally, the 1987 quantities are used to combine these indices as shown above into an excavation index, a surfacing index, a structures index and a composite index.

## Minnesota Highway Construction Cost Trends



**HIGHWAY CONSTRUCTION COST INDEX 1987 BASE-100**

<u>Year</u>	<u>FHWA Index</u>	<u>MN Index</u>
1975		
1976		
1977	59.80	56.40
1978	70.70	72.10
1979	85.50	86.30
1980	97.20	89.60
1981	94.20	91.20
1982	88.50	91.80
1983	87.60	94.80
1984	92.60	96.40
1985	102.00	100.70
1986	101.10	99.60
1987	100.00	100.00
1988	106.60	94.90
1989	107.70	97.90
1990	108.50	98.40
1991	107.50	96.00
1992	105.10	101.00
1993	108.30	97.70
1994	115.10	99.30
1995	121.90	104.60
1996	120.20	107.10
1997	130.60	114.00
1998	126.90	123.58
1999	136.50	126.75
2000	145.60	133.91
2001	144.80	141.61
2002	147.90	140.73
2003	149.80	151.60
2004	154.40	149.61
2005		167.97



1987 Base Year = 100  
 FHWA Index includes projects > \$500,000  
 Mn/DOT Index includes projects > \$100,000



### MN/DOT COST INDEX

<u>Year</u>	<u>Roadway Excavation</u>	<u>Bituminous Surfacing</u>	<u>Concrete Surfacing</u>	<u>Surfacing Index</u>	<u>Reinforce. Steel</u>	<u>Structural Steel</u>	<u>Structural Concrete</u>	<u>Structures Index</u>	<u>Composite Index</u>
<b>1987</b>	100.00	100.00	100.00	100.00	100.00	100.00	100.00	100.00	100.00
<b>1988</b>									
1st Quarter	66.35	92.87	76.99	89.60	108.25	113.11	91.18	98.44	88.98
2nd Quarter	111.84	96.02	107.04	98.29	107.22	103.87	95.60	99.37	100.58
3rd Quarter	87.81	94.14	104.76	96.33	110.27	110.57	110.45	110.43	99.46
4th Quarter	89.72	103.63		103.63	115.44	107.04	94.37	100.80	100.39
Year End	84.08	95.68	85.55	93.59	109.73	109.34	97.90	102.26	94.90
<b>1989</b>									
1st Quarter	121.34	88.57	92.72	89.42	120.87	141.72	101.41	112.36	101.11
137.56	70.45	90.06	87.63	89.56	108.73	102.24	98.24	101.04	90.35
3rd Quarter	137.56	107.54	135.39	113.28	116.66	107.48	94.73	101.34	113.09
4th Quarter		91.13		91.13	138.53	121.78	146.33	140.47	111.64
Year End	103.72	92.01	94.50	93.23	115.99	111.15	97.29	103.45	97.90
<b>1990</b>									
1st Quarter	75.54	100.19	81.67	96.37	115.62	140.73	102.05	111.55	98.06
2nd Quarter	67.71	96.79	104.57	98.39	122.11	105.43	110.57	111.97	98.17
3rd Quarter	97.07	122.17	102.13	118.04	117.17	112.70	92.03	100.67	109.65
4th Quarter	66.99	106.72	148.85	115.41	118.55	108.99	133.76	126.38	111.83
Year End	78.30	100.58	97.24	98.89	117.48	112.81	99.09	105.17	98.41
<b>1991</b>									
1st Quarter	86.48	103.02	111.23	104.71	115.23	123.22	91.37	101.72	101.16
2nd Quarter	67.72	96.75	105.58	98.57	110.99	128.81	103.22	109.27	97.43
3rd Quarter	105.04				122.95		110.48	113.49	110.44
4th Quarter	47.98	81.65	111.81	87.87	106.38	84.44	80.29	86.22	81.62
Year End	67.31	97.72	109.11	100.07	111.54	121.31	93.98	102.28	96.04
<b>1992</b>									
1st Quarter	134.20	110.24	90.36	106.14	106.10	96.66	92.71	96.07	107.07
2nd Quarter	84.69	95.94	103.65	97.53	119.25	109.95	112.93	113.67	100.67
3rd Quarter	90.06	102.36	92.40	100.31	99.53	108.35	131.75	121.22	105.29
4th Quarter	99.54	105.41		105.41	105.69	91.58	116.35	109.83	106.01
Year End	90.60	99.05	97.07	98.64	106.37	105.54	112.38	109.98	100.98
<b>1993</b>									
1st Quarter	81.02	104.73	87.06	101.08	118.06	139.75	102.08	111.88	101.53
2nd Quarter	81.51	101.97	101.79	101.93	109.83	128.78	97.52	105.46	100.08
3rd Quarter		117.01		117.01	97.06		65.66	73.25	100.83
4th Quarter	73.97	94.47	84.12	92.33	119.80	112.58	104.90	109.22	94.91
Year End	80.75	101.91	96.30	100.75	108.13	127.30	90.07	100.21	97.70
<b>1994</b>									
1st Quarter	115.56	97.54	95.57	97.13	115.00	95.98	123.67	120.83	107.11
2nd Quarter	75.92	102.90	104.22	103.17	114.87		109.55	110.84	101.09
3rd Quarter	152.37	109.02	136.56	114.70	99.78	111.66	96.09	99.56	115.44
4th Quarter	65.52	110.42	103.89	109.08	109.23	98.51	98.97	100.93	100.29
Year End	75.38	102.48	104.96	102.99	105.52	110.88	101.55	103.98	99.32
<b>1995</b>									
1st Quarter	85.69	95.53	115.74	99.70	120.72	122.37	114.68	117.23	103.10
2nd Quarter	71.02	99.49		99.49	121.32	132.48	117.95	121.17	102.42
3rd Quarter	77.42	113.46	111.29	113.02	151.42		144.16	145.92	116.46
4th Quarter	92.70	107.55	109.43	107.93	121.52		111.82	114.16	107.29
Year End		99.81	113.94	102.73	121.47	126.83	116.53	119.32	104.63
<b>1996</b>									
1st Quarter	83.05	92.20	123.35	98.62	118.80	178.06	100.96	118.05	102.38
2nd Quarter	119.58	95.01	113.11	98.74	130.48		127.59	128.29	109.88
3rd Quarter	124.27	131.87	150.79	135.77	120.96		119.41	119.79	129.72
4th Quarter	95.12	124.66	113.40	122.34	141.02		144.36	143.55	123.91
Year End	97.01	97.12	117.89	101.40	120.85	178.06	106.59	121.98	107.13
<b>1997</b>									
1st Quarter	117.41	107.57	112.89	108.66	117.44	93.82	125.60	118.39	112.93
2nd Quarter	96.00	107.53	153.26	116.96	129.60	107.48	117.89	118.40	114.38
3rd Quarter	122.35	130.99		130.99	124.92	119.62	116.28	118.59	125.27
4th Quarter	127.75	134.59	0.00	134.59					132.88
Year End	108.51	109.84	125.63	113.10	122.08	99.44	122.32	118.25	114.03
<b>1998</b>									
1st Quarter	100.29	124.56	135.20	126.75	130.86		125.58	126.86	122.75
2nd Quarter	104.63	122.21	133.04	124.44	123.71		118.20	119.53	120.10
3rd Quarter	135.95	150.01	129.84	145.85	133.21		126.04	127.51	139.40
4th Quarter		155.16		155.16	122.66	146.08	110.58	119.22	140.22
Year End	106.99	124.06	132.22	125.95	127.70	146.08	121.58	127.10	123.58

**MN/DOT COST INDEX**  
(CONTINUED)

<u>Year</u>	<u>Roadway</u> <u>Excavation</u>	<u>Bituminous</u> <u>Surfacing</u>	<u>Concrete</u> <u>Surfacing</u>	<u>Surfacing</u> <u>Index</u>	<u>Reinforce.</u> <u>Steel</u>	<u>Structural</u> <u>Steel</u>	<u>Structural</u> <u>Concrete</u>	<u>Structures</u> <u>Index</u>	<u>Composite</u> <u>Index</u>
<b>1999</b>									
1st Quarter	90.59	130.95	210.30	147.31	133.64		126.39	128.14	133.51
2nd Quarter	92.34	137.50	139.09	137.83	121.34		121.92	121.78	126.58
3rd Quarter	85.22	135.66		135.66	125.58	168.87	121.78	130.81	125.78
4th Quarter	182.25	143.08	202.56	155.34	132.10	107.12	183.75	160.00	160.66
Year End	95.07	135.87	142.46	137.23	124.73	114.64	124.72	122.95	126.75
<b>2000</b>									
1st Quarter	96.35	141.29	153.08	143.73	142.36	151.96	125.61	133.57	133.77
2nd Quarter	111.93	138.88	158.17	142.86	137.49	136.03	120.21	126.43	133.33
3rd Quarter	102.18	128.03		128.03	137.29		140.48	139.71	127.13
4th Quarter	115.61	136.47	170.73	143.53	149.27		185.41	176.66	148.21
Year End	105.38	138.87	157.19	142.65	139.49	137.59	127.59	131.71	133.91
<b>2001</b>									
1st Quarter	91.27	131.58	133.42	131.96	166.65		196.86	189.55	141.28
2nd Quarter	116.05	135.28	149.20	138.15	135.53	219.62	144.03	155.60	140.36
3rd Quarter	109.17	130.04	154.51	135.09	140.67	166.76	138.68	144.01	134.11
4th Quarter	157.83	160.90	185.56	165.98	149.31	86.82	158.62	144.16	158.06
Year End	123.17	137.25	153.92	140.69	142.53	171.70	149.25	151.85	141.61
<b>2002</b>									
1st Quarter	123.44	147.14	119.78	141.50	151.68	143.03	120.19	130.48	135.49
2nd Quarter	148.48	149.69	140.07	147.71	150.31	165.23	85.03	112.13	136.82
3rd Quarter		132.77		132.77					132.77
4th Quarter	95.26	157.12	161.93	158.12	167.64	154.74	158.85	159.88	149.61
Year End	115.64	150.27	142.16	148.60	159.74	157.32	126.43	138.49	140.73
<b>2003</b>									
1st Quarter	119.16	168.38	149.65	164.51	165.32	124.83	149.85	148.55	153.05
2nd Quarter	149.11	166.29	171.88	167.44	168.38	109.25	130.53	134.34	154.57
3rd Quarter	126.34	162.12	190.96	168.07	166.04		161.37	162.50	160.21
4th Quarter	142.18	144.11		144.11	162.08	139.53	213.05	189.98	159.77
Year End	129.12	163.83	156.17	162.25	166.37	116.91	143.23	143.23	151.60
<b>2004</b>									
1st Quarter	89.34	157.99	145.67	155.45	184.40	166.06	166.16	169.78	150.36
2nd Quarter	101.93	156.99	153.21	156.21	193.40		135.92	149.83	146.23
3rd Quarter	156.87	173.66	220.06	183.23	231.70	126.15	253.80	226.99	192.95
4th Quarter	171.37	153.88	126.70	148.28	175.45	195.43	146.69	160.98	155.53
Year End	103.48	159.35	141.15	155.60	191.19	162.96	150.02	160.50	149.61
<b>2005</b>									
1st Quarter	91.95	159.35	221.30	172.12	206.72	281.37	176.99	201.24	169.57
2nd Quarter	152.75	163.52	230.40	177.31	206.89	201.87	159.27	176.24	173.44
3rd Quarter	135.85	214.40	173.97	206.06	195.34	199.90	158.17	172.91	185.71
4th Quarter	131.93	211.41		211.41	219.49		192.75	199.22	193.94
Year End	130.43	169.66	183.55	172.53	202.26	201.13	162.78	177.39	167.97
<b>2006</b>									
1st Quarter	179.64	216.37	168.40	206.48	209.17	167.23	196.99	194.19	198.82