

Safety Zone boundaries:

Safety Zone A. All land in that portion of the approach zones of runway 11/29 and runway 17/35 as defined in Section Five, Subdivision 1 hereof, which extends outward from the end of the primary surface a distance equal to two-thirds of the planned length of the runway. These distances shall be:

1. 4,667 feet for runway 11/29.
2. 2,801 feet for runway 17/35.

Safety Zone B. All that land in that portion of the approach zones of runway 11/29 and runway 17/35 as defined in Section Five, Subdivision 1, which extends outward from Safety Zone A, a distance equal to one-third of the planned length of the runway. This distance shall be:

- (a) 2,333 feet for runway 11/29.
- (b) 1,400 feet for runway 17/35.

Safety Zone C. All that land which is enclosed within the perimeter of the horizontal zone as defined in Section Five, Subdivision 1 hereof, and which is not included in Zone A or Zone B.

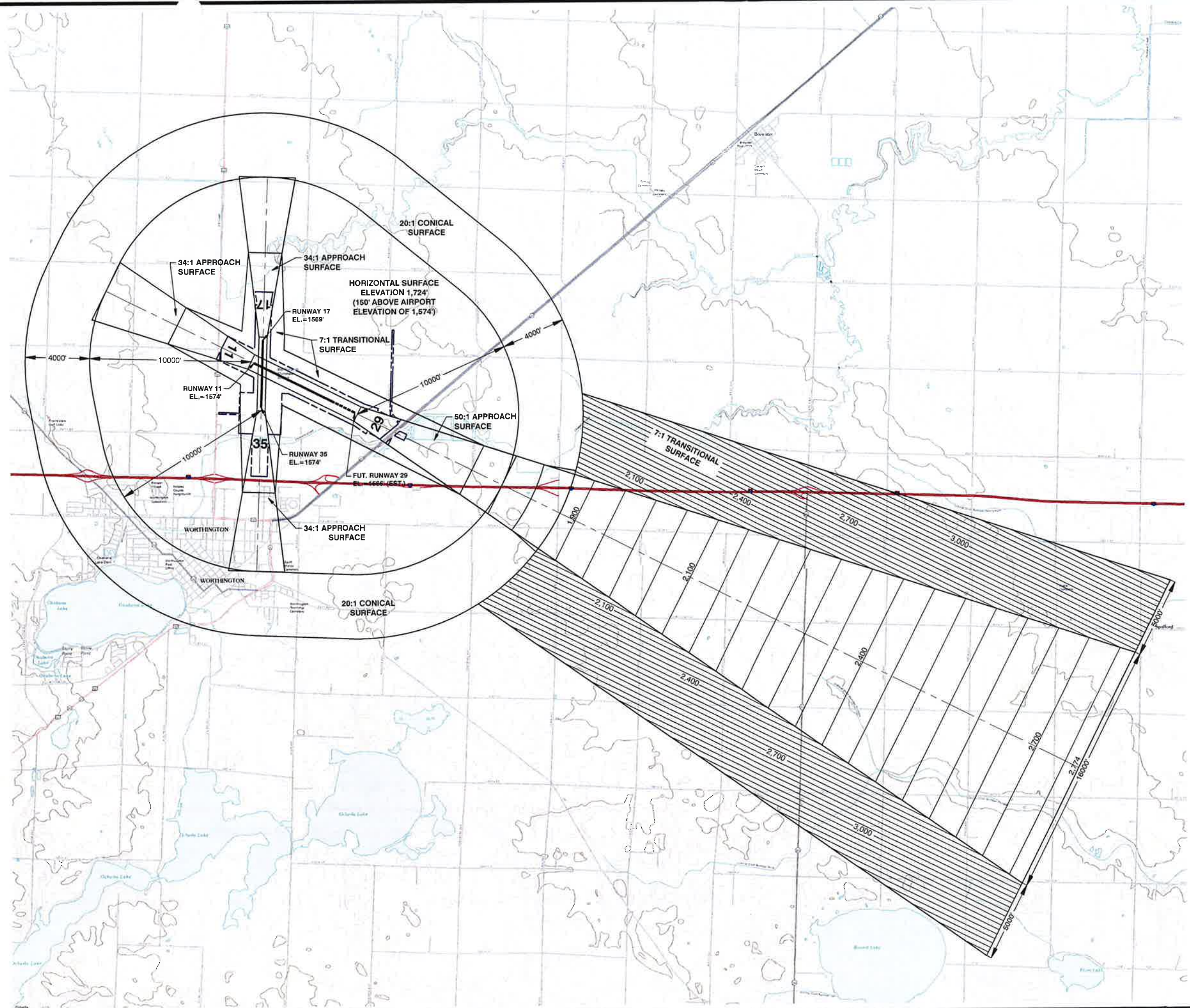
**WORTHINGTON MUNICIPAL AIRPORT
LAND USE ZONING**

1700 AIRPORT ROAD NORTH
WORTHINGTON, MN 56187

REVISION

MAH NO:	23424-00-11002
DATE:	JULY, 2012
DESIGNED BY:	BM
DRAWN BY:	TE
CHECKED BY:	BP

SHEET CONTENTS

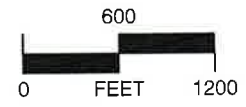
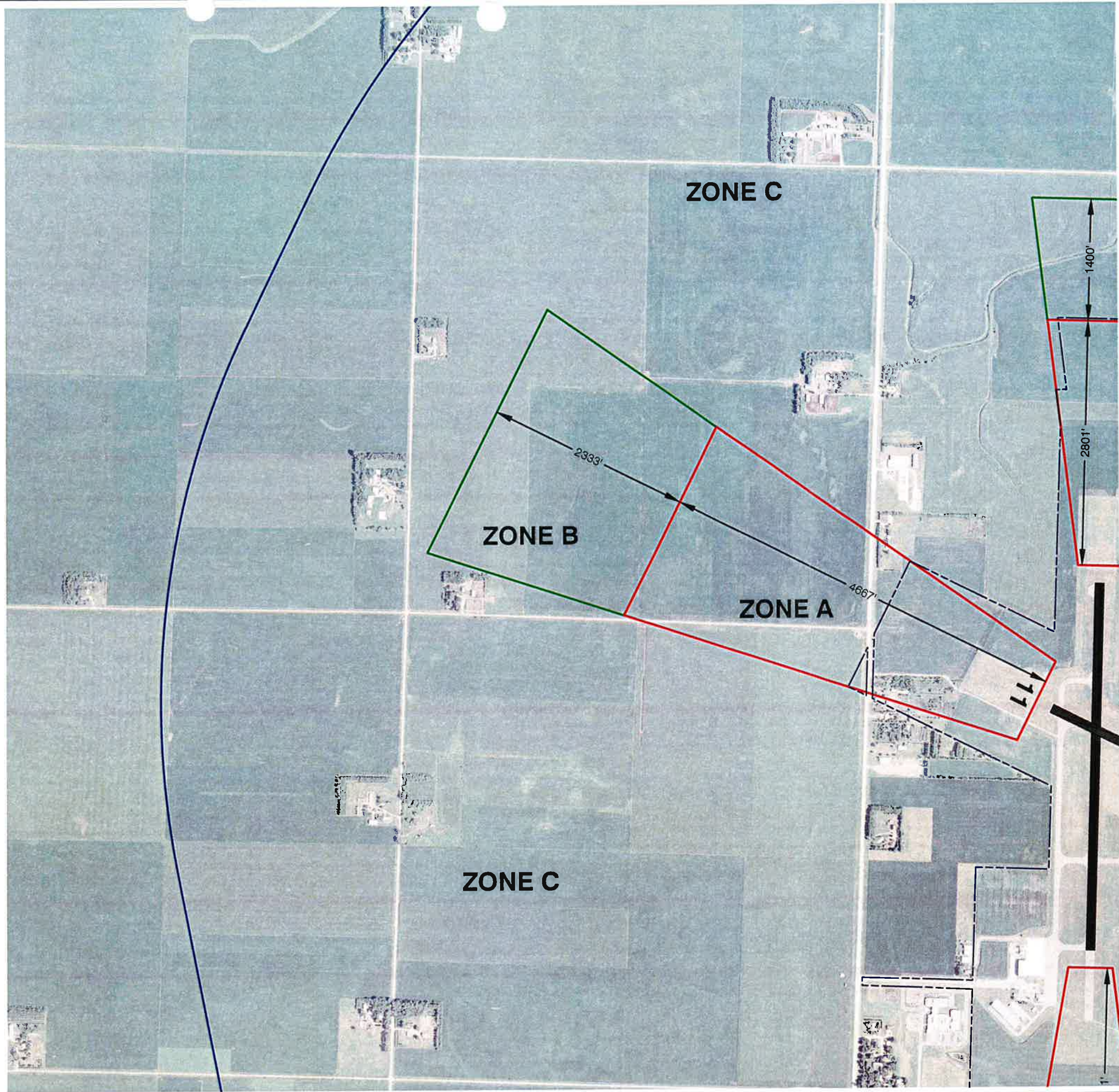


**WORTHINGTON MUNICIPAL AIRPORT
AIRSPACE ZONING**
1700 AIRPORT ROAD NORTH
WORTHINGTON, MN 56187

REVISION

M&H NO: 23424-00-11002
DATE: JULY, 2012
DESIGNED BY: BM
DRAWN BY: TE
CHECKED BY: BP

SHEET CONTENTS



Mead & Hunt

Mead & Hunt, Inc.
7900 West 78th Street
Suite 370
Minneapolis, MN 55439
Phone: 952-941-5619
www.meadhunt.com

Worthington

Safety Zone A. All land in that portion of the approach zones of runway 11/29 as defined in Section Five, Subdivision 1 hereof, which extends outward from the end of the primary surface a distance equal to two-thirds of the planned length of the runway. These distances shall be: 4,667 feet for runway 11/29.

Safety Zone B. All that land in that portion of the approach zones of runway 11/29 as defined in Section Five, Subdivision 1, which extends outward from Safety Zone A, a distance equal to one-third of the planned length of the runway. This distance shall be: 2,333 feet for runway 11/29.

Safety Zone C. All that land which is enclosed within the perimeter of the horizontal zone as defined in Section Five, Subdivision 1 hereof, and which is not included in Zone A or Zone B.

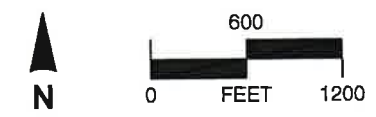
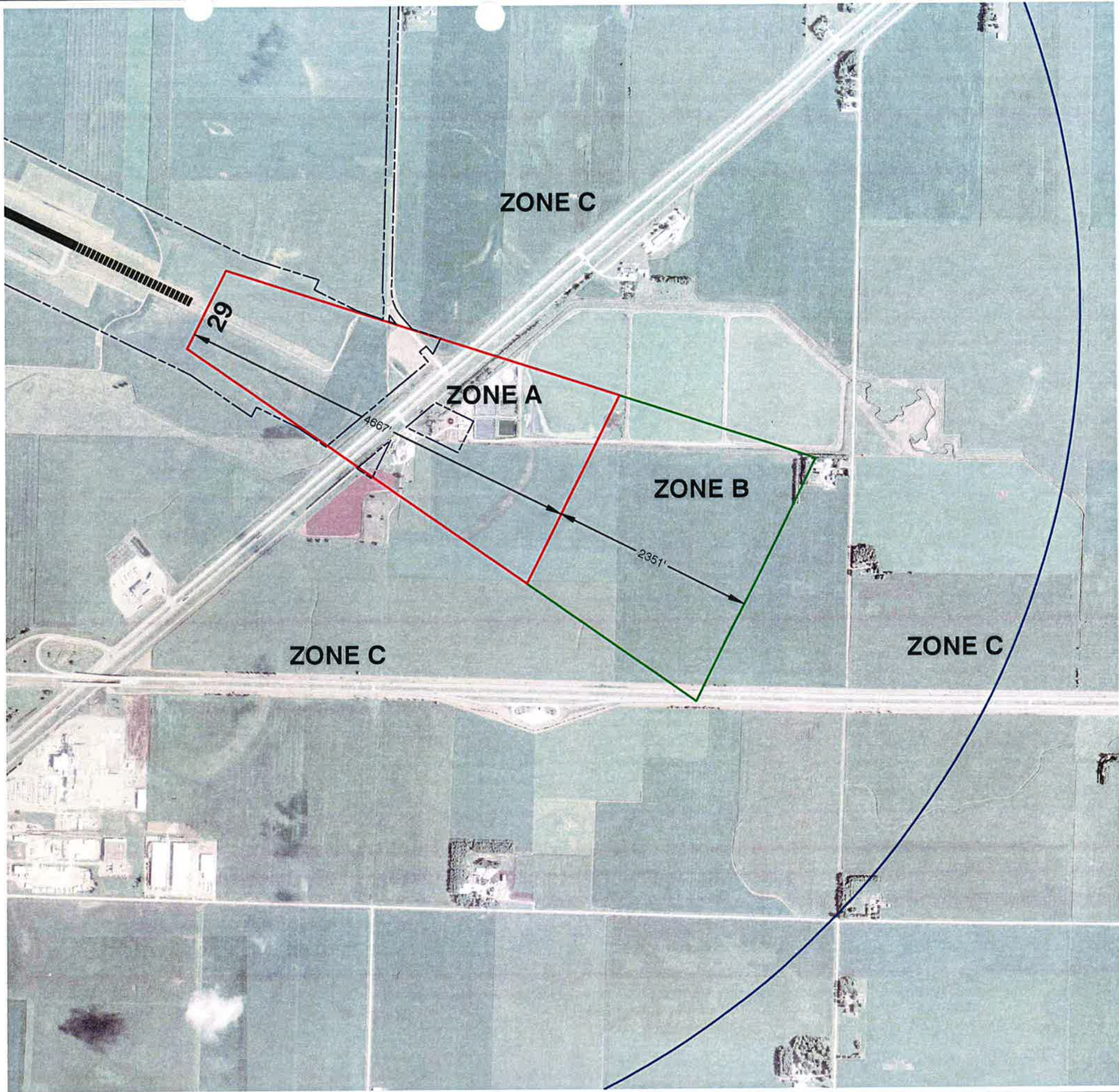
**WORTHINGTON MUNICIPAL AIRPORT
RUNWAY 11 LAND USE ZONING DETAIL**

1700 AIRPORT ROAD NORTH
WORTHINGTON, MN 56187

REVISION

MSH NO: 23424-00-11002
DATE: JULY, 2012
DESIGNED BY: BM
DRAWN BY: TE
CHECKED BY: BP

SHEET CONTENTS



Safety Zone A. All land in that portion of the approach zones of runway 11/29 as defined in Section Five, Subdivision 1 hereof, which extends outward from the end of the primary surface a distance equal to two-thirds of the planned length of the runway. These distances shall be: 4,667 feet for runway 11/29.

Safety Zone B. All that land in that portion of the approach zones of runway 11/29 as defined in Section Five, Subdivision 1, which extends outward from Safety Zone A, a distance equal to one-third of the planned length of the runway. This distance shall be: 2,333 feet for runway 11/29.

Safety Zone C. All that land which is enclosed within the perimeter of the horizontal zone as defined in Section Five, Subdivision 1 hereof, and which is not included in Zone A or Zone B.

Mead & Hunt
 Mead & Hunt, Inc.
 7900 West 78th Street
 Suite 370
 Minneapolis, MN 55439
 Phone: 952-941-5619
 www.meadhunt.com

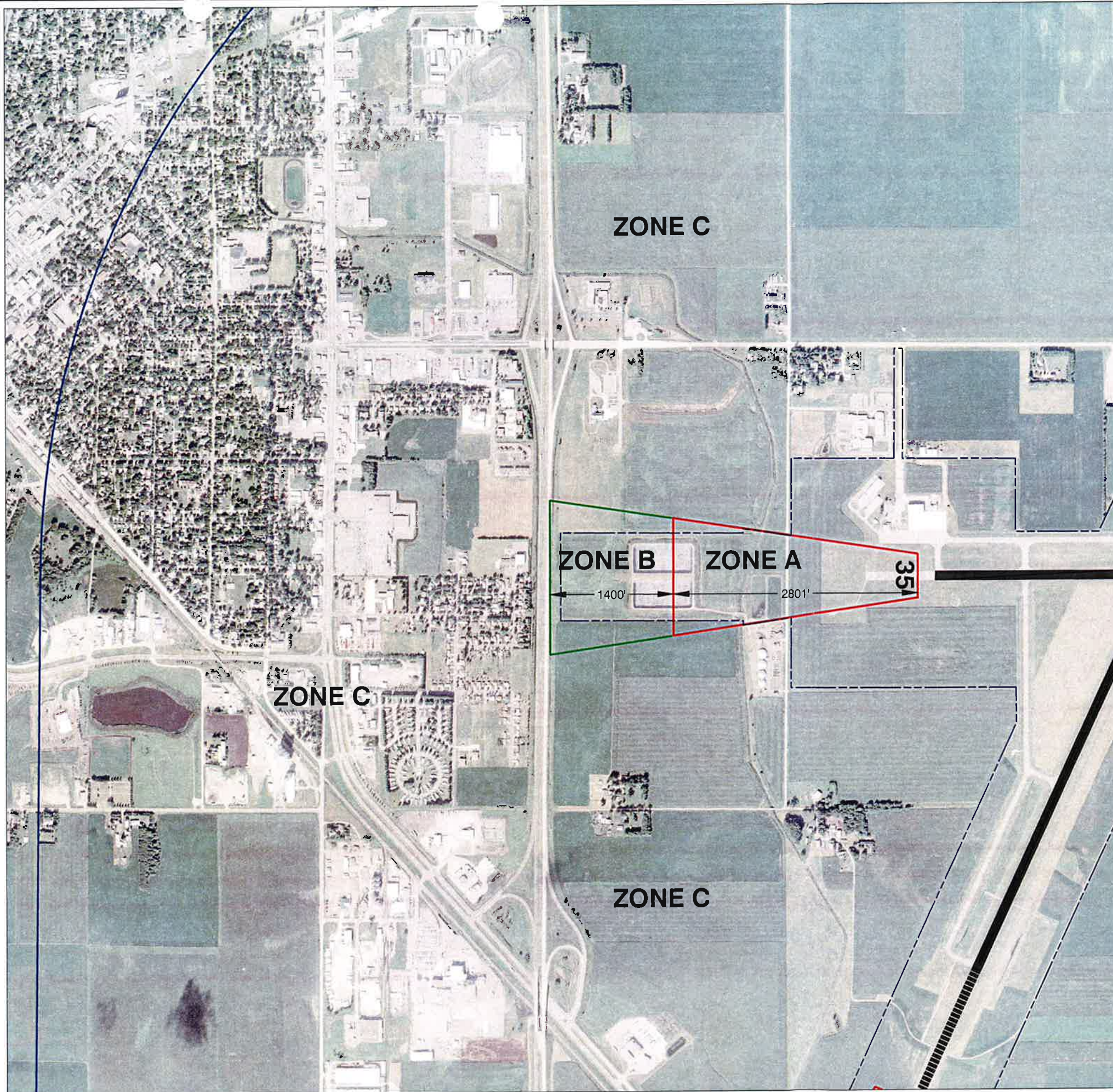


**WORTHINGTON MUNICIPAL AIRPORT
 RUNWAY 29 LAND USE ZONING DETAIL**
 1700 AIRPORT ROAD NORTH
 WORTHINGTON, MN 56187

REVISION	

MAP NO. 23424-00-11002
 DATE JULY, 2012
 DESIGNED BY BM
 DRAWN BY TE
 CHECKED BY BP

SHEET CONTENTS



Mead & Hunt

Mead & Hunt, Inc.
7900 West 78th Street
Suite 370
Minneapolis, MN 55439
Phone: 952-941-5619
www.meadhunt.com

Worthington

Safety Zone A. All land in that portion of the approach zones of runway 17/35 as defined in Section Five, Subdivision 1 hereof, which extends outward from the end of the primary surface a distance equal to two-thirds of the planned length of the runway. These distances shall be: 2,801 feet for runway 17/35.

Safety Zone B. All that land in that portion of the approach zones of runway 17/35 as defined in Section Five, Subdivision 1, which extends outward from Safety Zone A, a distance equal to one-third of the planned length of the runway. This distance shall be: 1,400 feet for runway 17/35.

Safety Zone C. All that land which is enclosed within the perimeter of the horizontal zone as defined in Section Five, Subdivision 1 hereof, and which is not included in Zone A or Zone B.

WORTHINGTON MUNICIPAL AIRPORT
RUNWAY 35 LAND USE ZONING DETAIL

1700 AIRPORT ROAD NORTH
WORTHINGTON, MN 56187

REVISION

MSH NO: 23424-00-11002
DATE: JULY, 2012
DESIGNED BY: BM
DRAWN BY: TE
CHECKED BY: BP

SHEET CONTENTS

