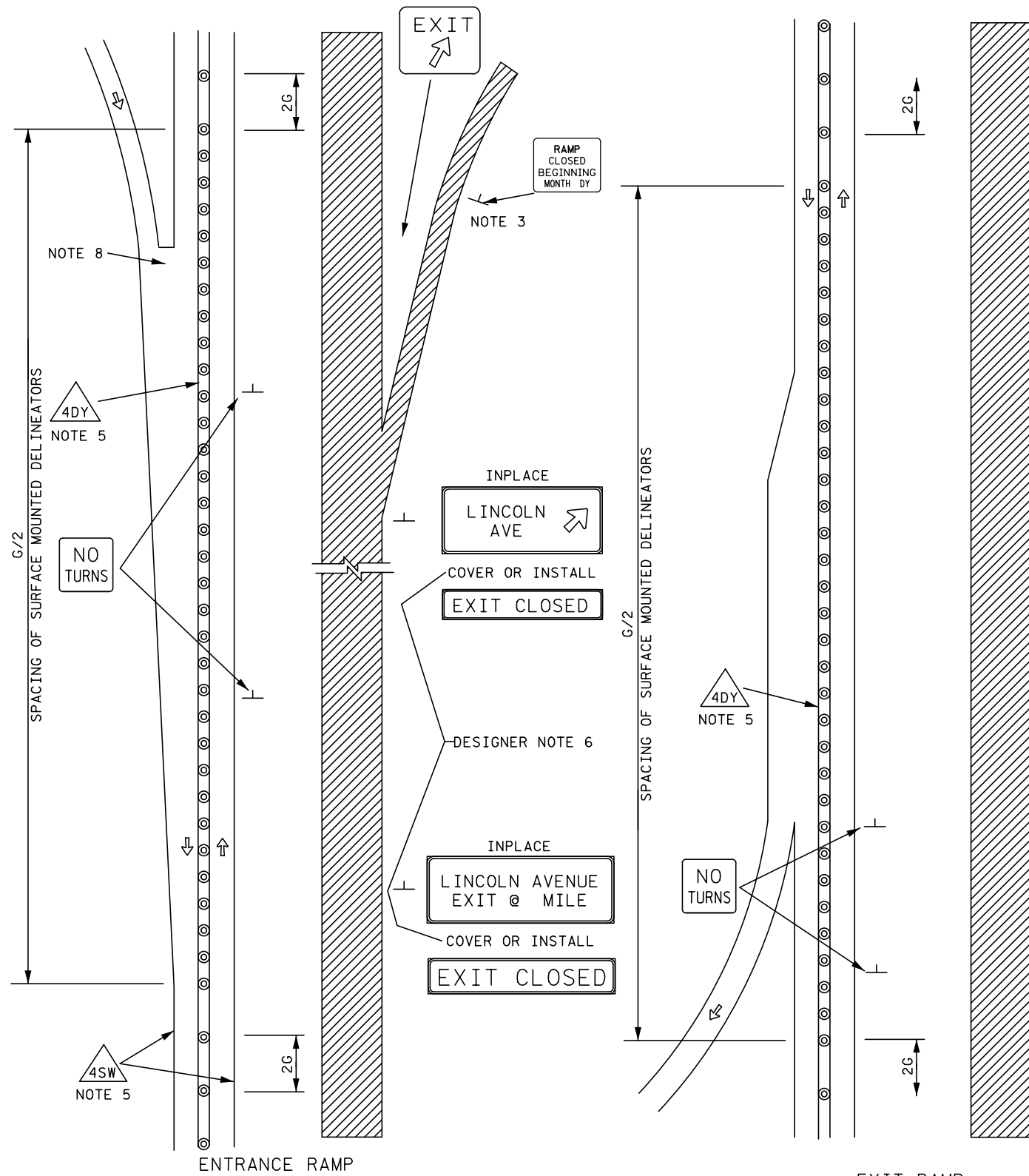


ALL SIGNS COVERED WITH PANELS SHALL BE COVERED AS SHOWN IN THE DRAWING TEMPORARY CONSTRUCTION SIGN PANEL OVERLAY.






TWO LANE, TWO WAY OPERATIONS
AT RAMPS ON OPEN ROADWAY
LONG TERM

POSTED SPEED LIMIT PRIOR TO WORK STARTING (MPH)	SPACING OF CHANNELIZING DEVICES (G)	SPACING OF ADVANCE WARNING SIGNS (A)	DECISION SIGHT DISTANCE (FEET)	TAPER LENGTH (L) (FEET)	BUFFER SPACE (B) (FEET)
0 - 30	25	100	550	200	200
35 - 40		325	700	325	305
45 - 50	50	600	900	600	425
55		750	1200	700	500
60 - 65		1000	1400	800	650
70 - 75		1200	1600	900	820

NOTE:
NOT ALL INFORMATION IN THIS BOX MAY APPLY TO THIS DETAIL.

DESIGNER NOTES (REMOVE FROM LAYOUT BEFORE INSERTING IN PLAN)

1. INSERT SPACING CHART DISTANCES INTO LAYOUTS AND REMOVE CHART WHENEVER PRACTICAL.
2. CONSIDER THE INSTALLATION OF A PCMS AND/OR G20-X2 OR SPECIAL SIGN, IF CONGESTION IS EXPECTED, IF ADVANCE SIGNING TO DIVERT TRAFFIC IS NEEDED OR OTHER CONDITIONS DETERMINED BY THE ENGINEER.
3. INSTALL A PCMS AND/OR G20-X1 SIGN (MODIFIED) OR G20-X2 SIGN FOR SEVEN DAY ADVANCE WARNING OF RESTRICTION.
4. FOR ANY EXCAVATION OR DROP-OFF IN EXCESS OF 12 IN, SEE THE MINNESOTA MANUAL ON UNIFORM TRAFFIC CONTROL DEVICES SECTION 6F.85 TEMPORARY TRAFFIC BARRIERS.
5. SELECT APPROPRIATE MATERIAL FOR TEMPORARY MARKINGS. SEE STRIPING KEY.
6. LIST ALL DIRECTIONAL SIGNING THAT MUST BE COVERED, REMOVED OR MODIFIED BECAUSE OF RESTRICTIONS. PREPARE SPECIAL SIGN DESIGN LAYOUT SHEET.
7. REMOVE CONFLICTING MARKINGS. DETERMINE MATERIAL TYPE AND QUANTITY OF MARKINGS TO BE REMOVED OR COVERED FOR PAY ITEM QUANTITIES.
8. GORE STRIPE MAY NEED TO BE ADJUSTED. SEE TRAFFIC ENGINEERING MANUAL FOR GORE STRIPING OPTIONS.

-  4" SOLID WHITE PAINT
-  4" DOUBLE YELLOW PAINT
-  SURFACE MOUNTED DELINEATOR