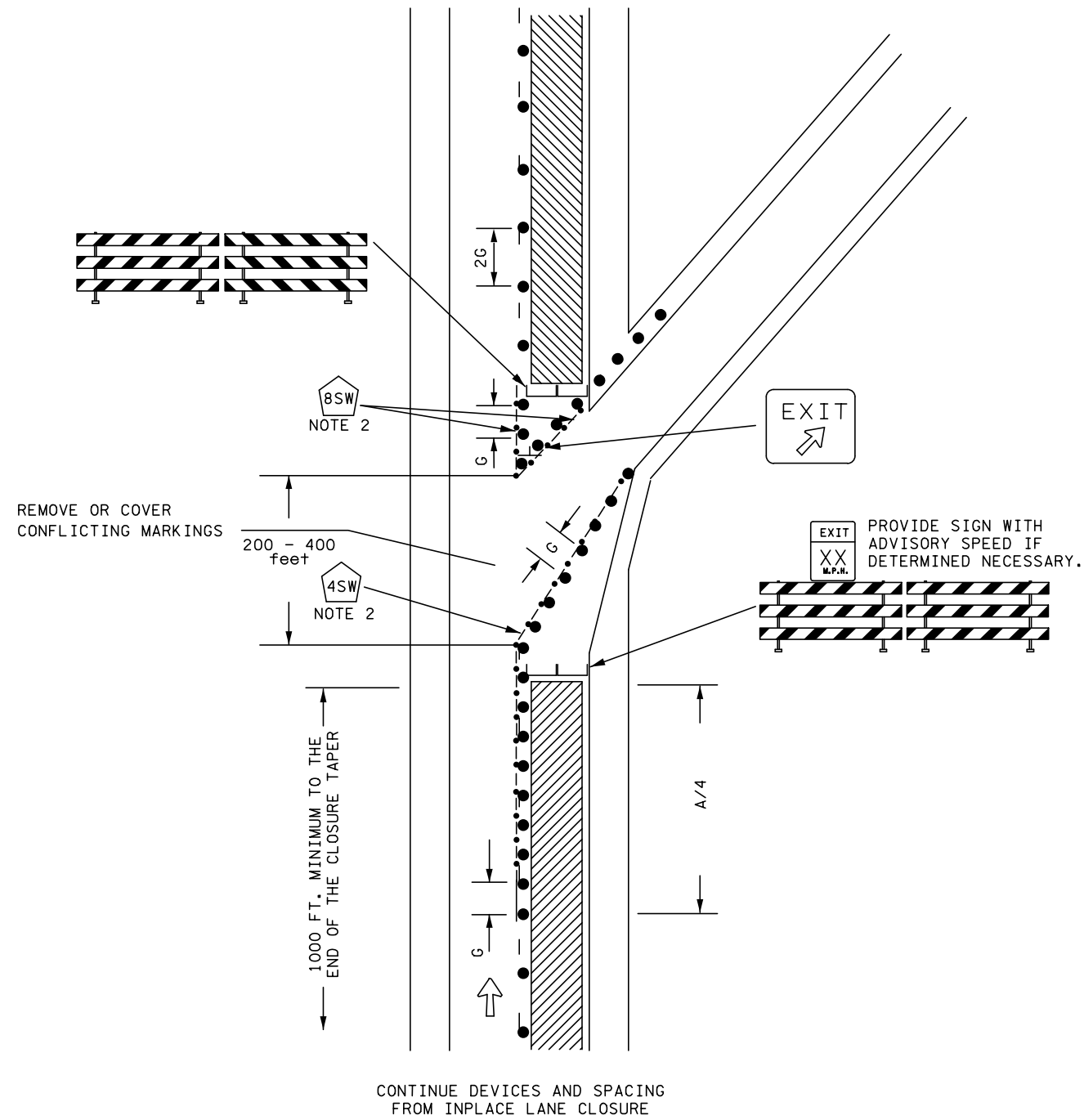


NOTES:

ADJUST THE RAMP EXIT TO FIT THE CONDITIONS AS DIRECTED BY THE ENGINEER.




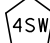

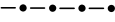
MAINLINE RIGHT LANE CLOSED
EXIT RAMP OPEN
LONG TERM

POSTED SPEED LIMIT PRIOR TO WORK STARTING (MPH)	SPACING OF CHANNELIZING DEVICES (G) FEET	SPACING OF ADVANCE WARNING SIGNS (A) FEET	DECISION SIGHT DISTANCE FEET	TAPER LENGTH (L) FEET	BUFFER SPACE (B) FEET
0 - 30	25	100	550	200	200
35 - 40		325	700	325	305
45 - 50	50	600	900	600	425
55		750	1200	700	500
60 - 65		1000	1400	800	650
70 - 75		1200	1600	900	820

NOTE:
NOT ALL INFORMATION IN THIS BOX MAY APPLY TO THIS DETAIL.

DESIGNER NOTES (REMOVE FROM LAYOUT BEFORE INSERTING IN PLAN):

1. INSERT SPACING CHART DISTANCES INTO LAYOUTS AND REMOVE CHART WHENEVER PRACTICAL.
2. SELECT APPROPRIATE MATERIAL FOR TEMPORARY MARKINGS. SEE STRIPING KEY.
3. REMOVE OR COVER CONFLICTING MARKINGS. DETERMINE QUANTITY OF MARKINGS TO BE REMOVED OR COVERED FOR PAY ITEM QUANTITIES.

-  8" SOLID WHITE REMOVEABLE PREFORMED PLASTIC MARKING
-  4" SOLID WHITE REMOVEABLE PREFORMED PLASTIC MARKING
-  DRUMS, TYPE I OR TYPE II BARRICADE OR VERTICAL PANEL.
-  SOLID LINE PAVEMENT MARKING WITH TEMPORARY RAISED PAVEMENT MARKERS AT 10' SPACING OR WET REFLECTIVE TAPE