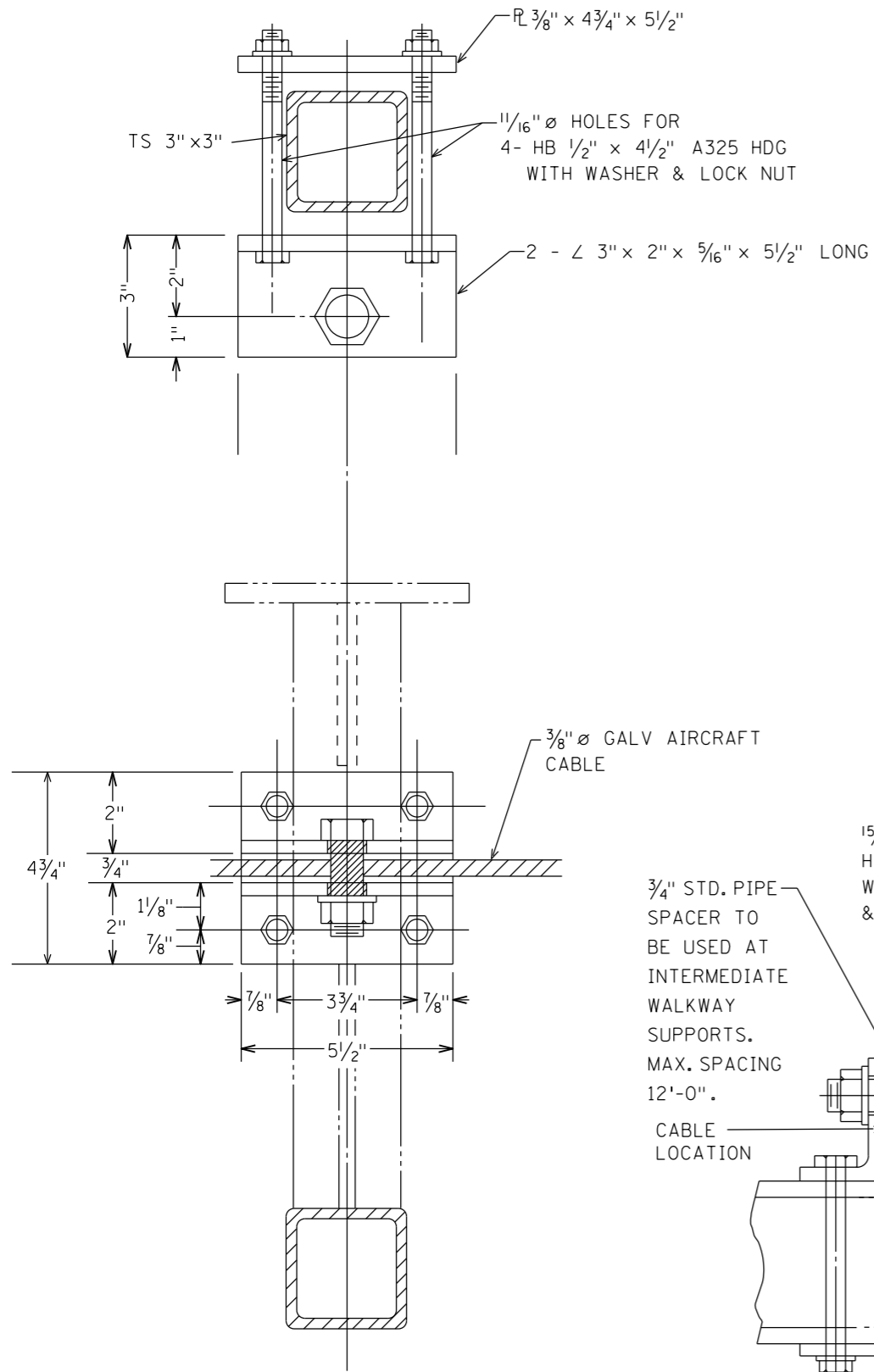
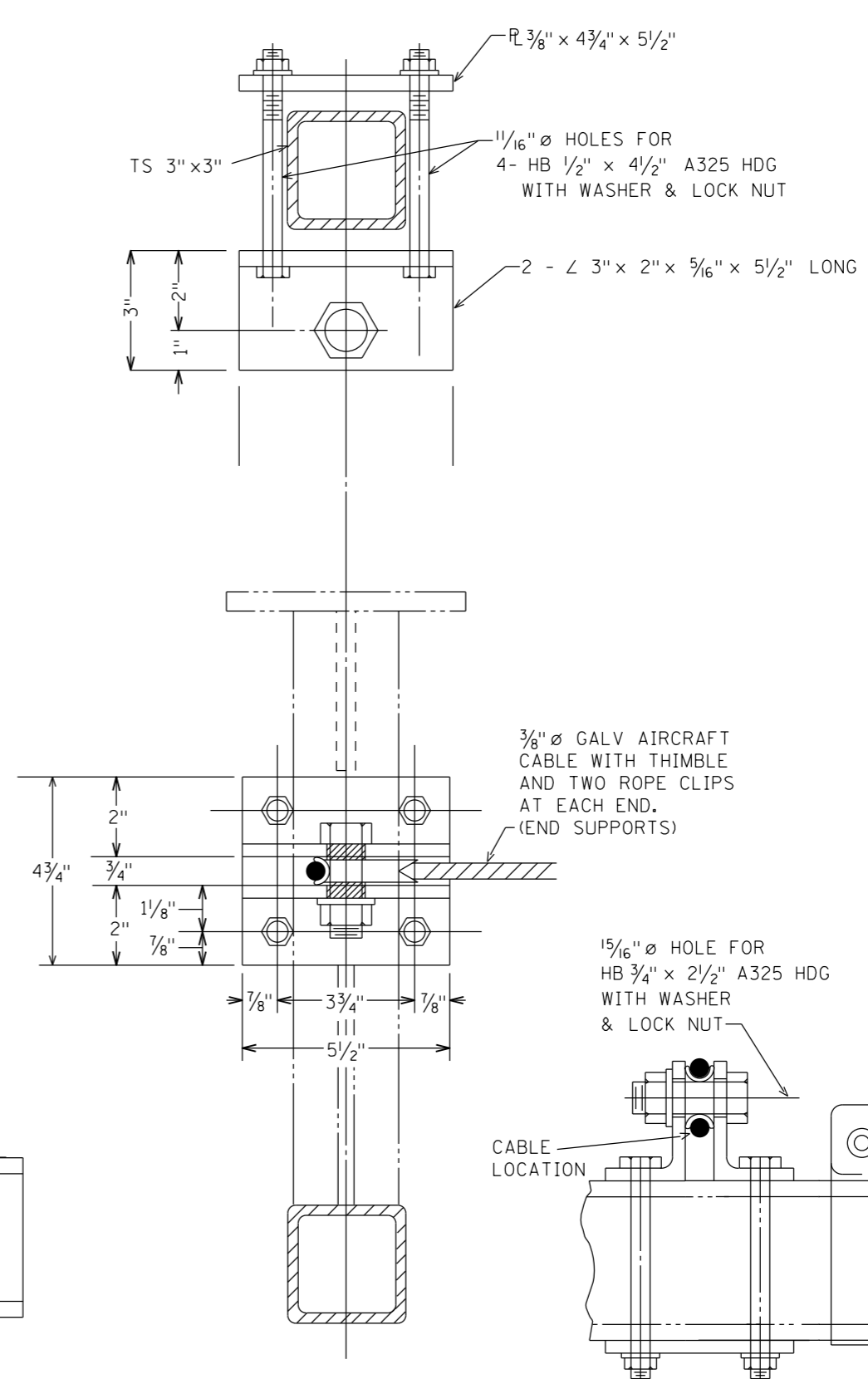


PLOTTED/REVISED: 11/8/2013

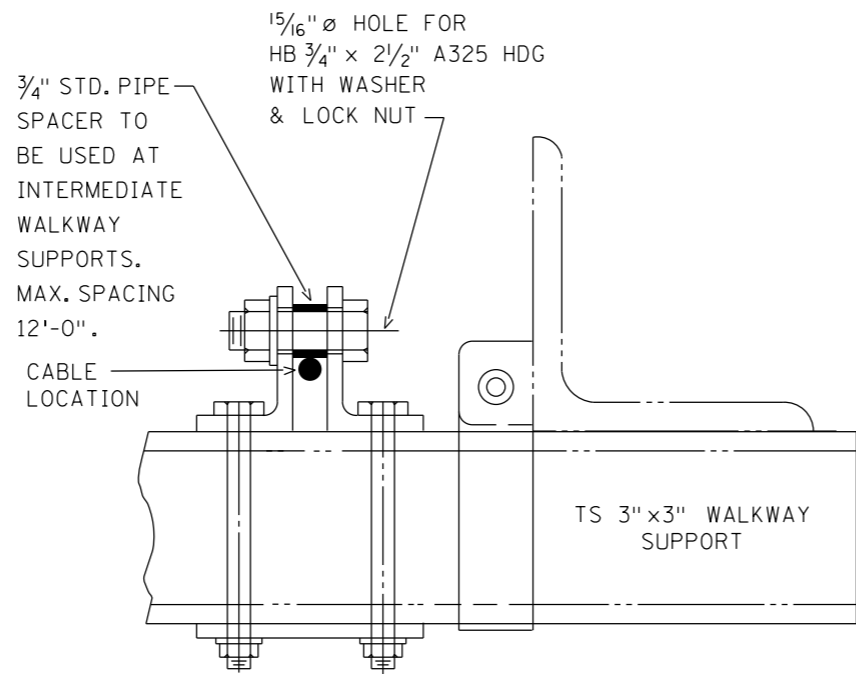
DISTRICT #: METRO  
IPLOT NAME: Safety Cable STD\*  
PATH & FILENAME: IP\_PWP-d1442\Safety Cable STD\*.dgn



MIDDLE CONNECTION



END CONNECTION



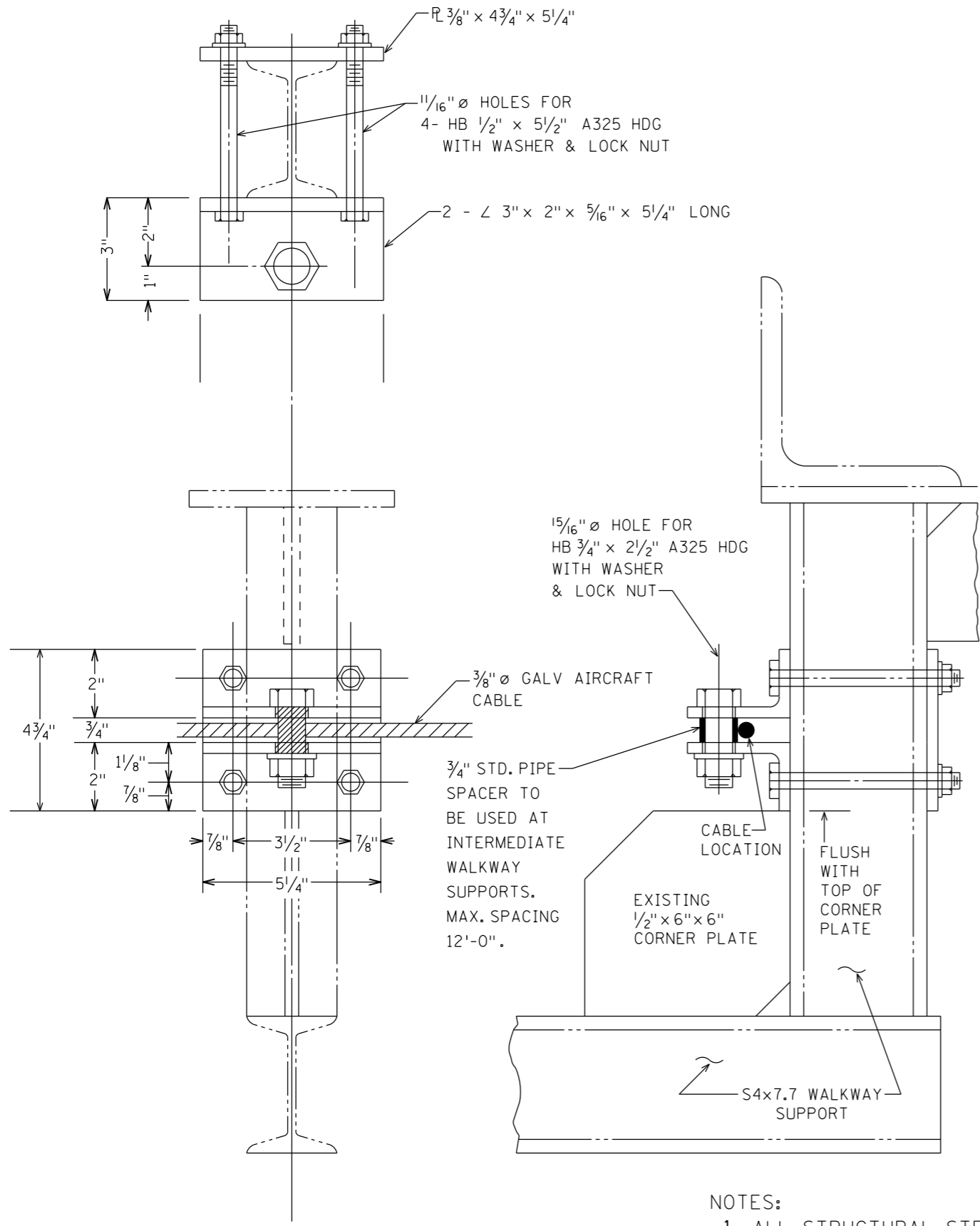
NOTES:

1. ALL STRUCTURAL STEEL PER Mn/DOT 3306. GALVANIZED PER Mn/DOT 3394.
2. ALL FASTENERS PER A325. GALVANIZED PER Mn/DOT 3392.
3. HB-HEX BOLT.
4. HDG-HOT DIP GALVANIZED.

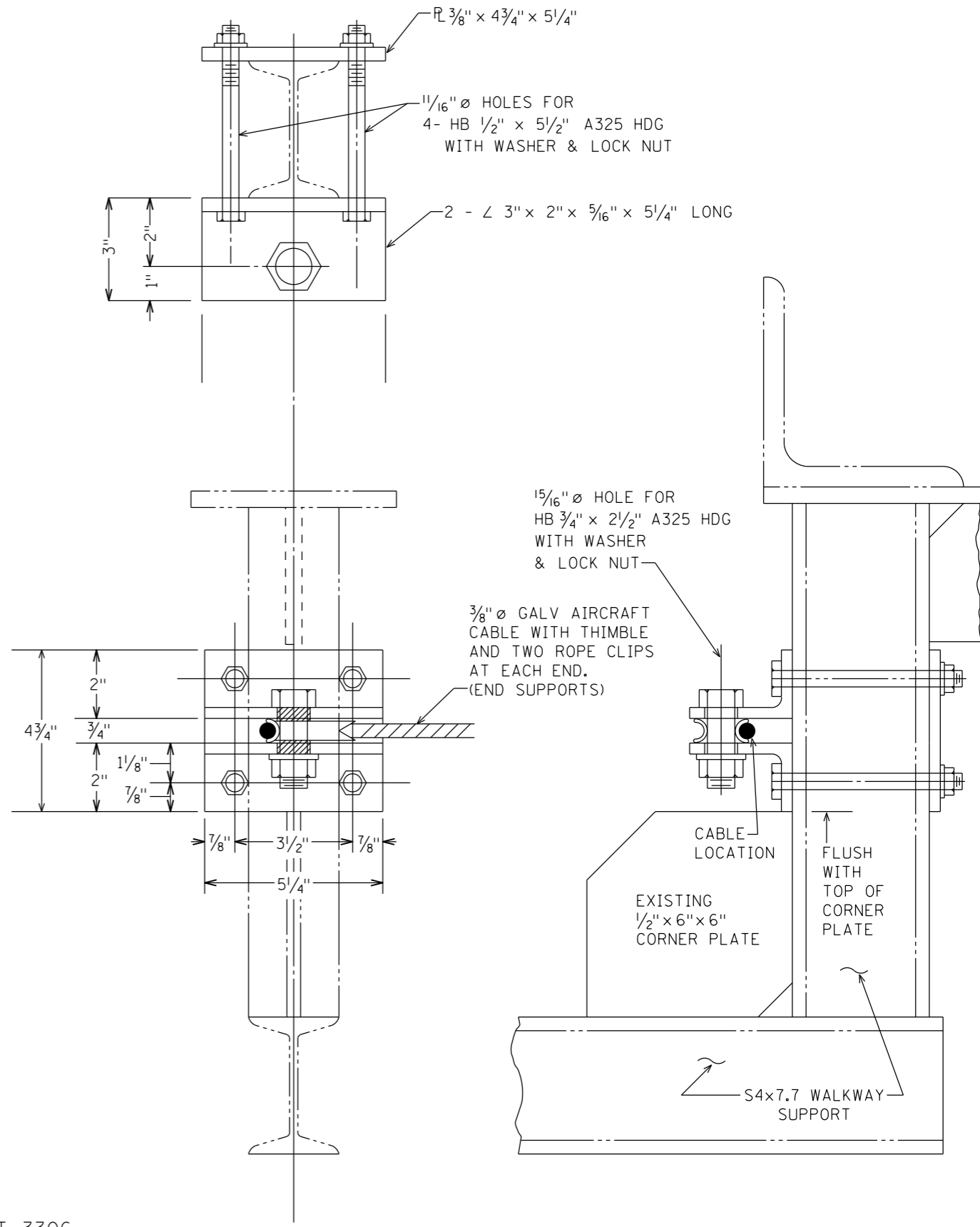
SAFETY CABLE FOR OH SIGNS  
DESIGN A

PLOTTED/REVISED: 11/8/2013

DISTRICT #: METRO  
IPLOT NAME: Safety Cable STD#1  
PATH & FILENAME: IP\_PWP-d1442\Safety Cable STD#1.dgn



MIDDLE CONNECTION



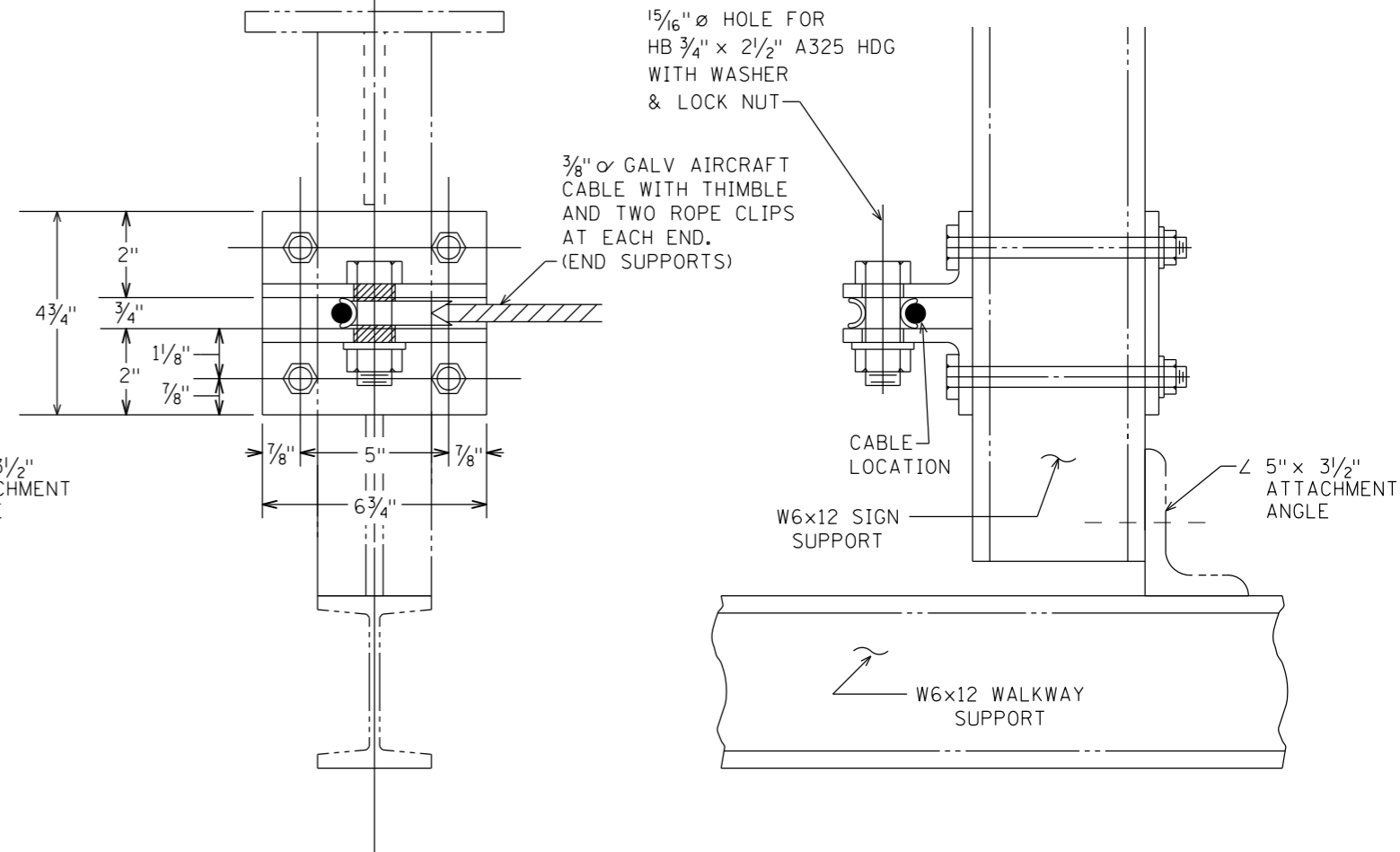
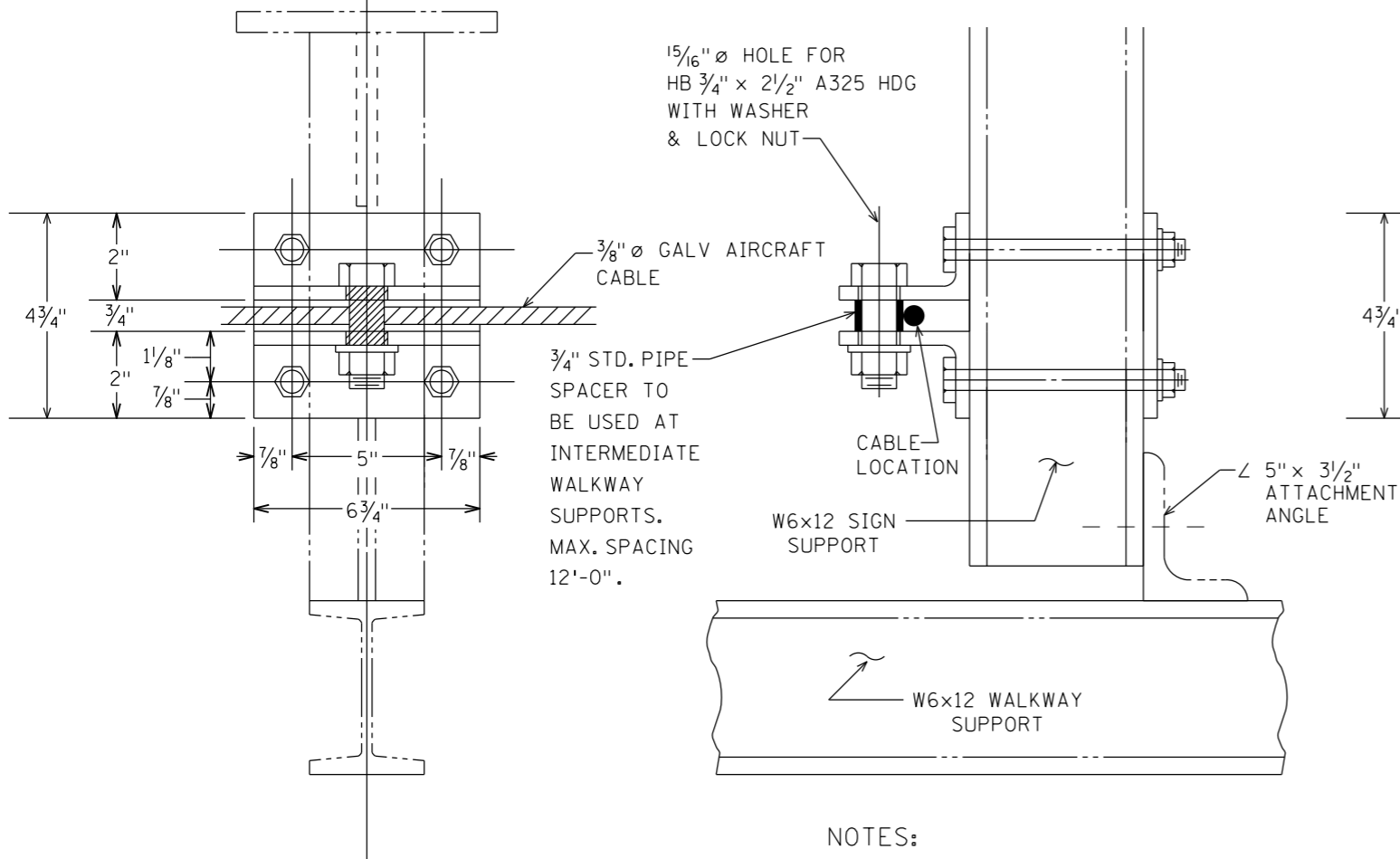
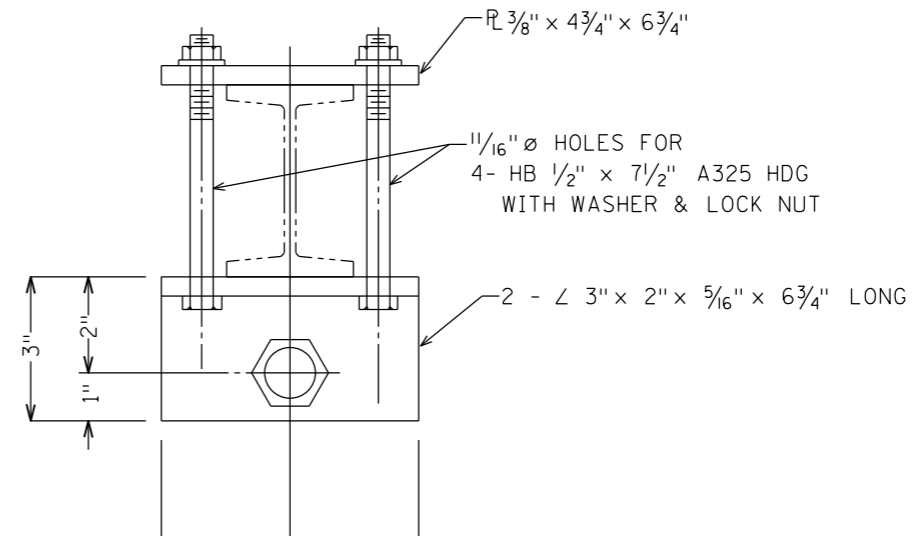
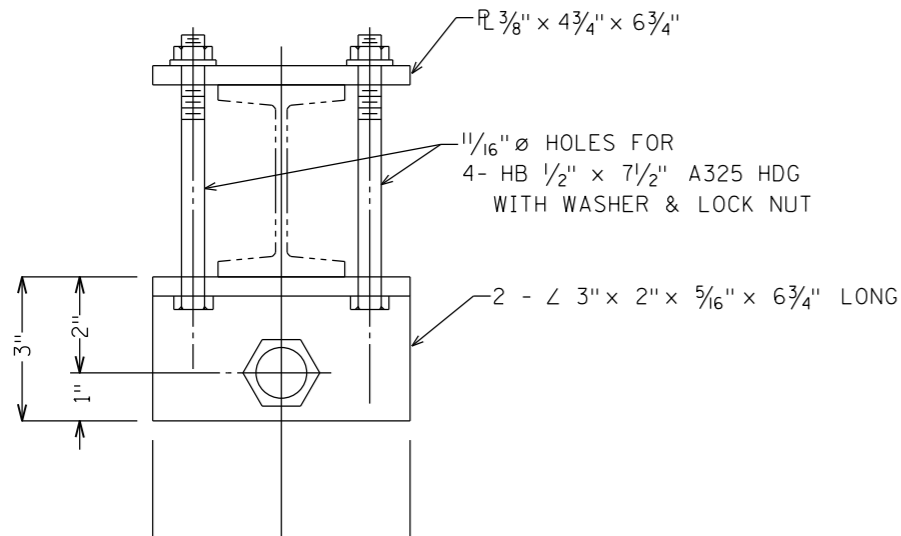
END CONNECTION

NOTES:

1. ALL STRUCTURAL STEEL PER Mn/DOT 3306. GALVANIZED PER Mn/DOT 3394.
2. ALL FASTENERS PER A325. GALVANIZED PER Mn/DOT 3392.
3. HB-HEX BOLT.
4. HDG-HOT DIP GALVANIZED.

SAFETY CABLE FOR OH SIGNS  
DESIGN B

PLOTTED/REVISED: 11/8/2013



MIDDLE CONNECTION

END CONNECTION

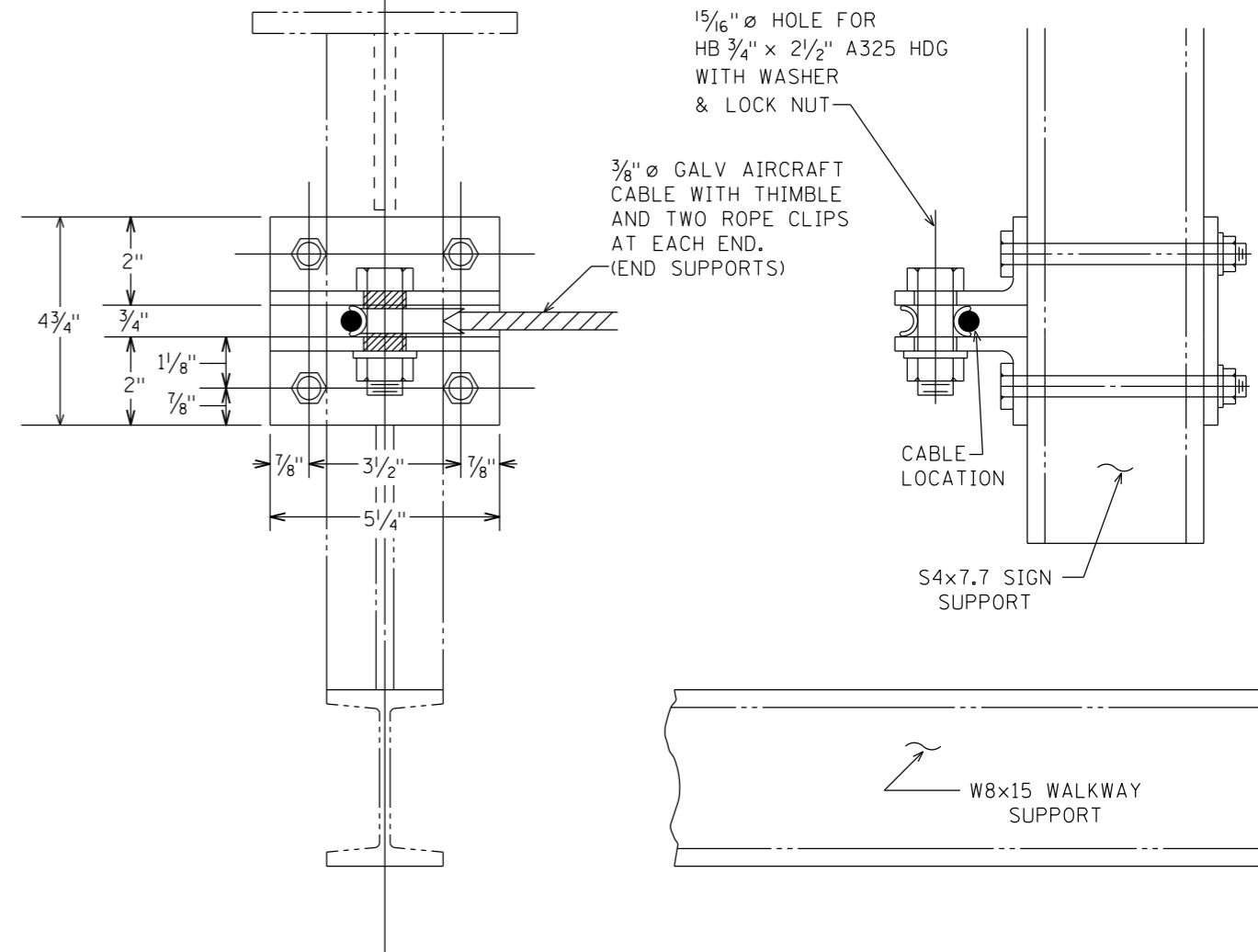
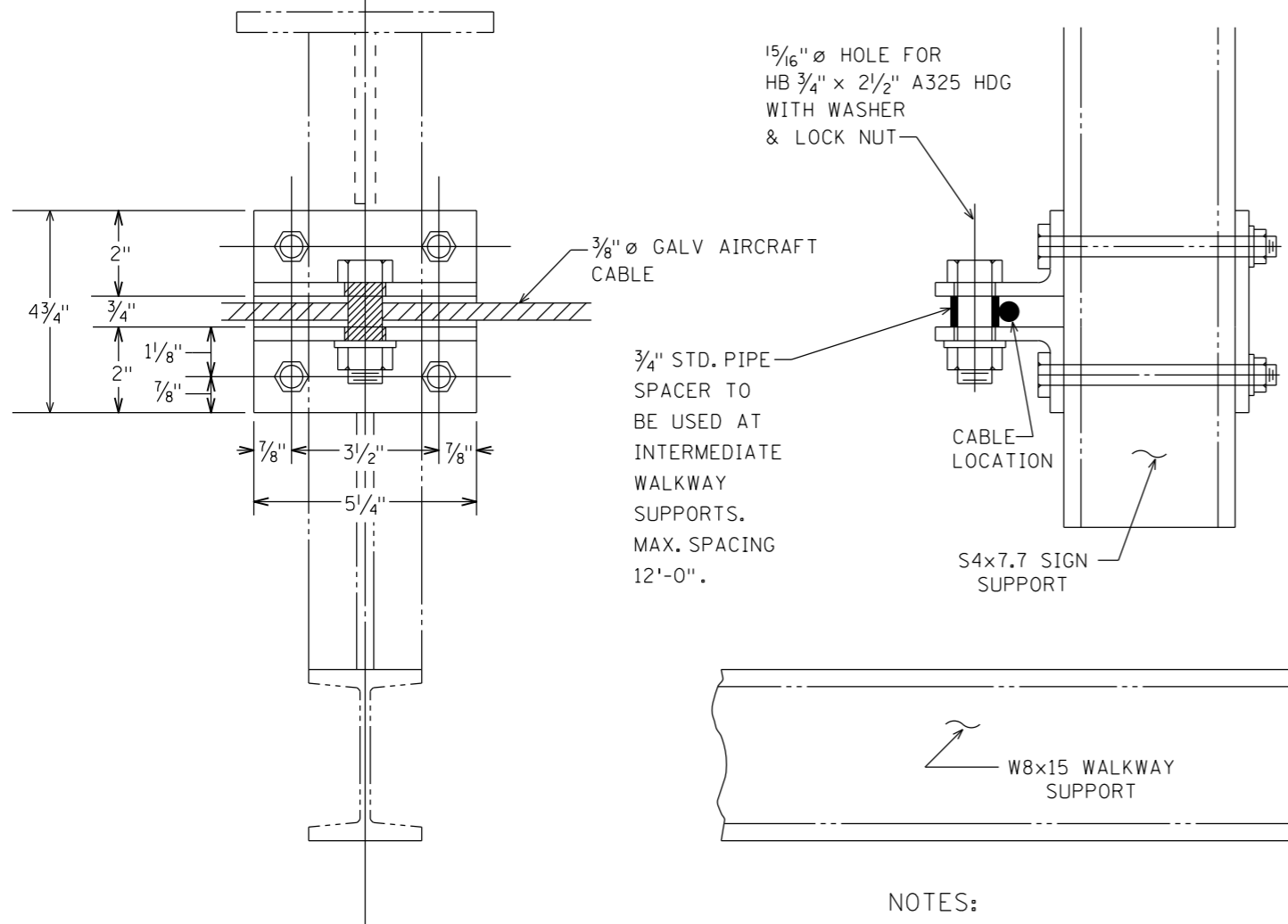
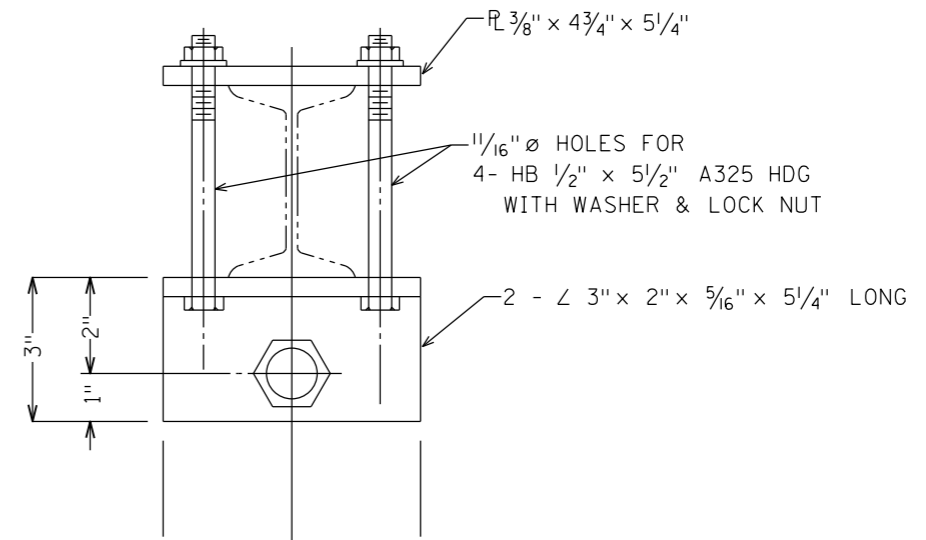
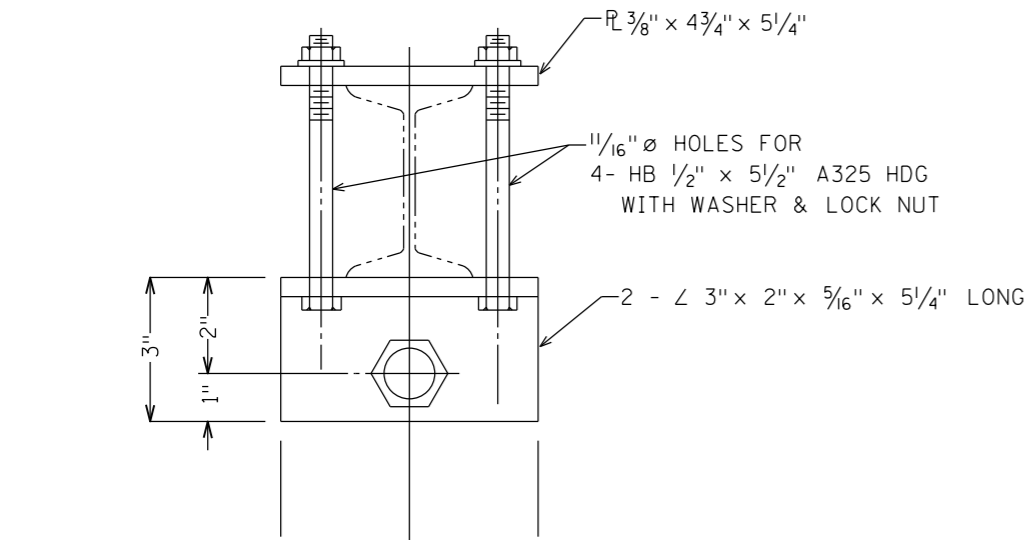
- NOTES:
1. ALL STRUCTURAL STEEL PER Mn/DOT 3306. GALVANIZED PER MnDOT 3394.
  2. ALL FASTENERS PER A325. GALVANIZED PER Mn/DOT 3392.
  3. HB-HEX BOLT.
  4. HDG-HOT DIP GALVANIZED.

SAFETY CABLE FOR OH SIGNS  
BRIDGE MOUNT

DISTRICT #: METRO  
 IPLOT NAME: Safety Cable-STD\*2  
 PATH & FILENAME: IP\_PWP-d1442\Safety Cable-STD\*.dgn

PLOTTED/REVISED: 11/8/2013

DISTRICT #: METRO  
PLOT NAME: Safety Cable STD\*3  
PATH & FILENAME: IP\_PWP-d1442\Safety Cable STD\*.dgn



MIDDLE CONNECTION

END CONNECTION

- NOTES:
1. ALL STRUCTURAL STEEL PER Mn/DOT 3306. GALVANIZED PER Mn/DOT 3394.
  2. ALL FASTENERS PER A325. GALVANIZED PER Mn/DOT 3392.
  3. HB-HEX BOLT.
  4. HDG-HOT DIP GALVANIZED.

SAFETY CABLE FOR OH SIGNS  
BRIDGE MOUNT