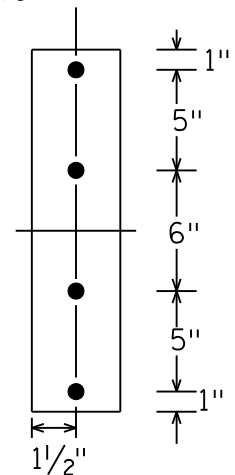
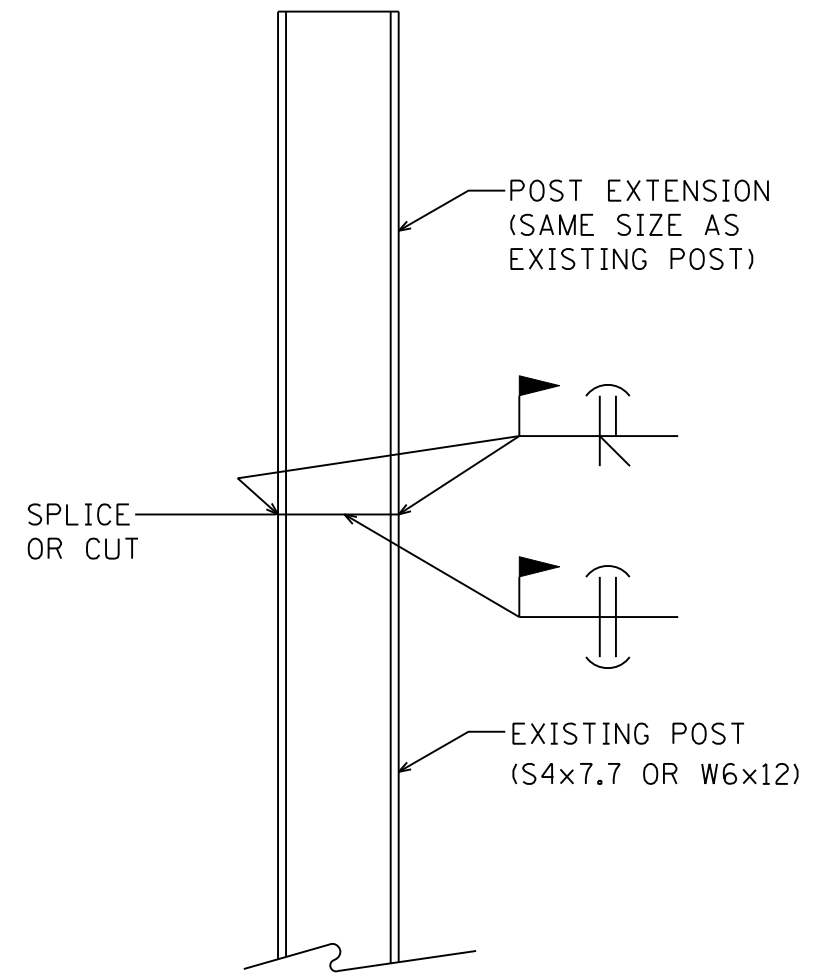


PANEL MOUNTING POST SPLICE PLATE  
 REQUIRED ON EACH SIDE OF WEB PER EXTENSION  
 (L 3/8" x 3" x 18")



BOLTED OPTION  
POST EXTENSION DETAIL



WELDED OPTION IS REQUIRED FOR  
 EXTENSION GREATER THAN 3'-0"

1. POST EXTENSIONS SHALL CONFORM TO MN/DOT 3306 AND SHALL BE GALVANIZED IN ACCORDANCE WITH MN/DOT 2471.3L2.
2. AREAS THAT ARE MARRED DUE TO CUTTING OR WELDING SHALL BE REPAIRED IN ACCORDANCE WITH ASTM A780.
3. FLAME CUTTING WILL BE PERMITTED IN ACCORDANCE WITH MN/DOT 2471.3C4.
4. ALL FASTENERS SHALL BE IN ACCORDANCE WITH MN/DOT 3391.2B AND SHALL BE GALVANIZED EITHER BY THE HOT-DIP PROCESS IN ACCORDANCE WITH ASTM A153, OR BY THE MECHANICAL PROCESS IN ACCORDANCE WITH ASTM B695, CLASS 50 OR GREATER.

PANEL MOUNTING POST MODIFICATION DETAILS