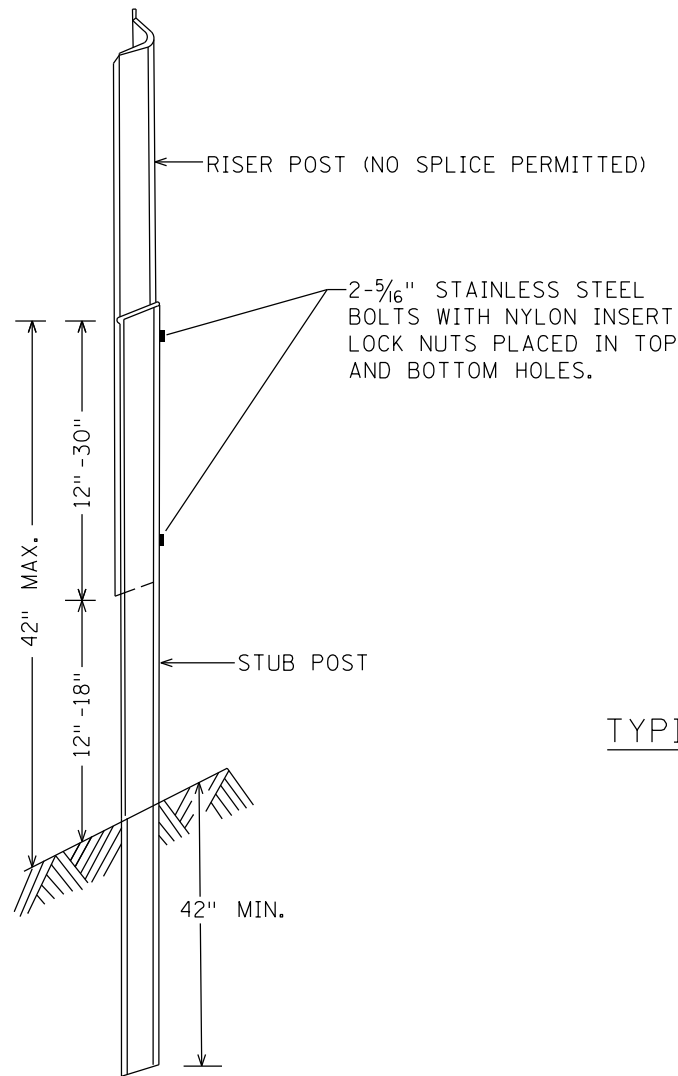
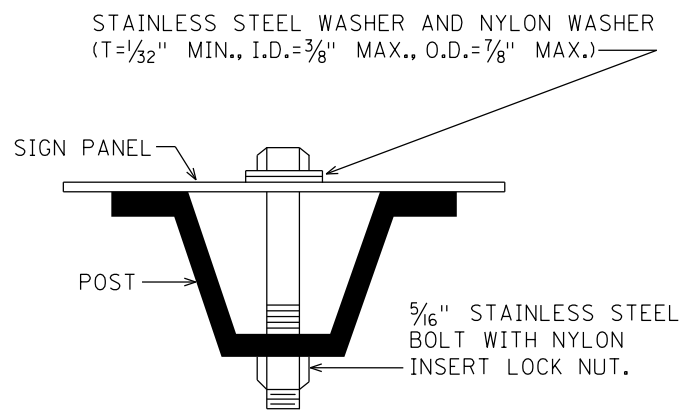


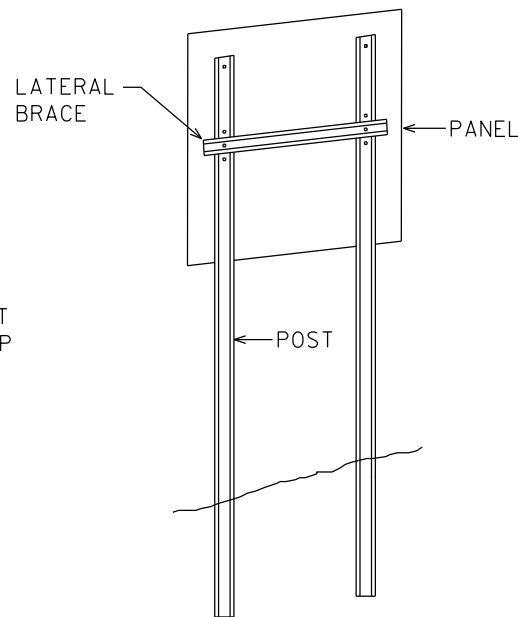
TYPE C & D POST



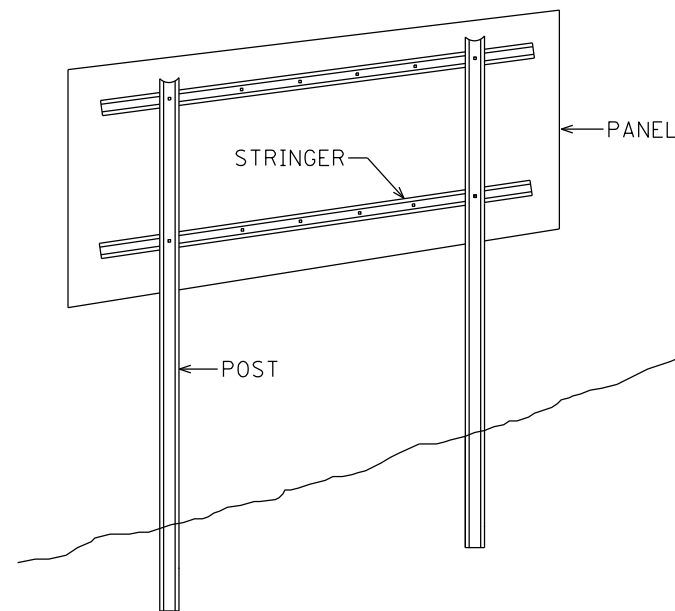
U POST BREAKAWAY SPLICE



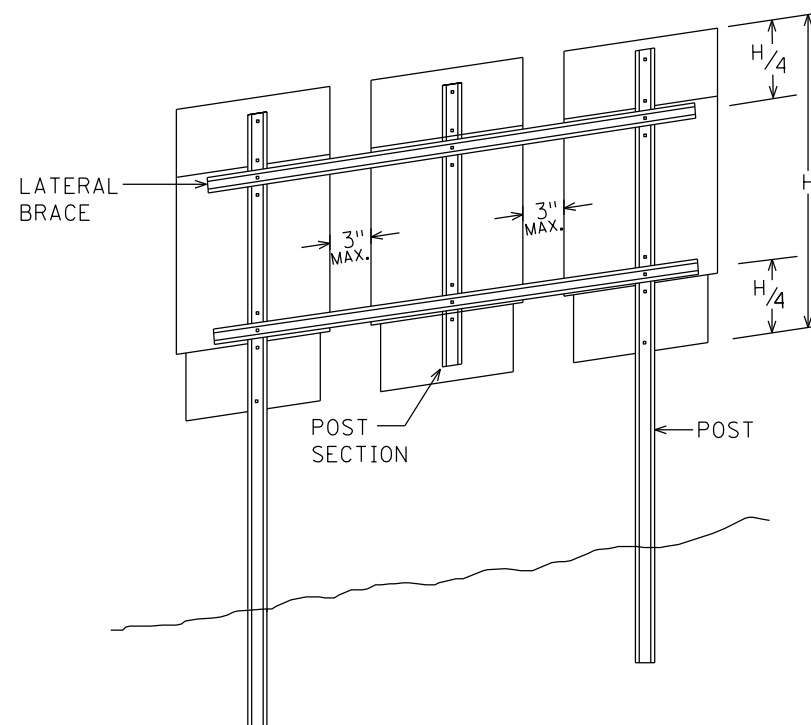
U POST MOUNTING  
TYPE C SIGNS



TYPICAL TYPE C INSTALLATION



TYPICAL TYPE D INSTALLATION



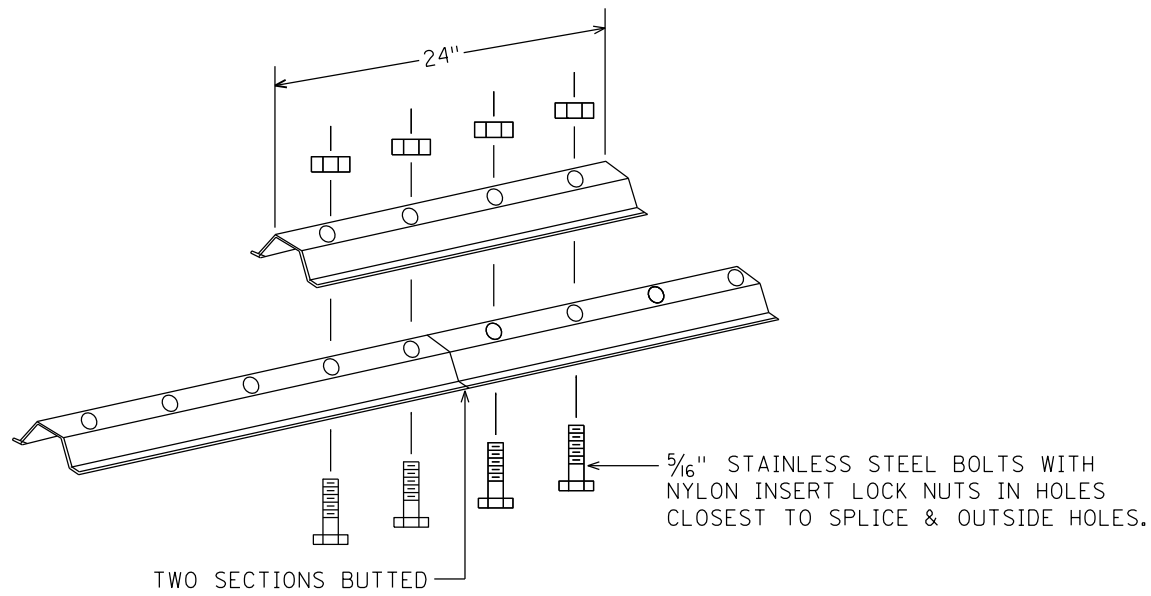
MODIFIED TYPE C INSTALLATION

NOTES:

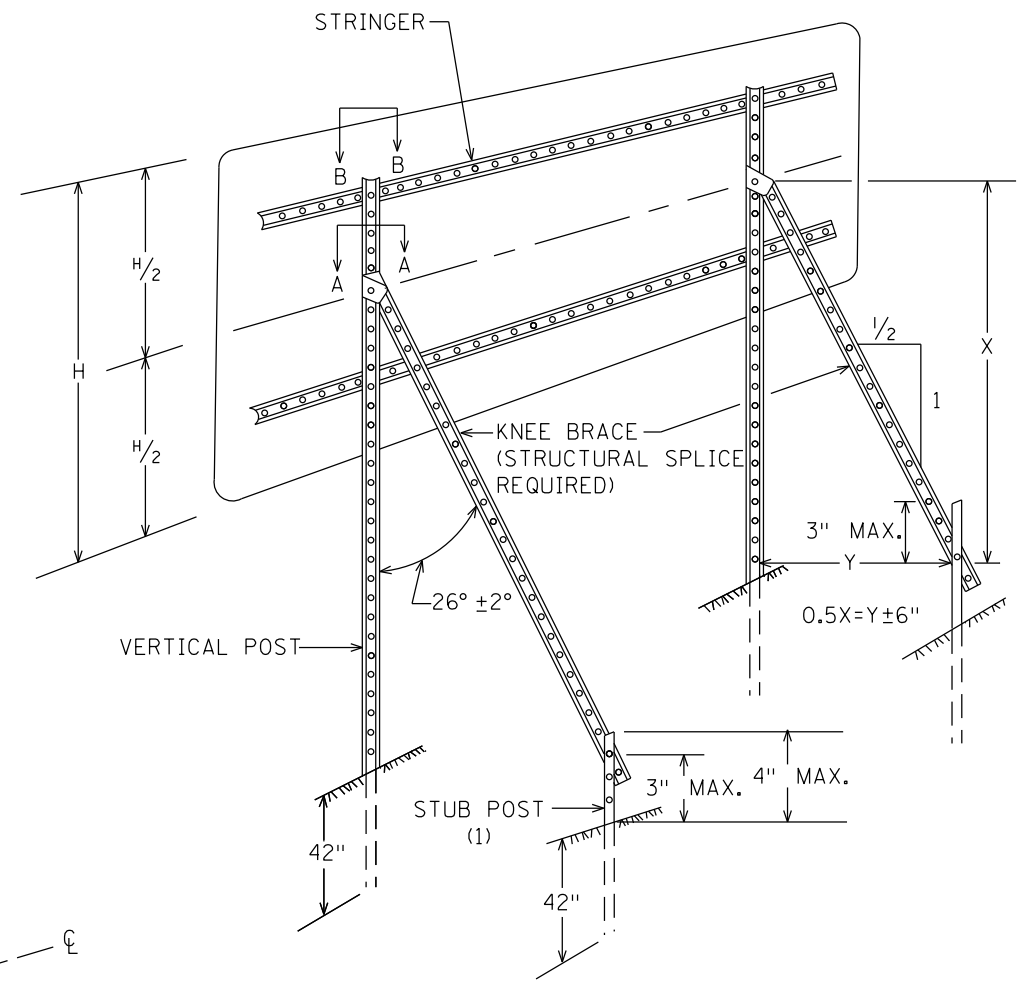
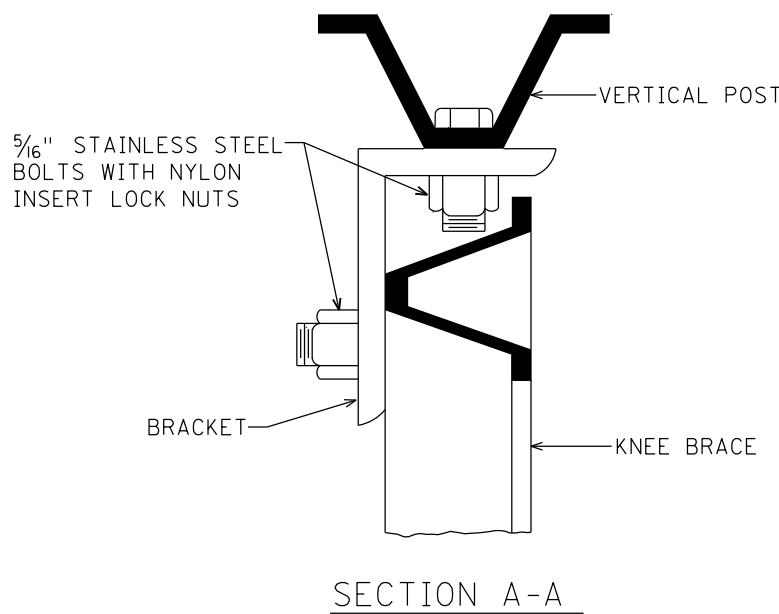
1. USE 3 LB/FT STUB POSTS. SHALL CONFORM TO MNDOT 3401.
2. USE 2.5 LB/FT RISER POSTS, STRINGERS, KNEE BRACES AND LATERAL BRACES. ALL SHALL CONFORM TO MNDOT 3401.
3. SEE SIGN DATA SHEETS FOR NUMBER OF POSTS, KNEE BRACES, POST LENGTHS AND SPACINGS, AS DETERMINED FROM TEM CHARTS 6.3 AND 6.4.
4. IF MORE THAN TWO POSTS ARE NEEDED, THE MINIMUM SPACING SHALL BE 45" BETWEEN POSTS.
5. TYPE D SIGN PANELS SHALL BE BOLTED TO STRINGERS AT 24" MAXIMUM INTERVALS IN ACCORDANCE WITH THE TYPE D STRINGER AND PANEL - JOINT DETAIL (SEE MNDOT STANDARD SIGNS AND MARKINGS MANUAL).
6. MOUNTING (PUNCH CODE) FOR TYPE C SIGN PANELS SHALL BE AS INDICATED IN THE MNDOT STANDARD SIGNS AND MARKINGS MANUAL UNLESS OTHERWISE SPECIFIED.
7. ALL RISER (VERTICAL) U POSTS SHALL BE SPLICED. DRIVEN STUB POSTS SHALL BE AT LEAST 7' LONG.
8. USE STAINLESS STEEL 5/16" BOLTS, WASHERS AND NYLON INSERT LOCK NUTS AS SHOWN FOR ALL GROUND MOUNTED AND OVERHEAD MOUNTED SIGNS.
9. STAINLESS STEEL WASHER WITH SAME DIMENSIONS SHALL BE PROVIDED BETWEEN ALL NYLON WASHERS AND BOLT HEADS.
10. BRACING STUBS SHALL BE NO MORE THAN 4" ABOVE GROUND AND EMBEDDED AT LEAST 42".
11. A-FRAME BRACKET SHALL BE STEEL CONFORMING TO MNDOT 3306 AND GALVANIZED IN ACCORDANCE WITH MNDOT 3394.
12. COLLARS SHALL BE USED TO SHIM OVERLAYS AND LEGEND COMPONENTS AWAY FROM PANEL WHERE INTERFERENCE WITH BOLT HEADS IS ENCOUNTERED. MNDOT 3352.2A6.
13. 2 POST TYPE C SIGNS SHALL BE REINFORCED WITH AT LEAST ONE LATERAL BRACE. INSTALLATIONS WHERE THE TOTAL PANEL HEIGHT IS 60" OR MORE SHALL HAVE TWO LATERAL BRACES LOCATED APPROXIMATELY AT THE QUARTER POINTS.
14. WHERE 2 SINGLE POST TYPE C SIGNS ARE INSTALLED SIDE BY SIDE, THEY SHALL BE REINFORCED Laterally BY AT LEAST 2 BRACES, BOLTED AT EACH POST AND LOCATED APPROXIMATELY AT THE QUARTER POINTS.
15. WHERE 3 OR MORE TYPE C SIGNS ARE INSTALLED SIDE BY SIDE, THEY SHALL BE REINFORCED Laterally BY AT LEAST 2 BRACES, BOLTED AT EACH POST AND POST SECTION AND LOCATED APPROXIMATELY AT THE QUARTER POINTS AS SHOWN IN MODIFIED TYPE C INSTALLATION.

TYPE C & D SIGN  
STRUCTURAL DETAILS

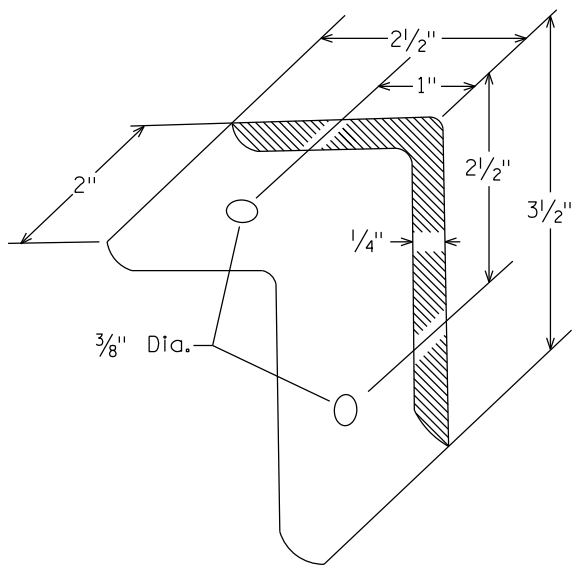
PLOTTED/REVISED: 1/25/2016



LATERAL BRACE OR STRINGER  
SPLICE DETAIL (EXPLODED VIEW)

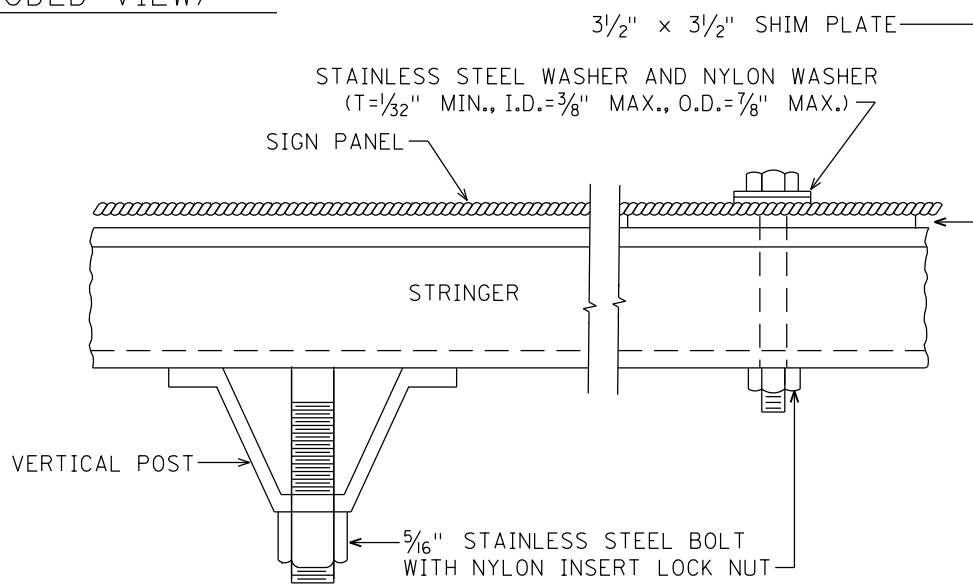


TYPICAL "A-FRAME" INSTALLATION  
TYPE "D" SIGNS

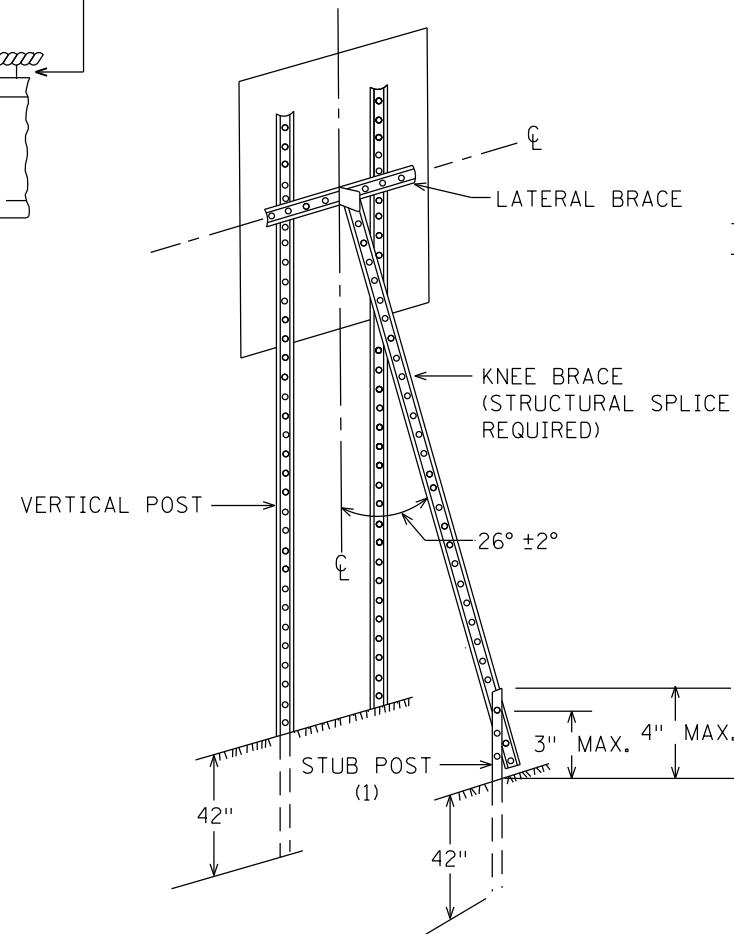


A-FRAME BRACKET

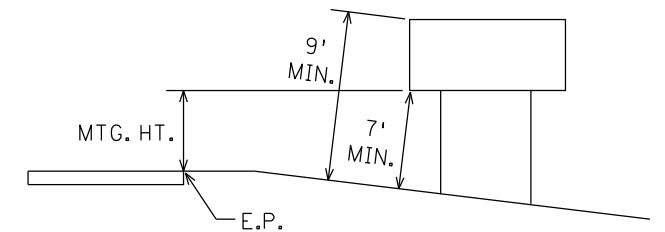
(STEEL MNDOT 3306 GALVANIZED PER MNDOT 3394)



SECTION B-B



TYPICAL "A-FRAME" INSTALLATION  
TYPE "C" SIGNS

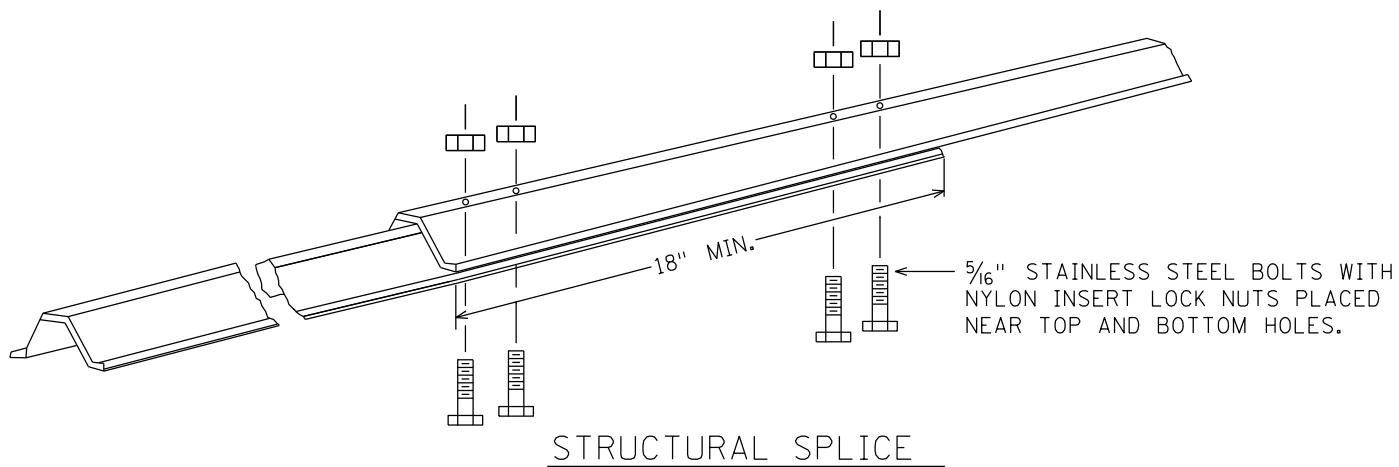


TYPICAL MOUNTING

(1) OFFSET STUB POST 1' TOWARD ROADWAY RELATIVE TO VERTICAL POST. ATTACH STUB POST AND KNEE BRACE BACK TO BACK.

TYPE C & D SIGN  
STRUCTURAL DETAILS

Sheet 2 of 3



(USE WHEN IT IS NECESSARY TO FABRICATE THE CORRECT LENGTH OF POST FROM TWO PIECES)

REVISED: 12-4-2013

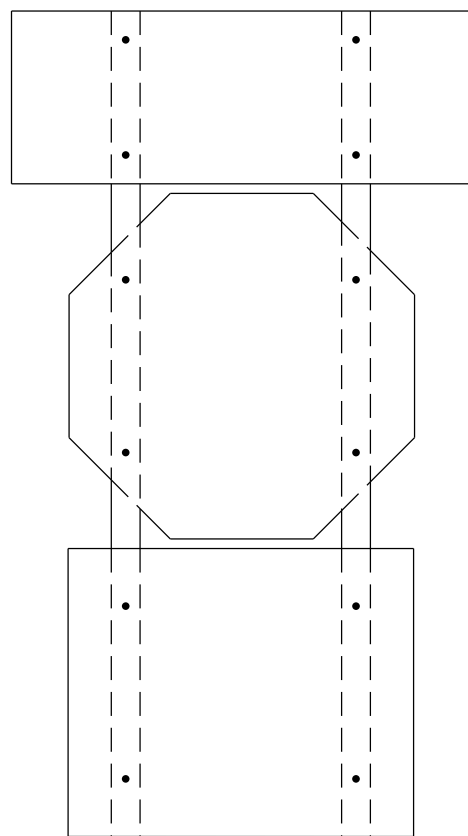
STATE PROJ. NO.

SHEET NO.

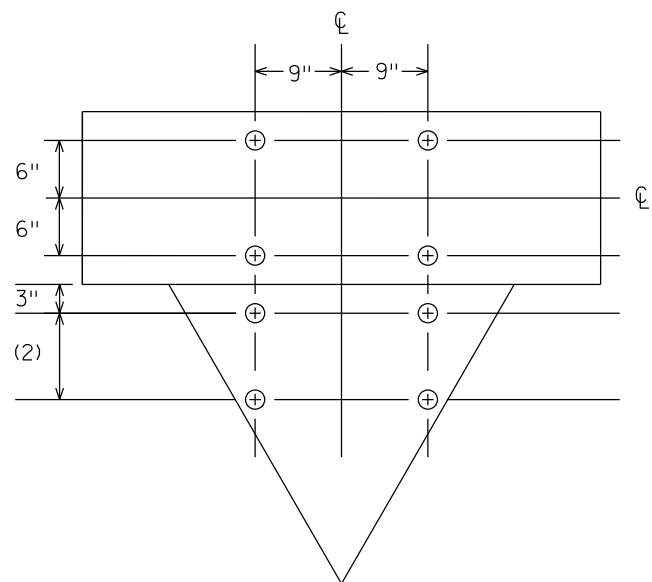
OF

SHEETS

DISTRICT #: METRO  
PLOT NAME: C&D-SIGN-Structural Details  
PATH & FILENAME: IP\_PWP-d1624788\C&D-SIGN-Structural Details.dgn

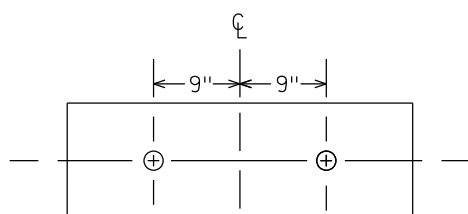


R6-1, R1-1 & (R6-3 OR R6-3a)  
MOUNTING

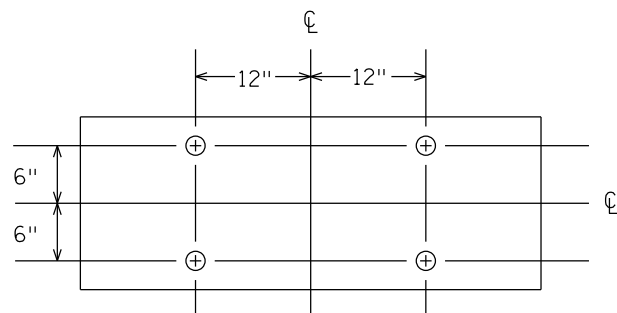


PUNCHING FOR R6-1 (54" x 18") AND  
R1-2 (36" x 36" x 36" OR 48" x 48" x 48")

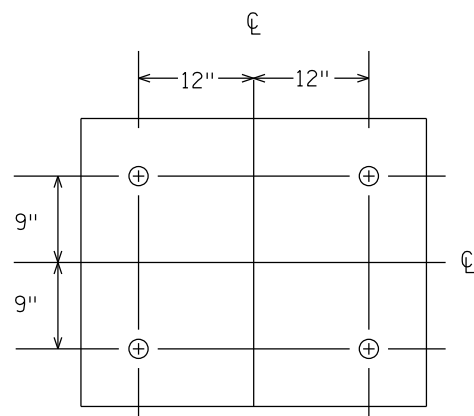
- (2) 9" FOR 36" x 36" x 36"
- 18" FOR 48" x 48" x 48"



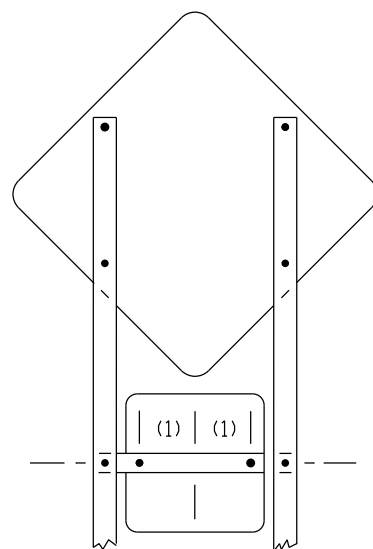
PUNCHING FOR R6-1 (36" x 12")



PUNCHING FOR R6-1 (54" x 18")

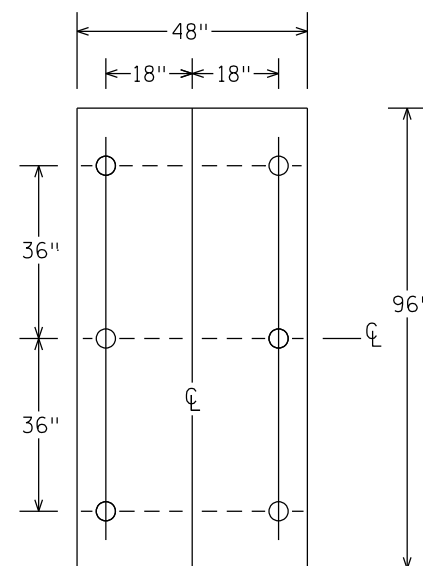


PUNCHING FOR R6-3 OR R6-3a (36" x 30")

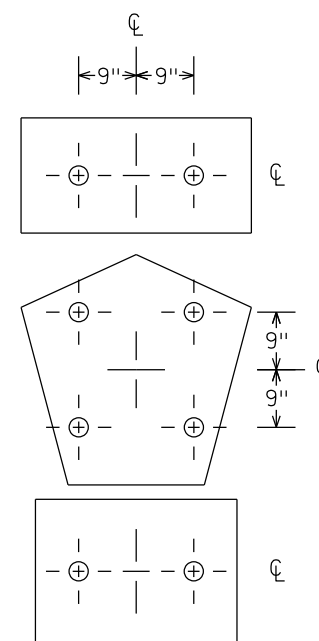


WARNING SIGN [30" x 30 OR 48" x 48"] AND  
WARNING PLAQUE [18" x 18" OR 30" x 30"]  
PUNCHING AND MOUNTING

- (1) 6" FOR WARNING PLAQUE (18" x 18")
- 12" FOR WARNING PLAQUE (30" x 30")



PUNCHING FOR R2-4b  
SPEED LIMIT



(M3-1A, M3-2A, M3-3A OR M3-4A) [36" x 18"] AND  
M1-6 [36" x 36"] AND  
(M5-1A, M5-2A, M6-1A, M6-2A, M6-3A M6-4A, M6-5A OR M6-6A) [30" x 24"]  
PUNCHING

TYPE C & D SIGN  
STRUCTURAL DETAILS