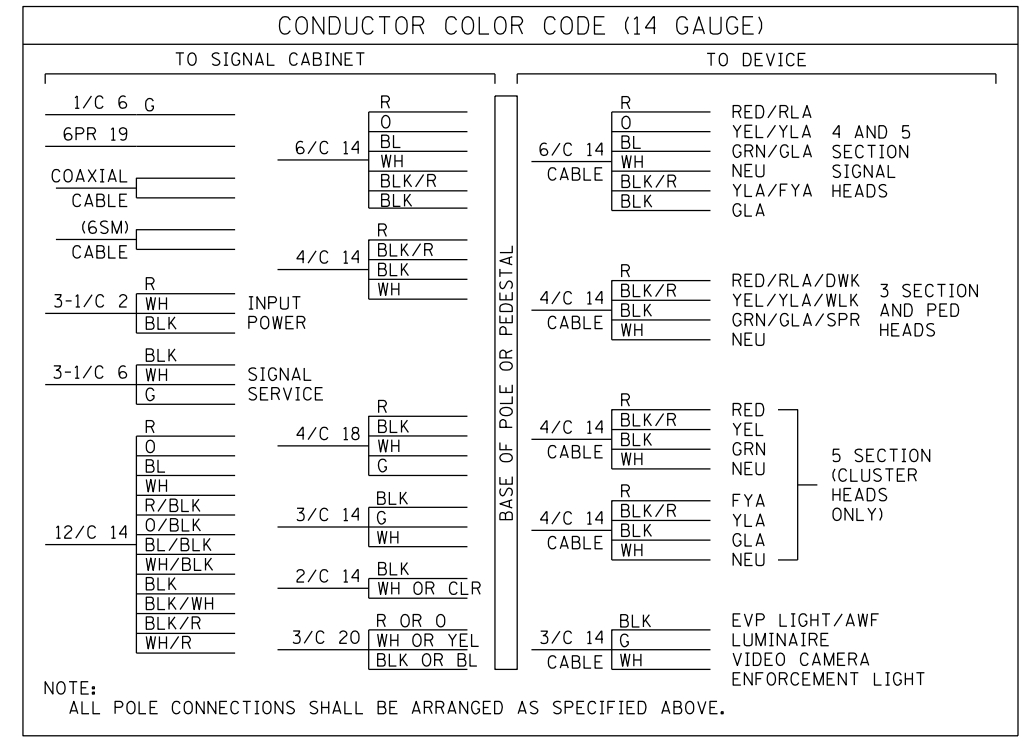
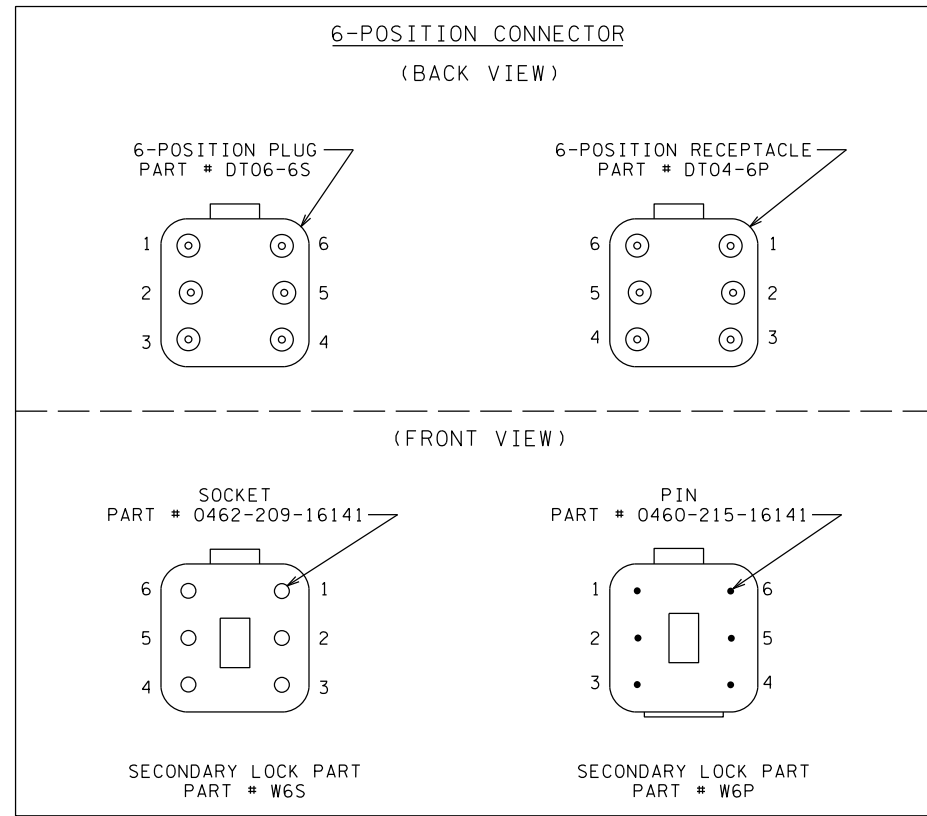
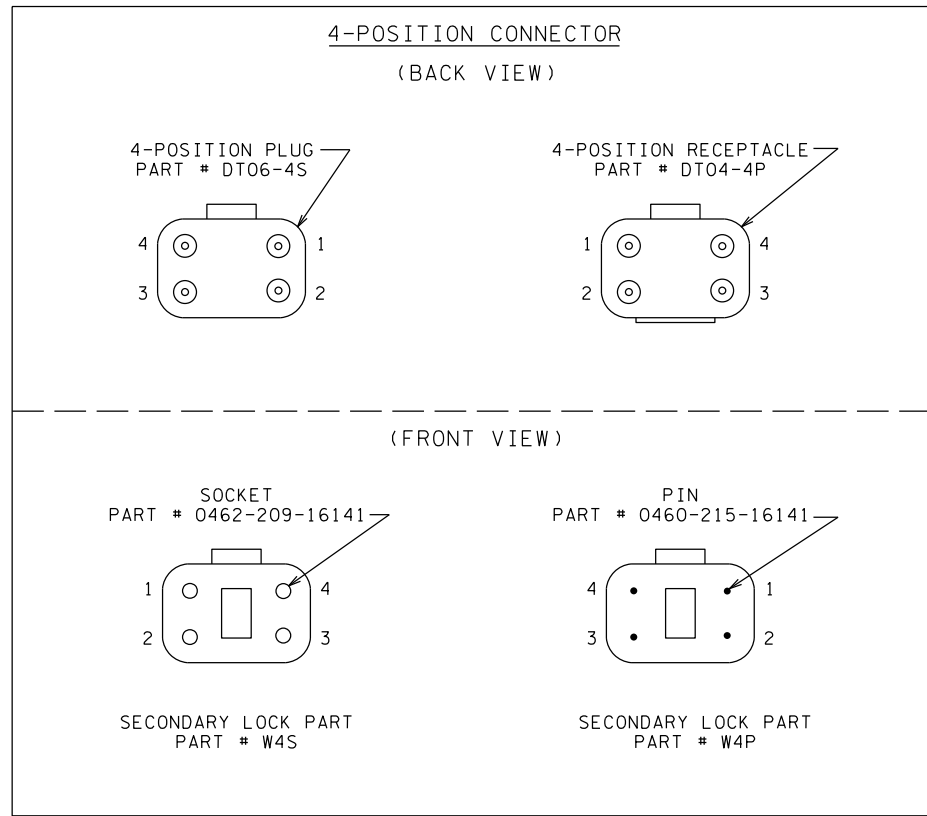


PLOTTED/REVISED: \$\$\$@DATE@\$\$\$



NOTE:
ALL POLE CONNECTIONS SHALL BE ARRANGED AS SPECIFIED ABOVE.

Wire to Control Cabinet	Connector pin #	Wire to Signal Indication	Signal Indication
R or R/BLK or BLK	1	R	RED or DWK
O or O/BLK or BLK/WH or BLK	2	BLK/R	YEL or WLK
BL or BL/BLK or BLK/R or BLK	3	BLK	GRN or SPR
WH or WH/BLK or WH/R	4	WH	NEU

Wire to Control Cabinet	Connector pin #	Wire to Signal Indication	Signal Indication
R	1	R	RED
O	2	O	YEL
BL	3	BL	GRN
WH	4	WH	NEU
O/BLK or BLK/R (6/C)	5	BLK/R	YLA or FYLA
BL/BLK or BLK (6/C)	6	BLK	GLA

Wire to Control Cabinet	Connector pin #	Wire to Signal Indication	Signal Indication
BLK	1	BLK	EVP LHT or RED or YEL or ENF LHT or AWF
(Not Used)	2	(Not Used)	(Not Used) (See Note #8)
G	3	G	EQ.G
WH	4	WH	NEU

R	Red
O	Orange
BL	Blue
WH	White
BLK	Black
BRN	Brown
CL	Clear
G	Green
R/BLK	Red with Black Stripe
O/BLK	Orange with Black Stripe
BL/BLK	Blue with Black Stripe
WH/BLK	White with Black Stripe
WH/R	White with Red Stripe
BLK/WH	Black with White Stripe
BLK/R	Black with Red Stripe

12 Conductor Wire to Control Cabinet	Connector pin #	4 Conductor to Signal Indication	Signal Indication
R	1	R	RED
O	2	BLK/R	YEL
BL	3	BLK	GRN
WH	4	WH	NEU
R/BLK	1	R	FYA
O/BLK	2	BLK/R	YLA
BL/BLK	3	BLK	GLA
WH/BLK	4	WH	NEU

Type	Name	Specification Number
1/C 2	Power Conductors	3815.2B.1
1/C 6	Power Conductors	3815.2B.1
1/C 6 INS.GR.	Grounding Conductors	3815.2B.5
2/C 14	Loop Detector Lead-In Cable	3815.2C.4
3/C 14	Signal Control Cable	3815.2C.3
4/C 14	Signal Control Cable	3815.2C.3
6/C 14	Signal Control Cable	3815.2C.3
12/C 14	Signal Control Cable	3815.2C.3
6PR 19	Telephone Cables Outdoor	3815.2C.6.b
3/C 20	EVP Detector Cable	3815.2C.5

NOTES:

- DT04-P RECEPTACLE SHALL BE TERMINATED TO THE WIRING HARNESS RUNNING FROM THE BASE/JUNCTION BOX OF THE POLE TO SIGNAL INDICATIONS.
- DT06-S PLUG SHALL BE TERMINATED TO THE CABLES RUNNING FROM THE TRAFFIC SIGNAL CABINET TO THE BASE/JUNCTION BOX OF THE POLE.
- THERE SHALL BE A MINIMUM OF 24 INCHES OF SLACK ON EACH CABLE IN EVERY POLE BASE /JUNCTION BOX.
- STRIP A MAXIMUM OF 6 INCHES OF THE OUTER JACKET OF EACH SIGNAL CABLE.
- STRIP .250 INCHES OF INSULATION FROM EACH INDIVIDUAL CONDUCTOR.
- CRIMP PINS OR SOCKETS USING RATCHETING TYPE CRIMPING TOOL HDT-48-00. NO OTHER CRIMPING TOOL WILL BE ALLOWED.
- WIRES MUST BE TERMINATED AS DETAILED IN TABLES DEPENDING ON WIRE COUNT.
- ANY UNUSED PIN MUST HAVE A SEALING PLUG PLACED IN BOTH THE PLUG & RECEPTACLE (PART # 114017).
- LABEL EACH HALF OF THE CONNECTOR (PLUG AND RECEPTACLE) WITH THE DEVICE DESIGNATION (AS INDICATED IN THE WIRING DIAGRAM) USING A PERMANENT BLACK MARKER.

BY	DATE	REVISIONS	SYSTEM ID: _____ T.E. _____	S.A.P. NO. _____	DRAWN BY: _____	CKD BY: _____	DATE: 02-22-19
			METER ADDRESS: _____	CERTIFIED BY: _____		LIC. NO. _____ DATE: _____	
			OLD SYSTEM ID: _____	STATE PROJ. NO. _____ (T.H. _____ SHEET NO. _____ OF _____ SHEETS)			

TRAFFIC SIGNAL POLE WIRING CONNECTOR DETAIL

DISTRICT #: \$@DISTRICT@\$
PLOT NAME: \$@PLOT\$NAME@\$
PATH & FILENAME: \$\$\$@PATH\$FILENAME@\$\$\$