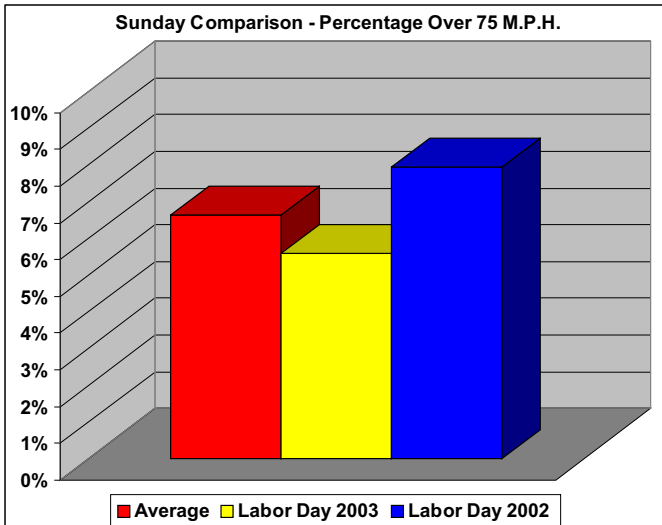
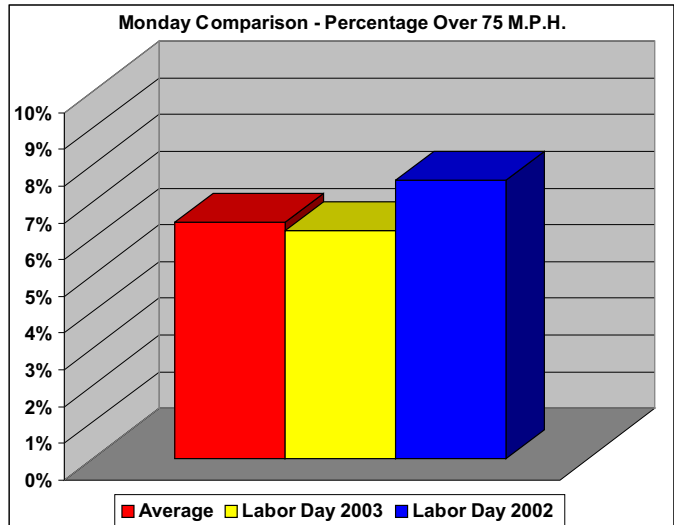
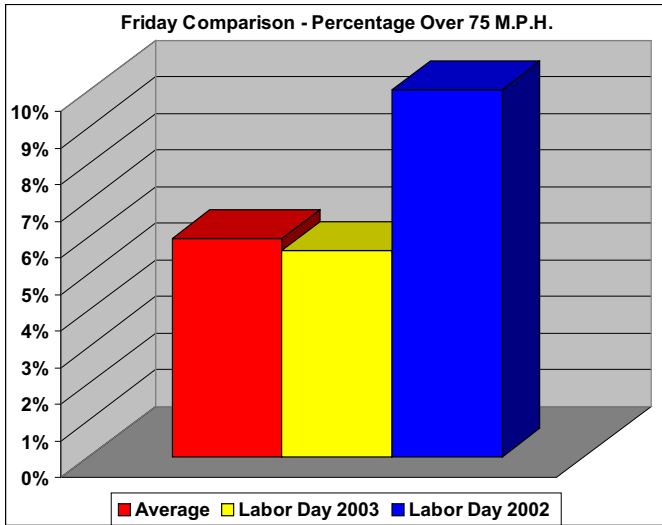
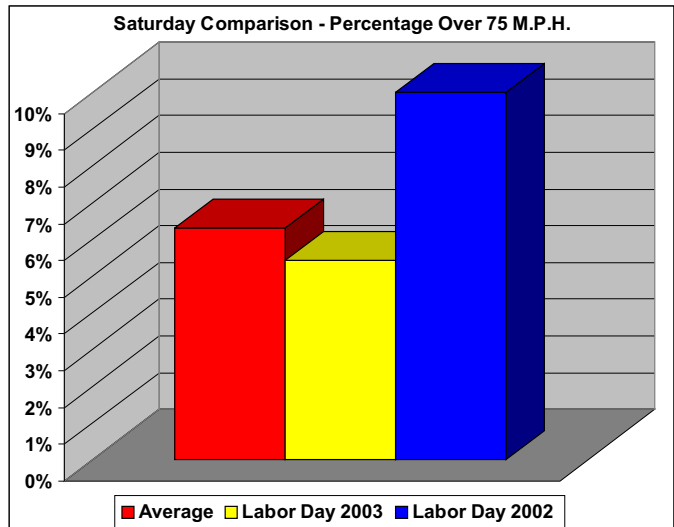




# Speed Reduction Progress Report on Trunk Highway 52

by the Mn/DOT Office of Traffic, Security, and Operations



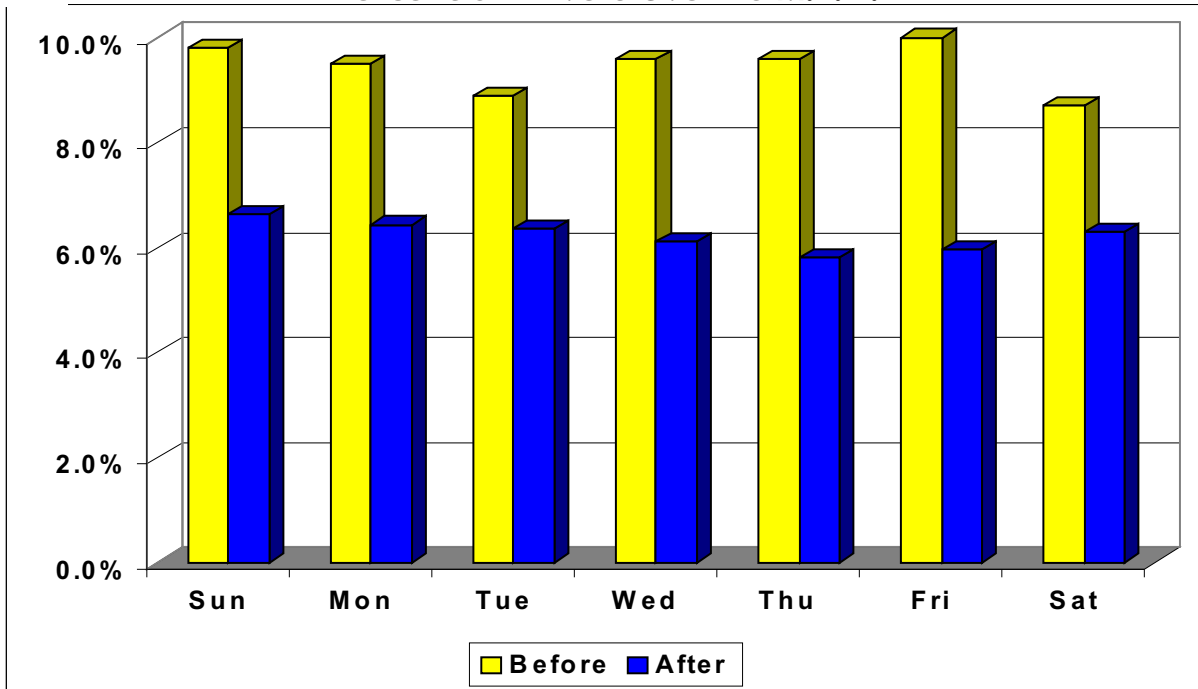
A total of 845,180 vehicles were counted and their speeds recorded by ATR Station 382 on Trunk Highway 52, 1.1 miles north of Dakota Count Road 62. This total includes data collected between 12:00 A.M. on 8-3-2003 and 11:59 P.M. on 8-23-2003; between 12:00 A.M. on 8-29-2003 and 11:59 P.M. on 9-1-2003; between 12:00 A.M. on 8-30-2002 and 11:59 P.M. on 9-2-2002. The "Average" bar represents a typical day and is the average of three 24-hour periods for that day.



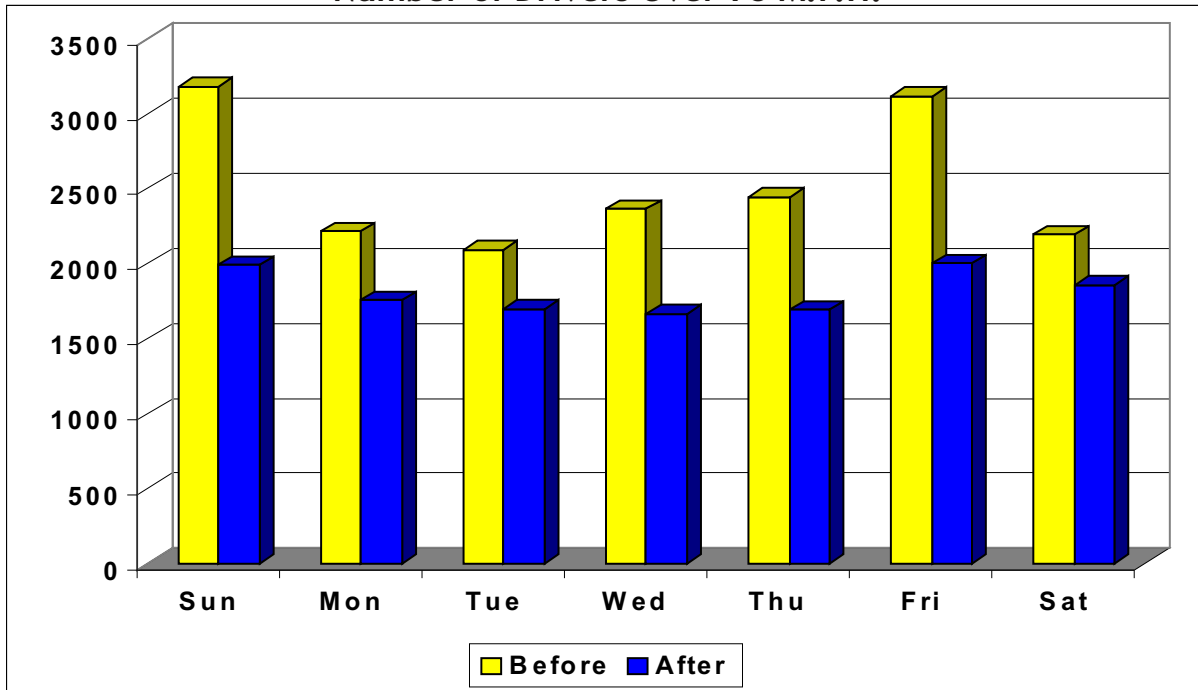
# Speed Reduction Progress Report on Trunk Highway 52

by the Mn/DOT Office of Traffic, Security, and Operations

Percent of Drivers Over 75 M.P.H.



Number of Drivers Over 75 M.P.H.



A total of 1,167,601 vehicles were counted and their speeds recorded by ATR Station 382 on Trunk Highway 52, 1.1 miles north of Dakota Count Road 62. The "Before" values represent data collected between 12:00 A.M. on 10-23-2002 and 11:59 P.M. on 11-12-2002, before a series of enforcement programs. The "After" values represent data collected between 12:00 A.M. on 8-3-2003 and 11:59 P.M. on 8-23-2003, after a series of enforcement programs. Each value represents a typical day and is the average of three 24-hour periods for that day. For more information please contact Daniel Brannan by phone (651) 284-3463 or by e-mail [daniel.brannan@dot.state.mn.us](mailto:daniel.brannan@dot.state.mn.us). This report is available online at <http://www.dot.state.mn.us/trafficeng/safety>.