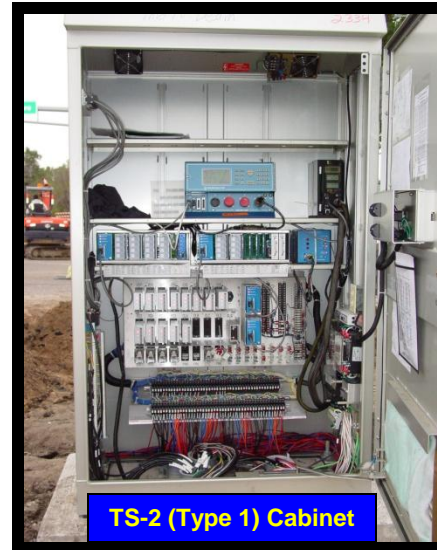


TRAFFIC SIGNAL CABINETS

The traffic signal cabinet is the heart and brain of the traffic signal. It provides power to the signal and contains the electronic control equipment that senses traffic movements on the road, and controls the signal lights.



With the exception of wood pole temporary signal systems, all new Mn/DOT signal projects will be furnished with the new TS-2 (Type 1) traffic signal cabinet and control equipment. For Mn/DOT projects, the traffic signal cabinet will be furnished to the Contractor for installation.

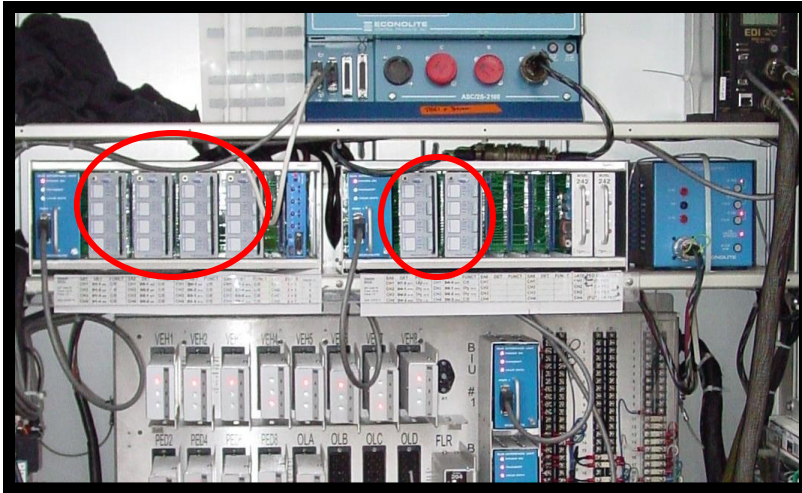


The Contractor is required to pick up the Mn/DOT furnished cabinet for the project and must notify E.S.U. as specified in the contract documents, so that it can be prepared for delivery. The person who picks up the cabinet needs to carefully inspect the cabinet for scratches and dents. Cabinets no longer get painted in the field, so care must be taken to protect the finish.



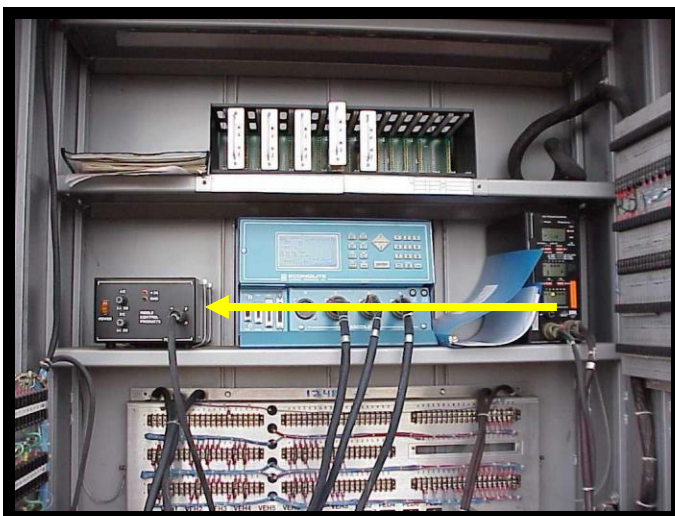
The Contractor must protect and return the cabinet pallet back to E.S.U. after cabinet installation.

The following electronic equipment is normally sent out with the cabinet:



- Several Loop Detector Amplifiers

- A Conflict Monitor Unit (CMU) in TS-1 Cabinets



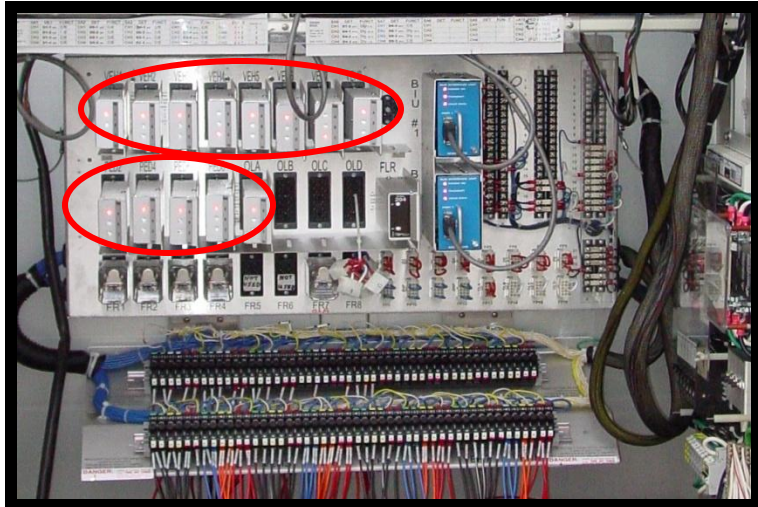
- A Detector Power Supply Unit in Type TS-1 Cabinets

- A Malfunction Management Unit (MMU) in Type TS-2 (Type 1) Cabinets



- A Cabinet Power Supply Unit in Type TS-2 (Type 1) Cabinets

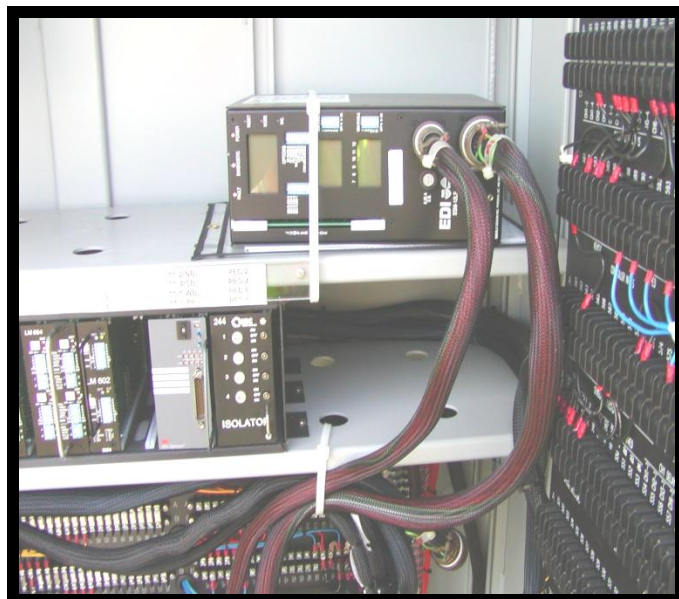
- Several Load Switches

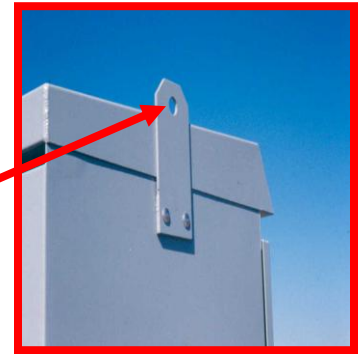


- A four Section Rubber Gasket, and four Anchor Bolts including nuts and washers.

The Contractor must sign a packing slip to verify that the cabinet and equipment was received in good condition from Mn/DOT Electrical Services Unit (ESU).

Make sure all electronic equipment (except controller unit) and connectors are secured with tape or tie wraps before any attempt is made to move and transport it. Controller unit must be removed from cabinet during transport.





Lifting holes are provided on the cabinet so that the cabinet can be loaded and unloaded and

transported in an upright position. These “lifting ears” must be turned down after cabinet installation.

The Contractor must use the proper methods and equipment so that the cabinet shell, internal equipment, and wiring is not damaged in any way.



The inspector must be notified when the cabinet is picked up and be present when it is unloaded so that he can check for any damage.



Before the cabinet is installed, make sure that all proper conduits are in place and the anchor bolts fit the cabinet. Refer to the contract documents for details. Clean any dirt and debris from the top of the foundation.

Lay the rubber gasket carefully in place and set the cabinet on top of the gasket, making sure the gasket is neatly positioned under the cabinet.

The cabinet must be securely bolted to the cast in-place anchor bolts.





If necessary, an enclosure may be erected to protect the inside of the cabinet from the elements while working on it. The door should be closed if unattended to prevent damage, vandalism, dirt, and debris or precipitation from entering the cabinet.

Any damage to the finish should be touched up with the appropriate materials and methods to prevent corrosion.

