

TEMPORARY TRAFFIC CONTROL DEVICES

Channelizing Devices

The function of channelizing devices is to delineate a desired vehicle path, mark specific hazards on or near the roadway, separate opposing traffic flows and partially or totally close the roadway. See the "Longitudinal Drop-off Guidelines" on pages 6K-xv thru 6K-xvii for the use of channelizing devices adjacent to shoulder edge drop-offs or uneven lanes.

Channelizing devices include cones, drums, barricades, temporary raised islands and various kinds of markers. The devices are broken into two type classifications based upon the nighttime visibility of the device. Their visibility is determined upon the total amount of reflective area of the device. Devices with less than 270 sq. in. are classified as Type A Channelizing devices and devices with more than 270 sq. in. of reflective area are Type B devices. Type A channelizing devices are typically used in attended TTC zones and Type B channelizing devices shall be used if the TTC zone will be left unattended overnight or longer than short term. Figure 6K-8 shows a breakdown of devices by Channelizer Type (drawn to approximate scale). See the MN MUTCD, Part 6F for additional details on application restrictions.

Flashing Warning Lights

Flashing warning lights shall supplement all road, ramp and sidewalk closure signing, and may be added to other warning signs and/or barricades to attract the road user's attention.

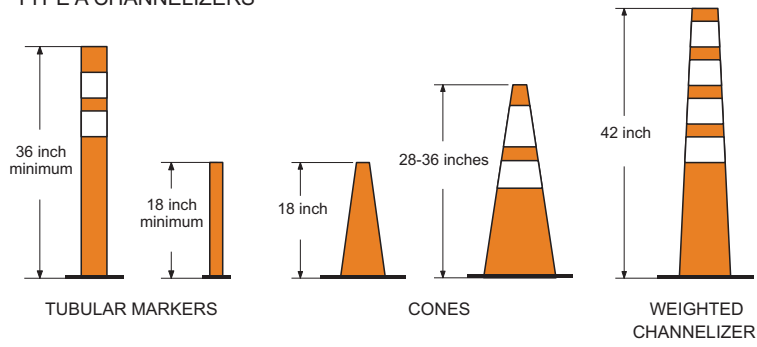
Vehicle Warning Lights

All vehicles within in a mobile TTC operation, working within 15 feet of a stationary TTC zone lane closure, or entering/exiting a stationary TTC zone shall have an approved operating vehicle warning light(s). The light(s) shall be used for both day and nighttime operations. The light(s) shall be operating and visible when a vehicle decelerates to enter a TTC zone and again when a vehicle leaves the TTC zone and enters the traveled traffic lane.

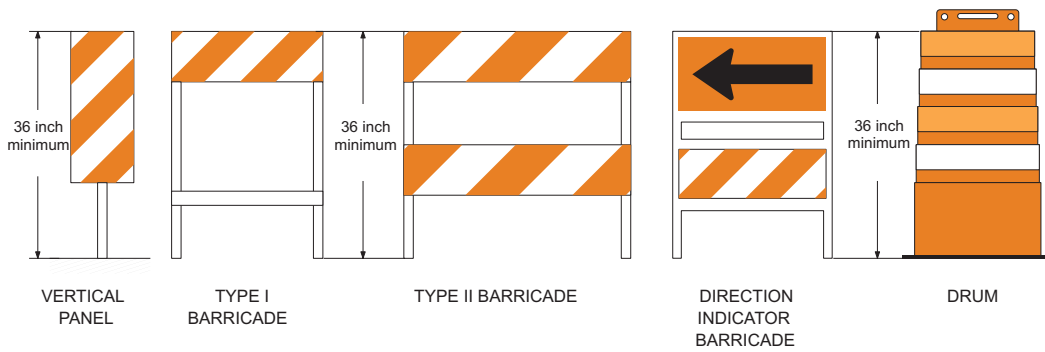
High Visibility Clothing

All clothing shall be in accordance with current Minnesota OSHA Rules and your agencies policies. When a vest is worn, it shall be visible at a distance of 1000 feet.

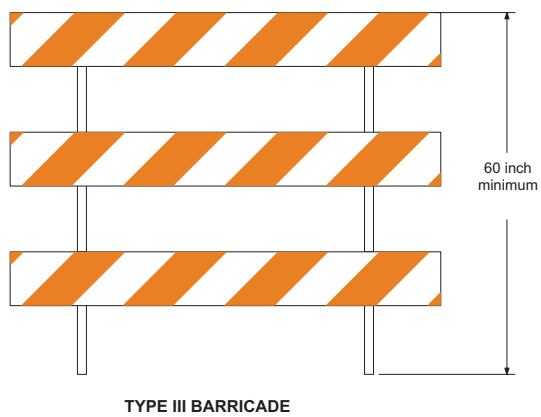
TYPE A CHANNELIZERS



TYPE B CHANNELIZERS



TYPE C CHANNELIZER



Channelizing Devices

Figure 6K-8

6K-xx