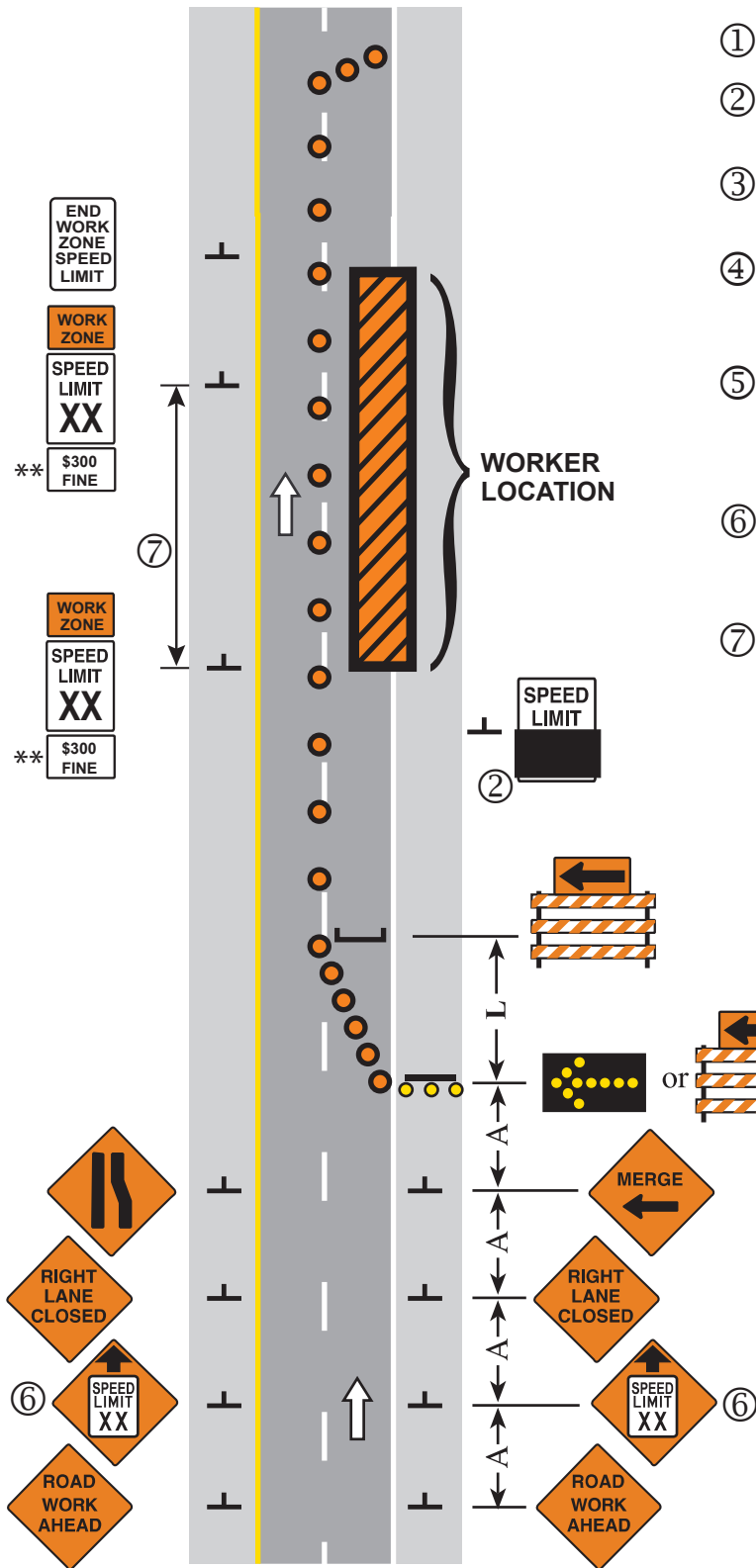


**NOTES:**

- ① Use the appropriate layout for temporary traffic control.
- ② All inplace Speed Limit signs shall be removed or covered when the Workers Present Speed Limit is implemented.
- ③ Workers Present Speed Limit assemblies shall be removed when workers are not present directly adjacent to traveled lanes.
- ④ Workers Present Speed Limit assemblies may be placed in the buffer or work space as long as the assemblies are not blocked by vehicles or devices.
- ⑤ As workers proceed through the work area, the assembly shall be no greater than 1 mile in advance of the work crew. For Workers Present Speed Limits of less than 40 mph, the assembly should be no greater than 1/2 mile in advance of the work crew.
- ⑥ The Reduced Speed Ahead sign should be used when the Workers Present Speed Limit is more than 10 mph below the inplace speed limit.
- ⑦ When workers are present adjacent to traveled lanes throughout the work area, confirming Workers Present Speed Limit assemblies may be placed according to the Spacing Table below:

Workers Present Speed Limit (mph)	Assembly Spacing (mile)
< 40	1/2
≥ 40	1

Sign	Posted Speed Limit Prior to Work Starting	
	≤ 40 mph	> 40 mph
END WORK ZONE SPEED LIMIT (R2-12)	24" X 36"	36" X 54"
WORK ZONE (G20-5aP)	24" X 18"	36" X 24"
SPEED LIMIT (R2-1)	24" X 30"	36" X 48"
\$300 FINE (R2-6bP)	24" X 18"	36" X 24"
REDUCED SPEED AHEAD (W3-5)	36" X 36"	48" X 48"



\*\* - Optional

● - Retroreflective channelizing device

