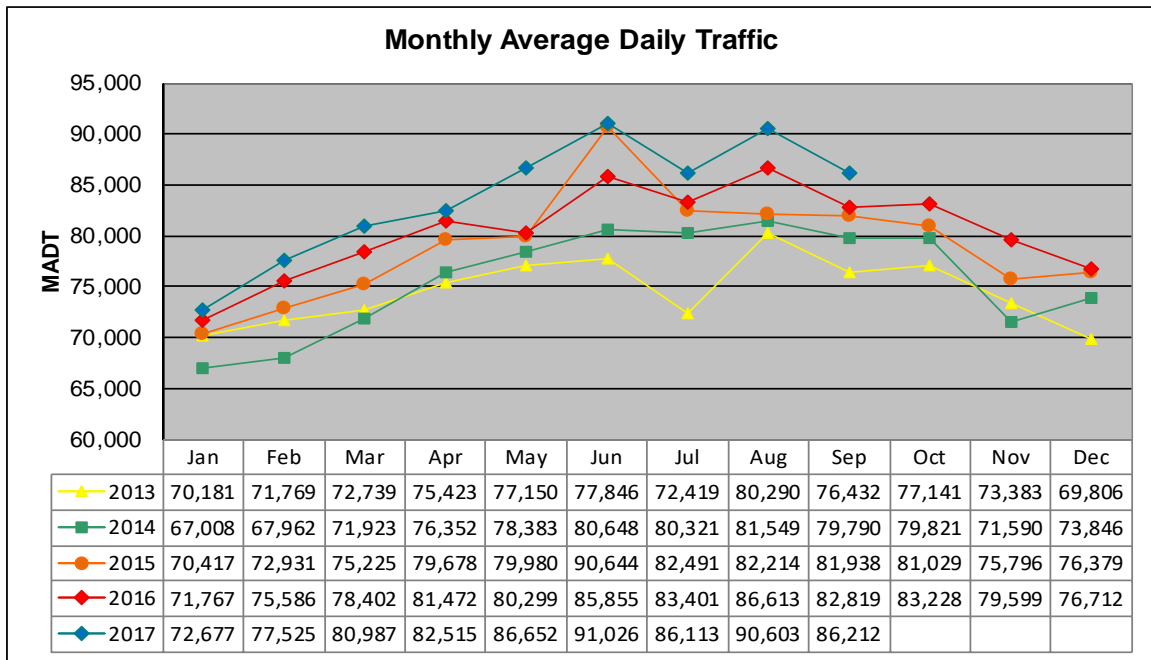


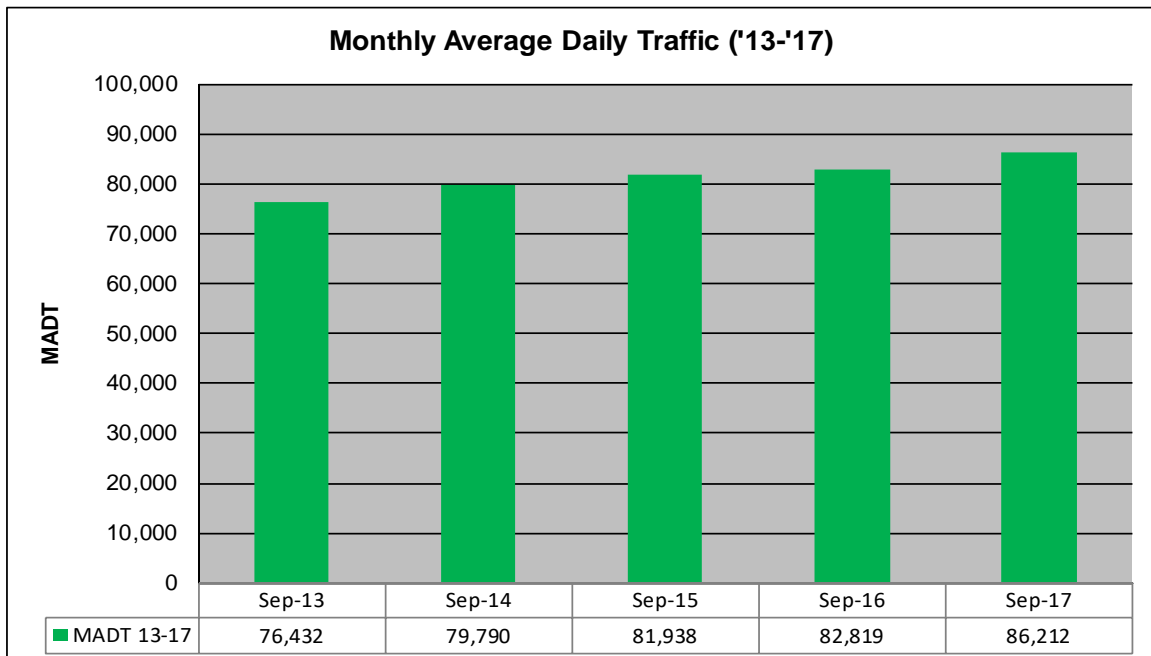
MONTHLY REPORT, STATION NO. 336 (ATR)

SEPTEMBER 2017

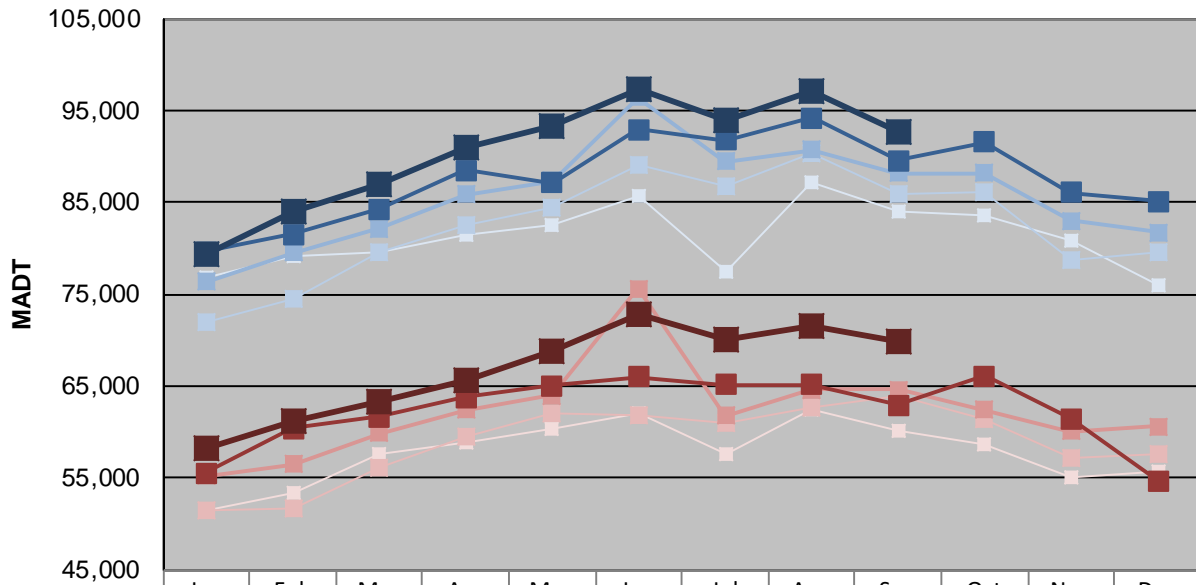
Station Measurement: VOLUME		
Route: I-35E	Route Direction: N/S	Lanes: 6
County: Dakota		Closest City: Eagan
Functional Class: Urban Principal Arterial - Interstate		
Location: N OF MSAS102 (DEERWOOD DR) IN EAGAN		
Ref Post: 095+00.422	True Mile: 95.48	Sequence No. 9854
Volume: 2,586,362		MADT: 86,212
Weekday (M-F) MADT: 69,824		Weekend (Sa-Su) MADT: 92,572



Note: Decrease in traffic June/July 2013 due to construction on I-35E... Increase in traffic June 2015 due to detour from MN 77



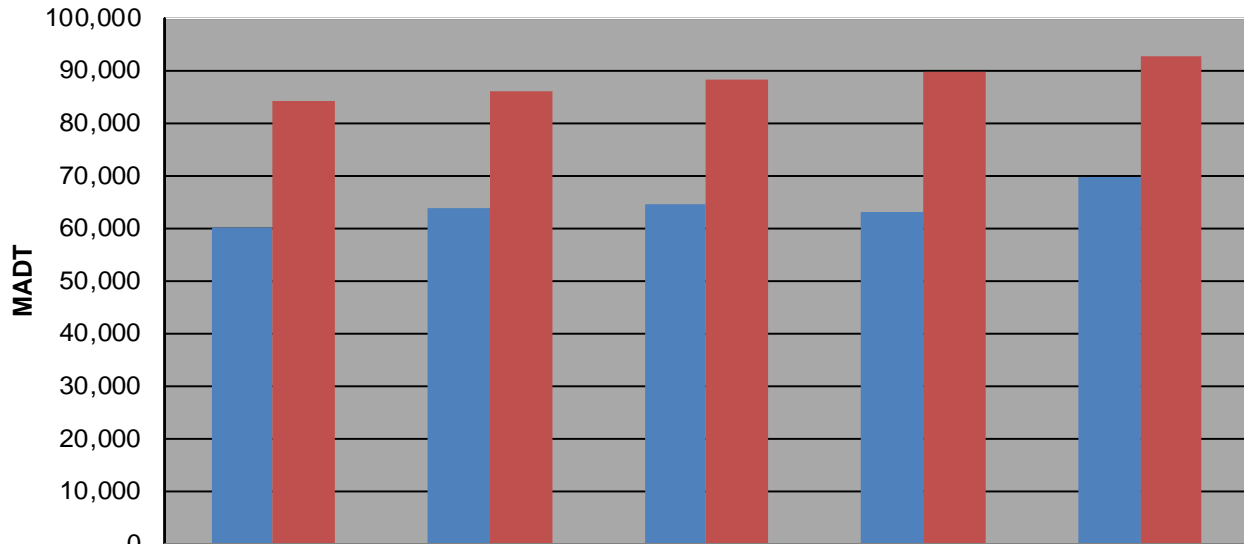
Weekday (WD)/Weekend (WE) Monthly Average Daily Traffic



	Jan	Feb	Mar	Apr	May	Jun	Jul	Aug	Sep	Oct	Nov	Dec
'13 WD	76,776	79,098	79,624	81,418	82,600	85,692	77,412	87,246	84,058	83,556	80,846	76,074
'13 WE	51,538	53,446	57,634	58,958	60,290	62,154	57,608	62,412	60,166	58,710	55,146	55,652
'14 WD	72,026	74,480	79,634	82,506	84,428	89,130	86,714	90,340	85,944	86,024	78,768	79,486
'14 WE	51,572	51,670	56,130	59,578	61,984	61,874	61,030	62,772	63,922	61,356	57,234	57,578
'15 WD	76,344	79,494	82,148	85,896	87,284	96,400	89,486	90,760	88,172	88,152	83,028	81,786
'15 WE	55,232	56,522	59,934	62,454	64,036	75,662	61,752	64,604	64,612	62,438	60,116	60,608
'16 WD	79,584	81,526	84,284	88,534	87,162	92,956	91,812	94,226	89,582	91,582	86,038	85,104
'16 WE	55,538	60,382	61,658	63,772	65,018	66,034	65,190	65,130	62,942	66,148	61,476	54,746
'17 WD	79,432	84,040	86,928	90,974	93,308	97,406	93,972	97,158	92,572			
'17 WE	58,320	61,240	63,248	65,598	68,782	72,782	70,080	71,642	69,824			

Note: 'Weekday' defined as Monday-Friday, 'Weekend' defined as Saturday-Sunday

Weekday/Weekend Monthly Average Daily Traffic ('13-'17)



	Sep-13	Sep-14	Sep-15	Sep-16	Sep-17
Weekday	60,166	63,922	64,612	62,942	69,824
Weekend	84,058	85,944	88,172	89,582	92,572