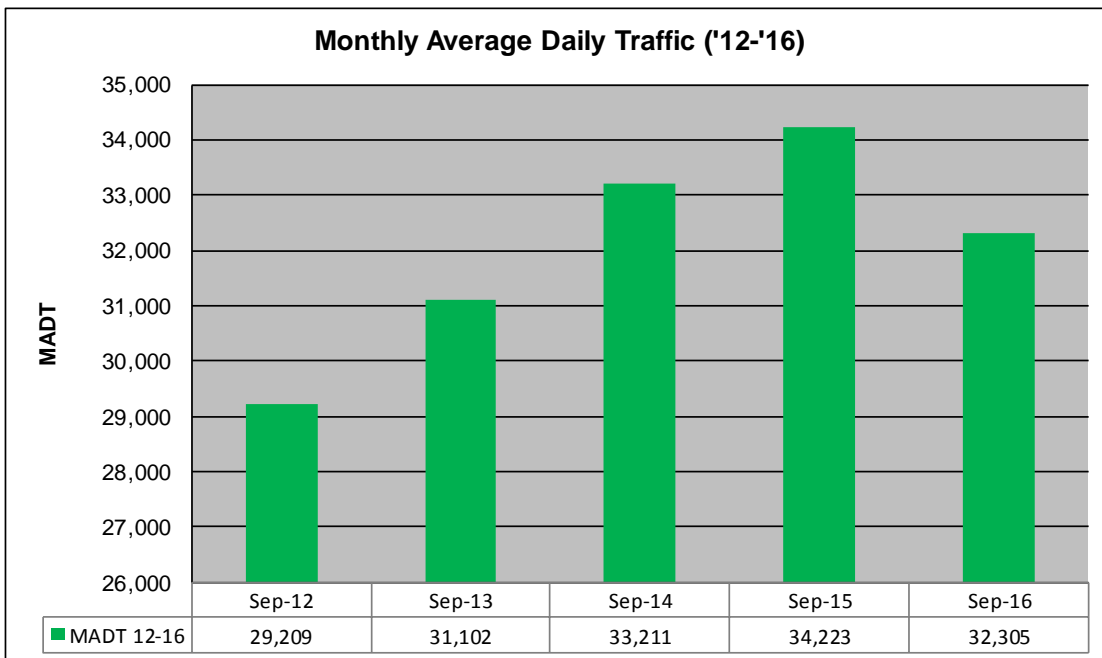
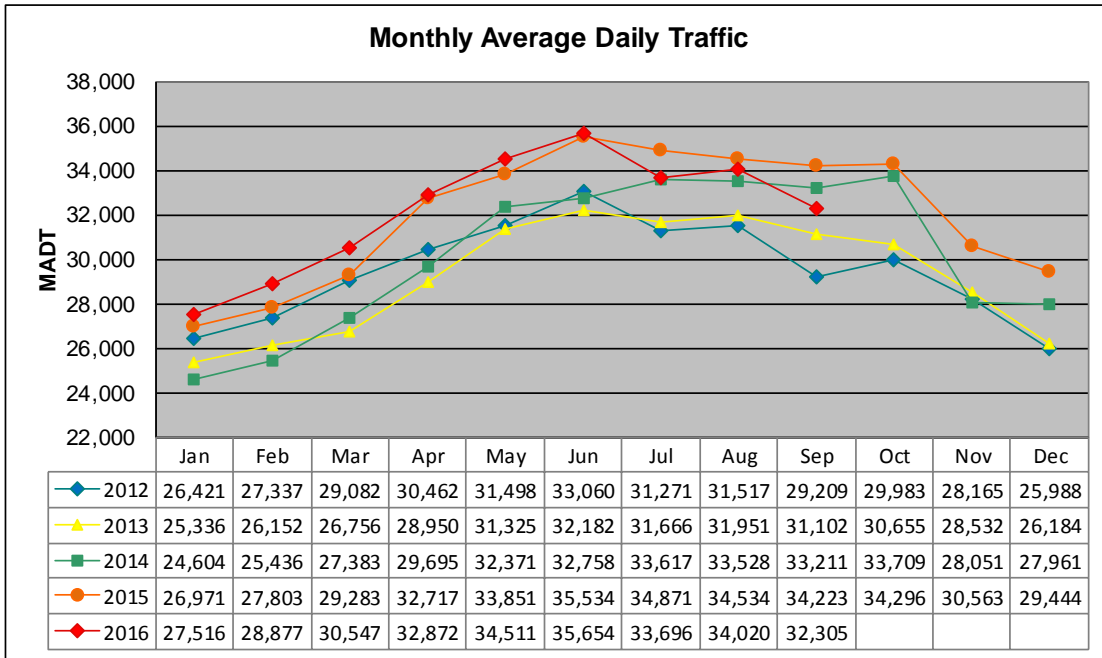


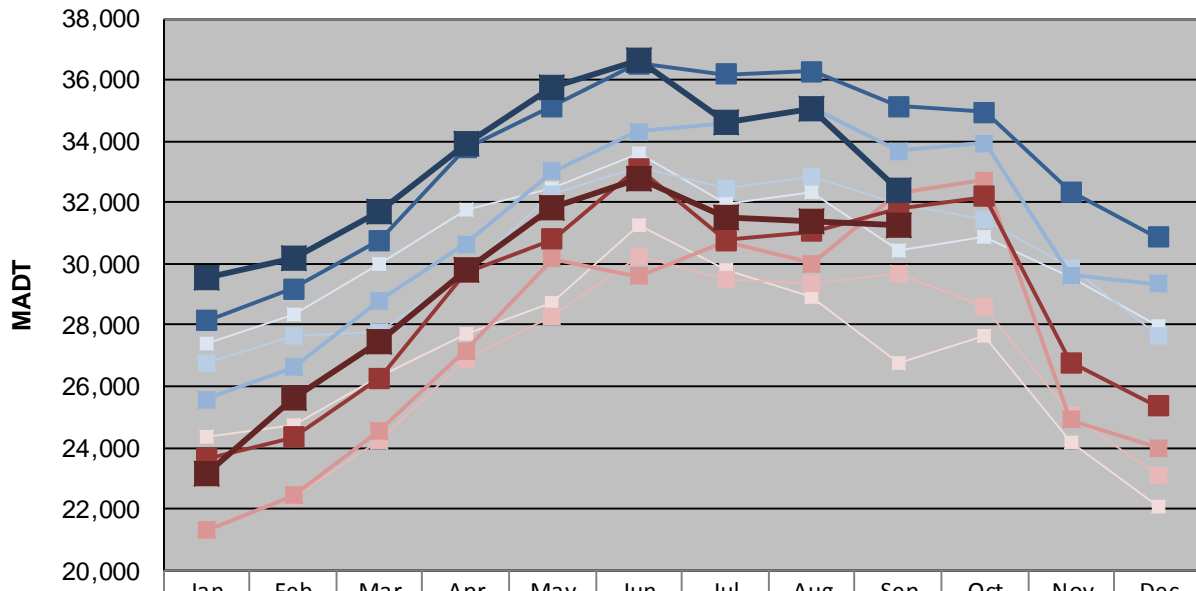
MONTHLY REPORT, STATION NO. 42 (WIM)

SEPTEMBER 2016

| | | |
|--|----------------------|-------------------------------------|
| Station Measurement: VOLUME/SPEED/CLASS/WEIGHT | | |
| Route: TH 61 | Route Direction: N/S | Lanes: 4 |
| County: Washington | | Closest City: Cottage Grove |
| Functional Class: Rural Principal Arterial - Other | | |
| Location: 0.4 MI S OF TH95 (MANNING AVE S), S OF COTTAGE GROVE | | |
| Ref Post: 119+00.644 | True Mile: 119.337 | Sequence No. 11128 |
| Volume: 969,136 | | MADT: 32,305 |
| Weekday (M-F) MADT: 32,402 | | Weekend (Sa-Su) MADT: 31,278 |



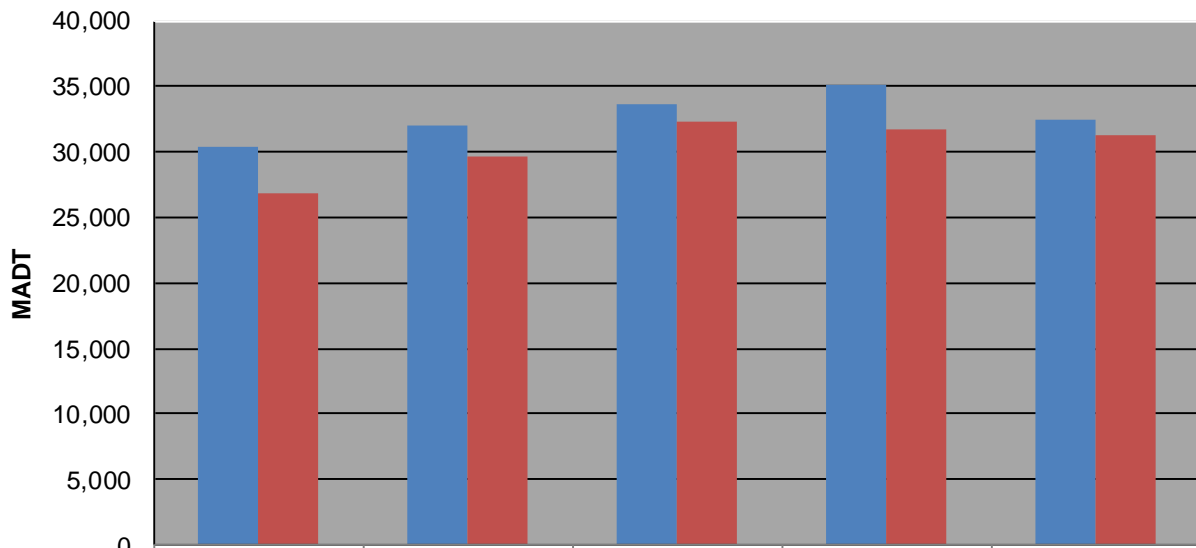
Weekday (WD)/Weekend (WE) Monthly Average Daily Traffic



| | Jan | Feb | Mar | Apr | May | Jun | Jul | Aug | Sep | Oct | Nov | Dec |
|--------|--------|--------|--------|--------|--------|--------|--------|--------|--------|--------|--------|--------|
| '12 WD | 27,394 | 28,376 | 29,968 | 31,786 | 32,470 | 33,620 | 31,988 | 32,322 | 30,422 | 30,890 | 29,550 | 27,954 |
| '12 WE | 24,370 | 24,760 | 26,344 | 27,718 | 28,752 | 31,246 | 29,822 | 28,938 | 26,784 | 27,678 | 24,182 | 22,094 |
| '13 WD | 26,782 | 27,656 | 27,798 | 29,724 | 32,268 | 33,146 | 32,438 | 32,816 | 31,954 | 31,450 | 29,850 | 27,648 |
| '13 WE | 21,328 | 22,392 | 24,252 | 26,900 | 28,270 | 30,254 | 29,500 | 29,368 | 29,684 | 28,576 | 25,076 | 23,116 |
| '14 WD | 25,582 | 26,636 | 28,816 | 30,648 | 33,028 | 34,312 | 34,554 | 35,102 | 33,682 | 33,924 | 29,622 | 29,342 |
| '14 WE | 21,302 | 22,436 | 24,556 | 27,152 | 30,180 | 29,582 | 30,698 | 30,004 | 32,300 | 32,724 | 24,908 | 23,978 |
| '15 WD | 28,138 | 29,190 | 30,766 | 33,784 | 35,150 | 36,520 | 36,184 | 36,266 | 35,152 | 34,950 | 32,342 | 30,880 |
| '15 WE | 23,658 | 24,338 | 26,258 | 29,732 | 30,800 | 33,102 | 30,770 | 31,058 | 31,798 | 32,196 | 26,794 | 25,342 |
| '16 WD | 29,558 | 30,162 | 31,686 | 33,948 | 35,778 | 36,672 | 34,594 | 35,038 | 32,402 | | | |
| '16 WE | 23,182 | 25,602 | 27,472 | 29,782 | 31,858 | 32,774 | 31,504 | 31,418 | 31,278 | | | |

Note: 'Weekday' defined as Monday-Friday, 'Weekend' defined as Saturday-Sunday

Weekday/Weekend Monthly Average Daily Traffic ('12-'16)



| | Sep-12 | Sep-13 | Sep-14 | Sep-15 | Sep-16 |
|---------|--------|--------|--------|--------|--------|
| Weekday | 30,422 | 31,954 | 33,682 | 35,152 | 32,402 |
| Weekend | 26,784 | 29,684 | 32,300 | 31,798 | 31,278 |