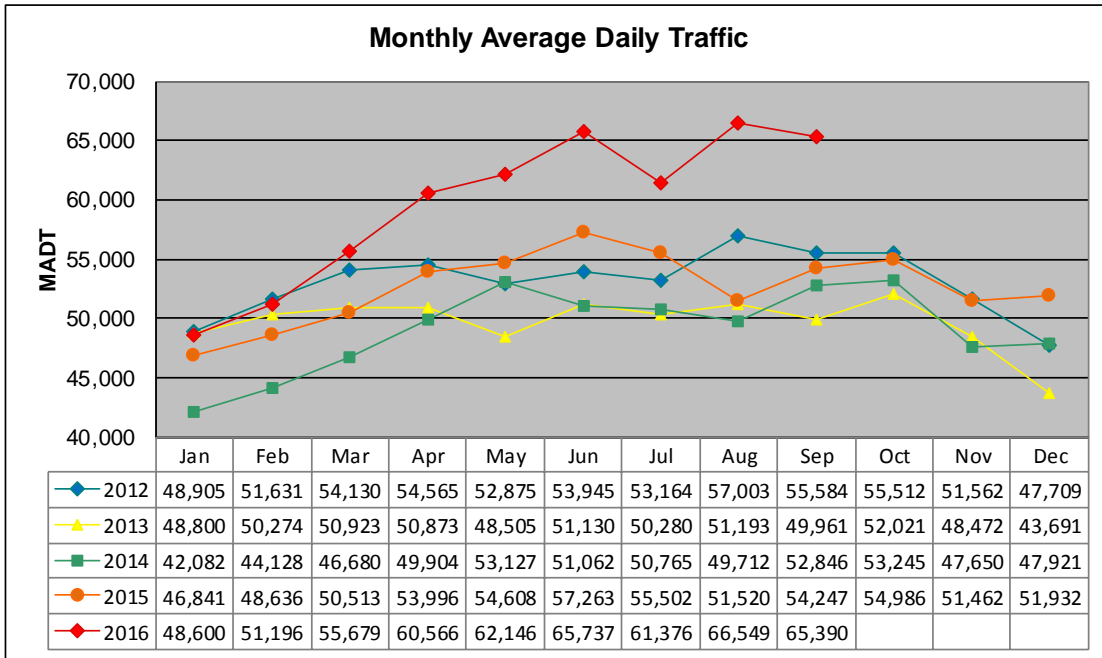


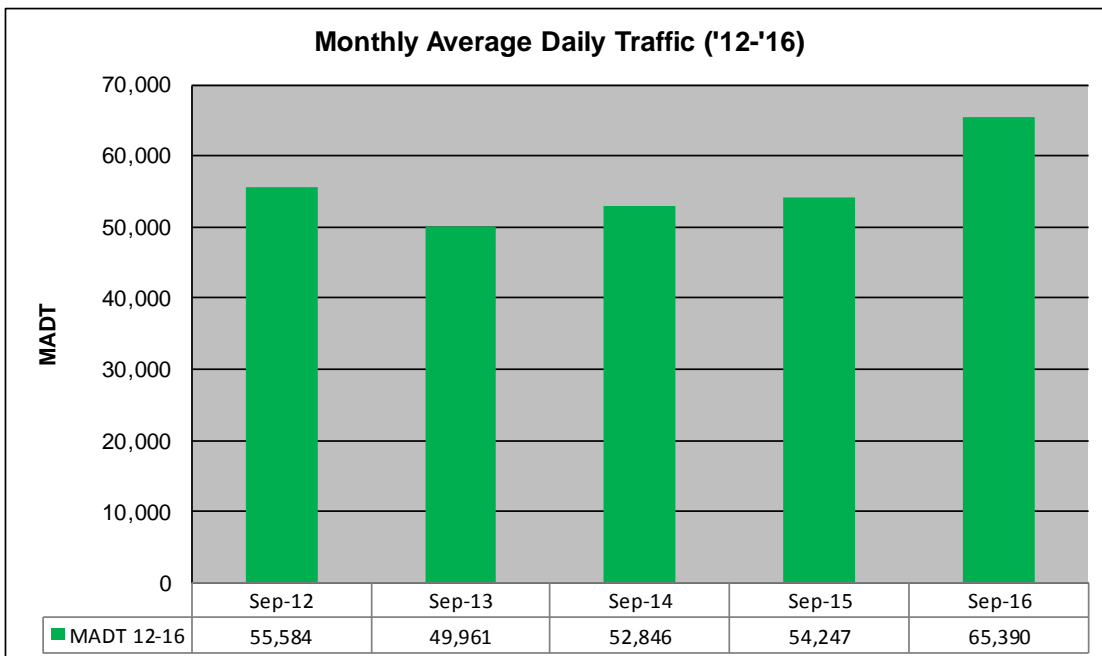
# MONTHLY REPORT, STATION NO. 40 (WIM)

## SEPTEMBER 2016

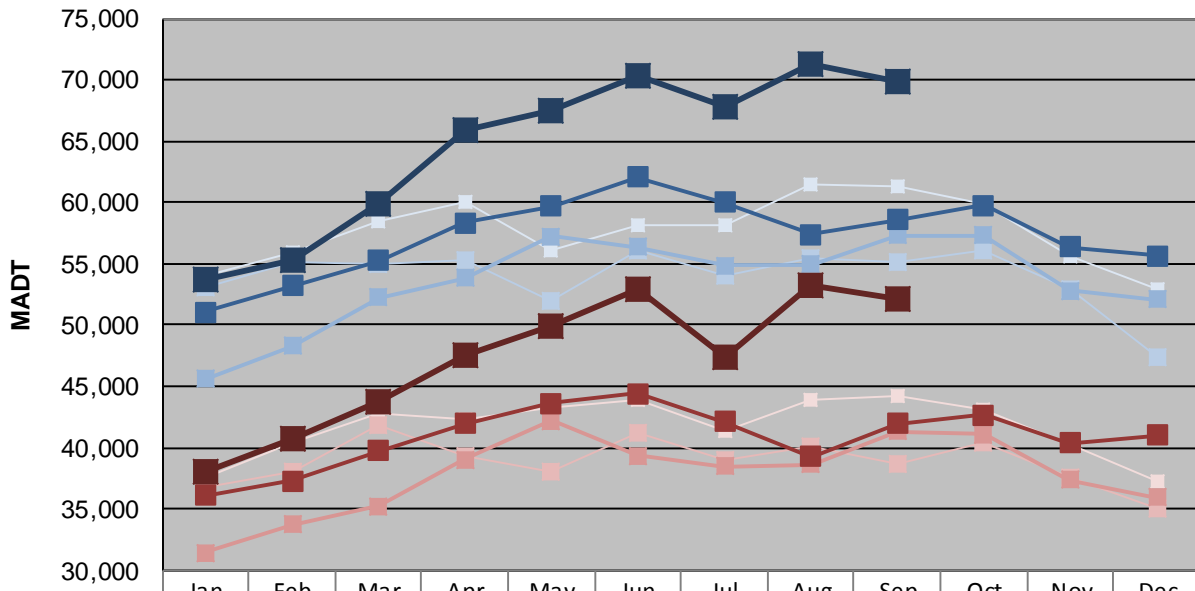
|  |                      |                                     |
|--|----------------------|-------------------------------------|
| Station Measurement: VOLUME/SPEED/CLASS/WEIGHT                             |                      |                                     |
| Route: TH 52   | Route Direction: N/S | Lanes: 4                            |
| County: Dakota   |                      | Closest City: West St Paul          |
| Functional Class: Urban Principal Arterial - Other Freeways or Expressways |                      |                                     |
| Location: .5 MI N OF CSAH14 (SOUTHVIEW BLVD) IN W ST PAUL                  |                      |                                     |
| Ref Post: 126+00.677   | True Mile: 127.015   | Sequence No. 11537                  |
| <b>Volume: 1,961,709</b>   |                      | <b>MADT: 65,390</b>                 |
| <b>Weekday (M-F) MADT: 69,888</b>  |                      | <b>Weekend (Sa-Su) MADT: 52,168</b> |



Note: Increase in traffic beginning in April 2016 due to the completion of the Lafayette Bridge project (2011-2015)



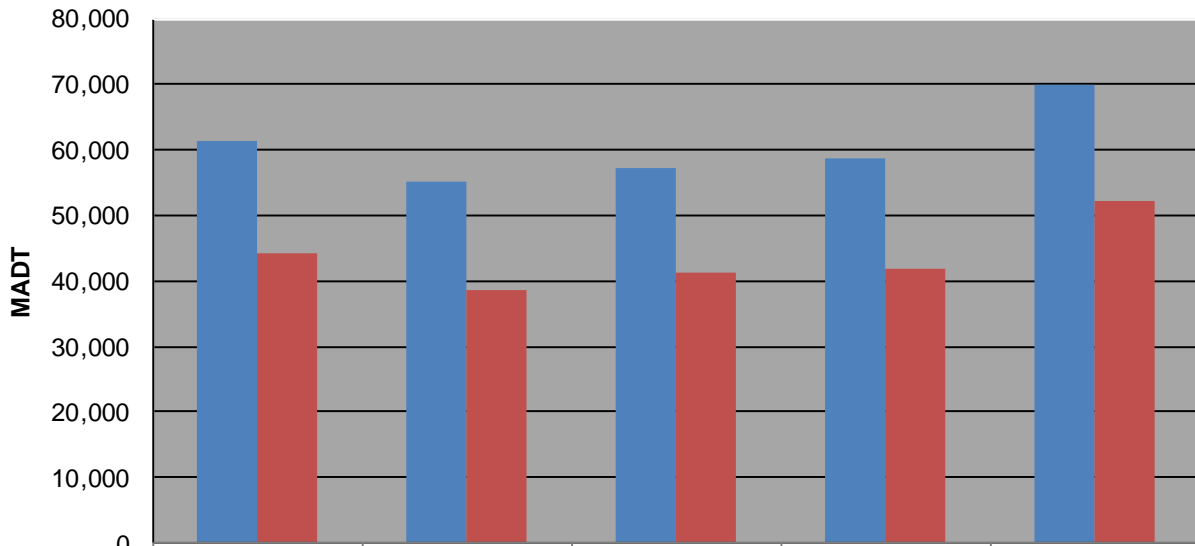
### Weekday (WD)/Weekend (WE) Monthly Average Daily Traffic



|        | Jan    | Feb    | Mar    | Apr    | May    | Jun    | Jul    | Aug    | Sep    | Oct    | Nov    | Dec    |
|--------|--------|--------|--------|--------|--------|--------|--------|--------|--------|--------|--------|--------|
| '12 WD | 53,960 | 55,954 | 58,452 | 60,020 | 56,150 | 58,072 | 58,194 | 61,432 | 61,244 | 59,904 | 55,686 | 52,898 |
| '12 WE | 37,616 | 40,422 | 42,728 | 42,346 | 43,200 | 43,830 | 41,416 | 43,938 | 44,264 | 43,172 | 40,210 | 37,250 |
| '13 WD | 53,038 | 55,136 | 55,024 | 55,224 | 51,922 | 56,058 | 54,092 | 55,490 | 55,102 | 56,064 | 52,958 | 47,412 |
| '13 WE | 36,768 | 38,118 | 41,850 | 39,254 | 38,080 | 41,270 | 38,920 | 40,112 | 38,748 | 40,362 | 37,526 | 35,088 |
| '14 WD | 45,576 | 48,298 | 52,216 | 53,836 | 57,260 | 56,342 | 54,852 | 54,944 | 57,300 | 57,324 | 52,784 | 52,062 |
| '14 WE | 31,400 | 33,706 | 35,242 | 39,026 | 42,190 | 39,368 | 38,484 | 38,654 | 41,304 | 41,086 | 37,382 | 35,980 |
| '15 WD | 51,080 | 53,176 | 55,280 | 58,334 | 59,668 | 62,048 | 60,024 | 57,418 | 58,620 | 59,742 | 56,372 | 55,690 |
| '15 WE | 36,142 | 37,288 | 39,764 | 41,938 | 43,602 | 44,436 | 42,152 | 39,302 | 41,942 | 42,686 | 40,392 | 41,006 |
| '16 WD | 53,642 | 55,300 | 59,820 | 65,864 | 67,552 | 70,324 | 67,858 | 71,262 | 69,888 |        |        |        |
| '16 WE | 38,078 | 40,726 | 43,752 | 47,496 | 49,960 | 52,938 | 47,442 | 53,308 | 52,168 |        |        |        |

Note: 'Weekday' defined as Monday-Friday, 'Weekend' defined as Saturday-Sunday

### Weekday/Weekend Monthly Average Daily Traffic ('12-'16)



|         | Sep-12 | Sep-13 | Sep-14 | Sep-15 | Sep-16 |
|---------|--------|--------|--------|--------|--------|
| Weekday | 61,244 | 55,102 | 57,300 | 58,620 | 69,888 |
| Weekend | 44,264 | 38,748 | 41,304 | 41,942 | 52,168 |