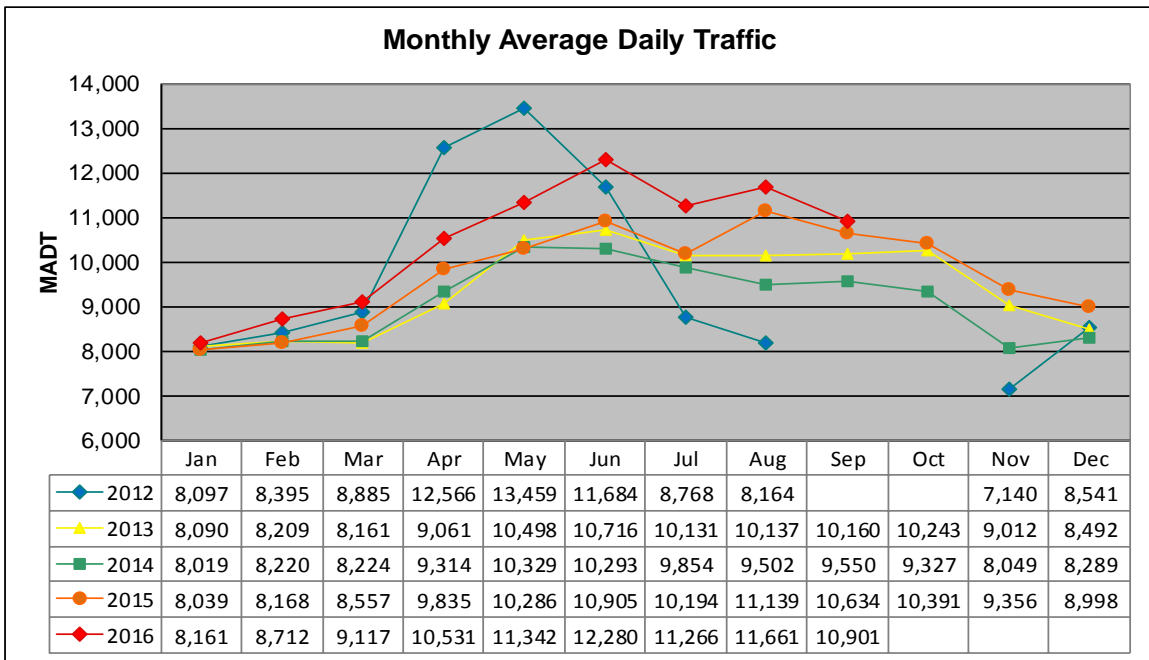


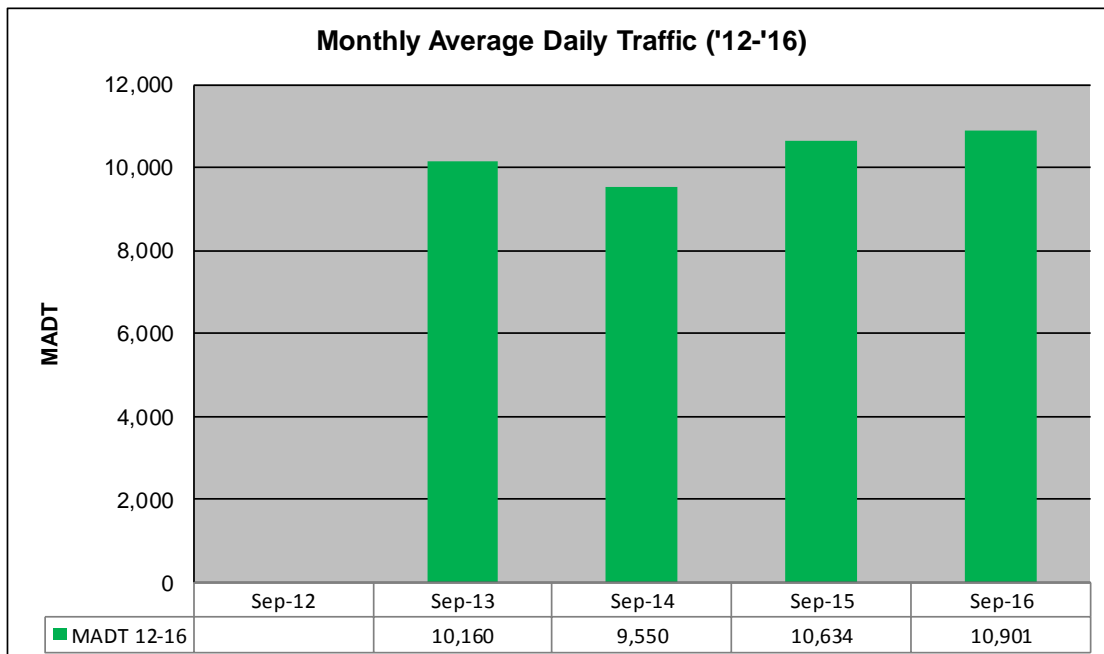
MONTHLY REPORT, STATION NO. 390 (ATR)

SEPTEMBER 2016

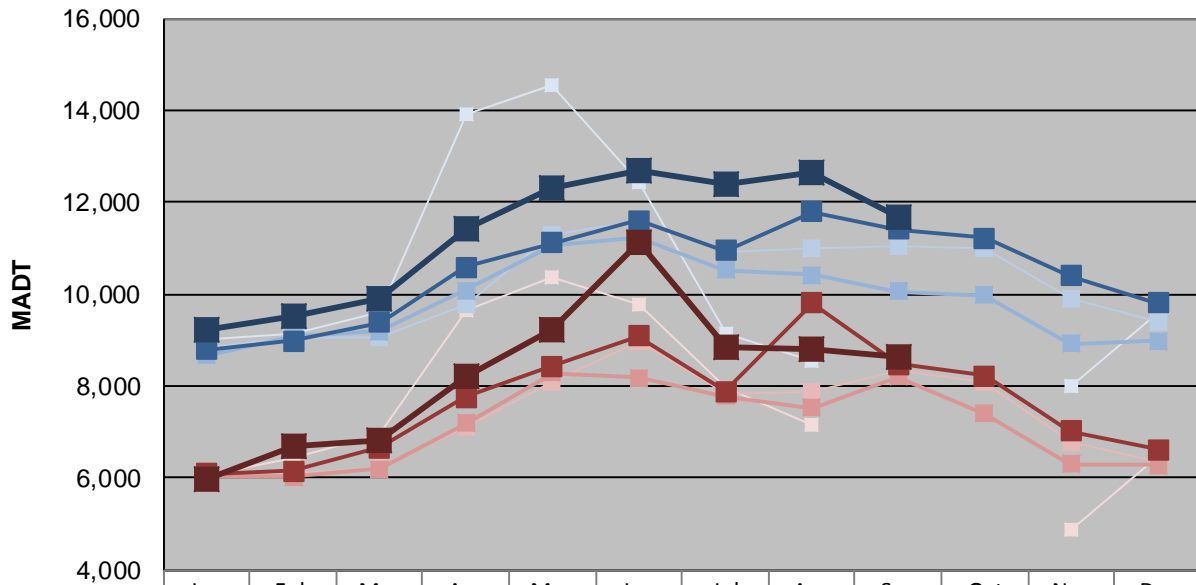
Station Measurement: VOLUME/SPEED/CLASS		
Route: TH 61	Route Direction: N/S	Lanes: 2
County: Washington		Closest City: Hugo
Functional Class: Urban Minor Arterial		
Location: .9 MI N OF CSAH8 IN HUGO		
Ref Post: 153+00.300	True Mile: 153.097	Sequence No. 9878
Volume: 327,026		MADT: 10,901
Weekday (M-F) MADT: 11,676		Weekend (Sa-Su) MADT: 8,632



Note: Increase in traffic Apr/May 2012, and Aug 2015 due to detour from I-35E... Decrease in traffic Jul/Aug/Nov 2012 due to construction on TH 61... No data Sep/Oct 2012 due to sensors destroyed by construction



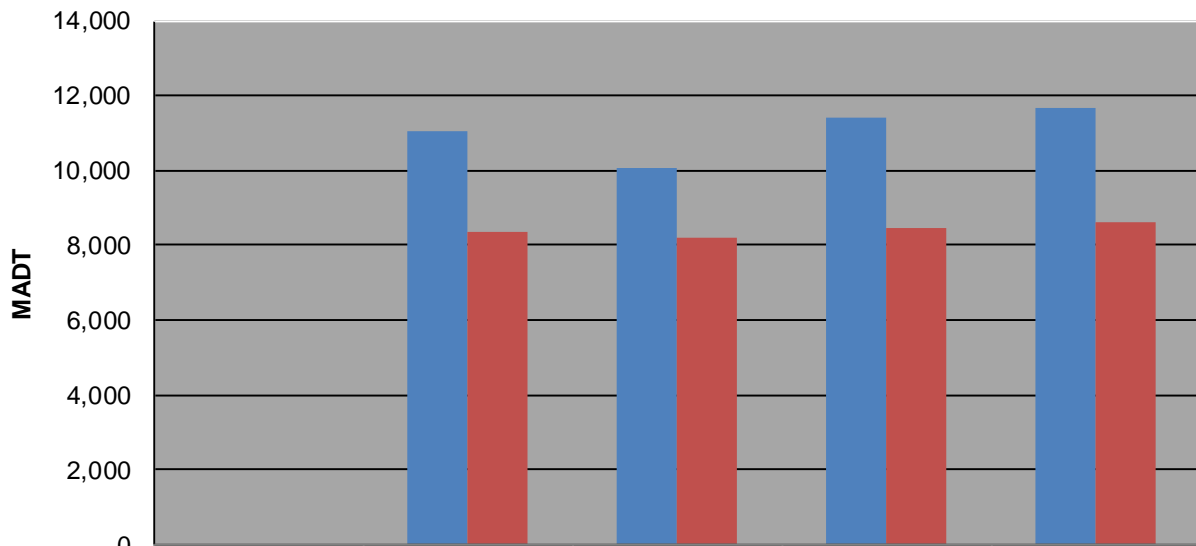
Weekday (WD)/Weekend (WE) Monthly Average Daily Traffic



	Jan	Feb	Mar	Apr	May	Jun	Jul	Aug	Sep	Oct	Nov	Dec
'12 WD	9,008	9,152	9,620	13,896	14,530	12,422	9,134	8,548			8,008	9,590
'12 WE	6,060	6,436	6,930	9,662	10,360	9,776	7,962	7,172			4,882	6,466
'13 WD	8,826	9,056	9,042	9,770	11,304	11,582	10,898	11,008	11,030	11,004	9,914	9,414
'13 WE	6,016	6,090	6,250	7,100	8,068	8,982	7,854	7,862	8,336	8,092	6,794	6,364
'14 WD	8,660	9,098	9,196	10,088	11,074	11,252	10,530	10,418	10,070	9,984	8,918	8,980
'14 WE	6,032	6,022	6,208	7,196	8,298	8,190	7,786	7,538	8,212	7,396	6,312	6,278
'15 WD	8,784	8,976	9,392	10,582	11,118	11,602	10,952	11,800	11,422	11,228	10,398	9,810
'15 WE	6,102	6,150	6,664	7,760	8,438	9,082	7,878	9,810	8,478	8,224	7,014	6,624
'16 WD	9,214	9,506	9,918	11,432	12,296	12,696	12,386	12,664	11,676			
'16 WE	5,980	6,674	6,822	8,222	9,210	11,124	8,834	8,812	8,632			

Note: 'Weekday' defined as Monday-Friday, 'Weekend' defined as Saturday-Sunday

Weekday/Weekend Monthly Average Daily Traffic ('12-'16)



	Sep-12	Sep-13	Sep-14	Sep-15	Sep-16
Weekday		11,030	10,070	11,422	11,676
Weekend		8,336	8,212	8,478	8,632