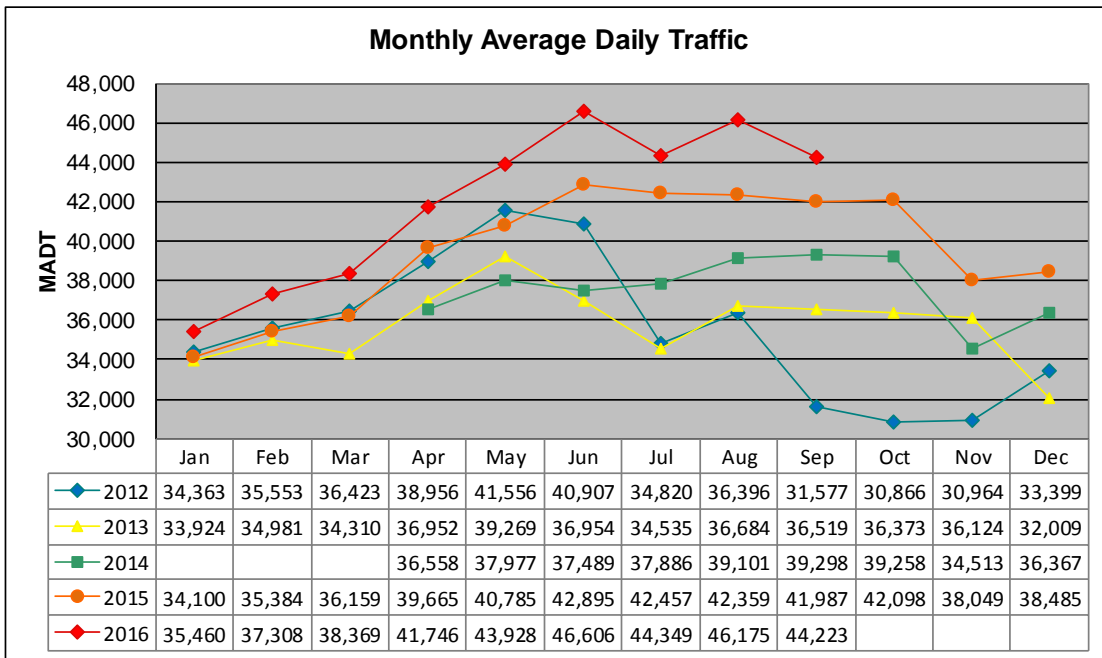


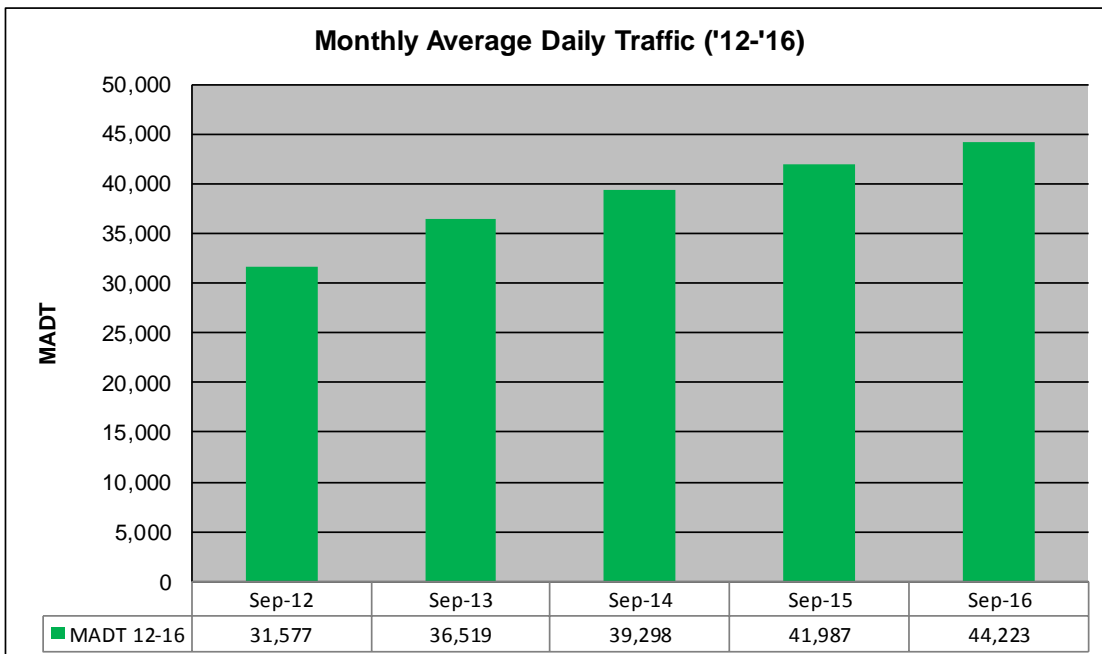
# MONTHLY REPORT, STATION NO. 36 (WIM)

## SEPTEMBER 2016

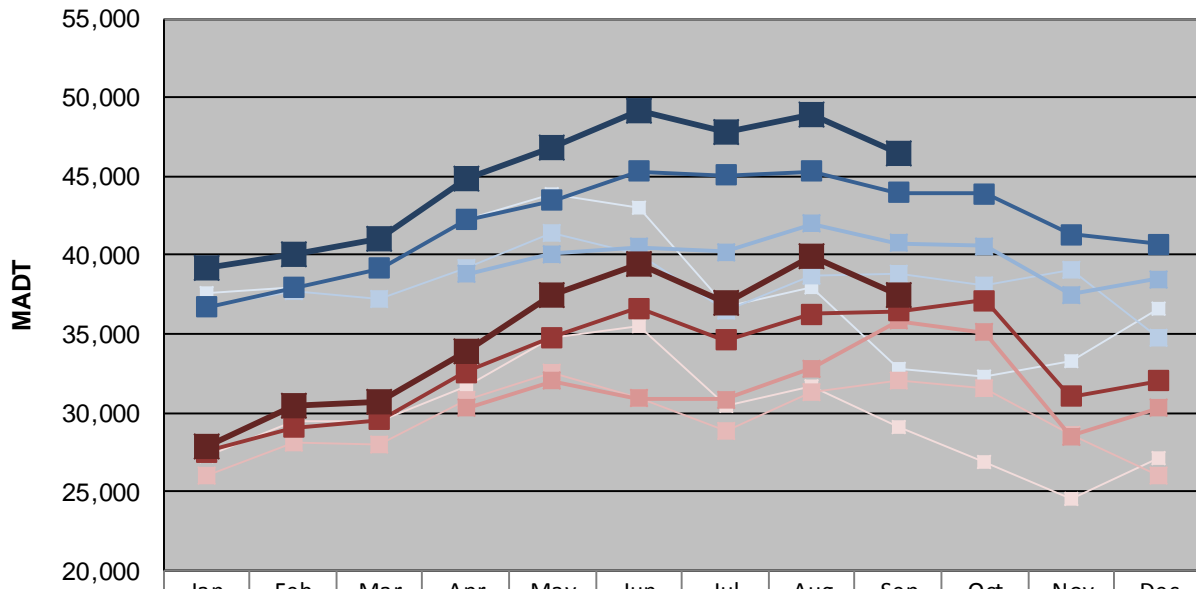
Station Measurement: VOLUME/SPEED/CLASS/WEIGHT		
Route: TH 36	Route Direction: E/W	Lanes: 4
County: Washington		Closest City: Lake Elmo
Functional Class: Urban Other Principal Arterial		
Location: .7 MI W OF CSAH17 (LAKE ELMO AVE N) IN LAKE ELMO		
Ref Post: 014+00.983	True Mile: 15.022	Sequence No. 10237
<b>Volume: 1,326,685</b>		<b>MADT: 44,223</b>
<b>Weekday (M-F) MADT: 46,444</b>		<b>Weekend (Sa-Su) MADT: 37,492</b>



Note: Decrease in traffic July to November 2012 and June to October 2013 due to construction on TH 36... Increase in traffic June/July 2015 due to detours... No data January to March 2014 due to site communication issues



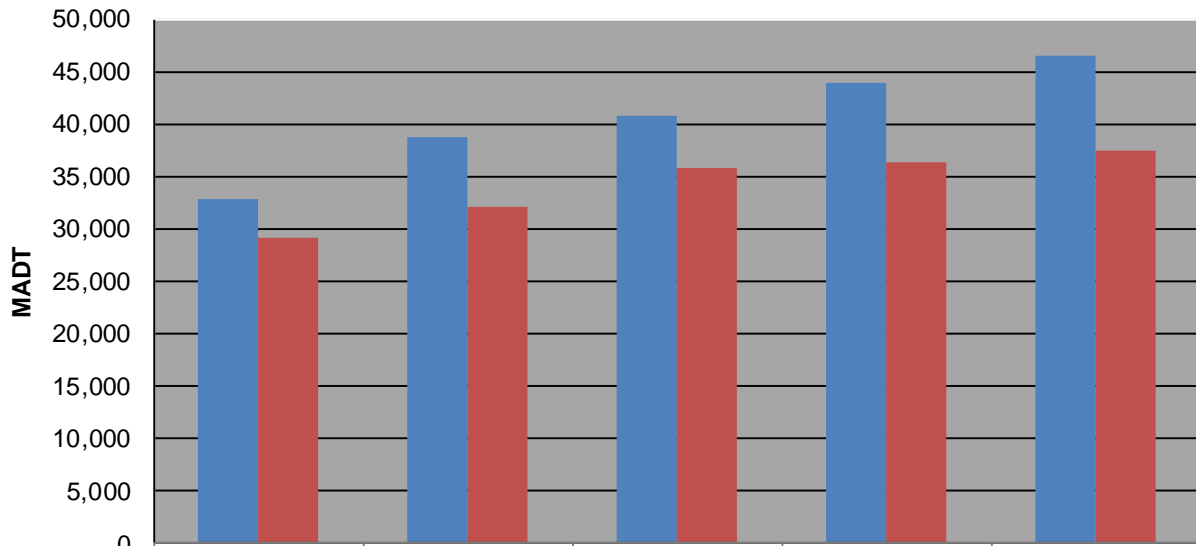
### Weekday (WD)/Weekend (WE) Monthly Average Daily Traffic



	Jan	Feb	Mar	Apr	May	Jun	Jul	Aug	Sep	Oct	Nov	Dec
'12 WD	37,628	37,912	39,018	42,298	43,856	43,042	36,742	37,956	32,800	32,330	33,298	36,576
'12 WE	27,234	29,510	29,464	31,718	34,812	35,436	30,384	31,700	29,130	26,834	24,532	27,104
'13 WD	36,708	37,754	37,242	39,212	41,436	39,990	36,500	38,638	38,780	38,044	39,094	34,722
'13 WE	25,992	28,050	27,924	30,754	32,510	30,882	28,790	31,332	32,020	31,522	28,646	26,068
'14 WD				38,810	40,104	40,524	40,210	42,016	40,748	40,584	37,514	38,488
'14 WE				30,304	32,034	30,912	30,830	32,790	35,832	35,116	28,512	30,264
'15 WD	36,672	37,914	39,140	42,232	43,490	45,292	45,064	45,336	43,966	43,926	41,320	40,712
'15 WE	27,510	29,060	29,552	32,540	34,790	36,610	34,628	36,274	36,420	37,098	31,028	32,026
'16 WD	39,138	39,988	41,042	44,844	46,878	49,160	47,784	48,922	46,444			
'16 WE	27,818	30,486	30,652	33,854	37,432	39,452	36,914	39,962	37,492			

Note: 'Weekday' defined as Monday-Friday, 'Weekend' defined as Saturday-Sunday

### Weekday/Weekend Monthly Average Daily Traffic ('12-'16)



	Sep-12	Sep-13	Sep-14	Sep-15	Sep-16
Weekday	32,800	38,780	40,748	43,966	46,444
Weekend	29,130	32,020	35,832	36,420	37,492