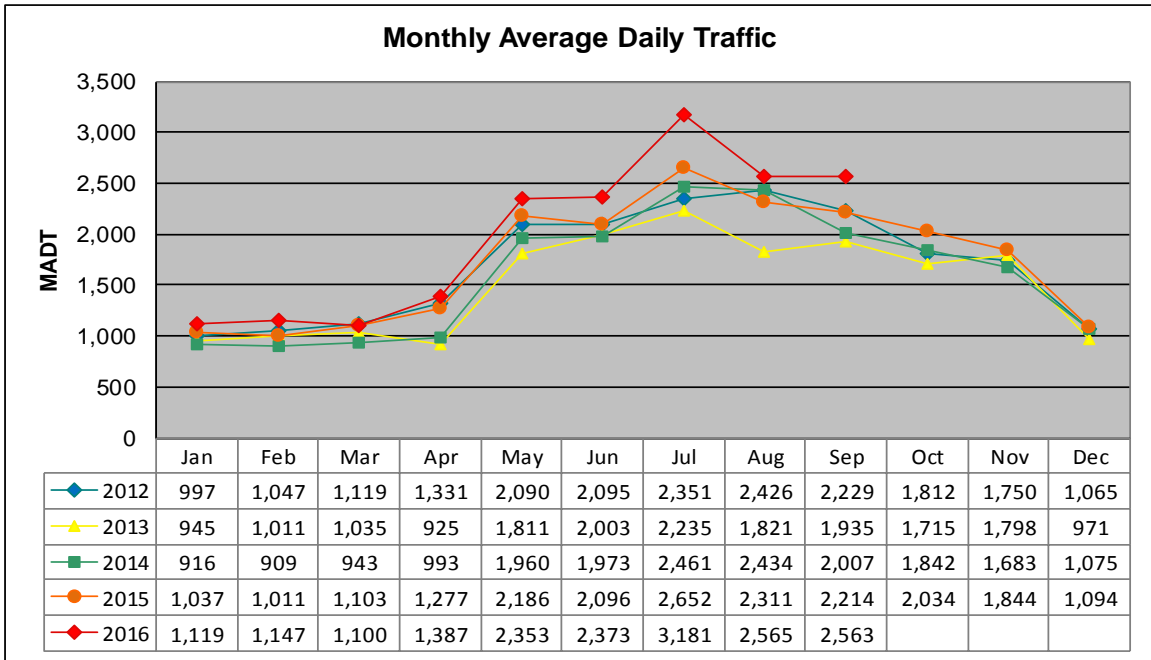


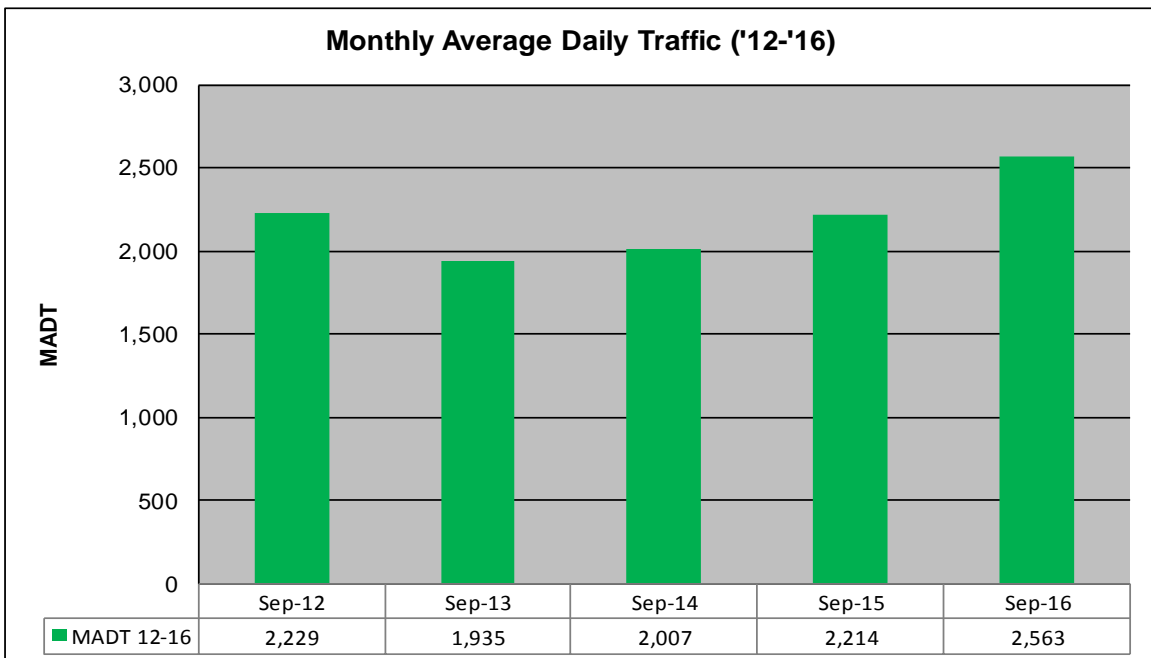
# MONTHLY REPORT, STATION NO. 222 (ATR)

## SEPTEMBER 2016

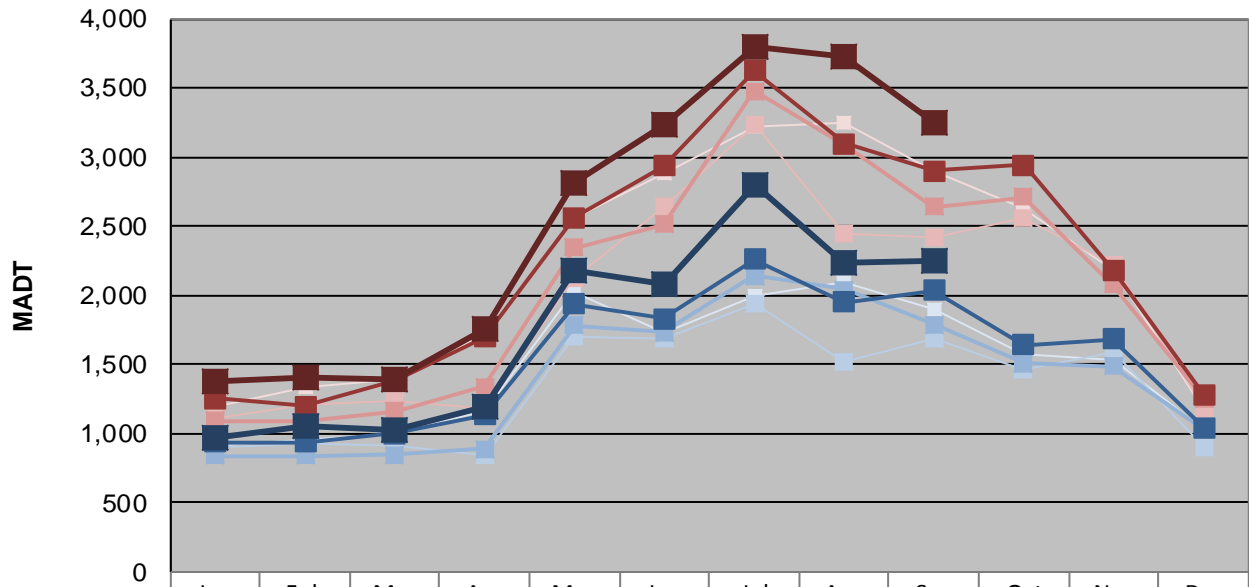
Station Measurement: VOLUME/SPEED		
Route: TH 65	Route Direction: N/S	Lanes: 2
County: Aitkin	Closest City: McGrath	
Functional Class: Rural Minor Arterial		
Location: .6 MI N OF CSAH2, N OF MCGRATH		
Ref Post: 097+00.725	True Mile: 100.432	Sequence No. 6767
<b>Volume: 76,894</b>		<b>MADT: 2,563</b>
<b>Weekday (M-F) MADT: 2,250</b>		<b>Weekend (Sa-Su) MADT: 3,244</b>



Note: Decrease in traffic August 2013 due to construction on TH 65



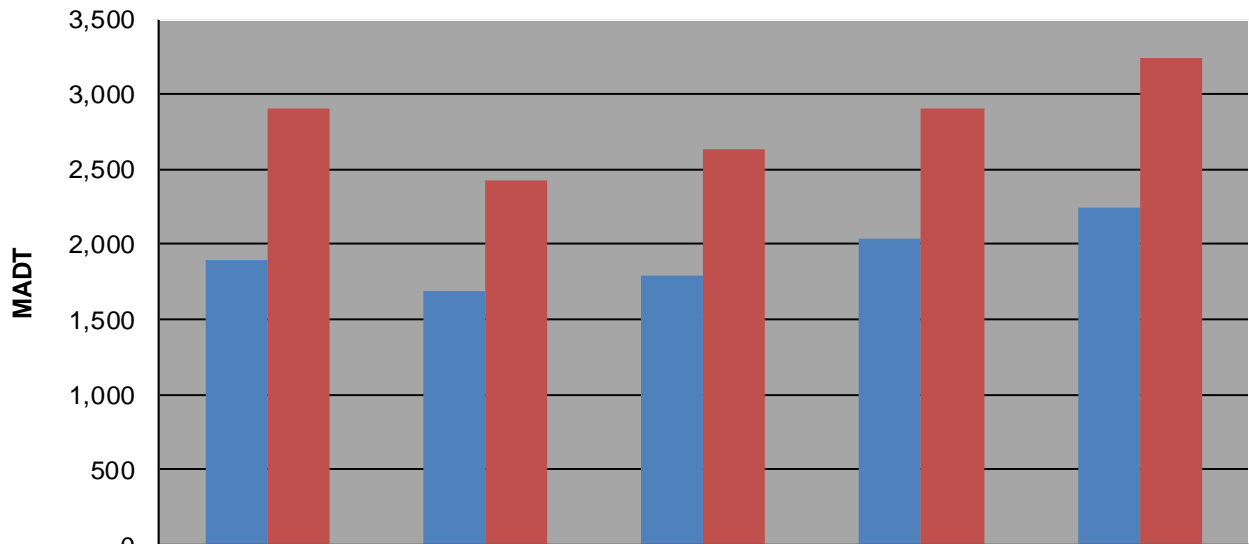
### Weekday (WD)/Weekend (WE) Monthly Average Daily Traffic



	Jan	Feb	Mar	Apr	May	Jun	Jul	Aug	Sep	Oct	Nov	Dec
'12 WD	916	952	990	1,164	2,020	1,722	1,996	2,088	1,896	1,574	1,538	1,022
'12 WE	1,196	1,334	1,396	1,716	2,564	2,876	3,216	3,254	2,900	2,634	2,184	1,166
'13 WD	900	930	912	840	1,696	1,686	1,940	1,520	1,686	1,460	1,584	894
'13 WE	1,116	1,214	1,234	1,182	2,124	2,636	3,230	2,442	2,424	2,562	2,222	1,178
'14 WD	836	836	844	886	1,778	1,732	2,142	2,044	1,788	1,504	1,488	1,034
'14 WE	1,092	1,090	1,162	1,336	2,346	2,510	3,474	3,086	2,640	2,712	2,074	1,254
'15 WD	934	936	998	1,136	1,936	1,830	2,260	1,952	2,034	1,638	1,686	1,042
'15 WE	1,252	1,198	1,388	1,700	2,564	2,934	3,628	3,098	2,900	2,940	2,184	1,282
'16 WD	964	1,054	1,018	1,194	2,172	2,080	2,794	2,238	2,250			
'16 WE	1,382	1,408	1,396	1,762	2,810	3,240	3,794	3,724	3,244			

Note: 'Weekday' defined as Monday-Friday, 'Weekend' defined as Saturday-Sunday

### Weekday/Weekend Monthly Average Daily Traffic ('12-'16)



	Sep-12	Sep-13	Sep-14	Sep-15	Sep-16
Weekday	1,896	1,686	1,788	2,034	2,250
Weekend	2,900	2,424	2,640	2,900	3,244