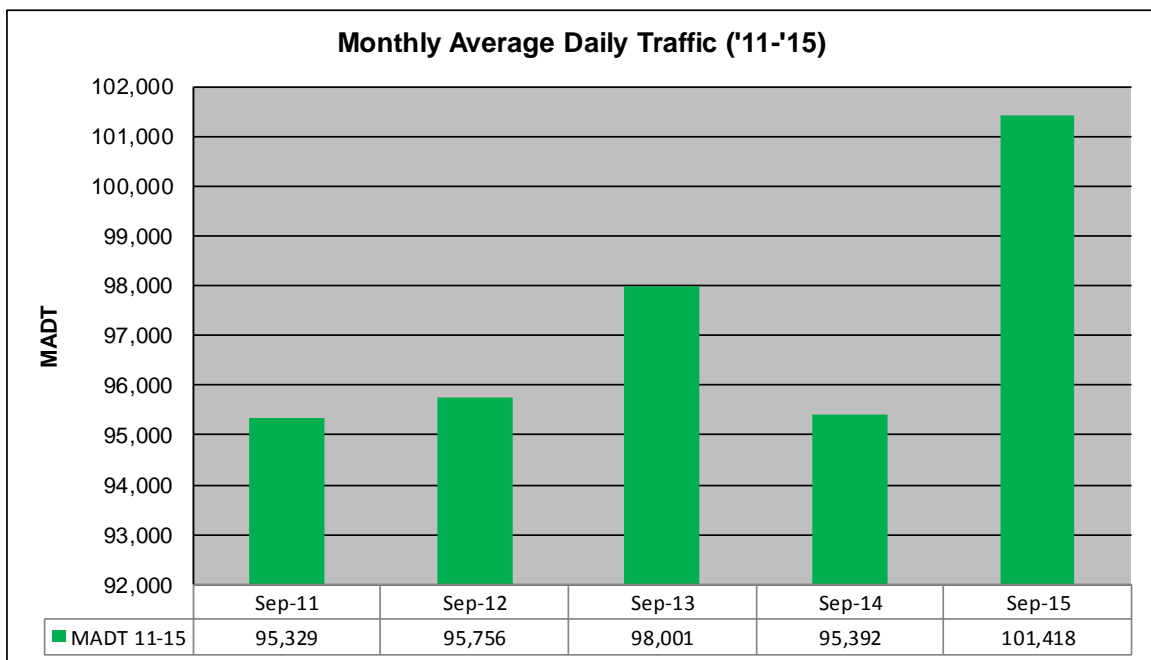
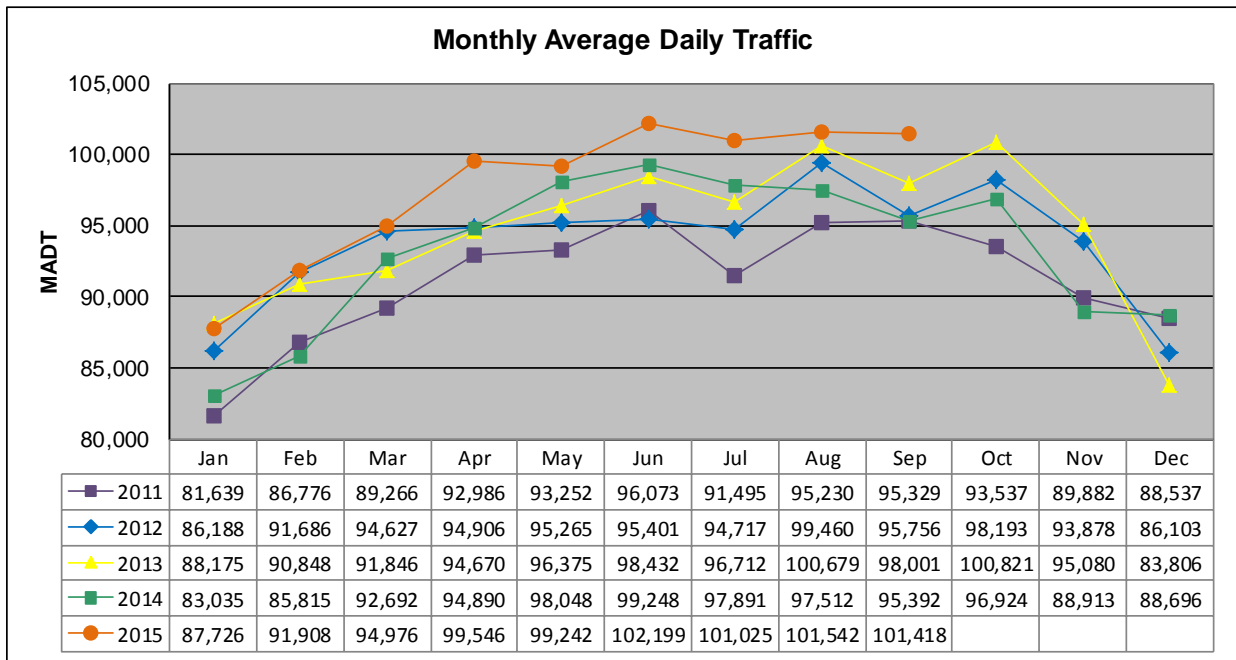


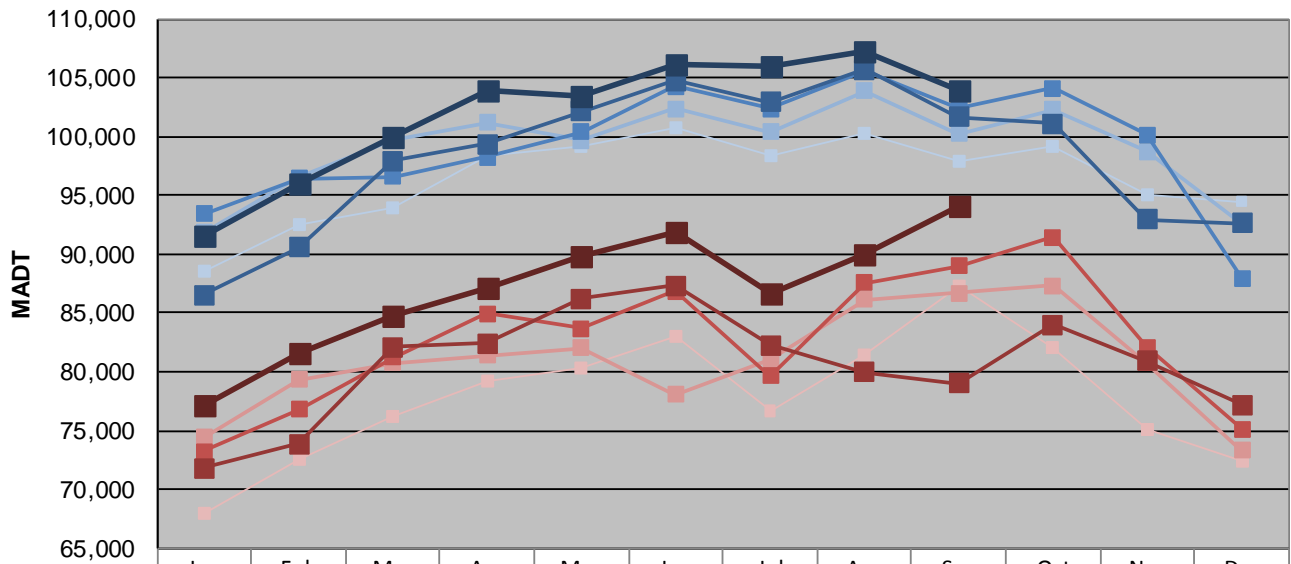
MONTHLY REPORT, STATION NO. 329 (ATR)

SEPTEMBER 2015

| | | |
|---|----------------------|-------------------------------------|
| Station Measurement: VOLUME | | |
| Route: I-35W | Route Direction: N/S | Lanes: 4 |
| County: Hennepin | | Closest City: Minneapolis |
| Functional Class: Urban Principal Arterial - Interstate | | |
| Location: AT FRANKLIN AVE IN MINNEAPOLIS | | |
| Ref Post: 016+00.680 | True Mile: 16.713 | Sequence No. 9851 |
| Volume: 3,042,528 | | MADT: 101,418 |
| Weekday (M-F) MADT: 103,978 | | Weekend (Sa-Su) MADT: 94,128 |



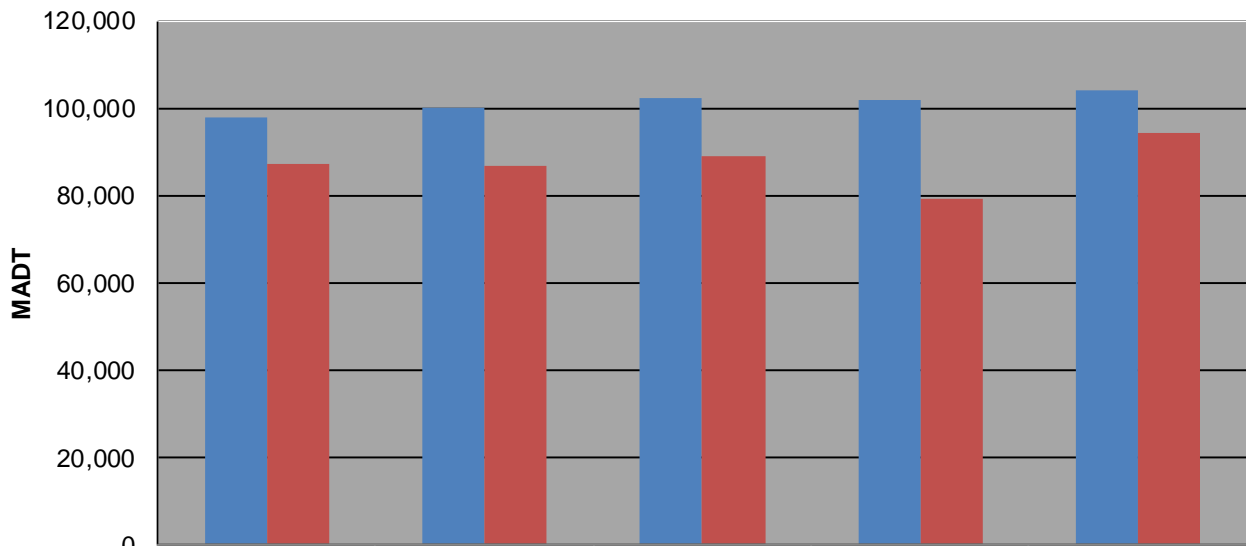
Weekday (WD)/Weekend (WE) Monthly Average Daily Traffic



| | Jan | Feb | Mar | Apr | May | Jun | Jul | Aug | Sep | Oct | Nov | Dec |
|--------|--------|--------|--------|---------|---------|---------|---------|---------|---------|---------|---------|--------|
| '11 WD | 88,592 | 92,444 | 93,910 | 98,328 | 99,206 | 100,688 | 98,396 | 100,272 | 97,848 | 99,206 | 95,070 | 94,480 |
| '11 WE | 67,902 | 72,578 | 76,222 | 79,264 | 80,366 | 83,088 | 76,702 | 81,358 | 87,258 | 82,124 | 75,080 | 72,466 |
| '12 WD | 91,808 | 96,530 | 99,654 | 101,172 | 99,716 | 102,386 | 100,406 | 103,910 | 100,274 | 102,284 | 98,708 | 92,600 |
| '12 WE | 74,406 | 79,324 | 80,722 | 81,398 | 82,036 | 78,102 | 81,100 | 86,106 | 86,724 | 87,338 | 80,724 | 73,322 |
| '13 WD | 93,434 | 96,456 | 96,588 | 98,236 | 100,370 | 104,238 | 102,390 | 105,602 | 102,424 | 104,124 | 100,152 | 87,968 |
| '13 WE | 73,206 | 76,828 | 81,260 | 84,934 | 83,728 | 86,820 | 79,688 | 87,538 | 89,030 | 91,458 | 82,126 | 75,158 |
| '14 WD | 86,534 | 90,586 | 97,976 | 99,394 | 102,174 | 104,746 | 102,966 | 105,734 | 101,664 | 101,122 | 92,926 | 92,598 |
| '14 WE | 71,786 | 73,892 | 82,138 | 82,412 | 86,224 | 87,332 | 82,276 | 79,974 | 79,052 | 84,042 | 80,890 | 77,220 |
| '15 WD | 91,600 | 96,040 | 99,948 | 103,972 | 103,512 | 106,058 | 105,992 | 107,168 | 103,978 | | | |
| '15 WE | 77,238 | 81,582 | 84,784 | 87,202 | 89,756 | 91,934 | 86,598 | 90,022 | 94,128 | | | |

Note: 'Weekday' defined as Monday-Friday, 'Weekend' defined as Saturday-Sunday

Weekday/Weekend Monthly Average Daily Traffic ('11-'15)



| | Sep-11 | Sep-12 | Sep-13 | Sep-14 | Sep-15 |
|---------|--------|---------|---------|---------|---------|
| Weekday | 97,848 | 100,274 | 102,424 | 101,664 | 103,978 |
| Weekend | 87,258 | 86,724 | 89,030 | 79,052 | 94,128 |