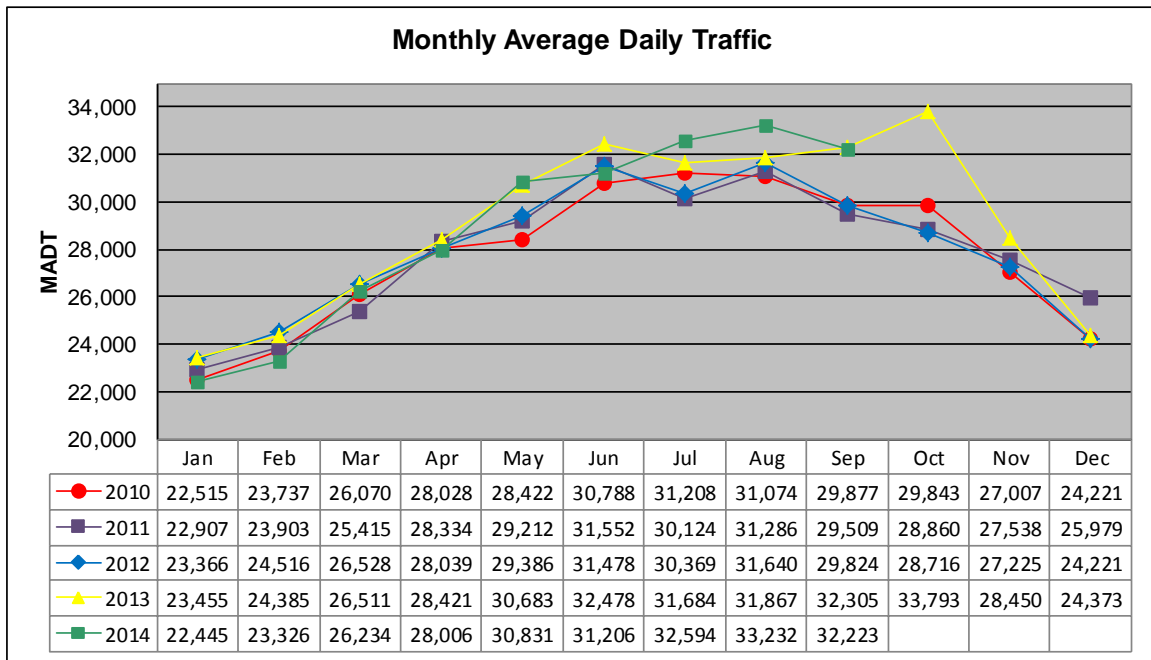


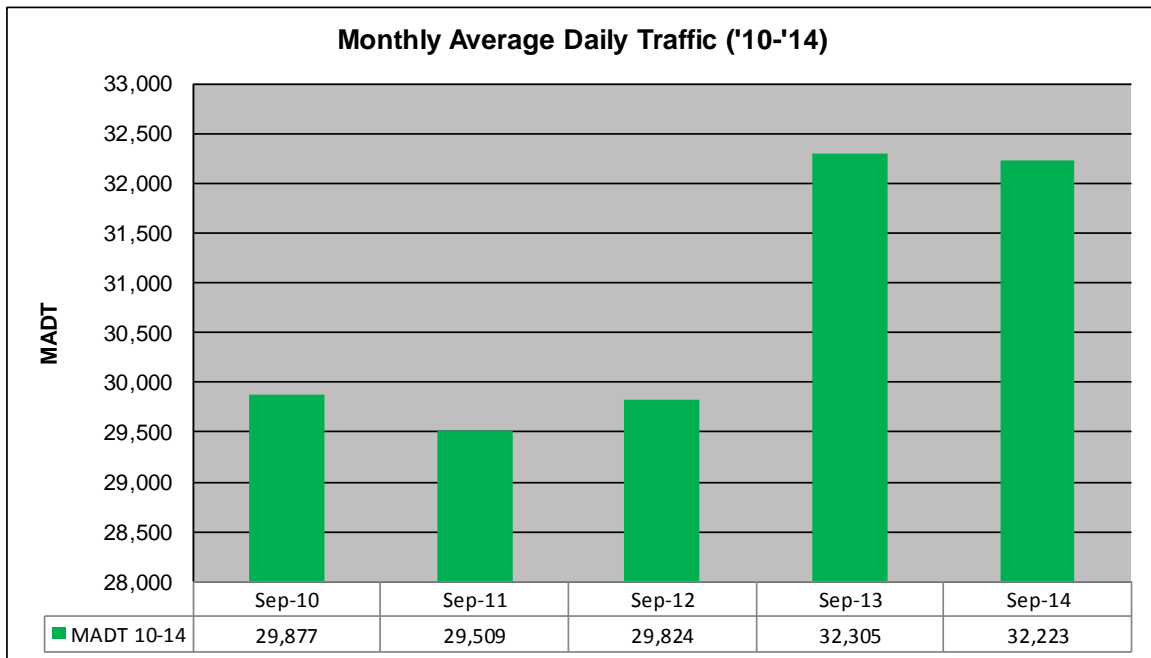
MONTHLY REPORT, STATION NO. 382 (ATR)

SEPTEMBER 2014

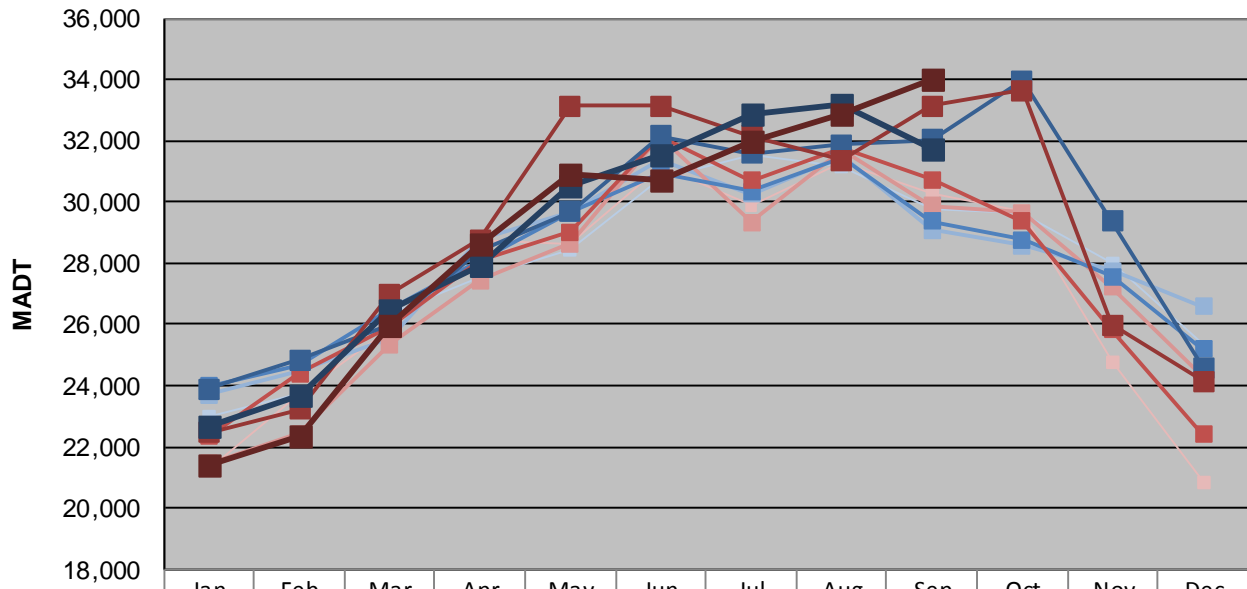
Station Measurement: VOLUME/SPEED/CLASS		
Route: TH 52	Route Direction: N/S	Lanes: 4
County: Dakota		Closest City: Coates
Functional Class: Rural Principal Arterial - Other		
Location: N OF 180TH ST E, S OF COATES		
Ref Post: 111+00.966	True Mile: 112.328	Sequence No. 9871
Volume: 966,681		MADT: 32,223
Weekday (M-F) MADT: 31,724		Weekend (Sa-Su) MADT: 34,018



Note: Increase in traffic September to November 2013 and July/August 2014 due to detour from TH 3



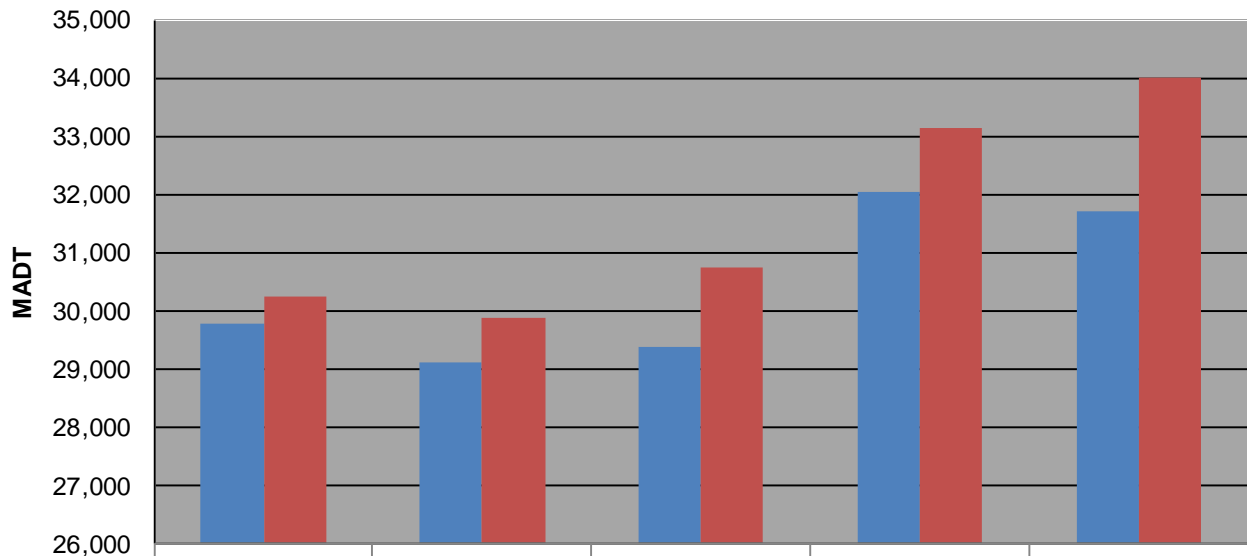
Weekday (WD)/Weekend (WE) Monthly Average Daily Traffic



	Jan	Feb	Mar	Apr	May	Jun	Jul	Aug	Sep	Oct	Nov	Dec
'10 WD	23,020	23,732	26,348	27,556	28,422	30,752	31,514	31,172	29,776	29,650	28,018	25,304
'10 WE	21,262	23,750	25,812	28,758	28,650	31,188	29,874	31,286	30,258	29,682	24,736	20,856
'11 WD	23,704	24,478	25,570	28,770	29,656	31,372	30,260	31,500	29,096	28,586	27,752	26,582
'11 WE	21,468	22,440	25,348	27,444	28,644	32,166	29,330	31,720	29,862	29,658	27,228	24,264
'12 WD	23,982	24,646	26,528	28,082	29,650	30,966	30,338	31,446	29,368	28,754	27,570	25,202
'12 WE	22,338	24,406	25,948	28,086	29,032	32,136	30,712	31,768	30,740	29,360	25,812	22,390
'13 WD	23,878	24,844	26,000	28,386	29,690	32,142	31,600	31,858	32,046	33,954	29,380	24,588
'13 WE	22,482	23,240	26,982	28,778	33,130	33,150	32,158	31,360	33,138	33,658	25,986	24,156
'14 WD	22,682	23,712	26,464	27,906	30,548	31,534	32,858	33,178	31,724			
'14 WE	21,382	22,362	25,946	28,616	30,936	30,712	31,974	32,844	34,018			

Note: 'Weekday' defined as Monday-Friday, 'Weekend' defined as Saturday-Sunday

Weekday/Weekend Monthly Average Daily Traffic ('10-'14)



	Sep-10	Sep-11	Sep-12	Sep-13	Sep-14
Weekday	29,776	29,096	29,368	32,046	31,724
Weekend	30,258	29,862	30,740	33,138	34,018