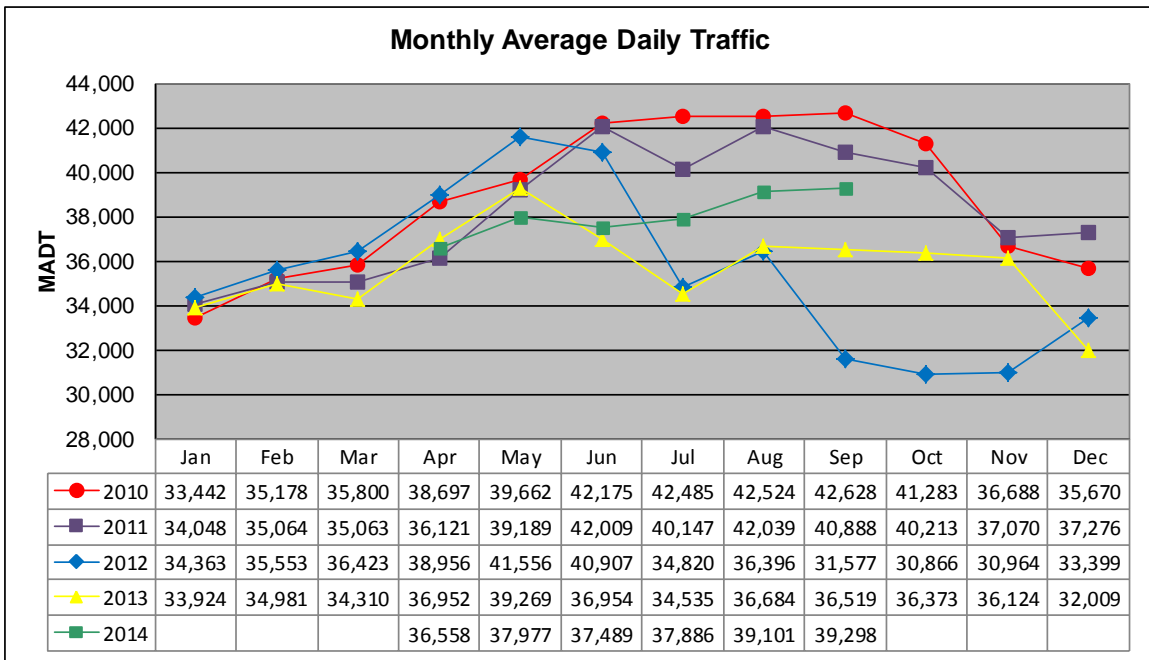


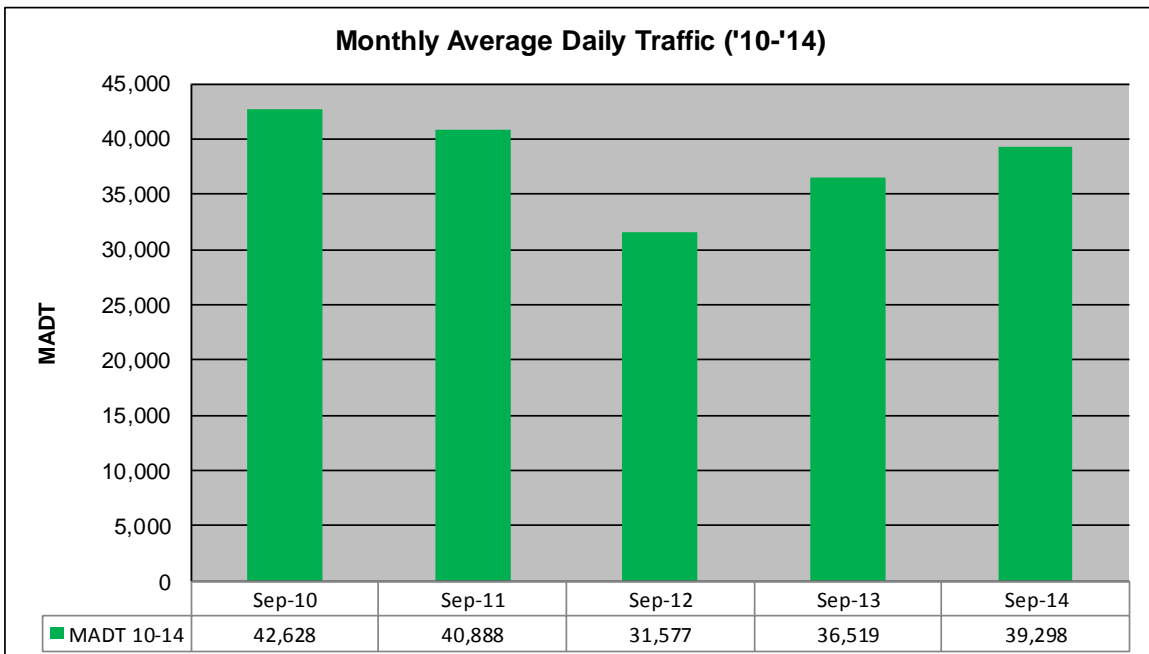
MONTHLY REPORT, STATION NO. 36 (WIM)

SEPTEMBER 2014

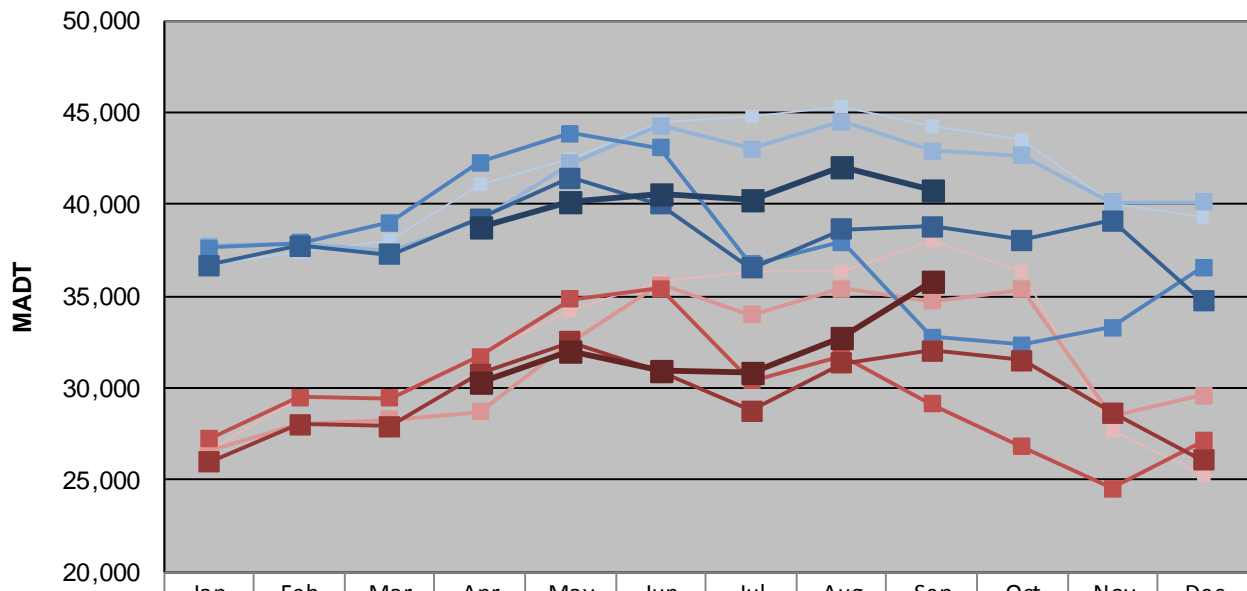
Station Measurement: VOLUME/SPEED/CLASS/WEIGHT		
Route: TH 36	Route Direction: E/W	Lanes: 4
County: Washington		Closest City: Lake Elmo
Functional Class: Urban Other Principal Arterial		
Location: .7 MI W OF CSAH17 (LAKE ELMO AVE N) IN LAKE ELMO		
Ref Post: 014+00.983	True Mile: 15.022	Sequence No. 10237
Volume: 1,178,926		MADT: 39,298
Weekday (M-F) MADT: 40,748		Weekend (Sa-Su) MADT: 35,832



Note: Decrease in traffic July to November 2012 and June to October 2013 due to construction on TH 36... No data January to March 2014 due to site communication issues



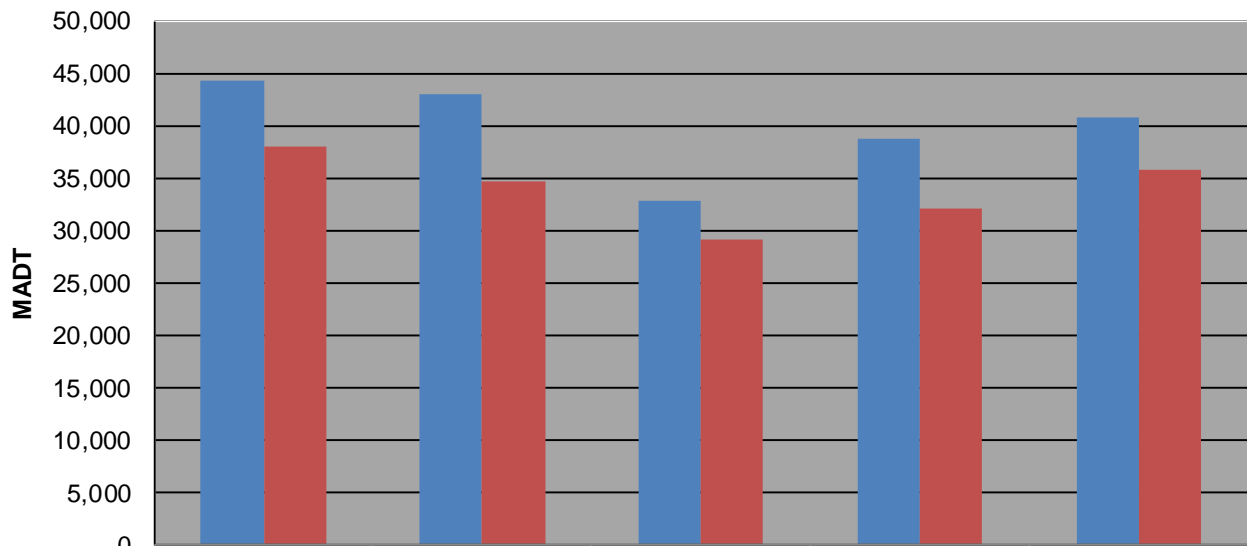
Weekday (WD)/Weekend (WE) Monthly Average Daily Traffic



	Jan	Feb	Mar	Apr	May	Jun	Jul	Aug	Sep	Oct	Nov	Dec
'10 WD	36,740	37,440	38,028	41,068	42,430	44,474	44,768	45,296	44,208	43,518	40,026	39,304
'10 WE	26,596	29,524	29,486	31,814	34,236	35,862	36,288	36,384	38,008	36,352	27,658	25,246
'11 WD	37,762	37,868	37,442	39,140	42,238	44,278	43,012	44,476	42,930	42,636	40,122	40,136
'11 WE	26,542	28,054	28,308	28,732	32,490	35,618	33,986	35,436	34,730	35,378	28,488	29,632
'12 WD	37,628	37,912	39,018	42,298	43,856	43,042	36,742	37,956	32,800	32,330	33,298	36,576
'12 WE	27,234	29,510	29,464	31,718	34,812	35,436	30,384	31,700	29,130	26,834	24,532	27,104
'13 WD	36,708	37,754	37,242	39,212	41,436	39,990	36,500	38,638	38,780	38,044	39,094	34,722
'13 WE	25,992	28,050	27,924	30,754	32,510	30,882	28,790	31,332	32,020	31,522	28,646	26,068
'14 WD				38,810	40,104	40,524	40,210	42,016	40,748			
'14 WE				30,304	32,034	30,912	30,830	32,790	35,832			

Note: 'Weekday' defined as Monday-Friday, 'Weekend' defined as Saturday-Sunday

Weekday/Weekend Monthly Average Daily Traffic ('10-'14)



	Sep-10	Sep-11	Sep-12	Sep-13	Sep-14
Weekday	44,208	42,930	32,800	38,780	40,748
Weekend	38,008	34,730	29,130	32,020	35,832