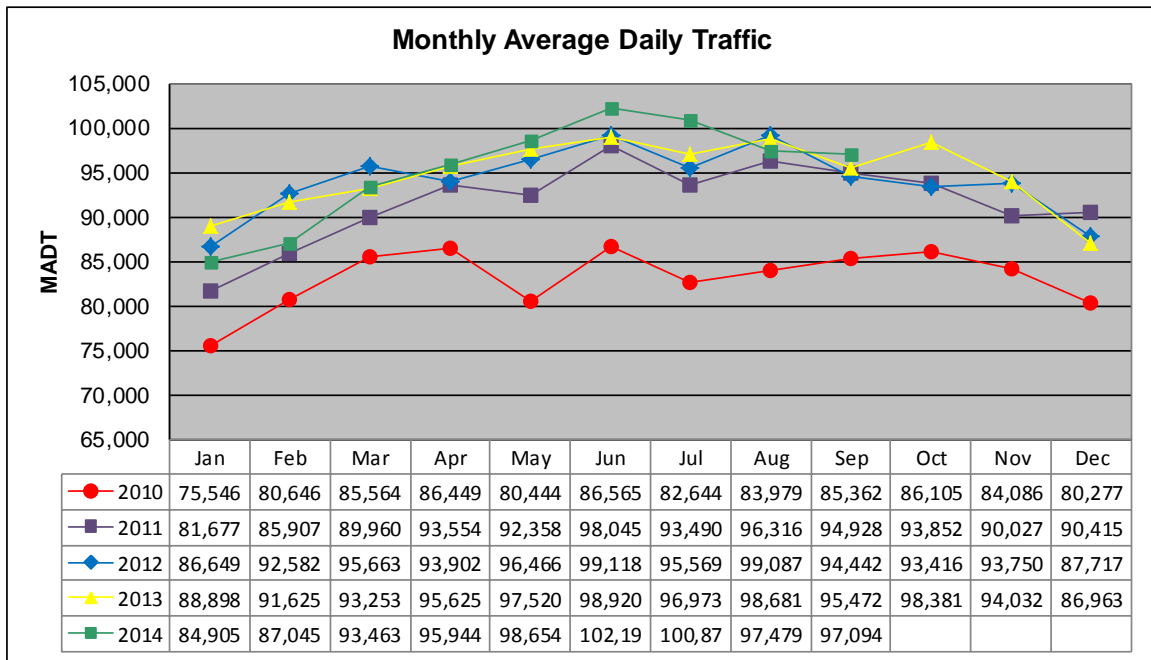


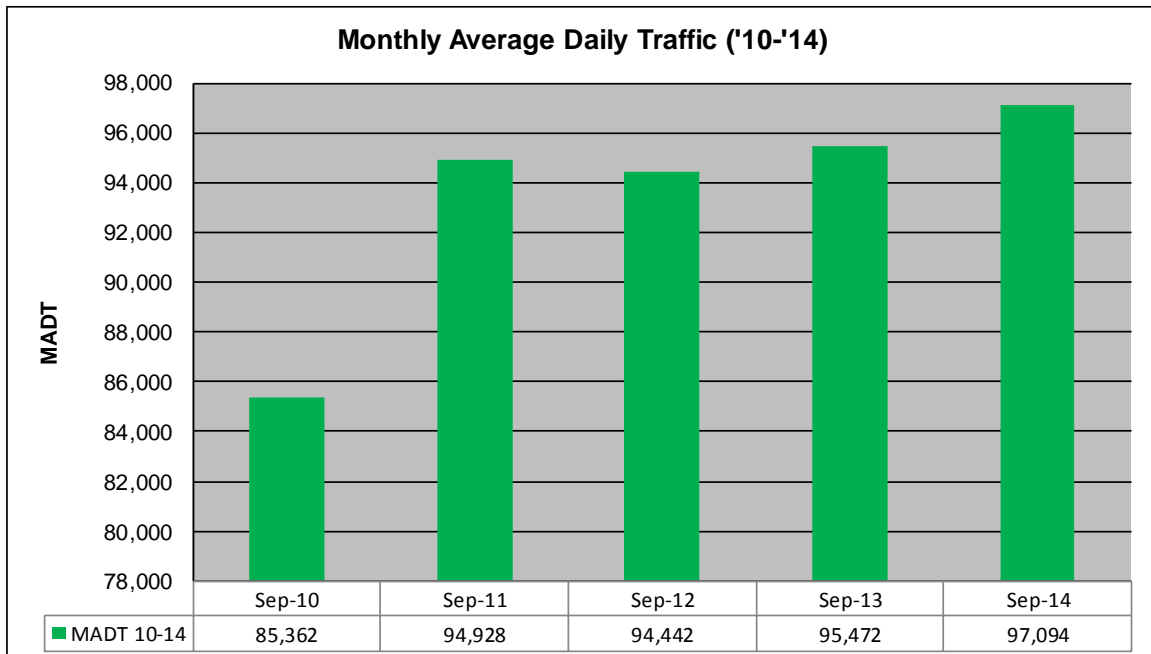
MONTHLY REPORT, STATION NO. 309 (ATR)

SEPTEMBER 2014

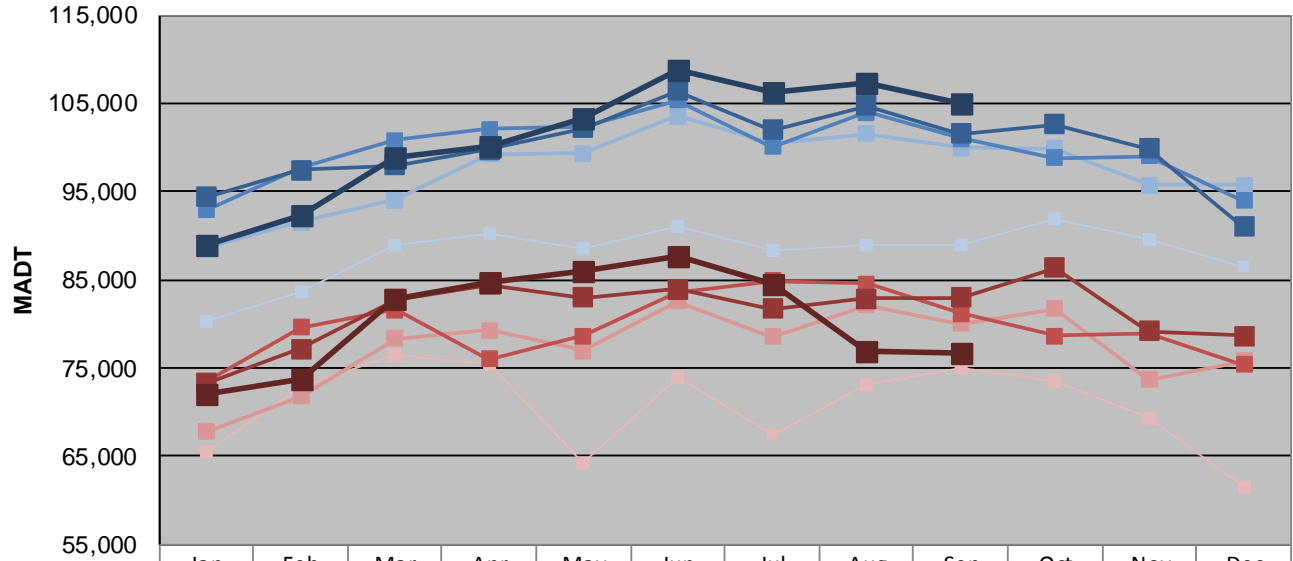
| | | |
|---|----------------------|-------------------------------------|
| Station Measurement: VOLUME | | |
| Route: TH 65 | Route Direction: N/S | Lanes: 6 |
| County: Hennepin | | Closest City: Minneapolis |
| Functional Class: Urban Minor Arterial | | |
| Location: S OF CSAH 5 (E FRANKLIN AVE) IN MINNEAPOLIS | | |
| Ref Post: 000+00.480 | True Mile: 0.48 | Sequence No. 9838 |
| Volume: 2,912,828 | | MADT: 97,094 |
| Weekday (M-F) MADT: 104,948 | | Weekend (Sa-Su) MADT: 76,656 |



Note: Decrease in traffic 2008-2009 due to I-35W bridge collapse and construction on TH 62... Although traffic increased from 2009 to 2010, volumes were lower than expected due to construction on I-35W and TH 62



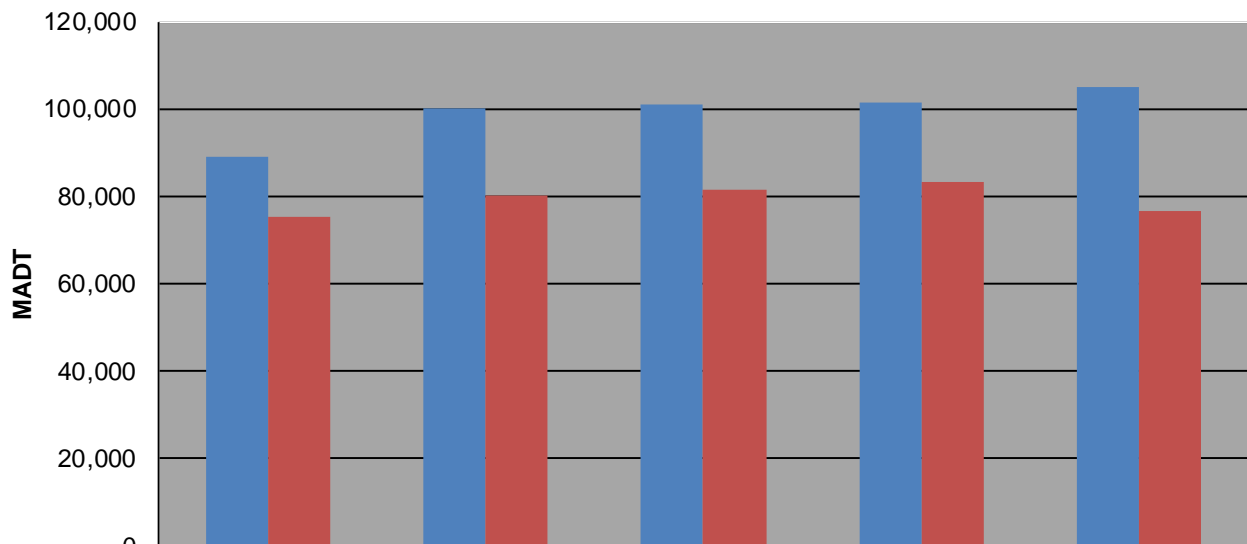
Weekday (WD)/Weekend (WE) Monthly Average Daily Traffic



| | Jan | Feb | Mar | Apr | May | Jun | Jul | Aug | Sep | Oct | Nov | Dec |
|--------|--------|--------|---------|---------|---------|---------|---------|---------|---------|---------|--------|--------|
| '10 WD | 80,314 | 83,736 | 88,986 | 90,184 | 88,512 | 91,110 | 88,276 | 88,858 | 88,964 | 91,878 | 89,498 | 86,498 |
| '10 WE | 65,512 | 72,922 | 76,566 | 75,508 | 64,334 | 74,030 | 67,466 | 73,024 | 75,024 | 73,546 | 69,320 | 61,546 |
| '11 WD | 88,724 | 91,542 | 94,104 | 99,192 | 99,328 | 103,524 | 100,430 | 101,516 | 99,974 | 99,858 | 95,792 | 95,786 |
| '11 WE | 67,784 | 71,794 | 78,362 | 79,268 | 76,928 | 82,578 | 78,590 | 82,114 | 80,026 | 81,762 | 73,722 | 75,806 |
| '12 WD | 92,882 | 97,624 | 100,822 | 102,040 | 102,392 | 105,360 | 100,084 | 103,934 | 101,050 | 98,834 | 99,032 | 93,974 |
| '12 WE | 73,406 | 79,596 | 81,592 | 76,054 | 78,704 | 83,610 | 84,858 | 84,582 | 81,230 | 78,700 | 78,996 | 75,418 |
| '13 WD | 94,380 | 97,426 | 97,926 | 99,764 | 102,162 | 106,436 | 102,012 | 104,710 | 101,548 | 102,578 | 99,902 | 90,962 |
| '13 WE | 73,278 | 77,124 | 82,752 | 84,464 | 82,974 | 83,890 | 81,746 | 82,922 | 83,026 | 86,350 | 79,146 | 78,670 |
| '14 WD | 88,992 | 92,406 | 98,826 | 100,088 | 103,198 | 108,808 | 106,164 | 107,210 | 104,948 | | | |
| '14 WE | 72,118 | 73,646 | 82,852 | 84,638 | 86,040 | 87,650 | 84,574 | 76,808 | 76,656 | | | |

Note: 'Weekday' defined as Monday-Friday, 'Weekend' defined as Saturday-Sunday

Weekday/Weekend Monthly Average Daily Traffic ('10-'14)



| | Sep-10 | Sep-11 | Sep-12 | Sep-13 | Sep-14 |
|---------|--------|--------|---------|---------|---------|
| Weekday | 88,964 | 99,974 | 101,050 | 101,548 | 104,948 |
| Weekend | 75,024 | 80,026 | 81,230 | 83,026 | 76,656 |