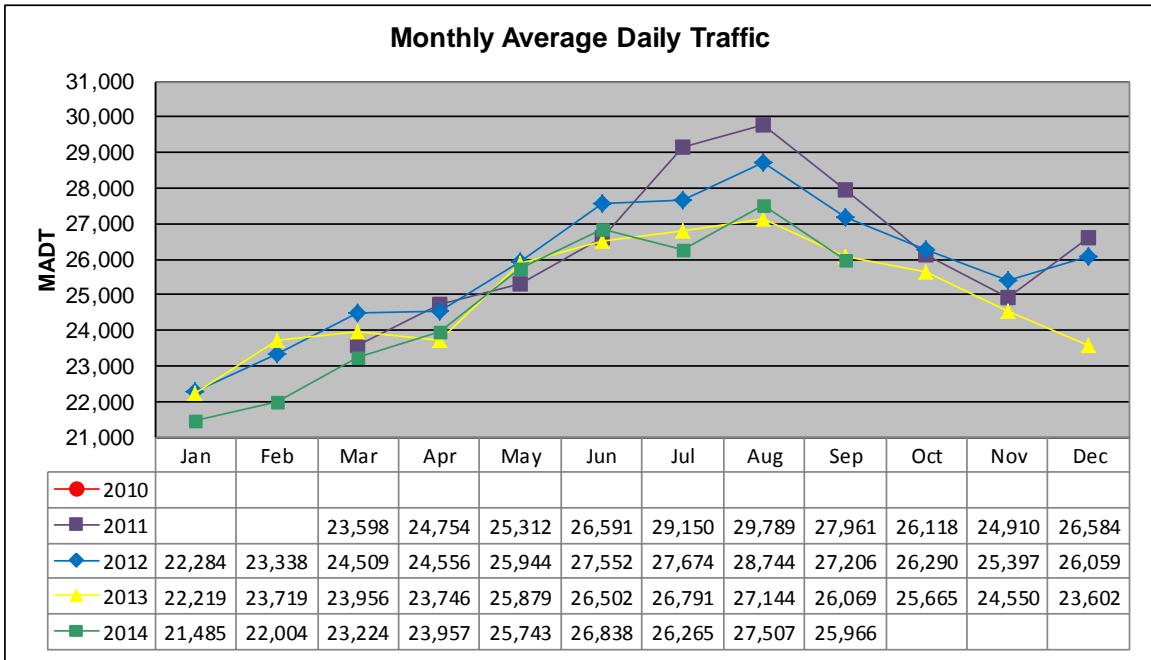


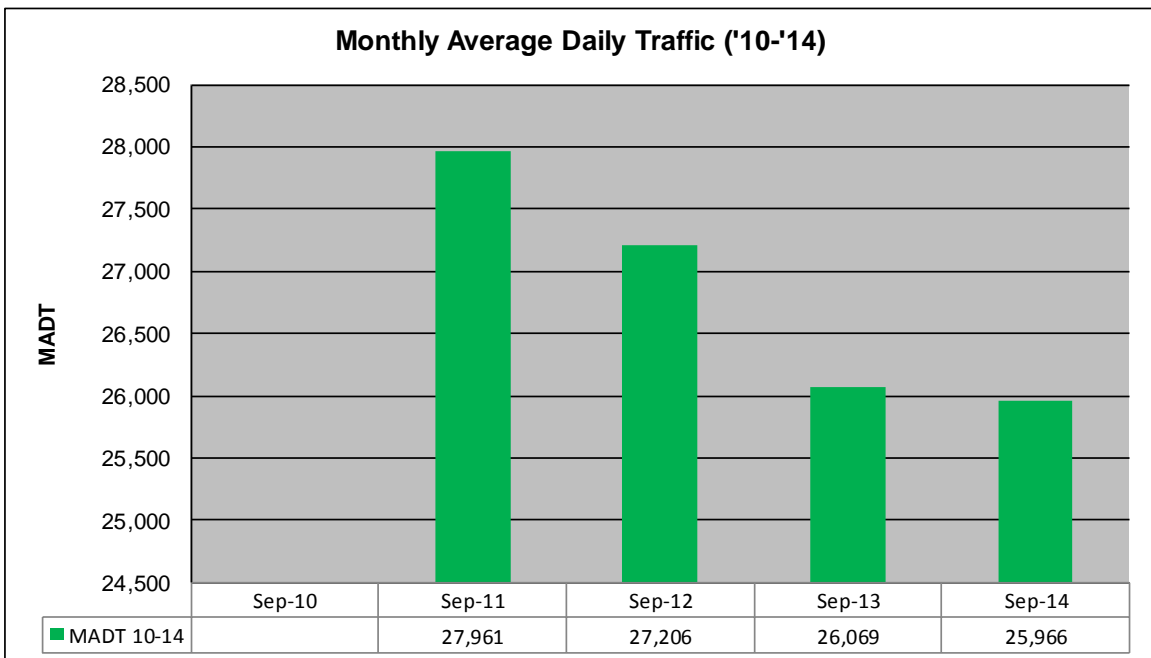
MONTHLY REPORT, STATION NO. 110 (ATR)

SEPTEMBER 2014

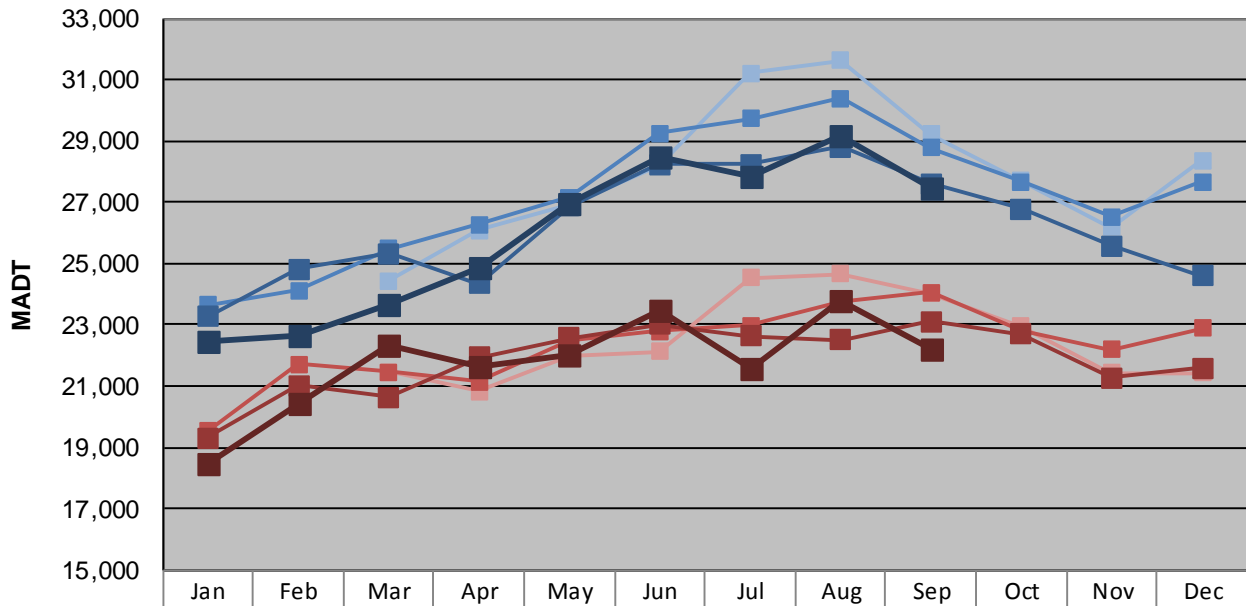
| | | |
|--|----------------------|-------------------------------------|
| Station Measurement: VOLUME | | |
| Route: TH 53 | Route Direction: N/S | Lanes: 4 |
| County: St Louis | | Closest City: Duluth |
| Functional Class: Urban Other Principal Arterial | | |
| Location: SE OF CSAH6 (MAPLE GROVE RD) IN DULUTH | | |
| Ref Post: 005+00.000 | True Mile: 6.129 | Sequence No. 9827 |
| Volume: 778,967 | | MADT: 25,966 |
| Weekday (M-F) MADT: 27,448 | | Weekend (Sa-Su) MADT: 22,210 |



Note: No data January 2010 to February 2011 due to sensors destroyed by construction



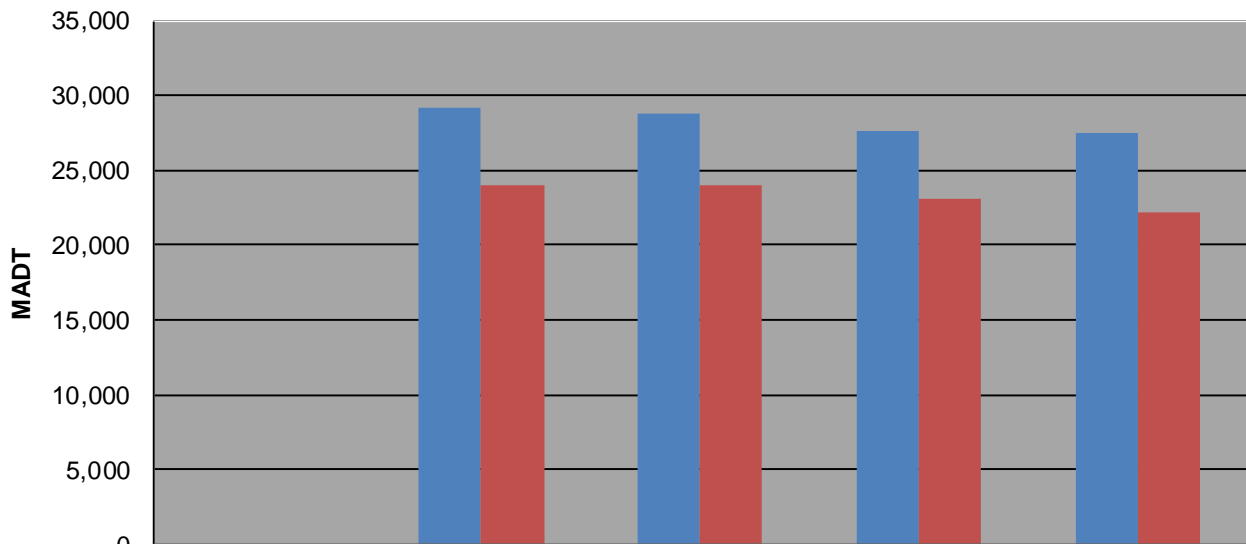
Weekday (WD)/Weekend (WE) Monthly Average Daily Traffic



| | Jan | Feb | Mar | Apr | May | Jun | Jul | Aug | Sep | Oct | Nov | Dec |
|--------|--------|--------|--------|--------|--------|--------|--------|--------|--------|--------|--------|--------|
| '10 WD | | | | | | | | | | | | |
| '10 WE | | | | | | | | | | | | |
| '11 WD | | | 24,442 | 26,078 | 26,914 | 28,220 | 31,214 | 31,618 | 29,224 | 27,690 | 26,170 | 28,352 |
| '11 WE | | | 21,462 | 20,822 | 21,980 | 22,136 | 24,544 | 24,660 | 24,016 | 22,956 | 21,422 | 21,420 |
| '12 WD | 23,632 | 24,120 | 25,494 | 26,276 | 27,158 | 29,258 | 29,718 | 30,394 | 28,780 | 27,664 | 26,524 | 27,662 |
| '12 WE | 19,536 | 21,706 | 21,474 | 21,136 | 22,510 | 22,798 | 22,988 | 23,756 | 24,058 | 22,784 | 22,184 | 22,884 |
| '13 WD | 23,276 | 24,804 | 25,332 | 24,360 | 26,868 | 28,252 | 28,236 | 28,798 | 27,596 | 26,790 | 25,574 | 24,608 |
| '13 WE | 19,322 | 21,012 | 20,654 | 21,928 | 22,556 | 23,004 | 22,620 | 22,520 | 23,094 | 22,688 | 21,280 | 21,590 |
| '14 WD | 22,440 | 22,636 | 23,668 | 24,858 | 26,958 | 28,496 | 27,864 | 29,156 | 27,448 | | | |
| '14 WE | 18,486 | 20,428 | 22,322 | 21,666 | 21,986 | 23,498 | 21,562 | 23,786 | 22,210 | | | |

Note: 'Weekday' defined as Monday-Friday, 'Weekend' defined as Saturday-Sunday

Weekday/Weekend Monthly Average Daily Traffic ('10-'14)



| | Sep-10 | Sep-11 | Sep-12 | Sep-13 | Sep-14 |
|---------|--------|--------|--------|--------|--------|
| Weekday | | 29,224 | 28,780 | 27,596 | 27,448 |
| Weekend | | 24,016 | 24,058 | 23,094 | 22,210 |