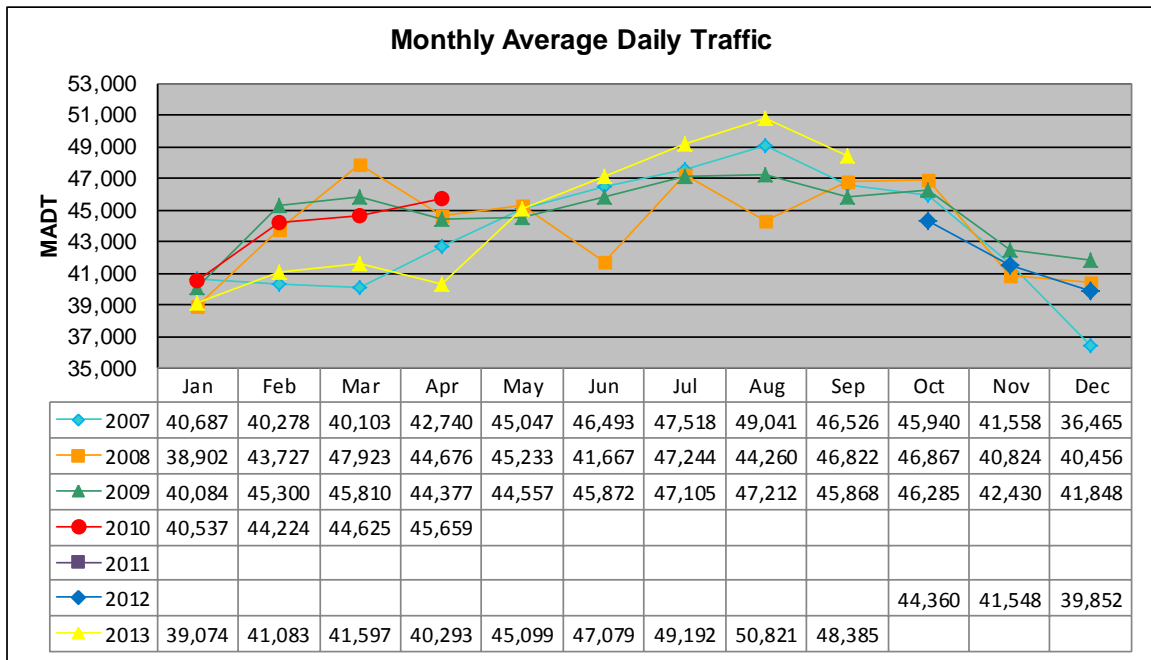


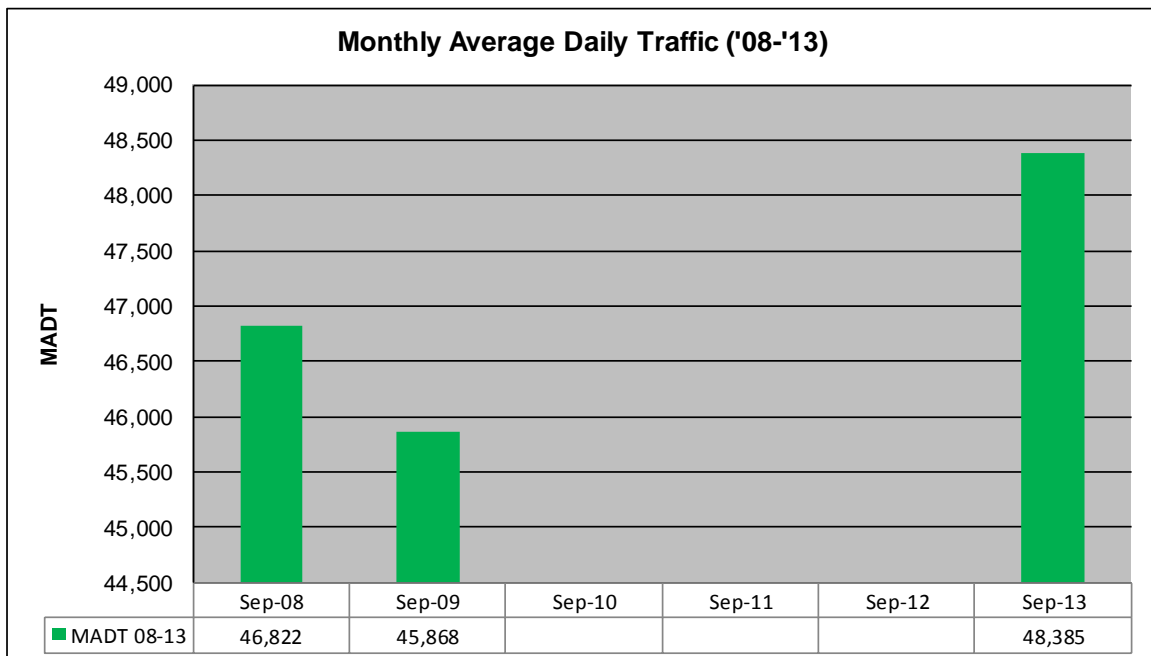
# MONTHLY REPORT, STATION NO. 103 (ATR)

## SEPTEMBER 2013

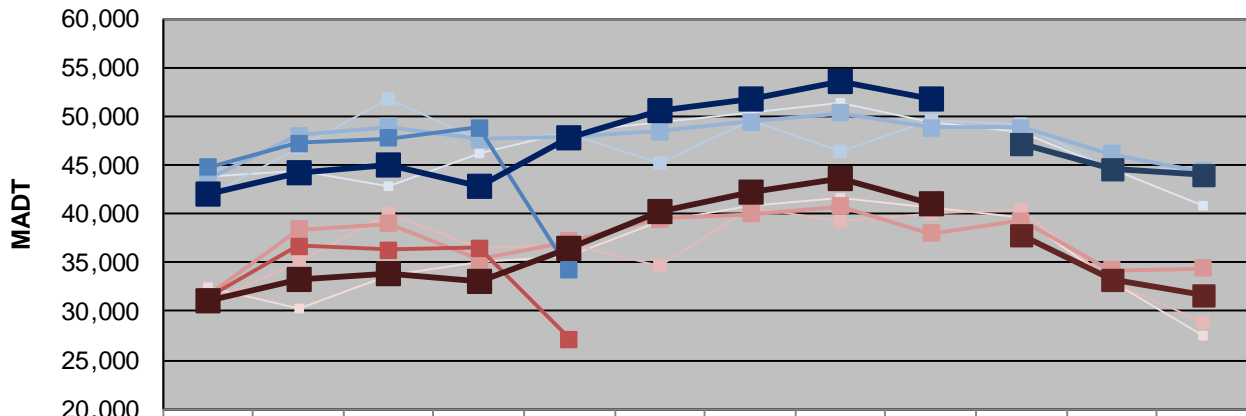
Station Measurement: VOLUME/SPEED/CLASS		
Route: I-35	Route Direction: N/S	Lanes: 4
County: St Louis	Closest City: Duluth	
Functional Class: Urban Principal Arterial - Interstate		
Location: E OF MSAS107 (CENTRAL AVE) IN DULUTH		
Ref Post: 252+00.600	True Mile: 252.622	Sequence No. 9825
<b>Volume: 1,451,549</b>		<b>MADT: 48,385</b>
<b>Weekday (M-F) MADT: 51,702</b>		<b>Weekend (Sa-Su) MADT: 41,114</b>



Note: Decrease in traffic during June and August 2008 due to construction... No data from May 2010 to September 2012 due to sensors destroyed by construction



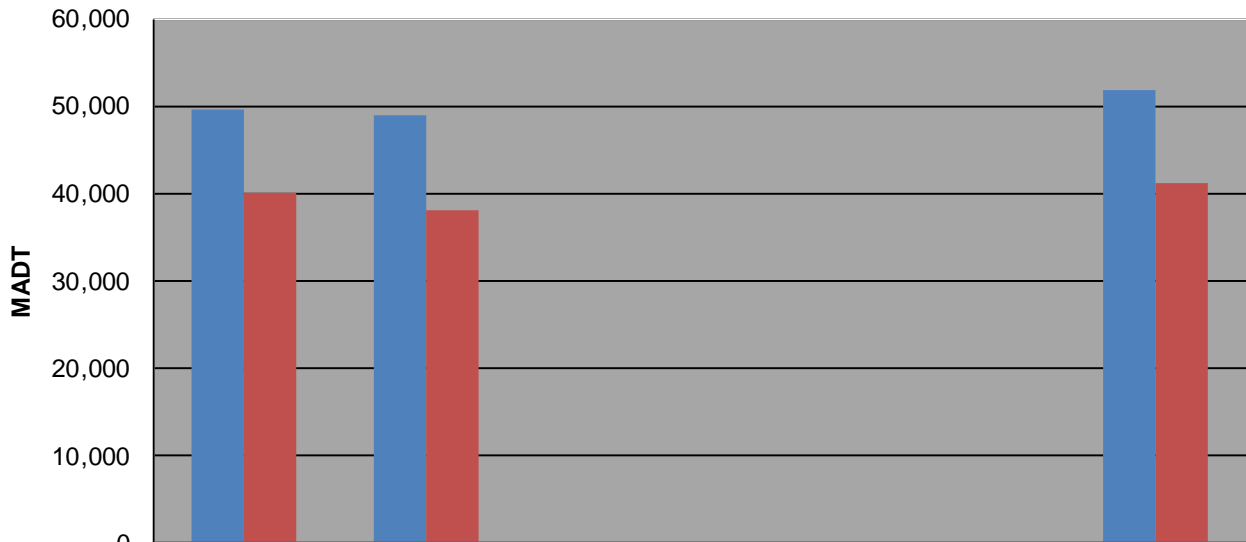
**Weekday (WD)/Weekend (WE) Monthly Average Daily Traffic**



	Jan	Feb	Mar	Apr	May	Jun	Jul	Aug	Sep	Oct	Nov	Dec
'07 WD	43,808	44,312	42,864	46,116	48,328	49,328	50,420	51,396	49,444	48,456	44,568	40,824
'07 WE	32,392	30,194	33,742	35,058	35,704	39,244	40,844	41,594	40,690	39,626	33,068	27,498
'08 WD	41,880	46,818	51,814	47,642	48,178	45,142	49,496	46,334	49,606	49,092	44,664	44,552
'08 WE	30,896	34,994	39,940	36,496	36,906	34,658	40,546	39,184	39,984	40,460	33,144	28,814
'09 WD	43,470	48,064	48,958	47,678	47,798	48,468	49,394	50,336	48,866	48,780	46,106	44,374
'09 WE	31,576	38,390	39,024	35,294	37,226	39,450	40,028	40,744	38,018	39,328	34,168	34,396
'10 WD	44,794	47,236	47,690	48,788	34,164							
'10 WE	31,468	36,696	36,306	36,452	27,184							
'11 WD												
'11 WE												
'12 WD										47,226	44,522	43,934
'12 WE										37,924	33,176	31,674
'13 WD	41,942	44,202	45,038	42,860	47,856	50,536	51,758	53,476	51,702			
'13 WE	31,028	33,286	33,786	33,044	36,374	40,166	42,140	43,614	41,114			

Note: 'Weekday' defined as Monday-Friday, 'Weekend' defined as Saturday-Sunday

**Weekday/Weekend Monthly Average Daily Traffic ('08-'13)**



	Sep-08	Sep-09	Sep-10	Sep-11	Sep-12	Sep-13
Weekday	49,606	48,866				51,702
Weekend	39,984	38,018				41,114