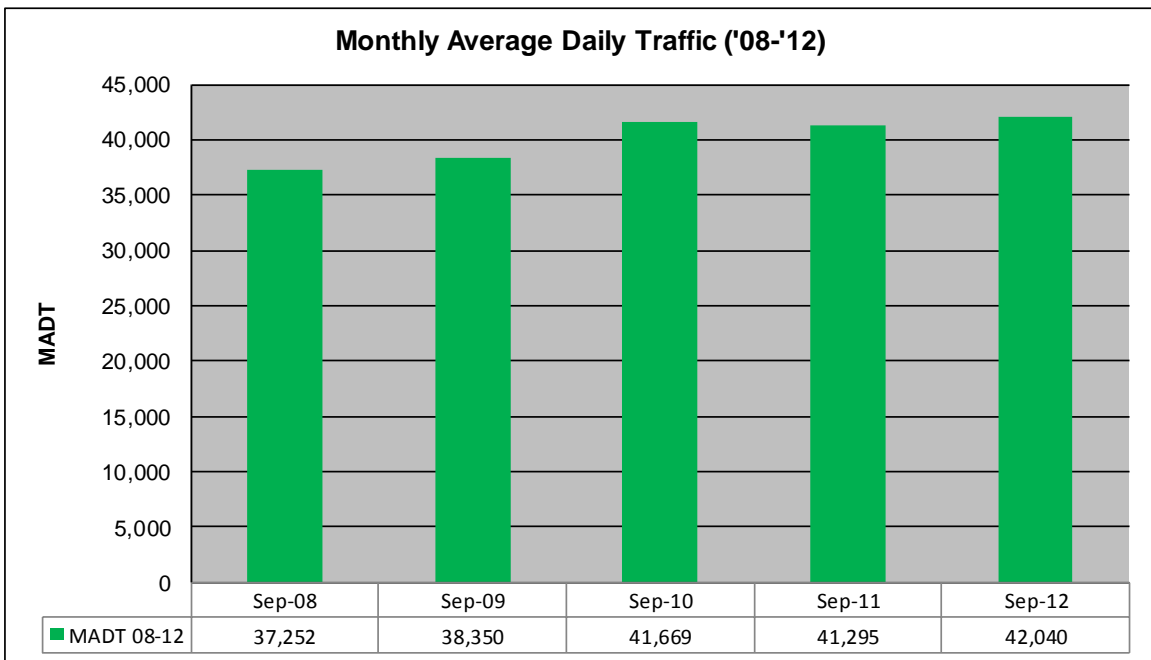
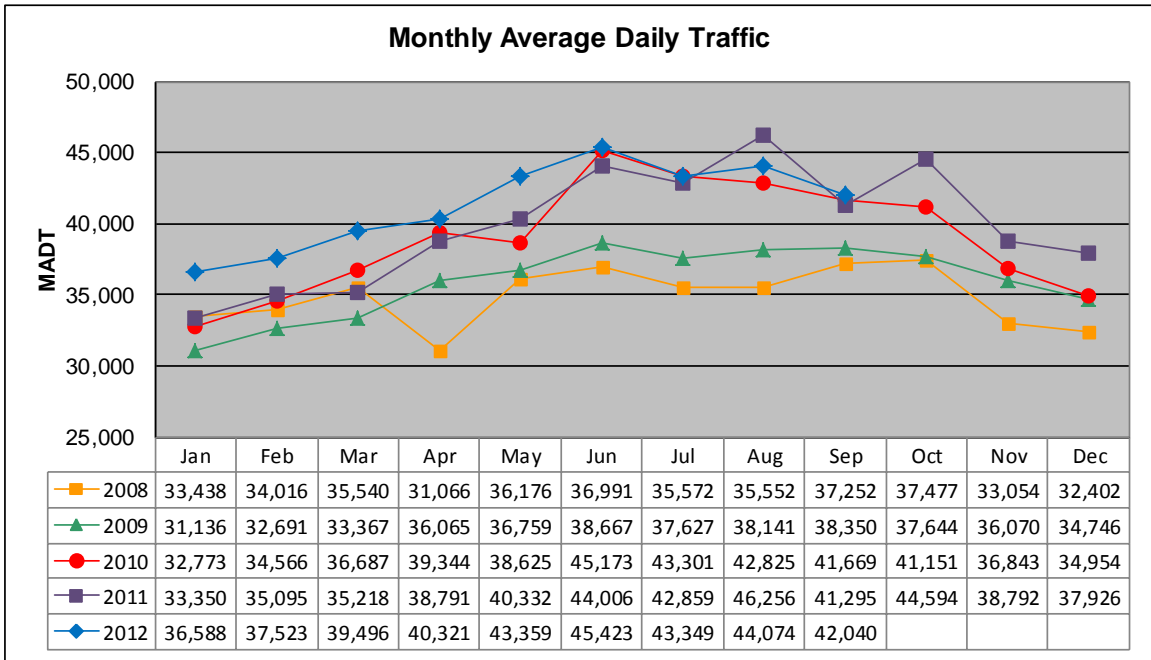


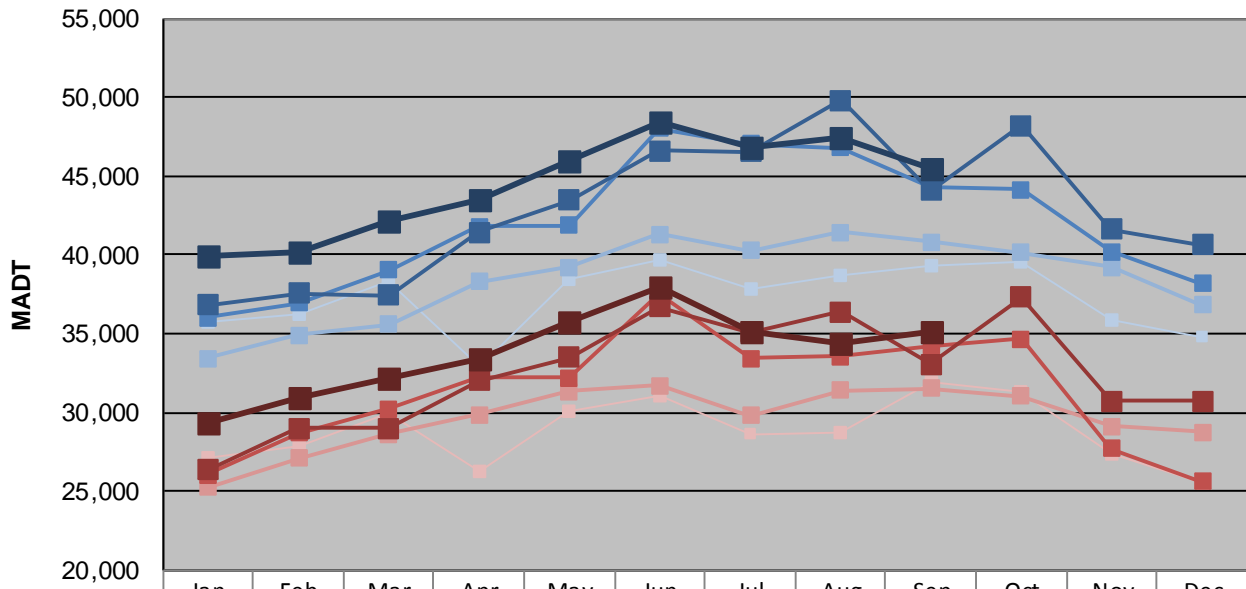
# MONTHLY REPORT, STATION NO. 365 (ATR)

## SEPTEMBER 2012

Station Measurement: VOLUME/SPEED/CLASS		
Route: TH 65	Route Direction: N/S	Lanes: 4
County: Anoka		Closest City: Ham Lake
Functional Class: Urban Other Principal Arterial		
Location: S OF CSAH116 (BUNKER LAKE BLVD NE) IN HAM LAKE		
Ref Post: 016+00.720	True Mile: 18.577	Sequence No. 9867
<b>Volume: 1,261,204</b>		<b>MADT: 42,040</b>
<b>Weekday (M-F) MADT: 45,498</b>		<b>Weekend (Sa-Su) MADT: 35,124</b>



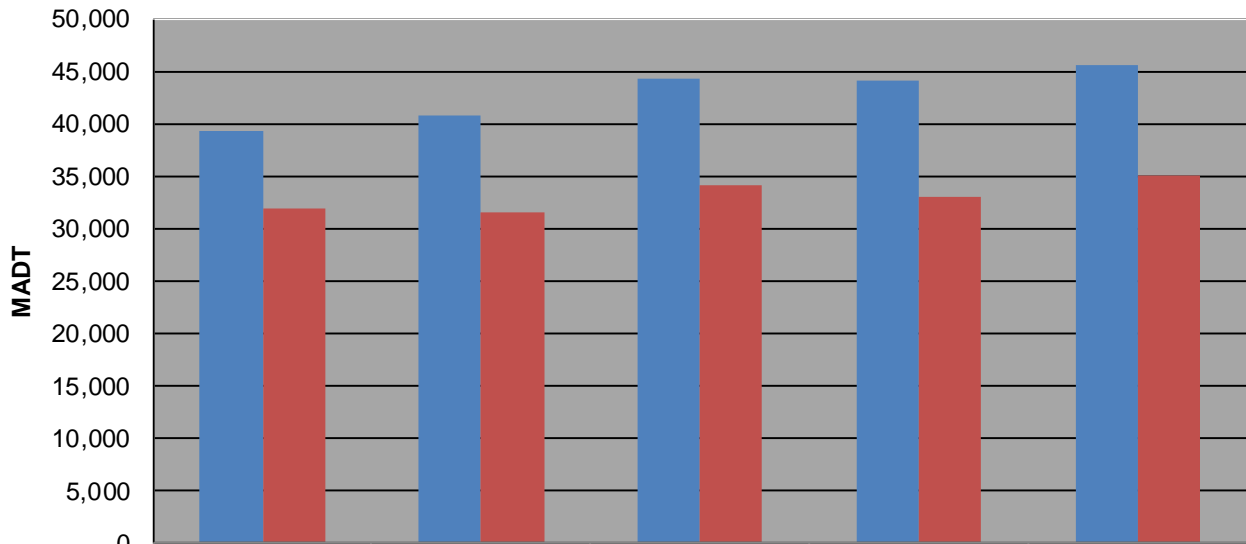
### Weekday (WD)/Weekend (WE) Monthly Average Daily Traffic



	Jan	Feb	Mar	Apr	May	Jun	Jul	Aug	Sep	Oct	Nov	Dec
'08 WD	35,716	36,262	38,328	32,902	38,408	39,726	37,888	38,732	39,298	39,546	35,906	34,790
'08 WE	27,080	27,898	29,896	26,234	30,062	31,104	28,654	28,706	31,934	31,256	27,350	25,524
'09 WD	33,424	34,926	35,580	38,298	39,244	41,302	40,264	41,404	40,818	40,142	39,222	36,796
'09 WE	25,244	27,102	28,642	29,868	31,336	31,724	29,826	31,402	31,540	31,032	29,132	28,724
'10 WD	36,034	36,924	39,010	41,822	41,868	48,006	47,042	46,804	44,334	44,120	40,218	38,142
'10 WE	26,036	28,672	30,208	32,248	32,174	37,494	33,458	33,570	34,192	34,640	27,694	25,594
'11 WD	36,790	37,530	37,430	41,426	43,440	46,626	46,548	49,798	44,102	48,184	41,630	40,606
'11 WE	26,318	28,978	28,970	32,036	33,504	36,706	35,116	36,372	33,030	37,292	30,714	30,700
'12 WD	39,874	40,144	42,202	43,512	45,912	48,398	46,794	47,378	45,498			
'12 WE	29,334	30,880	32,222	33,450	35,784	37,926	35,100	34,392	35,124			

Note: 'Weekday' defined as Monday-Friday, 'Weekend' defined as Saturday-Sunday

### Weekday/Weekend Monthly Average Daily Traffic ('08-'12)



	Sep-08	Sep-09	Sep-10	Sep-11	Sep-12
Weekday	39,298	40,818	44,334	44,102	45,498
Weekend	31,934	31,540	34,192	33,030	35,124