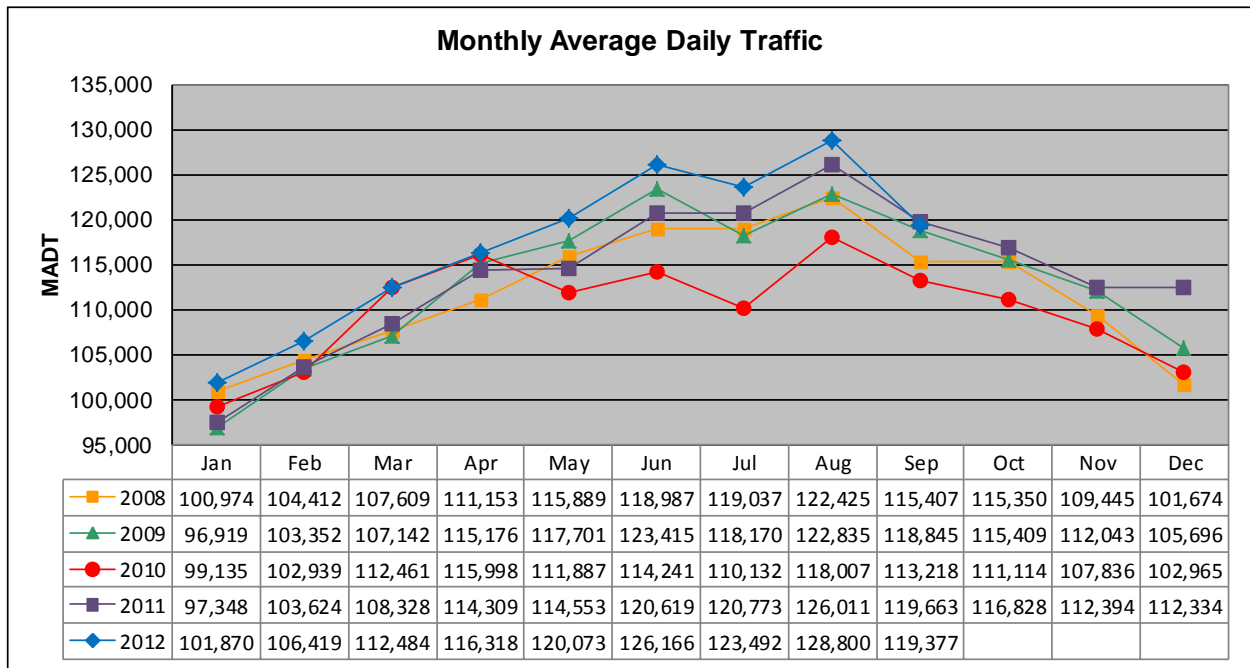


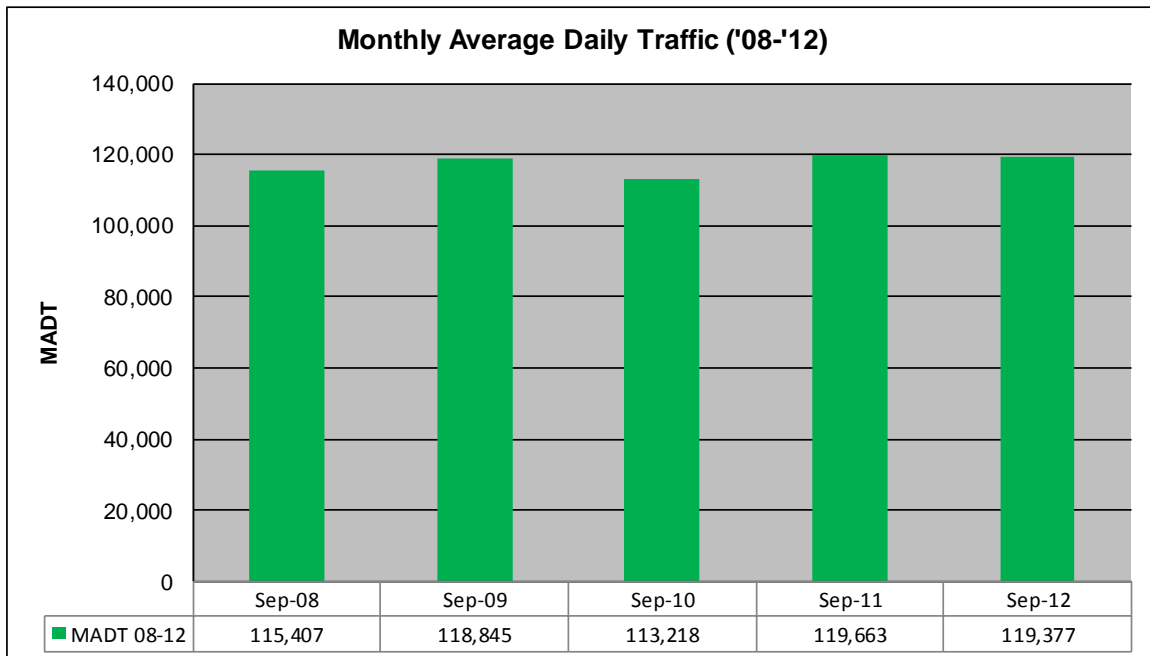
MONTHLY REPORT, STATION NO. 342 (ATR)

SEPTEMBER 2012

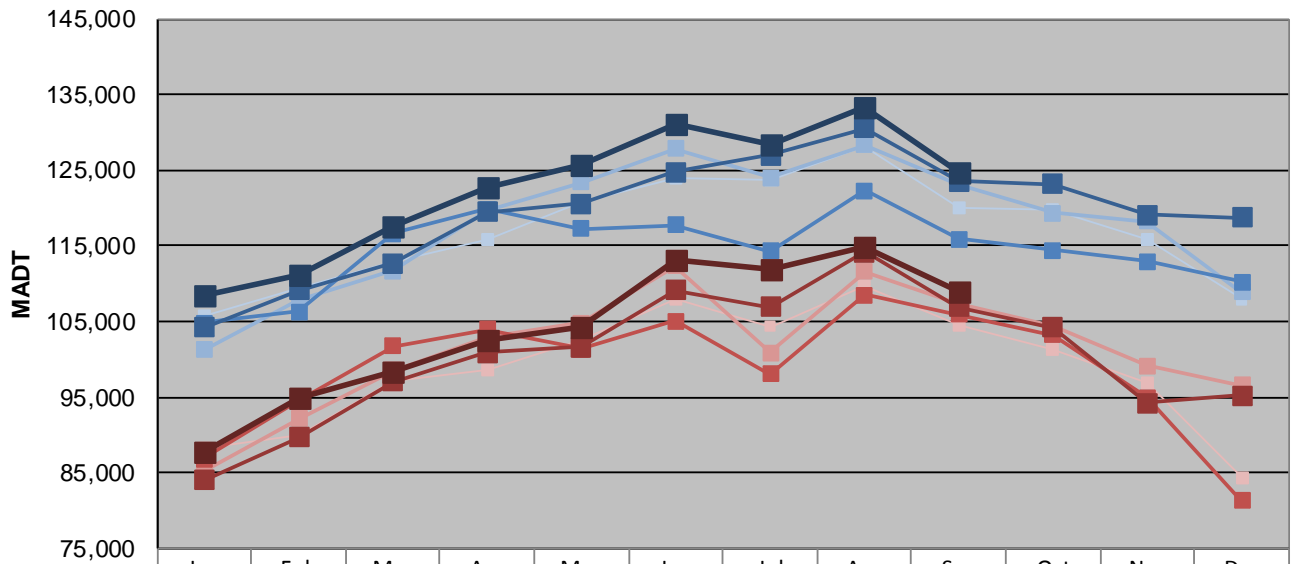
Station Measurement: VOLUME		
Route: I-94	Route Direction: E/W	Lanes: 6
County: Hennepin		Closest City: Maple Grove
Functional Class: Urban Principal Arterial - Interstate		
Location: S OF CR30 (93RD AVE N) IN MAPLE GROVE		
Ref Post: 214+00.030	True Mile: 214.71	Sequence No. 9859
Volume: 3,581,311		MADT: 119,377
Weekday (M-F) MADT: 124,590		Weekend (Sa-Su) MADT: 108,952



Note: Decrease in traffic May to July 2010 due to construction on I-94



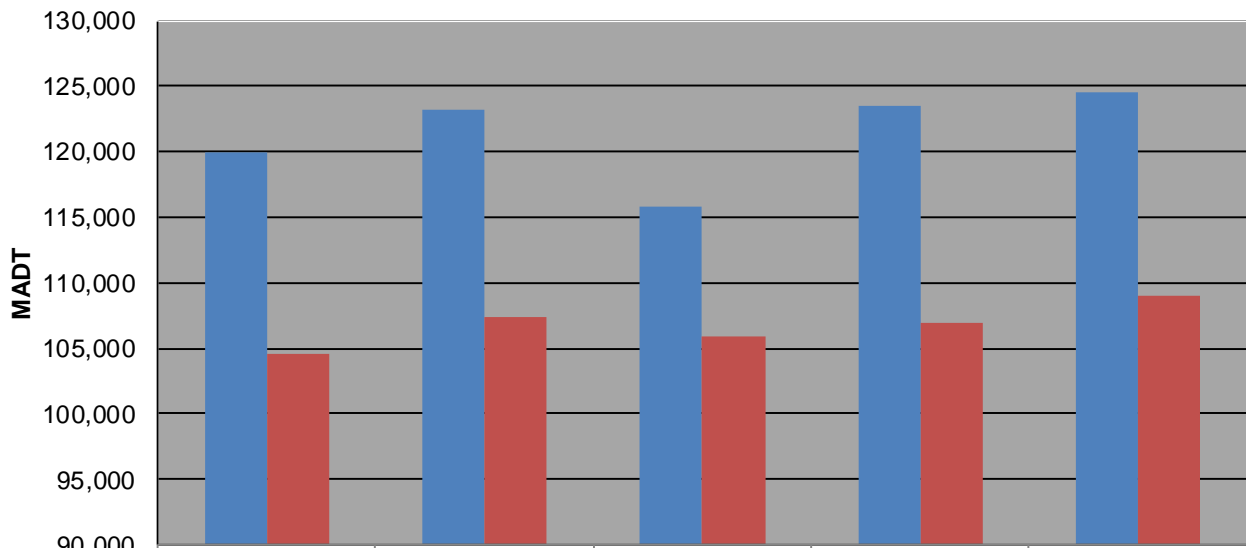
Weekday (WD)/Weekend (WE) Monthly Average Daily Traffic



	Jan	Feb	Mar	Apr	May	Jun	Jul	Aug	Sep	Oct	Nov	Dec
'08 WD	105,718	109,354	112,914	115,782	120,770	124,030	123,834	128,226	119,946	119,668	115,736	107,976
'08 WE	88,312	89,962	97,234	98,542	102,454	107,888	104,366	109,612	104,526	101,424	96,866	84,304
'09 WD	101,248	107,822	111,710	119,738	123,400	127,870	123,992	128,358	123,216	119,304	118,176	108,866
'09 WE	85,132	92,178	98,506	102,816	104,786	112,270	100,852	111,550	107,388	104,266	99,088	96,542
'10 WD	104,824	106,298	116,672	119,892	117,240	117,770	114,268	122,356	115,848	114,450	112,890	110,170
'10 WE	86,840	94,544	101,794	103,954	101,372	105,056	98,012	108,556	105,914	103,240	94,902	81,256
'11 WD	104,160	109,174	112,636	119,406	120,536	124,712	127,024	130,598	123,560	123,216	119,120	118,692
'11 WE	83,982	89,722	97,034	100,868	101,646	109,132	106,946	114,196	106,888	104,168	94,212	95,158
'12 WD	108,440	111,240	117,462	122,720	125,622	131,224	128,310	133,324	124,590			
'12 WE	87,712	94,874	98,452	102,420	104,280	113,170	111,858	114,874	108,952			

Note: 'Weekday' defined as Monday-Friday, 'Weekend' defined as Saturday-Sunday

Weekday/Weekend Monthly Average Daily Traffic ('08-'12)



	Sep-08	Sep-09	Sep-10	Sep-11	Sep-12
Weekday	119,946	123,216	115,848	123,560	124,590
Weekend	104,526	107,388	105,914	106,888	108,952