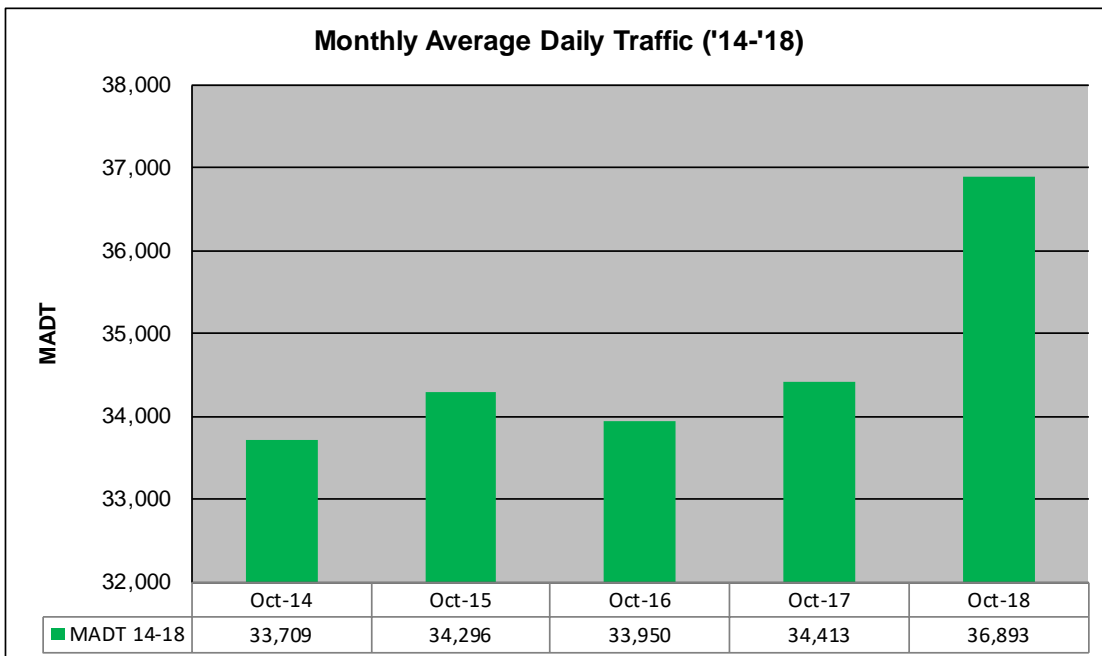
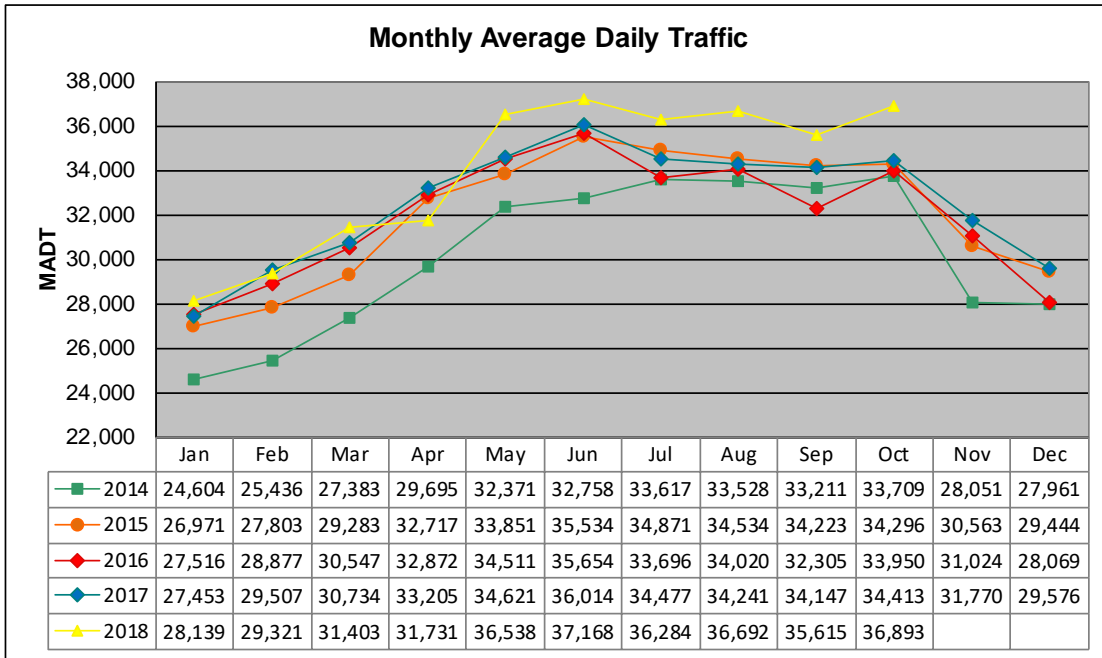


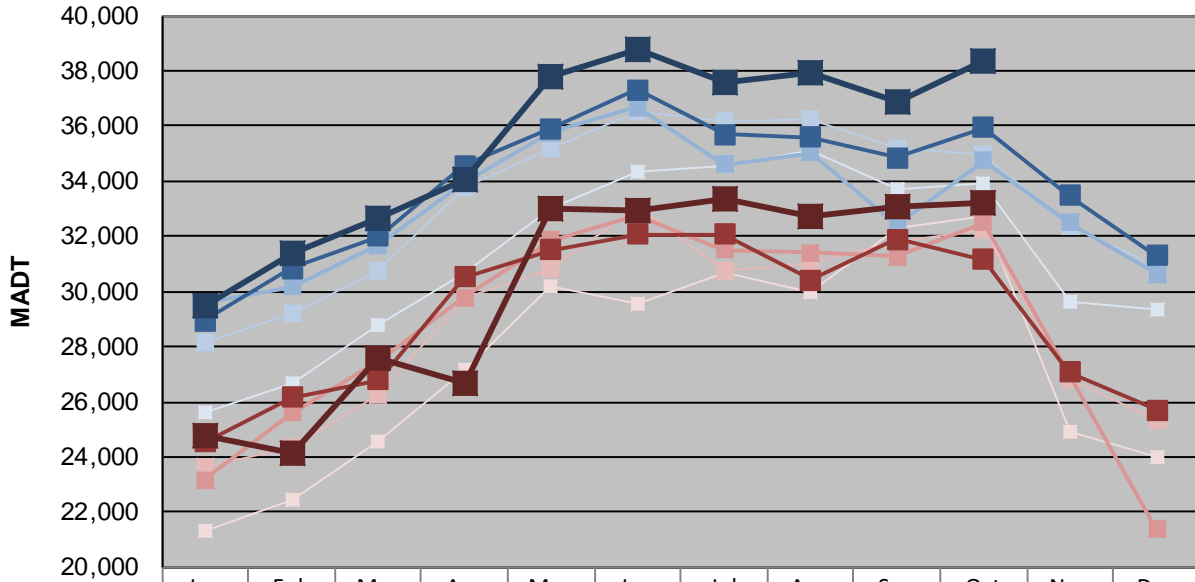
# MONTHLY REPORT, STATION NO. 42 (WIM)

## OCTOBER 2018

Station Measurement: VOLUME/SPEED/CLASS/WEIGHT		
Route: TH 61	Route Direction: N/S	Lanes: 4
County: Washington		Closest City: Cottage Grove
Functional Class: Rural Principal Arterial - Other		
Location: 0.4 MI S OF TH95 (MANNING AVE S), S OF COTTAGE GROVE		
Ref Post: 119+00.644	True Mile: 119.337	Sequence No. 11128
<b>Volume: 1,143,679</b>		<b>MADT: 36,893</b>
<b>Weekday (M-F) MADT: 38,376</b>		<b>Weekend (Sa-Su) MADT: 33,218</b>



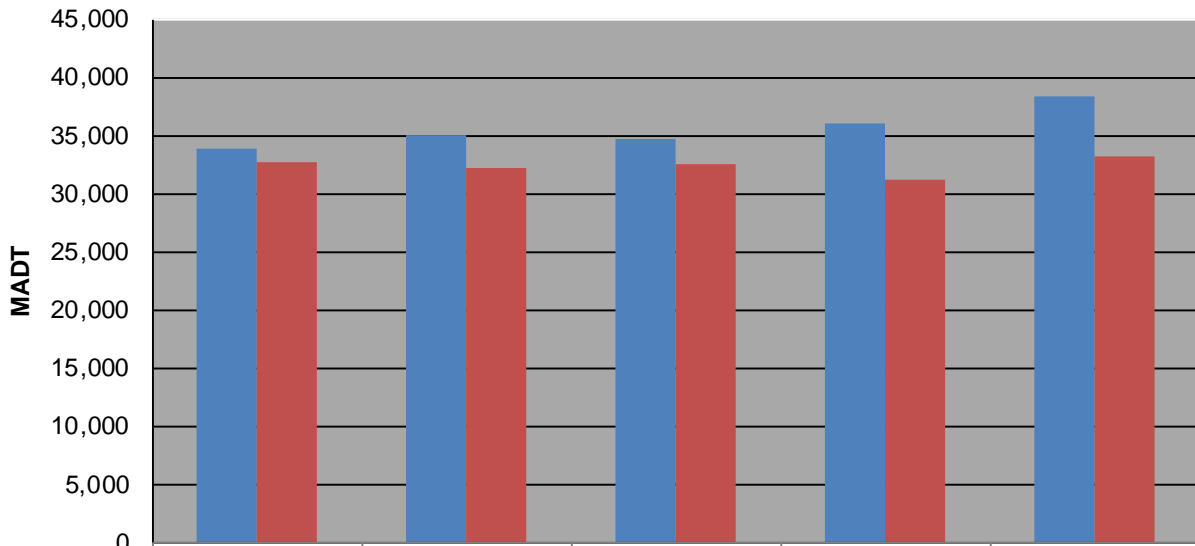
### Weekday (WD)/Weekend (WE) Monthly Average Daily Traffic



	Jan	Feb	Mar	Apr	May	Jun	Jul	Aug	Sep	Oct	Nov	Dec
'14 WD	25,582	26,636	28,816	30,648	33,028	34,312	34,554	35,102	33,682	33,924	29,622	29,342
'14 WE	21,302	22,436	24,556	27,152	30,180	29,582	30,698	30,004	32,300	32,724	24,908	23,978
'15 WD	28,138	29,190	30,766	33,784	35,150	36,520	36,184	36,266	35,152	34,950	32,342	30,880
'15 WE	23,658	24,338	26,258	29,732	30,800	33,102	30,770	31,058	31,798	32,196	26,794	25,342
'16 WD	29,558	30,162	31,686	33,948	35,778	36,672	34,594	35,038	32,402	34,736	32,482	30,614
'16 WE	23,182	25,602	27,472	29,782	31,858	32,774	31,504	31,418	31,278	32,486	27,018	21,382
'17 WD	28,946	30,848	31,998	34,556	35,904	37,306	35,692	35,584	34,848	35,958	33,486	31,290
'17 WE	24,542	26,156	26,788	30,506	31,500	32,084	32,068	30,432	31,880	31,152	27,072	25,688
'18 WD	29,476	31,392	32,642	34,082	37,756	38,766	37,604	37,922	36,890	38,376		
'18 WE	24,736	24,144	27,554	26,638	32,980	32,926	33,334	32,714	33,066	33,218		

Note: 'Weekday' defined as Monday-Friday, 'Weekend' defined as Saturday-Sunday

### Weekday/Weekend Monthly Average Daily Traffic ('14-'18)



	Oct-14	Oct-15	Oct-16	Oct-17	Oct-18
Weekday	33,924	34,950	34,736	35,958	38,376
Weekend	32,724	32,196	32,486	31,152	33,218