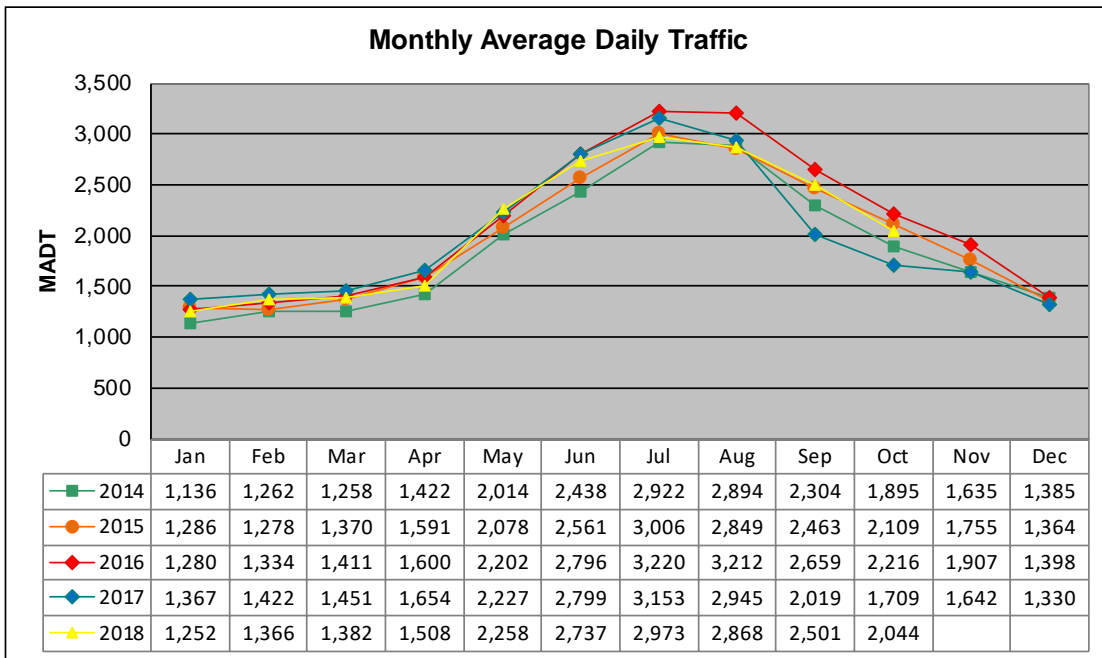


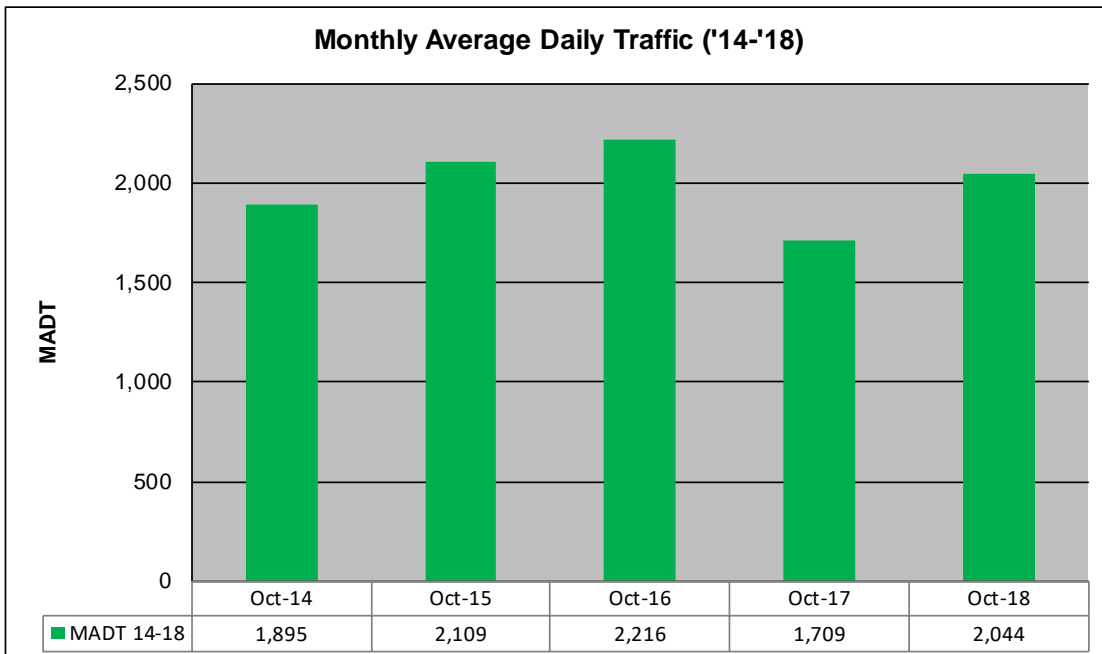
# MONTHLY REPORT, STATION NO. 220 (ATR)

## OCTOBER 2018

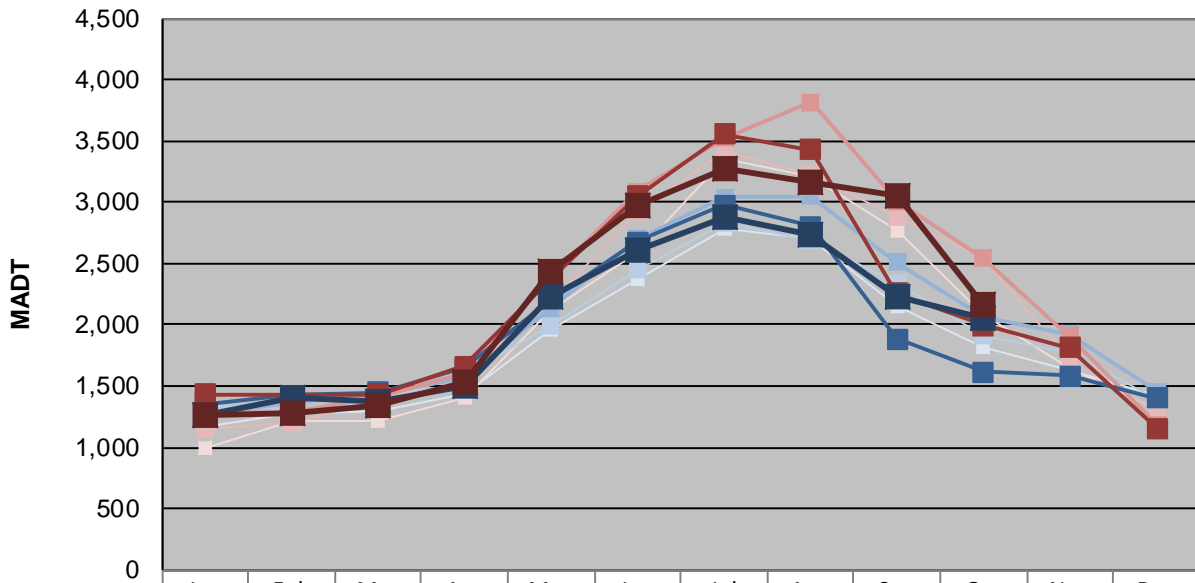
Station Measurement: VOLUME/SPEED/CLASS		
Route: TH 71	Route Direction: N/S	Lanes: 2
County: Hubbard	Closest City: Park Rapids	
Functional Class: Rural Principal Arterial - Other		
Location: S OF CR89, N OF PARK RAPIDS		
Ref Post: 275+00.062	True Mile: 275.098	Sequence No. 6727
<b>Volume: 63,364</b>		<b>MADT: 2,044</b>
<b>Weekday (M-F) MADT: 2,062</b>		<b>Weekend (Sa-Su) MADT: 2,166</b>



Note: Increase in traffic August 2016 due to detour... Decrease in traffic September/October 2017 due to construction on TH 71



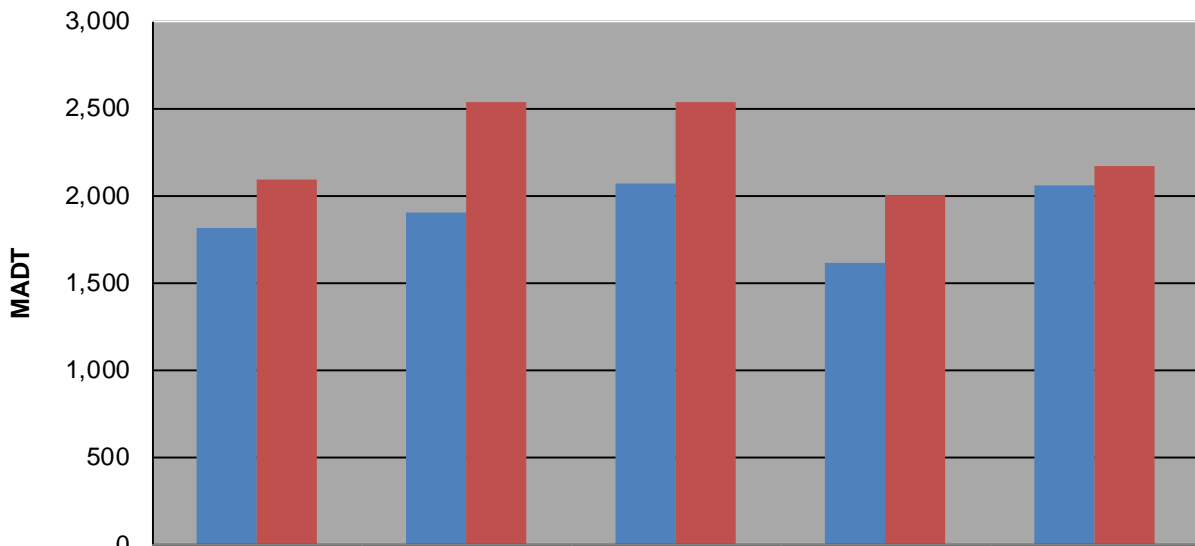
### Weekday (WD)/Weekend (WE) Monthly Average Daily Traffic



	Jan	Feb	Mar	Apr	May	Jun	Jul	Aug	Sep	Oct	Nov	Dec
'14 WD	1,174	1,280	1,290	1,440	1,954	2,374	2,784	2,706	2,146	1,810	1,634	1,420
'14 WE	996	1,220	1,210	1,408	2,116	2,600	3,358	3,208	2,770	2,090	1,638	1,316
'15 WD	1,338	1,310	1,372	1,590	1,998	2,450	2,834	2,682	2,344	1,908	1,772	1,396
'15 WE	1,148	1,198	1,396	1,600	2,186	2,920	3,416	3,222	2,872	2,538	1,712	1,294
'16 WD	1,268	1,360	1,424	1,576	2,140	2,702	3,044	3,046	2,512	2,068	1,928	1,458
'16 WE	1,280	1,280	1,408	1,602	2,390	3,086	3,522	3,816	3,006	2,540	1,906	1,190
'17 WD	1,356	1,422	1,448	1,648	2,208	2,674	2,978	2,800	1,886	1,612	1,588	1,400
'17 WE	1,430	1,422	1,436	1,666	2,384	3,052	3,554	3,432	2,258	1,998	1,814	1,156
'18 WD	1,262	1,404	1,378	1,506	2,232	2,614	2,886	2,734	2,222	2,062		
'18 WE	1,266	1,274	1,338	1,528	2,430	2,968	3,270	3,166	3,058	2,166		

Note: 'Weekday' defined as Monday-Friday, 'Weekend' defined as Saturday-Sunday

### Weekday/Weekend Monthly Average Daily Traffic ('14-'18)



	Oct-14	Oct-15	Oct-16	Oct-17	Oct-18
Weekday	1,810	1,908	2,068	1,612	2,062
Weekend	2,090	2,538	2,540	1,998	2,166