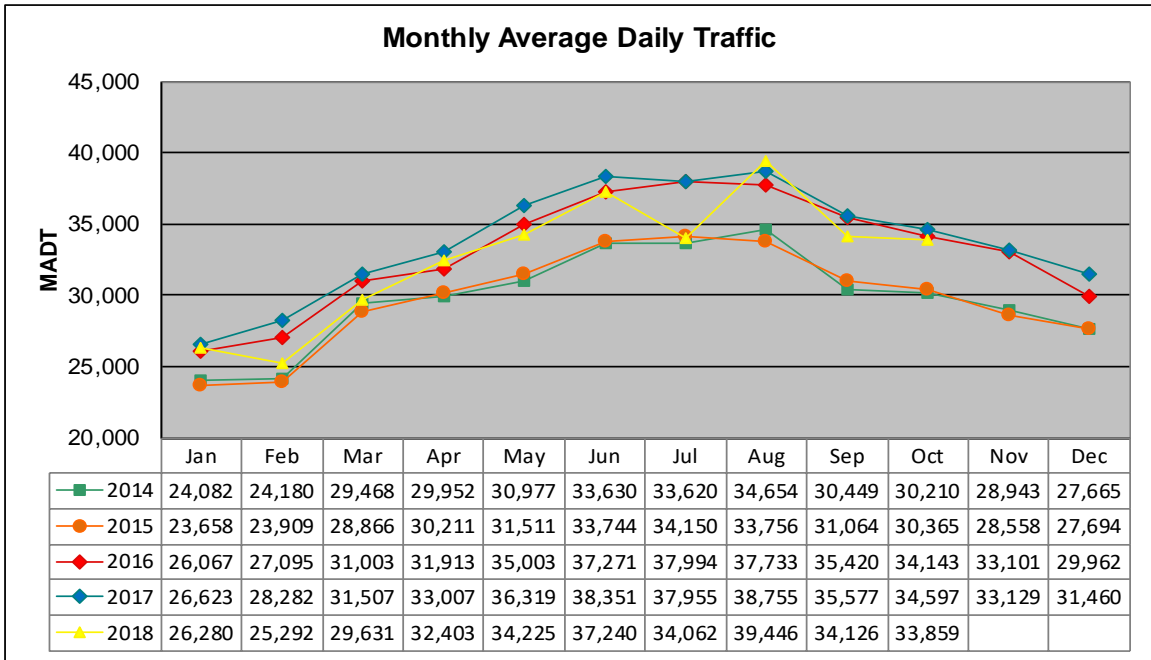


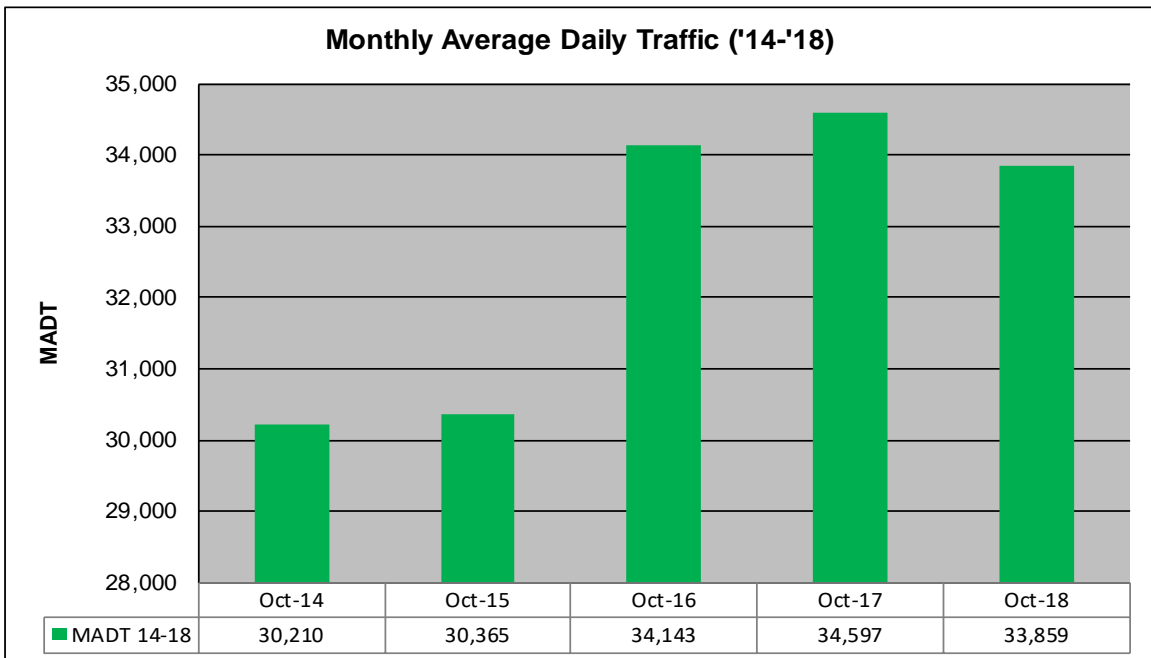
MONTHLY REPORT, STATION NO. 208 (ATR)

OCTOBER 2018

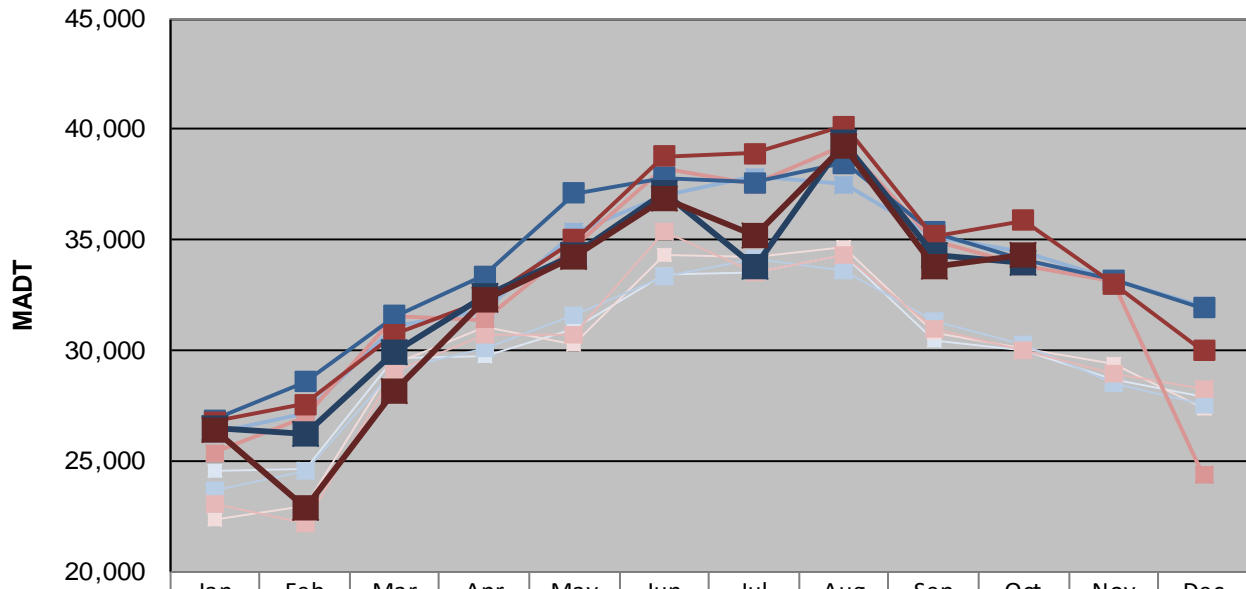
Station Measurement: VOLUME/SPEED/CLASS		
Route: I-35	Route Direction: N/S	Lanes: 4
County: Steele		Closest City: Owatonna
Functional Class: Urban Principal Arterial - Interstate		
Location: .6 MI N OF CSAH9, N OF OWATONNA		
Ref Post: 046+00.100	True Mile: 45.919	Sequence No. 9832
Volume: 1,049,626		MADT: 33,859
Weekday (M-F) MADT: 34,010		Weekend (Sa-Su) MADT: 34,318



Note: Decrease in traffic July 2018 due to construction in the area



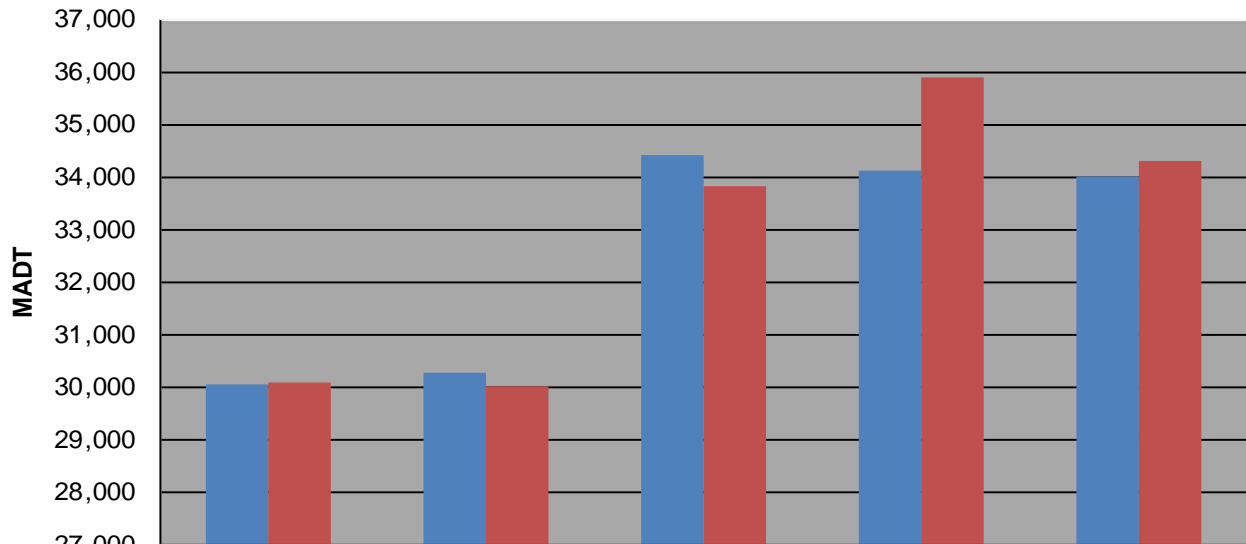
Weekday (WD)/Weekend (WE) Monthly Average Daily Traffic



	Jan	Feb	Mar	Apr	May	Jun	Jul	Aug	Sep	Oct	Nov	Dec
'14 WD	24,536	24,666	29,642	29,738	30,986	33,430	33,508	34,292	30,488	30,046	28,704	27,942
'14 WE	22,320	22,966	29,378	31,080	30,264	34,298	34,192	34,690	30,806	30,090	29,424	27,340
'15 WD	23,700	24,592	29,120	30,092	31,582	33,392	34,164	33,588	31,364	30,278	28,498	27,518
'15 WE	23,060	22,204	29,054	30,744	30,688	35,402	33,496	34,318	30,962	30,028	28,982	28,254
'16 WD	26,262	27,176	31,094	31,852	35,354	36,970	37,838	37,508	35,162	34,420	33,212	32,022
'16 WE	25,364	27,016	31,528	31,392	34,674	38,204	37,512	39,280	35,010	33,816	33,126	24,372
'17 WD	26,866	28,560	31,560	33,396	37,106	37,832	37,592	38,476	35,356	34,136	33,190	31,914
'17 WE	26,760	27,586	30,716	32,228	35,014	38,770	38,906	40,158	35,190	35,884	33,016	29,996
'18 WD	26,492	26,254	29,964	32,468	34,336	37,168	33,786	39,394	34,308	34,010		
'18 WE	26,360	22,890	28,142	32,336	34,256	36,878	35,222	39,202	33,766	34,318		

Note: 'Weekday' defined as Monday-Friday, 'Weekend' defined as Saturday-Sunday

Weekday/Weekend Monthly Average Daily Traffic ('14-'18)



	Oct-14	Oct-15	Oct-16	Oct-17	Oct-18
Weekday	30,046	30,278	34,420	34,136	34,010
Weekend	30,090	30,028	33,816	35,884	34,318