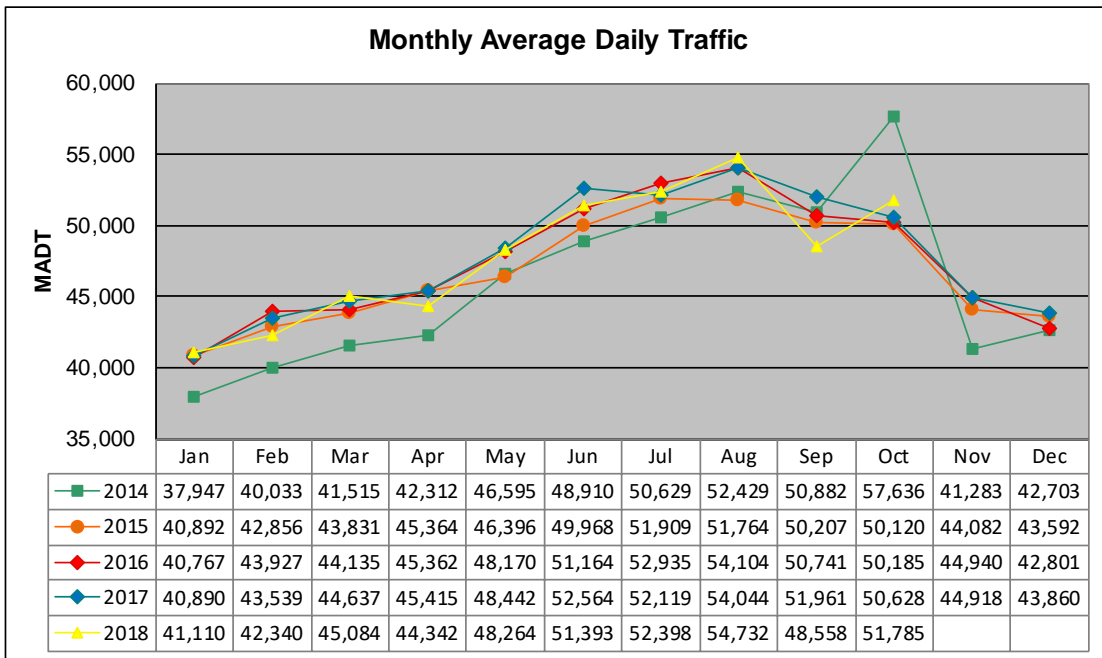


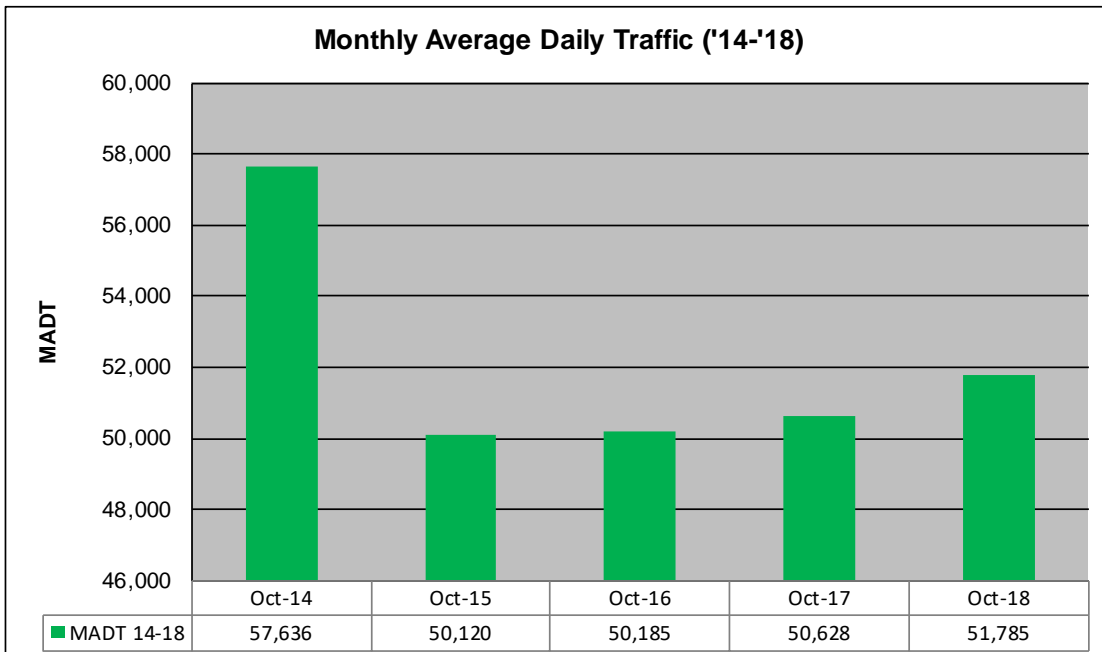
# MONTHLY REPORT, STATION NO. 103 (ATR)

## OCTOBER 2018

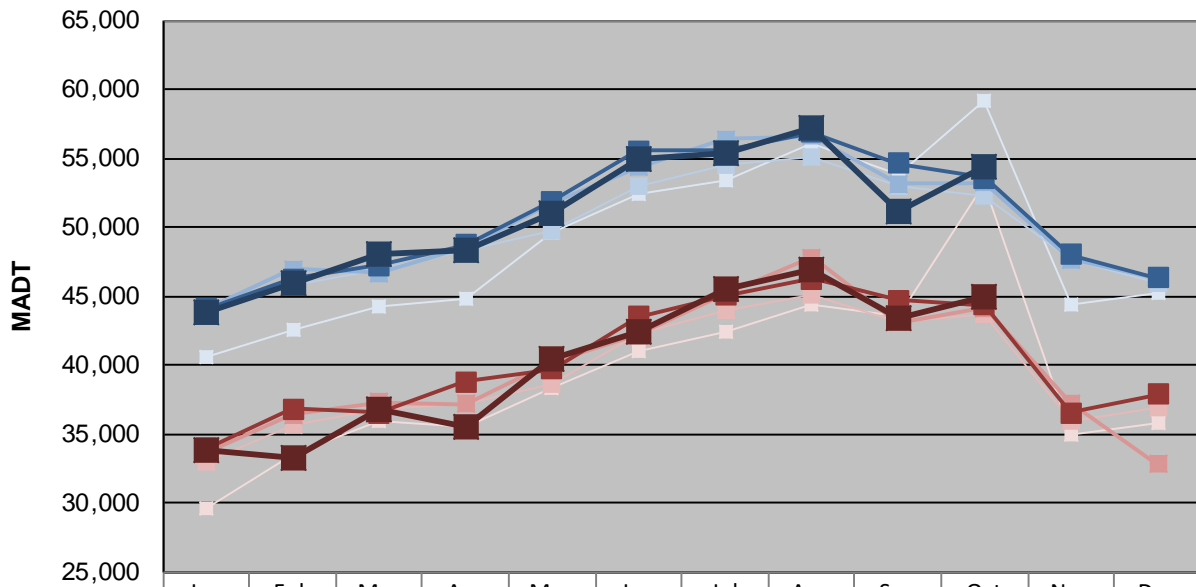
|   |                      |                                     |
|---|----------------------|-------------------------------------|
| Station Measurement: VOLUME/SPEED/CLASS                 |                      |                                     |
| Route: I-35   | Route Direction: N/S | Lanes: 4                            |
| County: St Louis  |                      | Closest City: Duluth                |
| Functional Class: Urban Principal Arterial - Interstate |                      |                                     |
| Location: E OF MSAS107 (CENTRAL AVE) IN DULUTH          |                      |                                     |
| Ref Post: 252+00.600                                    | True Mile: 252.622   | Sequence No. 9825                   |
| <b>Volume: 1,605,334</b>                                |                      | <b>MADT: 51,785</b>                 |
| <b>Weekday (M-F) MADT: 54,420</b>                       |                      | <b>Weekend (Sa-Su) MADT: 44,988</b> |



Note: Increase in traffic October 2014 due to detour from bridge construction... Decrease in traffic September 2018 due to construction on I-35



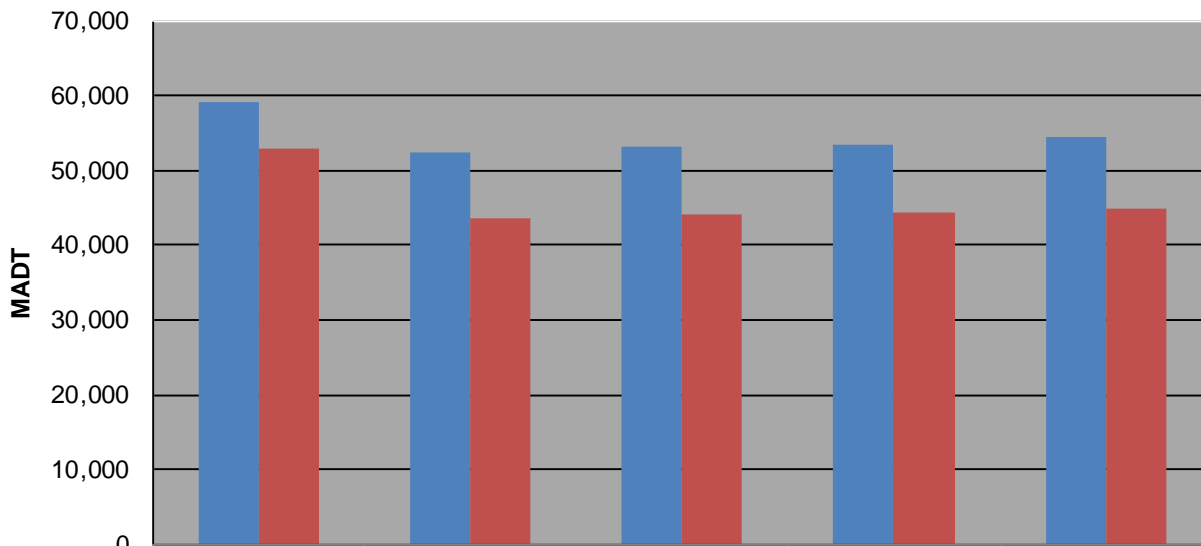
### Weekday (WD)/Weekend (WE) Monthly Average Daily Traffic



|        | Jan    | Feb    | Mar    | Apr    | May    | Jun    | Jul    | Aug    | Sep    | Oct    | Nov    | Dec    |
|--------|--------|--------|--------|--------|--------|--------|--------|--------|--------|--------|--------|--------|
| '14 WD | 40,588 | 42,604 | 44,234 | 44,874 | 49,584 | 52,376 | 53,402 | 56,076 | 53,756 | 59,124 | 44,412 | 45,260 |
| '14 WE | 29,680 | 33,606 | 35,954 | 35,482 | 38,336 | 41,080 | 42,448 | 44,324 | 43,532 | 53,056 | 35,030 | 35,754 |
| '15 WD | 43,888 | 45,732 | 46,962 | 48,376 | 49,790 | 52,996 | 54,478 | 55,106 | 53,022 | 52,334 | 47,566 | 45,986 |
| '15 WE | 33,054 | 35,664 | 36,858 | 37,162 | 38,676 | 42,294 | 43,988 | 45,078 | 43,146 | 43,662 | 36,016 | 36,982 |
| '16 WD | 44,110 | 46,928 | 46,654 | 48,492 | 51,738 | 54,366 | 56,398 | 56,632 | 53,130 | 53,204 | 47,672 | 46,314 |
| '16 WE | 33,604 | 36,390 | 37,310 | 37,162 | 40,312 | 42,190 | 45,136 | 47,824 | 43,112 | 44,170 | 37,224 | 32,810 |
| '17 WD | 44,106 | 46,232 | 47,240 | 48,732 | 51,856 | 55,550 | 55,562 | 56,896 | 54,622 | 53,574 | 47,990 | 46,360 |
| '17 WE | 33,934 | 36,808 | 36,568 | 38,780 | 39,698 | 43,496 | 45,066 | 46,260 | 44,724 | 44,326 | 36,564 | 37,904 |
| '18 WD | 43,812 | 45,982 | 48,064 | 48,382 | 51,048 | 54,950 | 55,382 | 57,230 | 51,112 | 54,420 |        |        |
| '18 WE | 33,896 | 33,236 | 36,860 | 35,574 | 40,400 | 42,484 | 45,542 | 46,970 | 43,452 | 44,988 |        |        |

Note: 'Weekday' defined as Monday-Friday, 'Weekend' defined as Saturday-Sunday

### Weekday/Weekend Monthly Average Daily Traffic ('14-'18)



|         | Oct-14 | Oct-15 | Oct-16 | Oct-17 | Oct-18 |
|---------|--------|--------|--------|--------|--------|
| Weekday | 59,124 | 52,334 | 53,204 | 53,574 | 54,420 |
| Weekend | 53,056 | 43,662 | 44,170 | 44,326 | 44,988 |