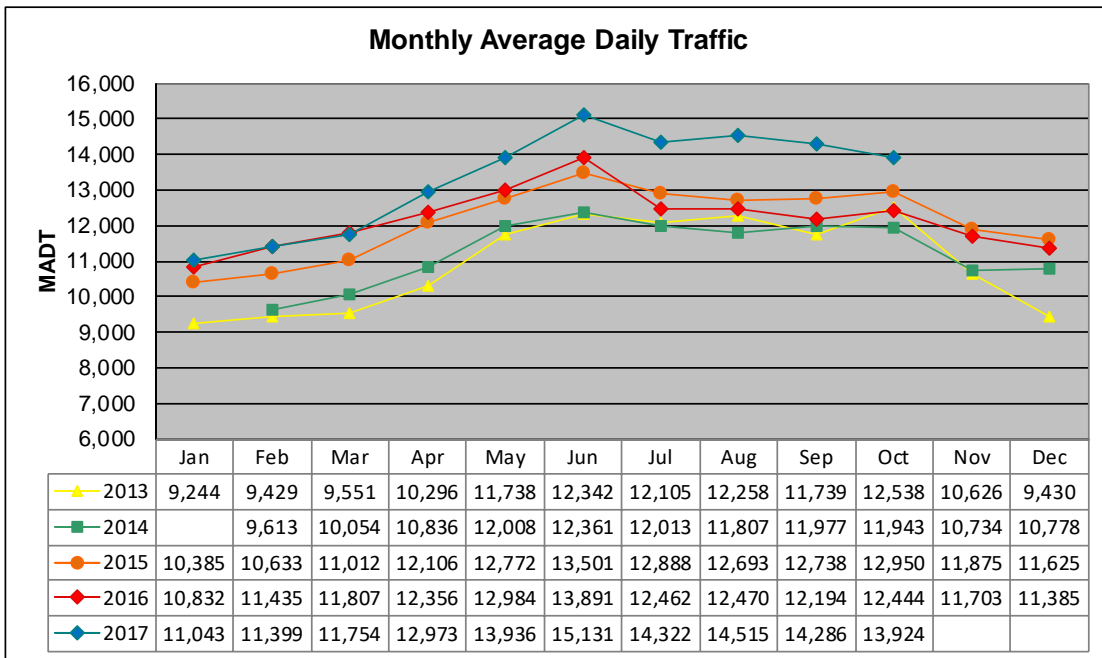
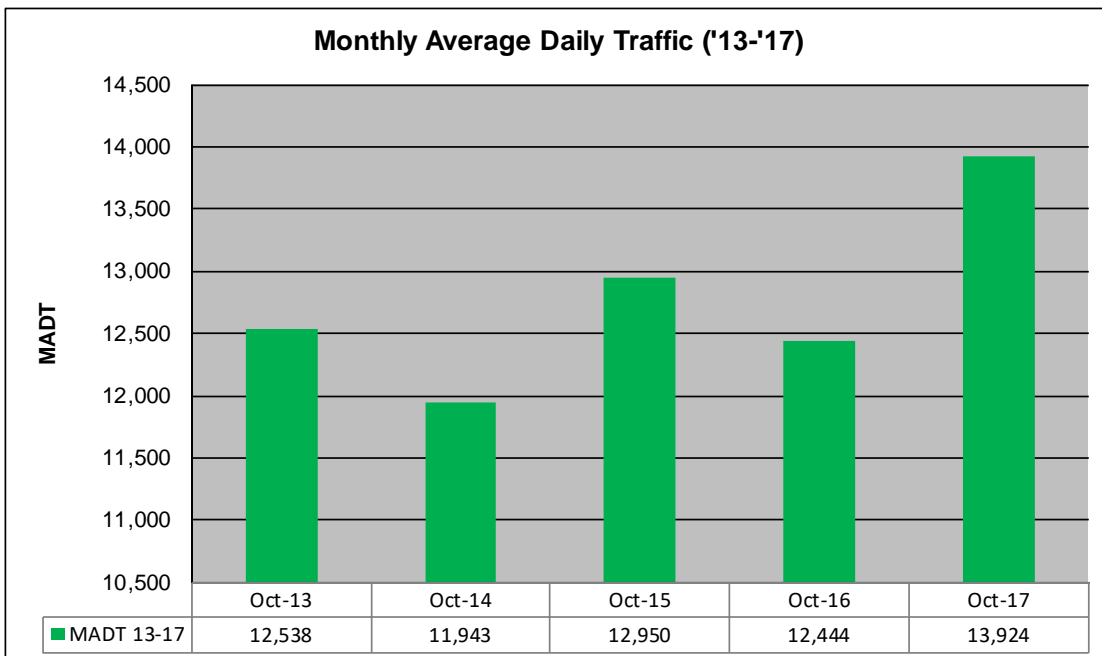


MONTHLY REPORT, STATION NO. 45 (WIM) OCTOBER 2017

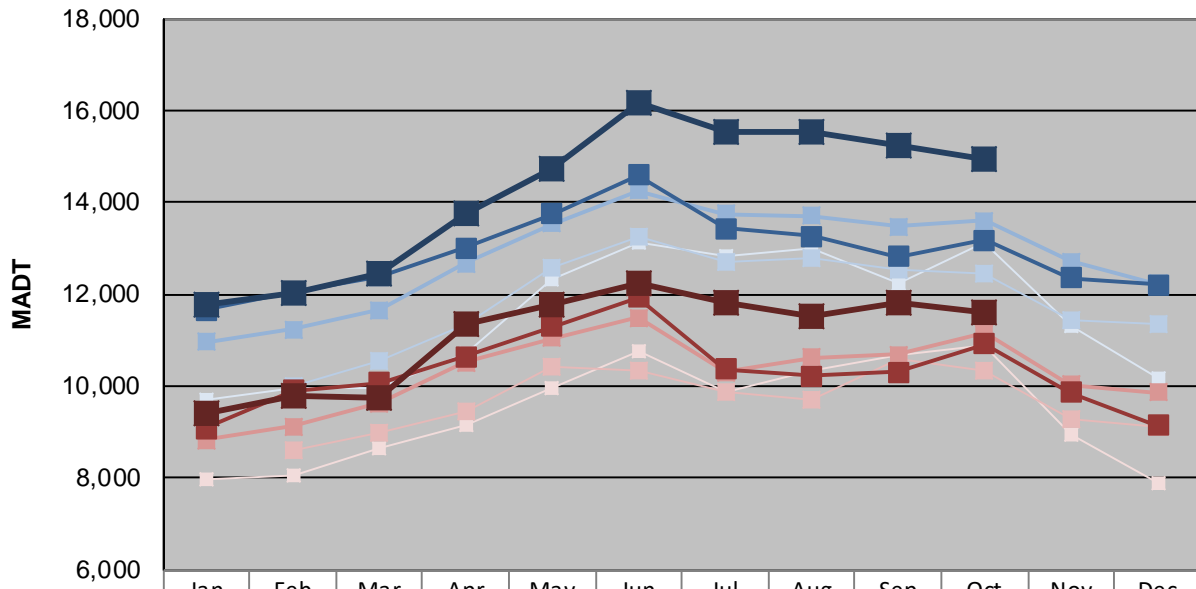
| | | |
|--|----------------------|-------------------------------------|
| Station Measurement: VOLUME/SPEED/CLASS/WEIGHT | | |
| Route: CSAH 14 | Route Direction: E/W | Lanes: 2 |
| County: Anoka | Closest City: Blaine | |
| Functional Class: Urban Other Principal Arterial | | |
| Location: .7 MI W OF CSAH17 (LEXINGTON AVE NE) IN BLAINE | | |
| Ref Post: 010+00.100 | True Mile: 10.1 | Sequence No. 9893 |
| Volume: 431,651 | | MADT: 13,924 |
| Weekday (M-F) MADT: 11,588 | | Weekend (Sa-Su) MADT: 11,588 |



Note: No data January 2014 due to site issues... Volume data reported as ATR 422 during 2013



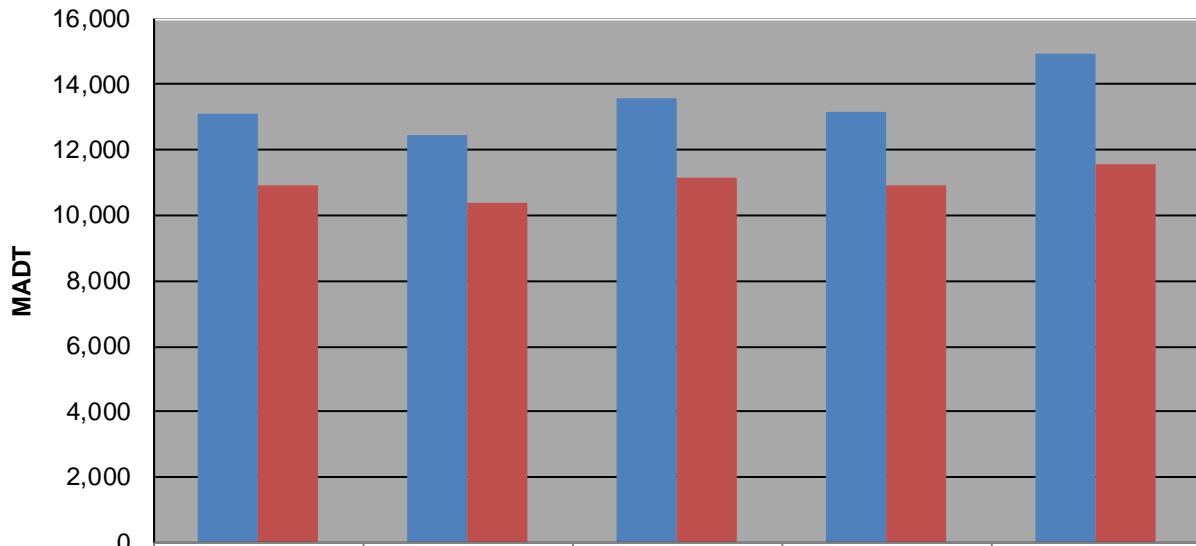
Weekday (WD)/Weekend (WE) Monthly Average Daily Traffic



| | Jan | Feb | Mar | Apr | May | Jun | Jul | Aug | Sep | Oct | Nov | Dec |
|--------|--------|--------|--------|--------|--------|--------|--------|--------|--------|--------|--------|--------|
| '13 WD | 9,708 | 9,970 | 9,940 | 10,716 | 12,308 | 13,132 | 12,832 | 12,986 | 12,260 | 13,110 | 11,294 | 10,152 |
| '13 WE | 7,966 | 8,080 | 8,666 | 9,166 | 9,950 | 10,762 | 9,880 | 10,352 | 10,678 | 10,892 | 8,954 | 7,908 |
| '14 WD | | 10,014 | 10,566 | 11,346 | 12,570 | 13,270 | 12,710 | 12,786 | 12,538 | 12,468 | 11,452 | 11,352 |
| '14 WE | | 8,614 | 9,008 | 9,434 | 10,410 | 10,356 | 9,862 | 9,724 | 10,576 | 10,356 | 9,302 | 9,128 |
| '15 WD | 10,972 | 11,240 | 11,650 | 12,678 | 13,544 | 14,254 | 13,754 | 13,700 | 13,478 | 13,608 | 12,712 | 12,232 |
| '15 WE | 8,836 | 9,116 | 9,632 | 10,530 | 11,044 | 11,498 | 10,312 | 10,630 | 10,686 | 11,144 | 10,032 | 9,862 |
| '16 WD | 11,670 | 12,042 | 12,406 | 13,004 | 13,748 | 14,588 | 13,436 | 13,260 | 12,826 | 13,182 | 12,360 | 12,206 |
| '16 WE | 9,076 | 9,912 | 10,076 | 10,640 | 11,308 | 11,940 | 10,364 | 10,216 | 10,310 | 10,928 | 9,856 | 9,150 |
| '17 WD | 11,788 | 12,046 | 12,434 | 13,780 | 14,742 | 16,164 | 15,544 | 15,548 | 15,254 | 14,962 | | |
| '17 WE | 9,432 | 9,784 | 9,730 | 11,356 | 11,790 | 12,256 | 11,810 | 11,504 | 11,810 | 11,588 | | |

Note: 'Weekday' defined as Monday-Friday, 'Weekend' defined as Saturday-Sunday

Weekday/Weekend Monthly Average Daily Traffic ('13-'17)



| | Oct-13 | Oct-14 | Oct-15 | Oct-16 | Oct-17 |
|---------|--------|--------|--------|--------|--------|
| Weekday | 13,110 | 12,468 | 13,608 | 13,182 | 14,962 |
| Weekend | 10,892 | 10,356 | 11,144 | 10,928 | 11,588 |