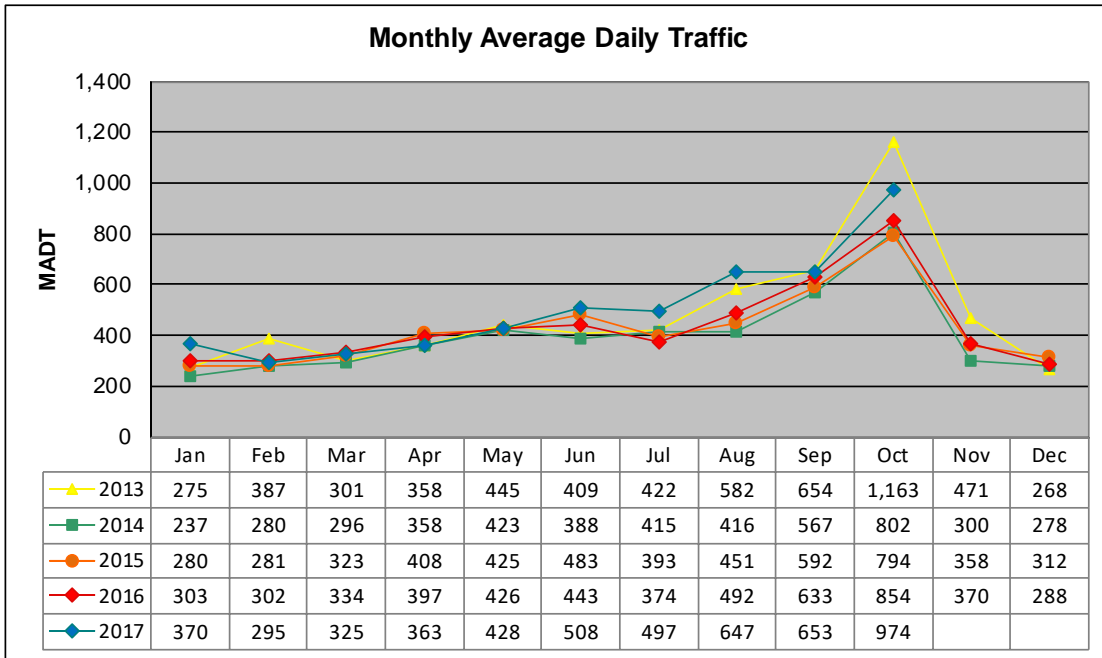


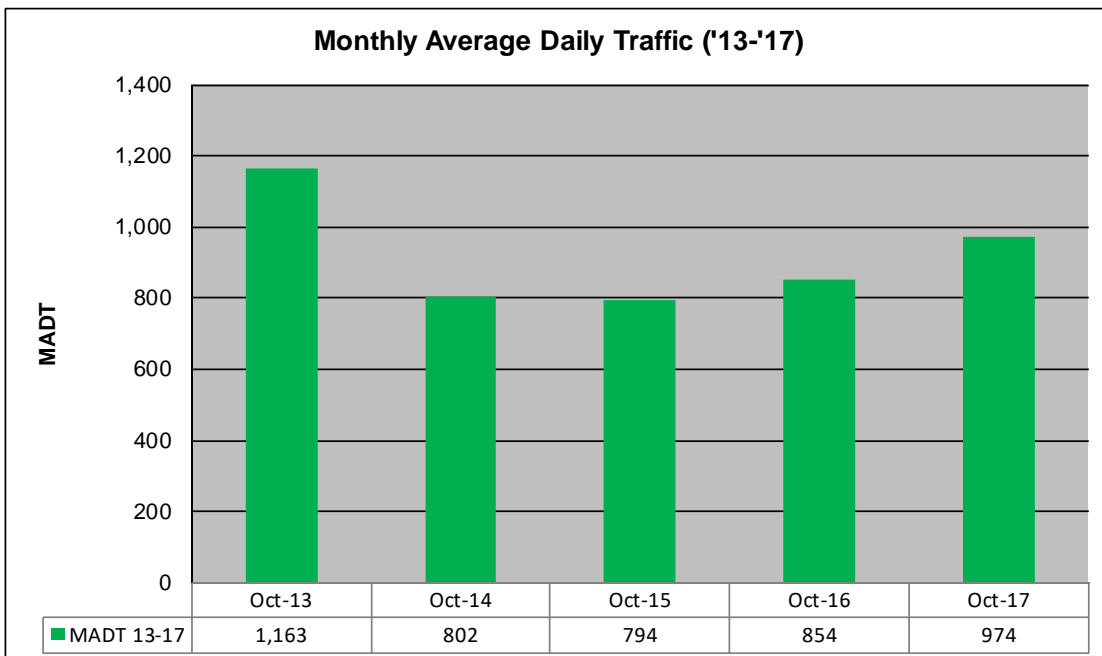
MONTHLY REPORT, STATION NO. 41 (WIM)

OCTOBER 2017

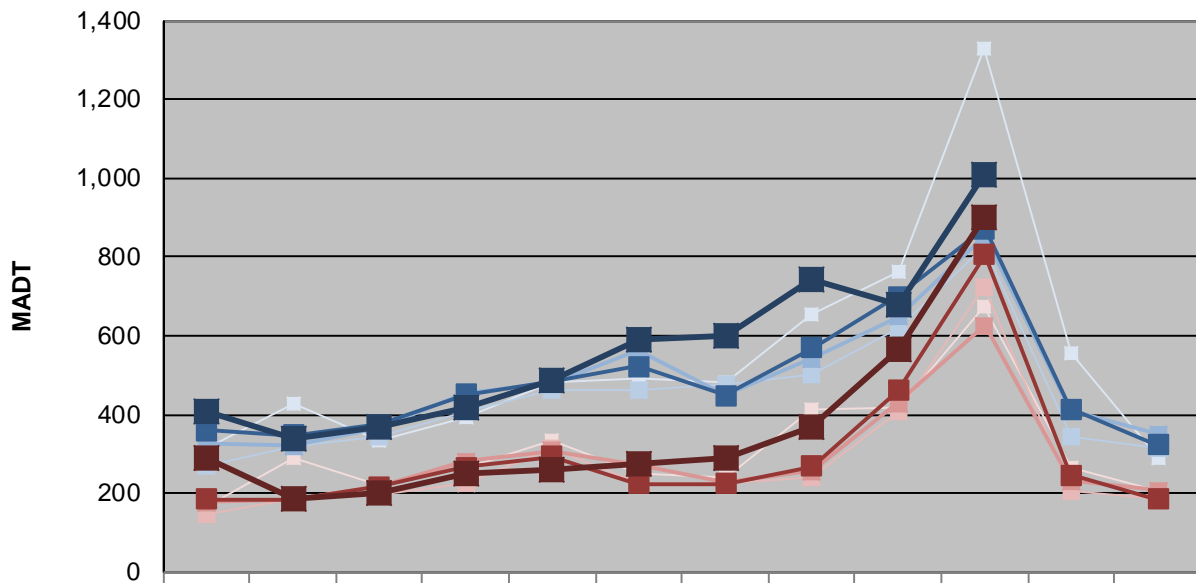
| | | |
|--|-------------------------|----------------------------------|
| Station Measurement: VOLUME/SPEED/CLASS/WEIGHT | | |
| Route: CSAH 14 | Route Direction: N/S | Lanes: 2 |
| County: Polk | Closest City: Crookston | |
| Functional Class: Rural Major Collector | | |
| Location: 1.3 MI N OF CSAH45, S OF CROOKSTON | | |
| Ref Post: 014+00.850 | True Mile: 14.85 | Sequence No. 9817 |
| Volume: 30,196 | | MADT: 974 |
| Weekday (M-F) MADT: 1,008 | | Weekend (Sa-Su) MADT: 898 |



Note: Increase in traffic during Octobers due to beet harvesting



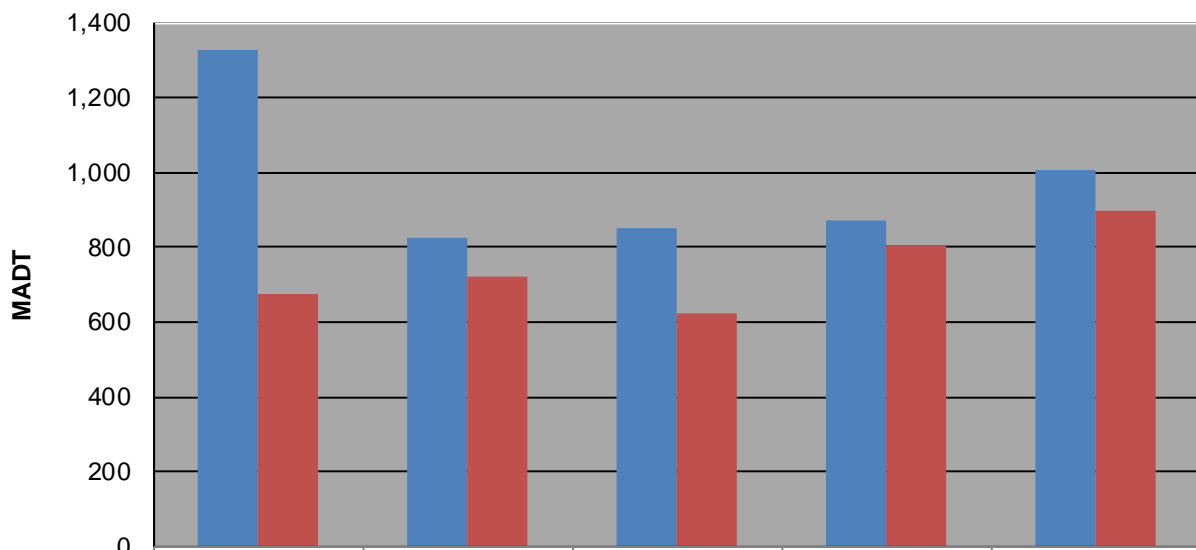
Weekday (WD)/Weekend (WE) Monthly Average Daily Traffic



| | Jan | Feb | Mar | Apr | May | Jun | Jul | Aug | Sep | Oct | Nov | Dec |
|--------|-----|-----|-----|-----|-----|-----|-----|-----|-----|-------|-----|-----|
| '13 WD | 312 | 426 | 336 | 392 | 480 | 490 | 482 | 652 | 764 | 1,330 | 558 | 292 |
| '13 WE | 166 | 290 | 222 | 264 | 334 | 250 | 238 | 412 | 416 | 674 | 266 | 208 |
| '14 WD | 270 | 320 | 346 | 408 | 464 | 460 | 478 | 502 | 622 | 828 | 346 | 312 |
| '14 WE | 148 | 184 | 196 | 224 | 314 | 224 | 228 | 238 | 408 | 722 | 208 | 188 |
| '15 WD | 326 | 320 | 368 | 454 | 480 | 564 | 452 | 542 | 648 | 854 | 410 | 350 |
| '15 WE | 178 | 184 | 220 | 280 | 308 | 270 | 226 | 256 | 430 | 626 | 232 | 206 |
| '16 WD | 360 | 348 | 374 | 450 | 484 | 522 | 448 | 568 | 700 | 872 | 414 | 324 |
| '16 WE | 186 | 184 | 216 | 266 | 294 | 224 | 224 | 268 | 460 | 806 | 246 | 186 |
| '17 WD | 410 | 340 | 370 | 420 | 488 | 592 | 598 | 742 | 680 | 1,008 | | |
| '17 WE | 288 | 184 | 202 | 250 | 262 | 276 | 288 | 368 | 566 | 898 | | |

Note: 'Weekday' defined as Monday-Friday, 'Weekend' defined as Saturday-Sunday

Weekday/Weekend Monthly Average Daily Traffic ('13-'17)



| | Oct-13 | Oct-14 | Oct-15 | Oct-16 | Oct-17 |
|---------|--------|--------|--------|--------|--------|
| Weekday | 1,330 | 828 | 854 | 872 | 1,008 |
| Weekend | 674 | 722 | 626 | 806 | 898 |