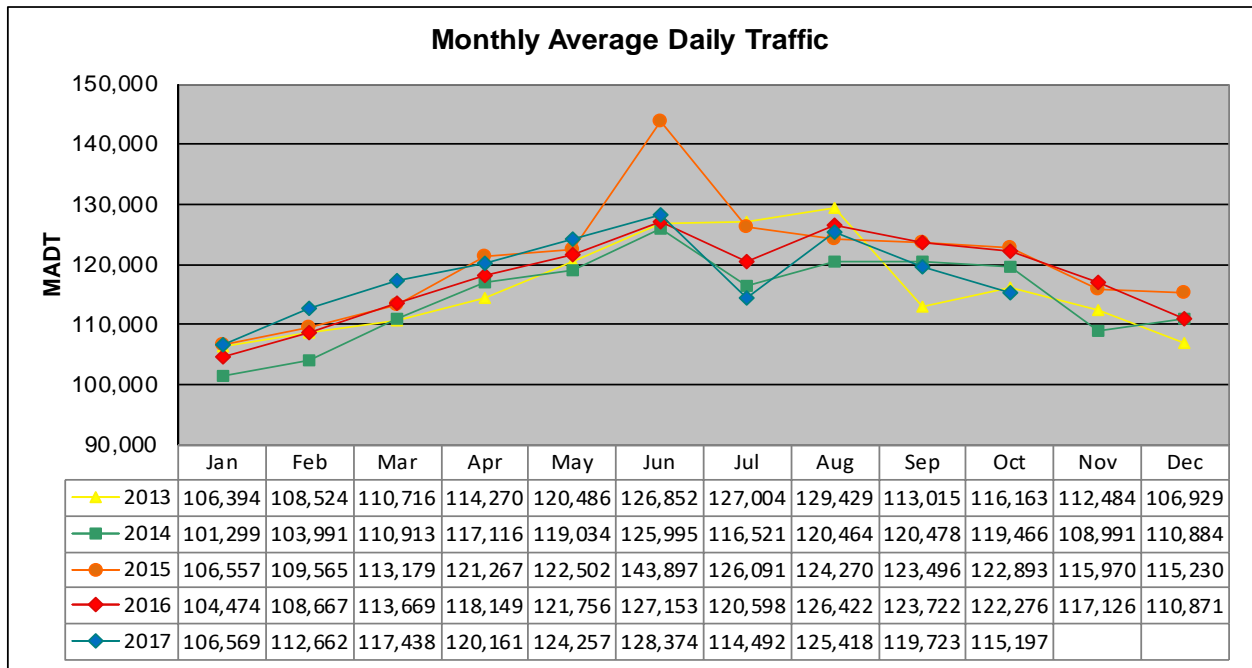


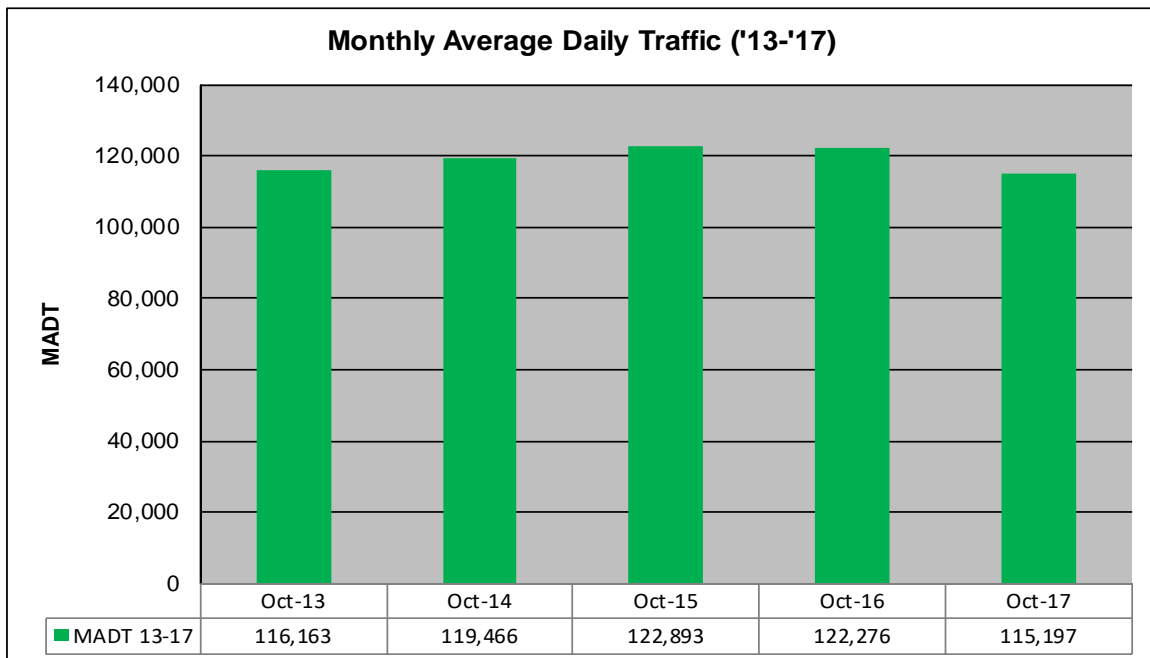
MONTHLY REPORT, STATION NO. 315 (ATR)

OCTOBER 2017

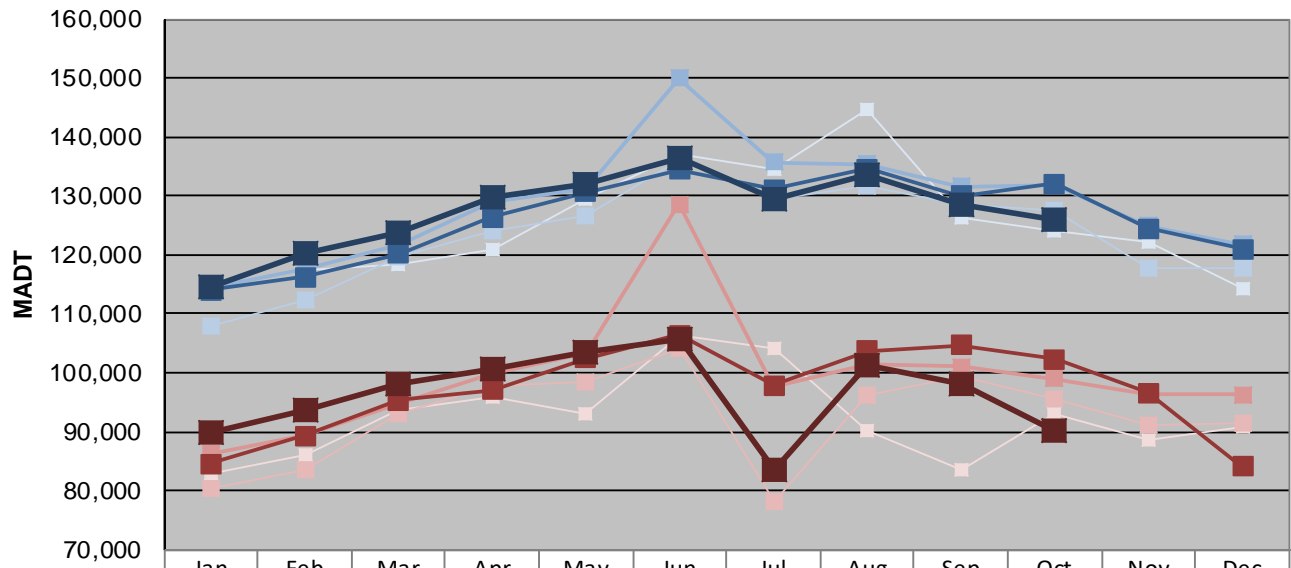
| | | |
|---|----------------------|-------------------------------------|
| Station Measurement: VOLUME | | |
| Route: I-35W | Route Direction: N/S | Lanes: 6 |
| County: Hennepin | | Closest City: Bloomington |
| Functional Class: Urban Principal Arterial - Interstate | | |
| Location: N OF MN RIVER BRIDGE IN BLOOMINGTON | | |
| Ref Post: 004+00.500 | True Mile: 4.55 | Sequence No. 9843 |
| Volume: 3,571,108 | | MADT: 115,197 |
| Weekday (M-F) MADT: 125,988 | | Weekend (Sa-Su) MADT: 90,222 |



Note: Increase in traffic June 2015 due to detours



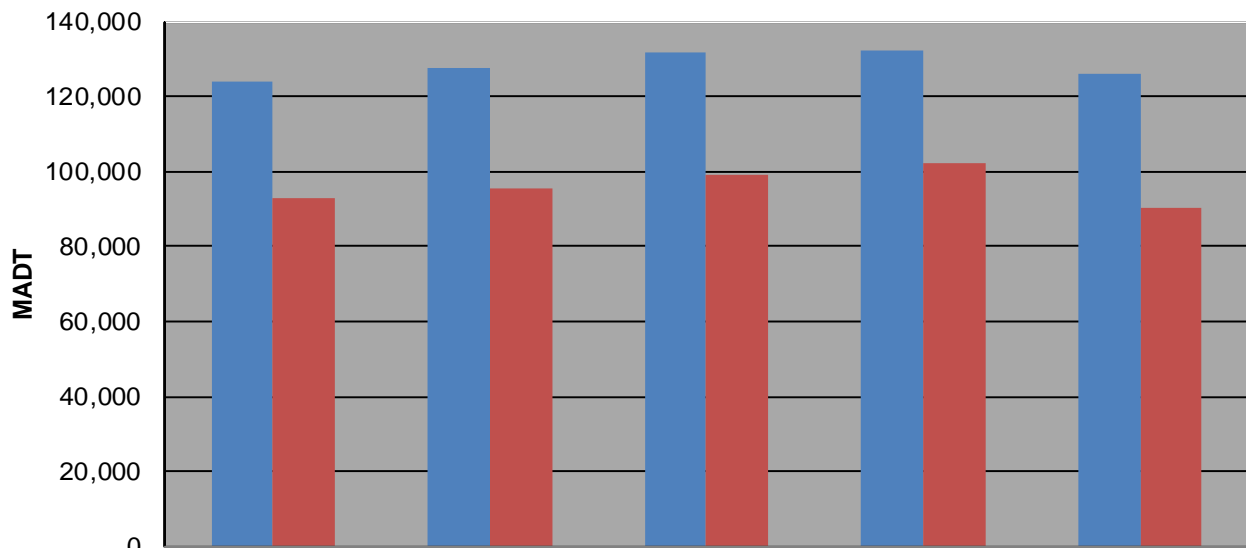
Weekday (WD)/Weekend (WE) Monthly Average Daily Traffic



| | Jan | Feb | Mar | Apr | May | Jun | Jul | Aug | Sep | Oct | Nov | Dec |
|--------|---------|---------|---------|---------|---------|---------|---------|---------|---------|---------|---------|---------|
| '13 WD | 114,730 | 117,442 | 118,412 | 121,070 | 129,364 | 137,078 | 134,486 | 144,776 | 126,416 | 124,228 | 122,080 | 114,264 |
| '13 WE | 82,864 | 86,228 | 93,540 | 95,780 | 93,210 | 106,402 | 104,066 | 90,204 | 83,706 | 92,990 | 88,602 | 90,924 |
| '14 WD | 108,020 | 112,210 | 119,784 | 124,124 | 126,566 | 136,052 | 129,416 | 131,814 | 128,674 | 127,480 | 117,880 | 117,622 |
| '14 WE | 80,430 | 83,444 | 92,956 | 97,924 | 98,366 | 104,160 | 78,096 | 96,256 | 99,436 | 95,658 | 91,212 | 91,600 |
| '15 WD | 114,400 | 117,646 | 121,678 | 129,034 | 131,262 | 149,908 | 135,754 | 135,452 | 131,570 | 131,954 | 124,998 | 121,736 |
| '15 WE | 86,380 | 89,364 | 94,860 | 99,782 | 103,206 | 128,626 | 97,626 | 101,320 | 100,970 | 98,960 | 96,500 | 96,292 |
| '16 WD | 114,062 | 116,192 | 120,224 | 126,388 | 130,602 | 134,452 | 131,064 | 134,546 | 130,030 | 132,034 | 124,430 | 120,950 |
| '16 WE | 84,510 | 89,404 | 95,324 | 97,062 | 102,396 | 106,426 | 97,820 | 103,730 | 104,702 | 102,336 | 96,608 | 84,094 |
| '17 WD | 114,452 | 120,226 | 123,698 | 129,848 | 132,118 | 136,304 | 129,454 | 133,734 | 128,362 | 125,988 | | |
| '17 WE | 90,004 | 93,752 | 98,262 | 100,788 | 103,472 | 105,722 | 83,538 | 101,226 | 97,990 | 90,222 | | |

Note: 'Weekday' defined as Monday-Friday, 'Weekend' defined as Saturday-Sunday

Weekday/Weekend Monthly Average Daily Traffic ('13-'17)



| | Oct-13 | Oct-14 | Oct-15 | Oct-16 | Oct-17 |
|---------|---------|---------|---------|---------|---------|
| Weekday | 124,228 | 127,480 | 131,954 | 132,034 | 125,988 |
| Weekend | 92,990 | 95,658 | 98,960 | 102,336 | 90,222 |