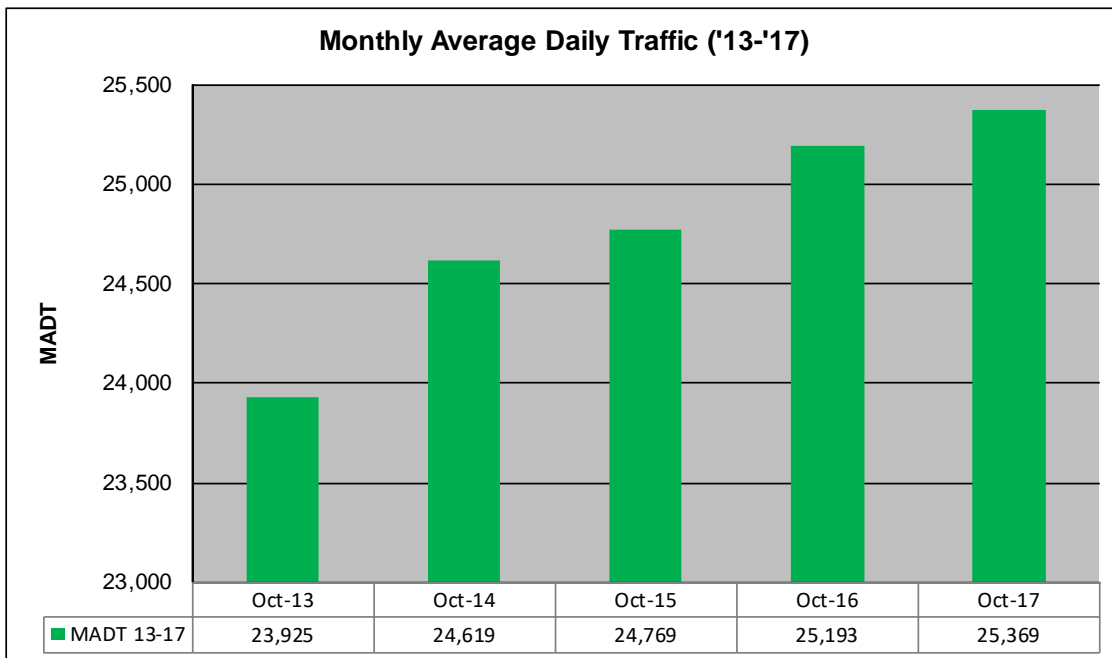
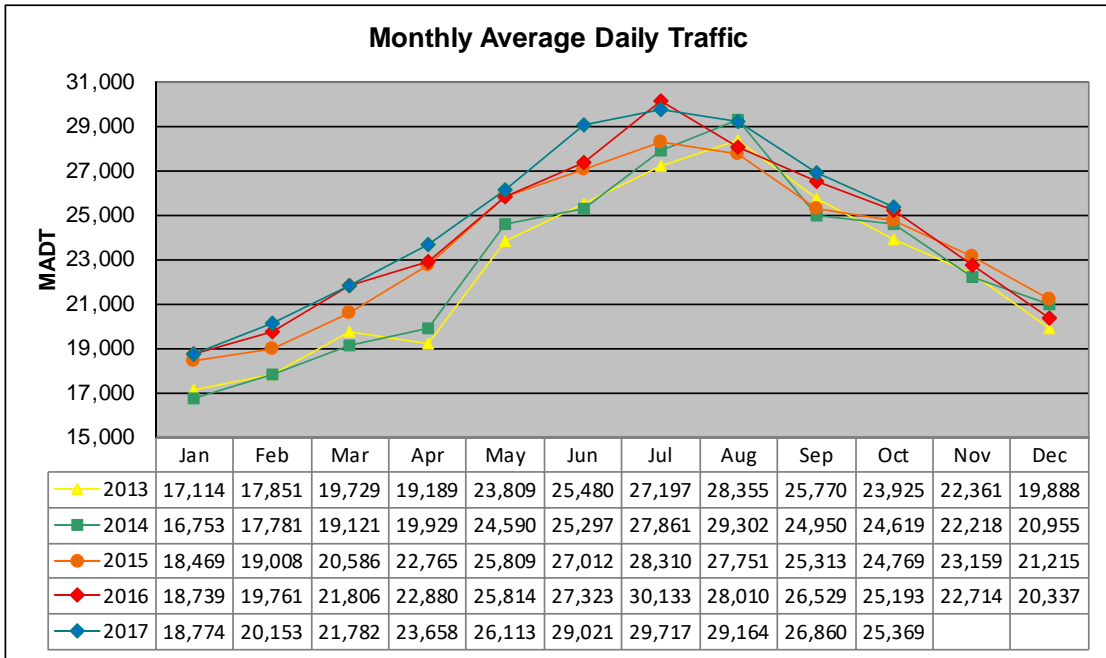


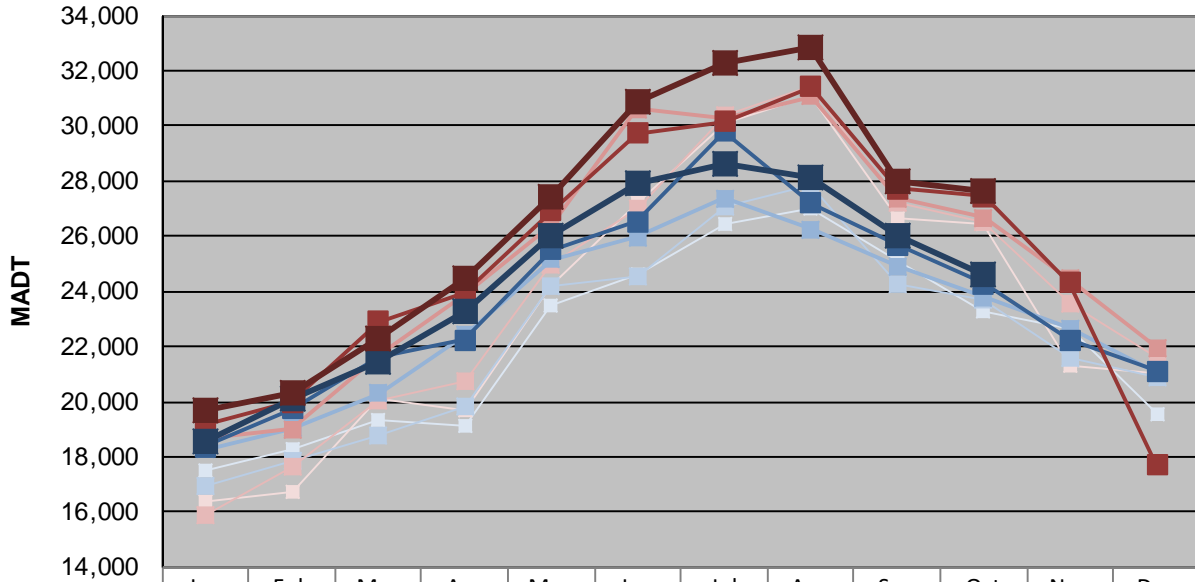
MONTHLY REPORT, STATION NO. 175 (ATR)

OCTOBER 2017

Station Measurement: VOLUME/SPEED/CLASS		
Route: I-94	Route Direction: E/W	Lanes: 4
County: Stearns		Closest City: Sauk Centre
Functional Class: Rural Principal Arterial - Interstate		
Location: E OF CR186, SE OF SAUK CENTRE		
Ref Post: 128+00.640	True Mile: 129	Sequence No. 6776
Volume: 786,442		MADT: 25,369
Weekday (M-F) MADT: 24,596		Weekend (Sa-Su) MADT: 27,640



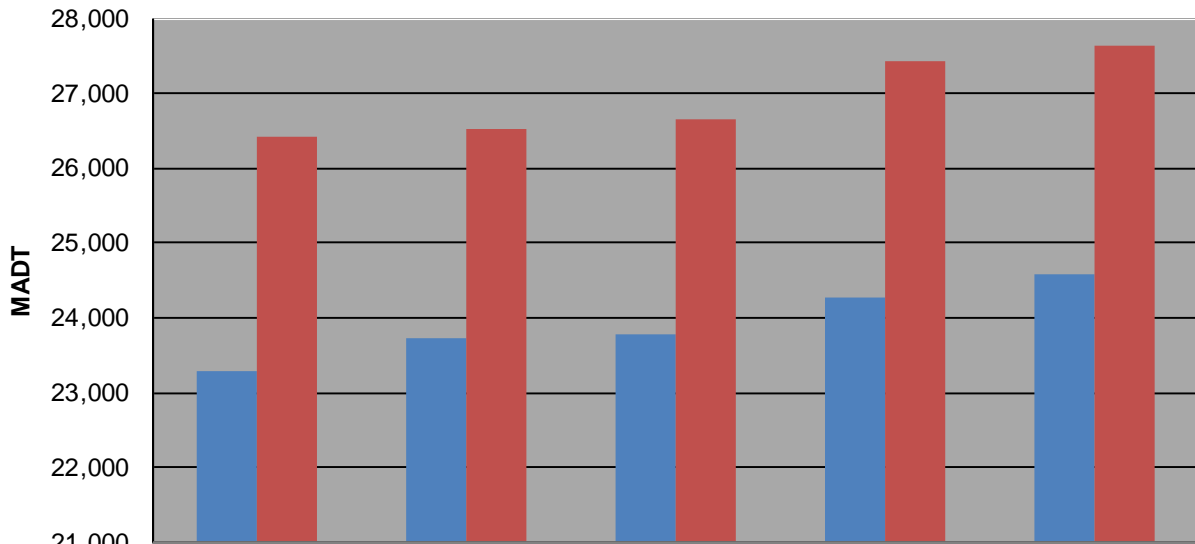
Weekday (WD)/Weekend (WE) Monthly Average Daily Traffic



	Jan	Feb	Mar	Apr	May	Jun	Jul	Aug	Sep	Oct	Nov	Dec
'13 WD	17,496	18,296	19,320	19,130	23,508	24,602	26,410	26,994	25,098	23,294	22,612	19,564
'13 WE	16,358	16,740	20,080	19,656	24,222	27,238	30,084	31,086	26,628	26,432	21,318	21,014
'14 WD	16,916	17,828	18,768	19,840	24,224	24,522	27,100	27,860	24,264	23,718	21,560	20,904
'14 WE	15,870	17,664	20,030	20,732	24,936	27,016	30,400	31,446	27,208	26,536	23,532	21,608
'15 WD	18,252	19,018	20,290	22,430	25,144	25,952	27,380	26,262	24,926	23,778	22,666	21,070
'15 WE	18,682	18,984	21,726	23,900	26,392	30,604	30,262	31,070	27,370	26,656	24,446	21,972
'16 WD	18,352	19,734	21,632	22,220	25,506	26,518	29,818	27,196	25,692	24,268	22,252	21,102
'16 WE	19,182	19,988	22,906	23,938	26,924	29,736	30,152	31,404	27,738	27,428	24,298	17,706
'17 WD	18,530	20,082	21,418	23,248	26,020	27,938	28,602	28,152	26,020	24,596		
'17 WE	19,668	20,330	22,258	24,482	27,428	30,908	32,286	32,860	28,002	27,640		

Note: 'Weekday' defined as Monday-Friday, 'Weekend' defined as Saturday-Sunday

Weekday/Weekend Monthly Average Daily Traffic ('13-'17)



	Oct-13	Oct-14	Oct-15	Oct-16	Oct-17
Weekday	23,294	23,718	23,778	24,268	24,596
Weekend	26,432	26,536	26,656	27,428	27,640