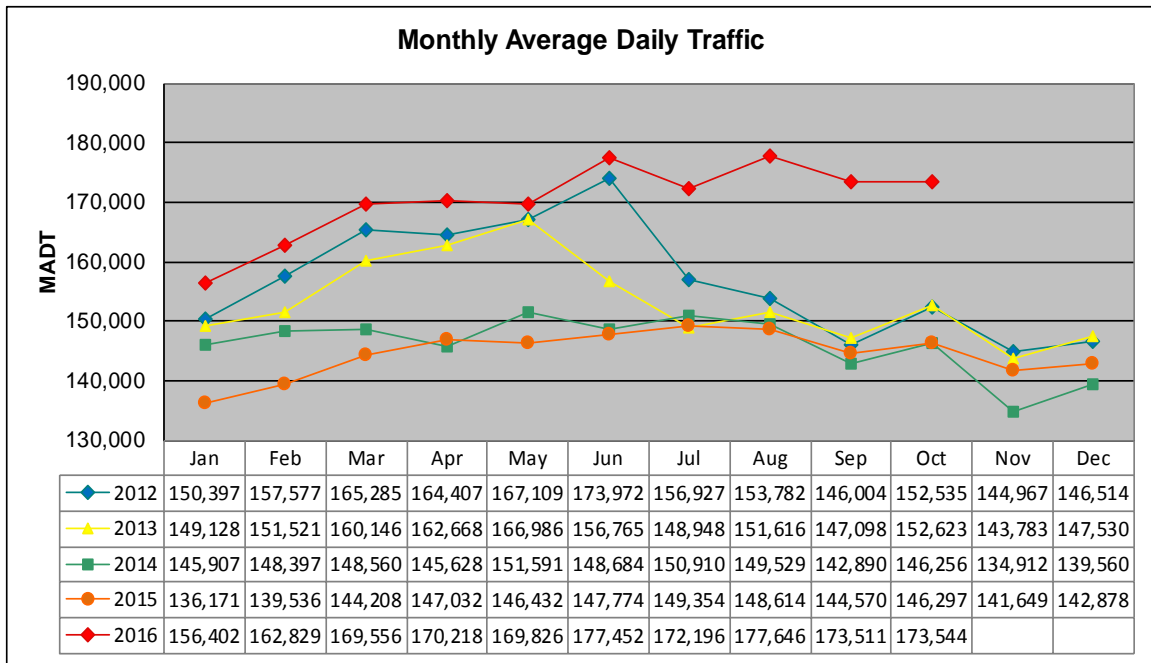


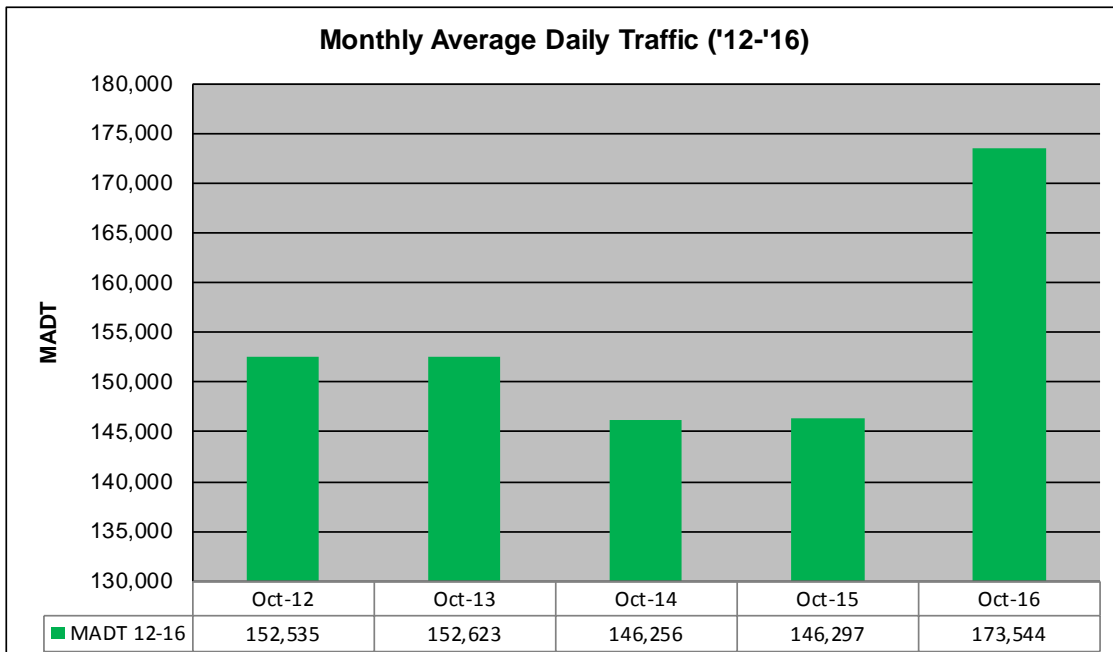
MONTHLY REPORT, STATION NO. 321 (ATR)

OCTOBER 2016

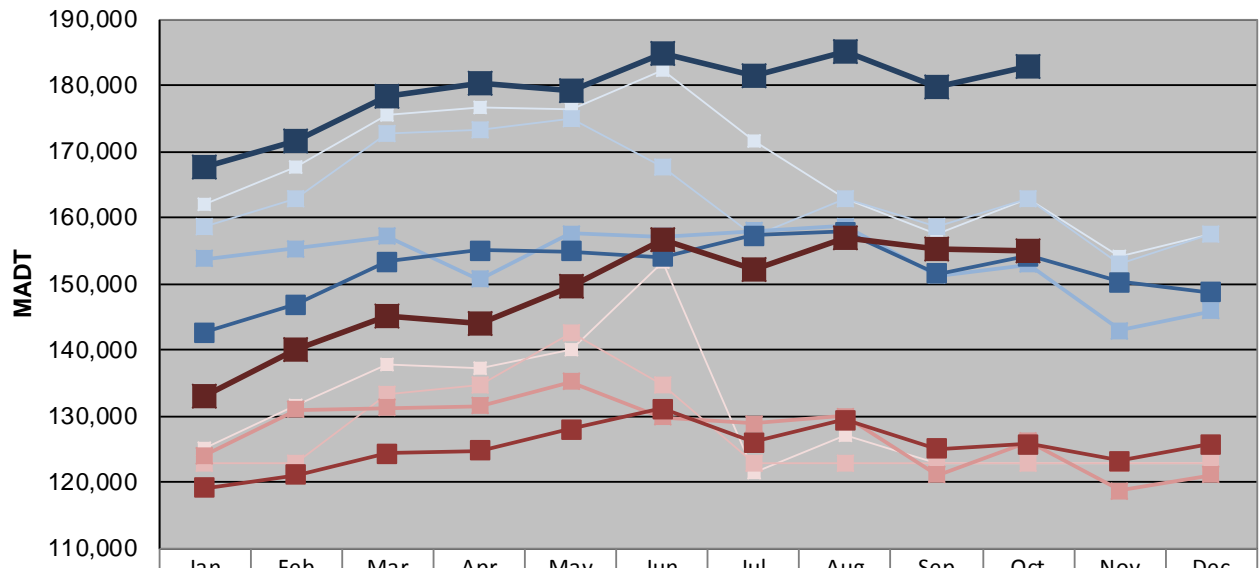
| | | |
|---|----------------------|--------------------------------------|
| Station Measurement: VOLUME | | |
| Route: I-494 | Route Direction: E/W | Lanes: 6 |
| County: Hennepin | | Closest City: Bloomington |
| Functional Class: Urban Principal Arterial - Interstate | | |
| Location: W OF I-35W IN BLOOMINGTON | | |
| Ref Post: 005+00.600 | True Mile: 5.605 | Sequence No. 9846 |
| Volume: 5,379,858 | | MADT: 173,544 |
| Weekday (M-F) MADT: 182,784 | | Weekend (Sa-Su) MADT: 154,868 |



Note: Decrease in traffic July to November 2012, June to November 2013, and March to July 2014 due to construction on I-494



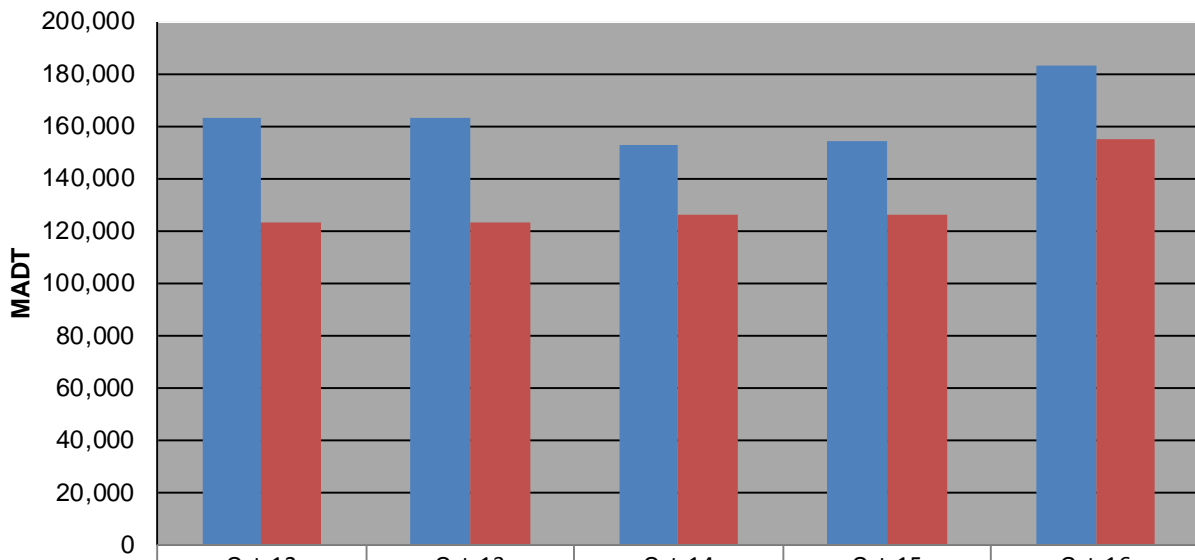
Weekday (WD)/Weekend (WE) Monthly Average Daily Traffic



| | Jan | Feb | Mar | Apr | May | Jun | Jul | Aug | Sep | Oct | Nov | Dec |
|--------|---------|---------|---------|---------|---------|---------|---------|---------|---------|---------|---------|---------|
| '12 WD | 162,084 | 167,774 | 175,500 | 176,684 | 176,272 | 182,312 | 171,544 | 162,916 | 157,506 | 162,928 | 154,042 | 157,512 |
| '12 WE | 125,006 | 131,540 | 137,748 | 137,370 | 140,124 | 153,248 | 121,602 | 127,180 | 123,002 | 123,002 | 123,002 | 123,002 |
| '13 WD | 158,596 | 162,928 | 172,606 | 173,150 | 174,940 | 167,750 | 157,370 | 162,928 | 158,590 | 162,928 | 152,930 | 157,452 |
| '13 WE | 123,002 | 123,002 | 133,422 | 134,622 | 142,516 | 134,794 | 123,002 | 123,002 | 123,002 | 123,002 | 123,002 | 123,002 |
| '14 WD | 153,772 | 155,366 | 157,114 | 150,698 | 157,518 | 157,182 | 158,004 | 158,658 | 151,282 | 153,008 | 142,990 | 145,902 |
| '14 WE | 124,042 | 130,980 | 131,212 | 131,582 | 135,246 | 129,864 | 128,838 | 129,966 | 121,138 | 126,226 | 118,760 | 121,108 |
| '15 WD | 142,686 | 146,918 | 153,428 | 155,110 | 154,924 | 154,052 | 157,350 | 157,822 | 151,492 | 154,150 | 150,290 | 148,780 |
| '15 WE | 119,220 | 121,084 | 124,412 | 124,800 | 127,984 | 131,062 | 126,002 | 129,504 | 125,086 | 125,792 | 123,292 | 125,714 |
| '16 WD | 167,638 | 171,522 | 178,226 | 180,398 | 179,140 | 184,870 | 181,322 | 185,042 | 179,680 | 182,784 | | |
| '16 WE | 133,004 | 140,180 | 145,256 | 144,076 | 149,606 | 156,592 | 152,218 | 156,816 | 155,140 | 154,868 | | |

Note: 'Weekday' defined as Monday-Friday, 'Weekend' defined as Saturday-Sunday

Weekday/Weekend Monthly Average Daily Traffic ('12-'16)



| | Oct-12 | Oct-13 | Oct-14 | Oct-15 | Oct-16 |
|---------|---------|---------|---------|---------|---------|
| Weekday | 162,928 | 162,928 | 153,008 | 154,150 | 182,784 |
| Weekend | 123,002 | 123,002 | 126,226 | 125,792 | 154,868 |