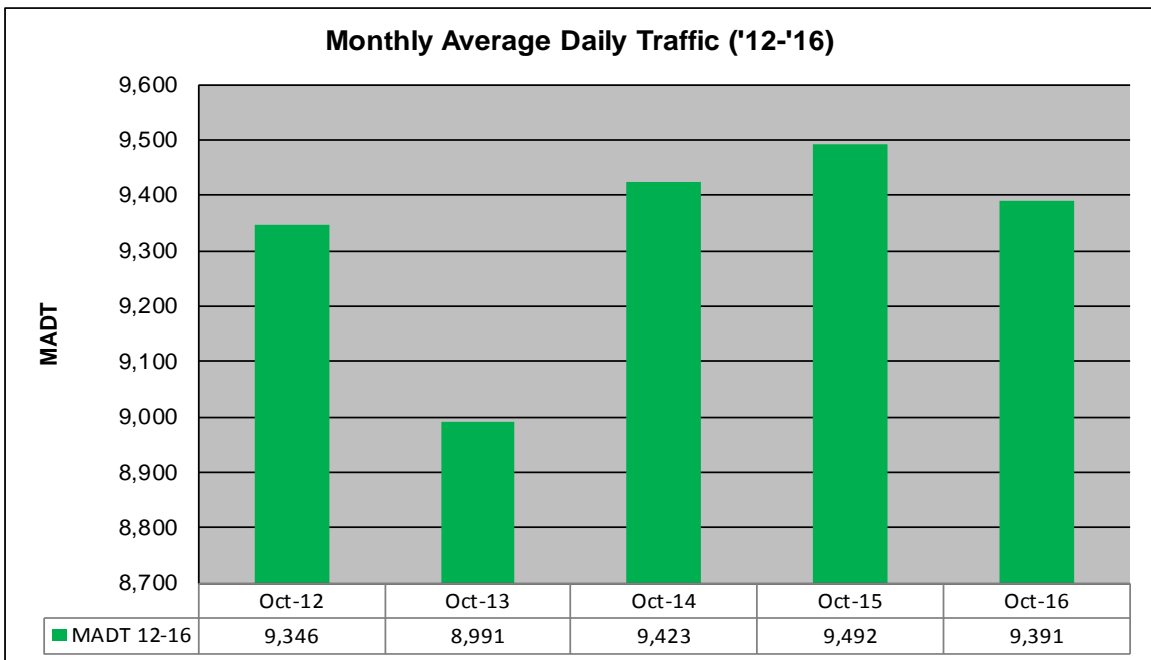
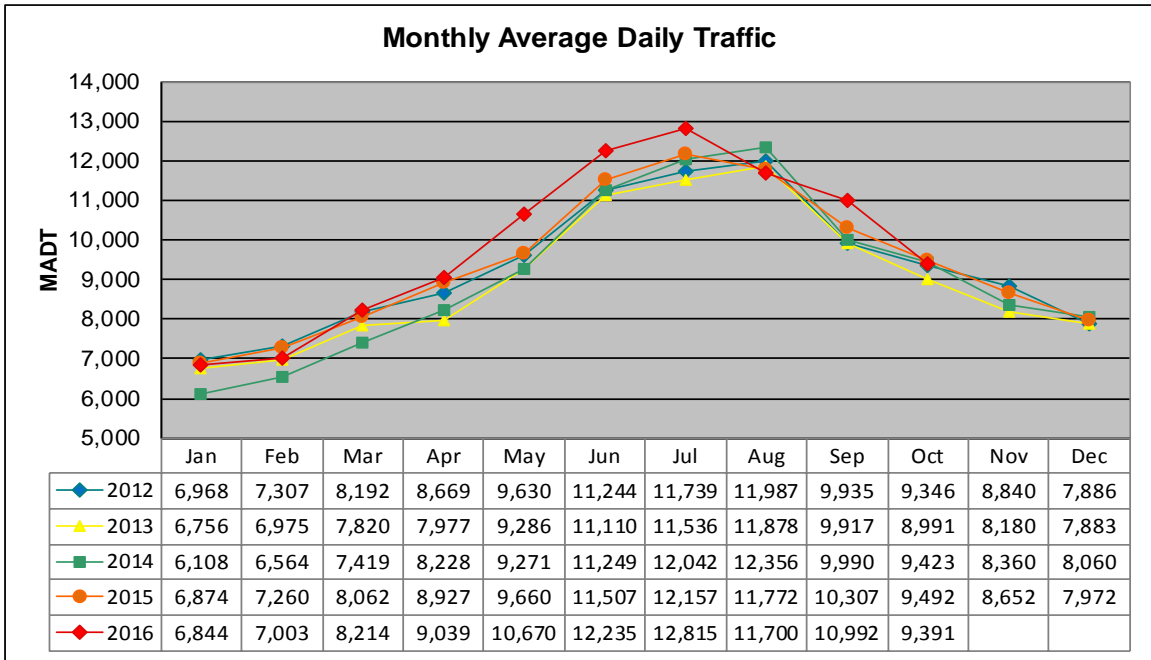


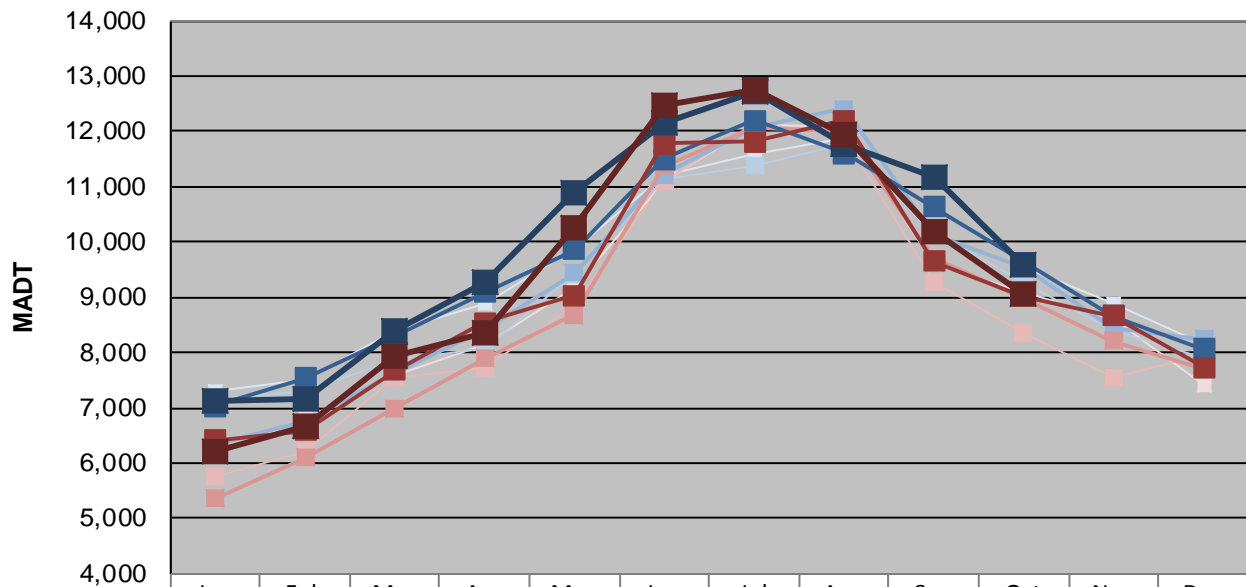
MONTHLY REPORT, STATION NO. 227 (ATR)

OCTOBER 2016

Station Measurement: VOLUME/SPEED/CLASS		
Route: I-90	Route Direction: E/W	Lanes: 4
County: Freeborn		Closest City: Albert Lea
Functional Class: Rural Principal Arterial - Interstate		
Location: SW OF TH13, W OF ALBERT LEA		
Ref Post: 153+00.700	True Mile: 152.36	Sequence No. 9833
Volume: 291,118		MADT: 9,391
Weekday (M-F) MADT: 9,574		Weekend (Sa-Su) MADT: 9,074



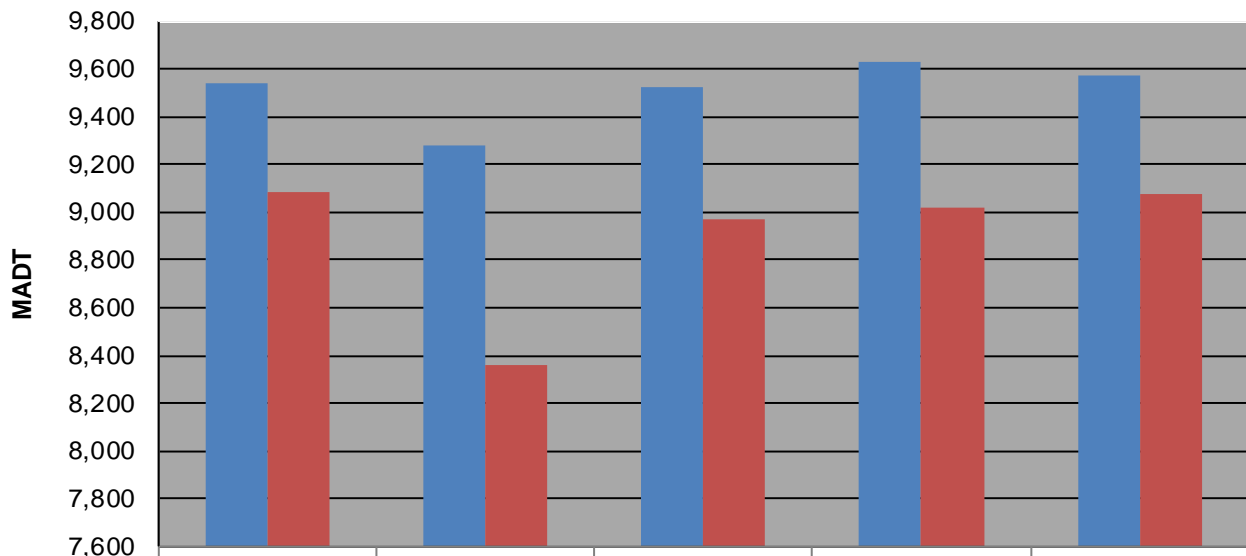
Weekday (WD)/Weekend (WE) Monthly Average Daily Traffic



	Jan	Feb	Mar	Apr	May	Jun	Jul	Aug	Sep	Oct	Nov	Dec
'12 WD	7,316	7,518	8,374	8,876	9,870	11,220	11,598	11,864	10,112	9,544	8,874	8,144
'12 WE	6,160	6,822	7,582	8,162	9,182	11,086	12,118	12,102	9,586	9,086	8,616	7,416
'13 WD	7,150	7,286	7,854	8,080	9,400	11,120	11,392	11,758	10,186	9,278	8,374	7,902
'13 WE	5,736	6,196	7,554	7,732	8,862	11,092	12,146	11,900	9,284	8,362	7,544	7,952
'14 WD	6,320	6,754	7,642	8,410	9,436	11,214	12,068	12,408	10,148	9,526	8,440	8,240
'14 WE	5,356	6,088	6,992	7,892	8,676	11,374	12,050	12,004	9,702	8,974	8,202	7,708
'15 WD	7,024	7,530	8,286	9,094	9,866	11,488	12,198	11,596	10,636	9,626	8,672	8,058
'15 WE	6,410	6,586	7,674	8,546	9,036	11,772	11,810	12,200	9,648	9,022	8,662	7,740
'16 WD	7,128	7,164	8,386	9,268	10,904	12,158	12,712	11,762	11,178	9,574		
'16 WE	6,202	6,654	7,936	8,364	10,240	12,478	12,750	11,932	10,194	9,074		

Note: 'Weekday' defined as Monday-Friday, 'Weekend' defined as Saturday-Sunday

Weekday/Weekend Monthly Average Daily Traffic ('12-'16)



	Oct-12	Oct-13	Oct-14	Oct-15	Oct-16
Weekday	9,544	9,278	9,526	9,626	9,574
Weekend	9,086	8,362	8,974	9,022	9,074