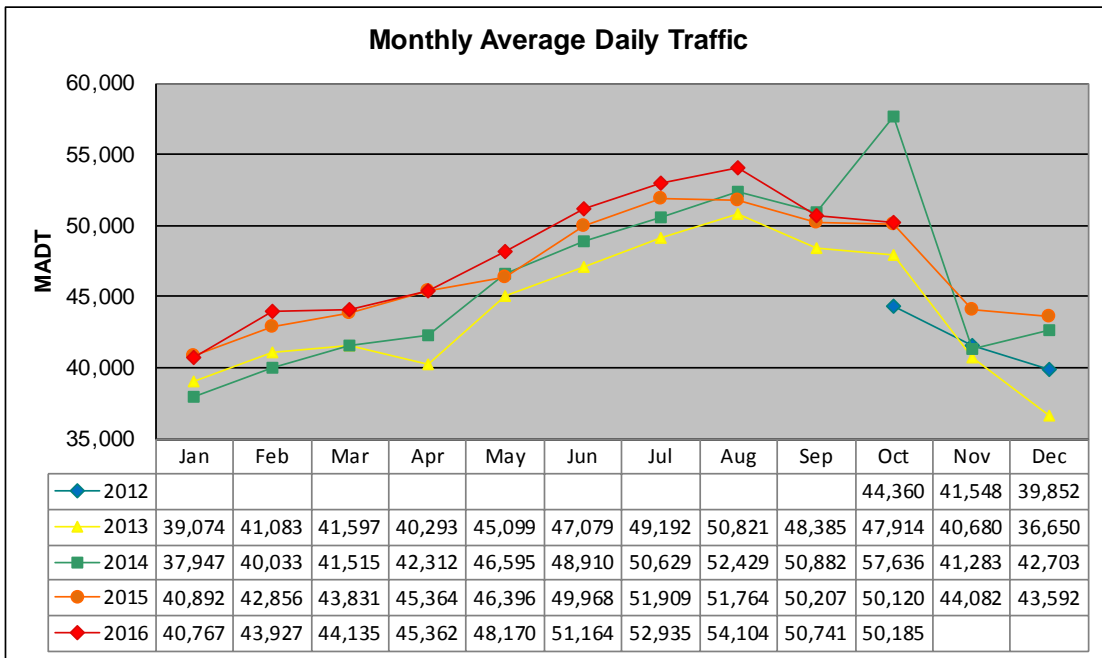


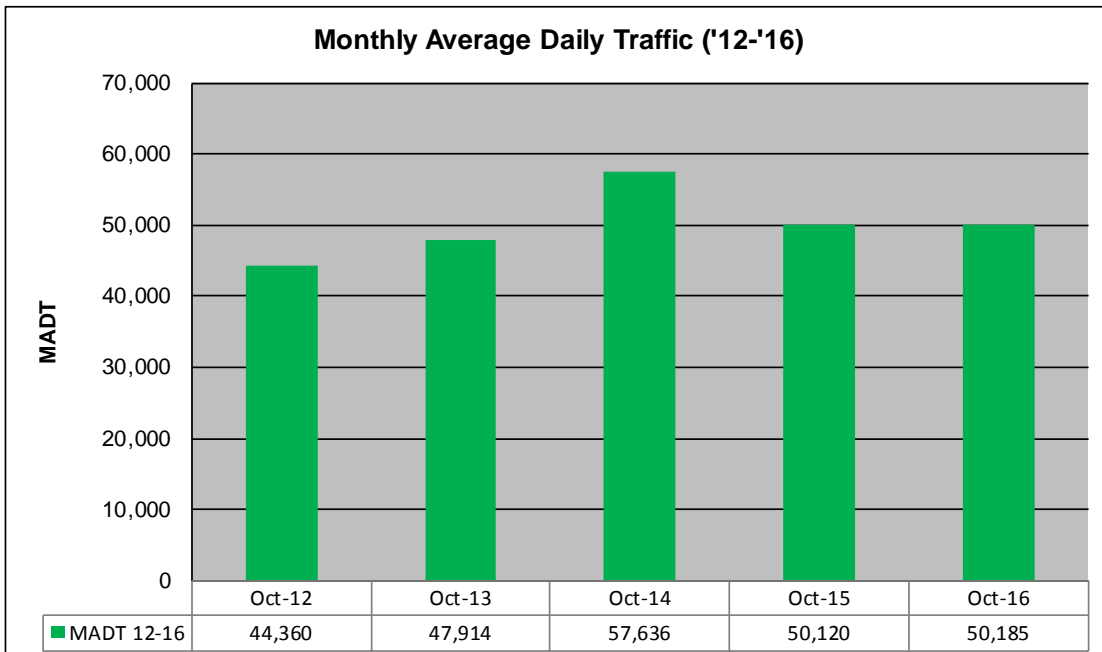
MONTHLY REPORT, STATION NO. 103 (ATR)

OCTOBER 2016

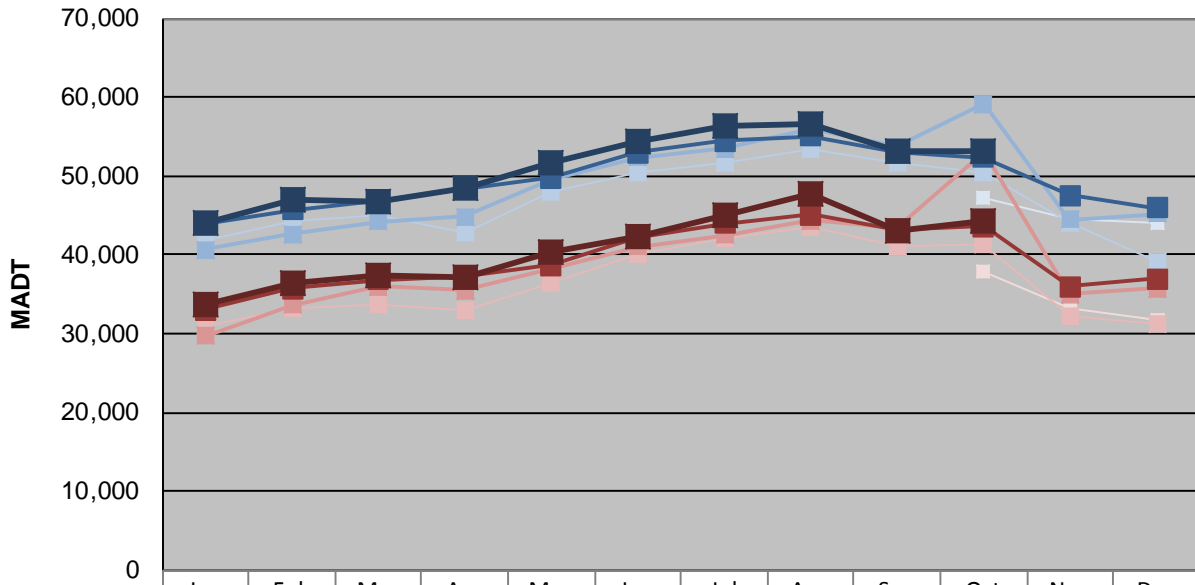
| | | |
|---|----------------------|-------------------------------------|
| Station Measurement: VOLUME/SPEED/CLASS | | |
| Route: I-35 | Route Direction: N/S | Lanes: 4 |
| County: St Louis | Closest City: Duluth | |
| Functional Class: Urban Principal Arterial - Interstate | | |
| Location: E OF MSAS107 (CENTRAL AVE) IN DULUTH | | |
| Ref Post: 252+00.600 | True Mile: 252.622 | Sequence No. 9825 |
| Volume: 1,555,730 | | MADT: 50,185 |
| Weekday (M-F) MADT: 53,204 | | Weekend (Sa-Su) MADT: 44,170 |



Note: No data from January to September 2012 due to sensors destroyed by construction... Increase in traffic October 2014 due to detour from bridge construction



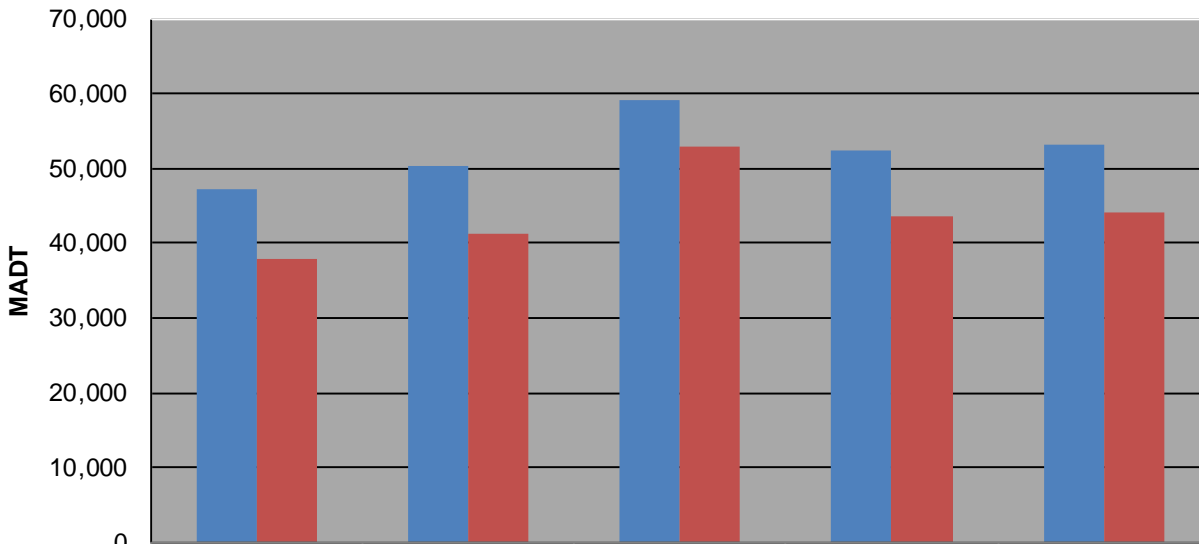
Weekday (WD)/Weekend (WE) Monthly Average Daily Traffic



| | Jan | Feb | Mar | Apr | May | Jun | Jul | Aug | Sep | Oct | Nov | Dec |
|--------|--------|--------|--------|--------|--------|--------|--------|--------|--------|--------|--------|--------|
| '12 WD | | | | | | | | | | 47,226 | 44,522 | 43,934 |
| '12 WE | | | | | | | | | | 37,924 | 33,176 | 31,674 |
| '13 WD | 41,942 | 44,202 | 45,038 | 42,860 | 47,856 | 50,536 | 51,758 | 53,476 | 51,702 | 50,416 | 44,058 | 39,108 |
| '13 WE | 31,028 | 33,286 | 33,786 | 33,044 | 36,374 | 40,166 | 42,140 | 43,614 | 41,114 | 41,300 | 32,238 | 31,314 |
| '14 WD | 40,588 | 42,604 | 44,234 | 44,874 | 49,584 | 52,376 | 53,402 | 56,076 | 53,756 | 59,124 | 44,412 | 45,260 |
| '14 WE | 29,680 | 33,606 | 35,954 | 35,482 | 38,336 | 41,080 | 42,448 | 44,324 | 43,532 | 53,056 | 35,030 | 35,754 |
| '15 WD | 43,888 | 45,732 | 46,962 | 48,376 | 49,790 | 52,996 | 54,478 | 55,106 | 53,022 | 52,334 | 47,566 | 45,986 |
| '15 WE | 33,054 | 35,664 | 36,858 | 37,162 | 38,676 | 42,294 | 43,988 | 45,078 | 43,146 | 43,662 | 36,016 | 36,982 |
| '16 WD | 44,110 | 46,928 | 46,654 | 48,492 | 51,738 | 54,366 | 56,398 | 56,632 | 53,130 | 53,204 | | |
| '16 WE | 33,604 | 36,390 | 37,310 | 37,162 | 40,312 | 42,190 | 45,136 | 47,824 | 43,112 | 44,170 | | |

Note: 'Weekday' defined as Monday-Friday, 'Weekend' defined as Saturday-Sunday

Weekday/Weekend Monthly Average Daily Traffic ('12-'16)



| | Oct-12 | Oct-13 | Oct-14 | Oct-15 | Oct-16 |
|---------|--------|--------|--------|--------|--------|
| Weekday | 47,226 | 50,416 | 59,124 | 52,334 | 53,204 |
| Weekend | 37,924 | 41,300 | 53,056 | 43,662 | 44,170 |