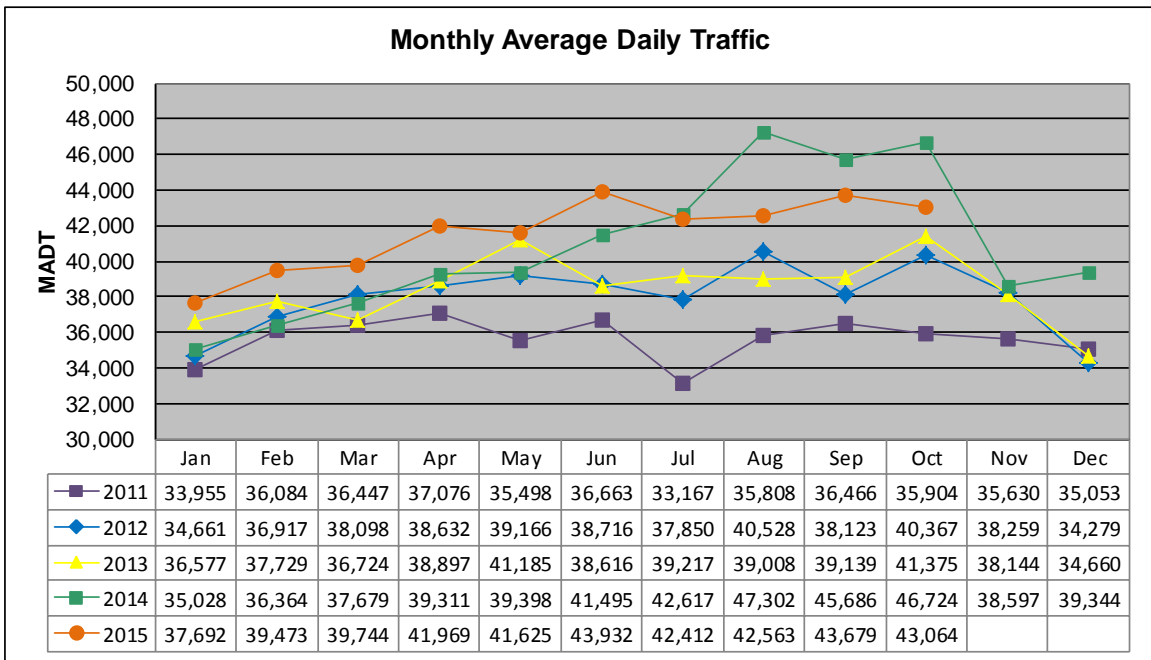


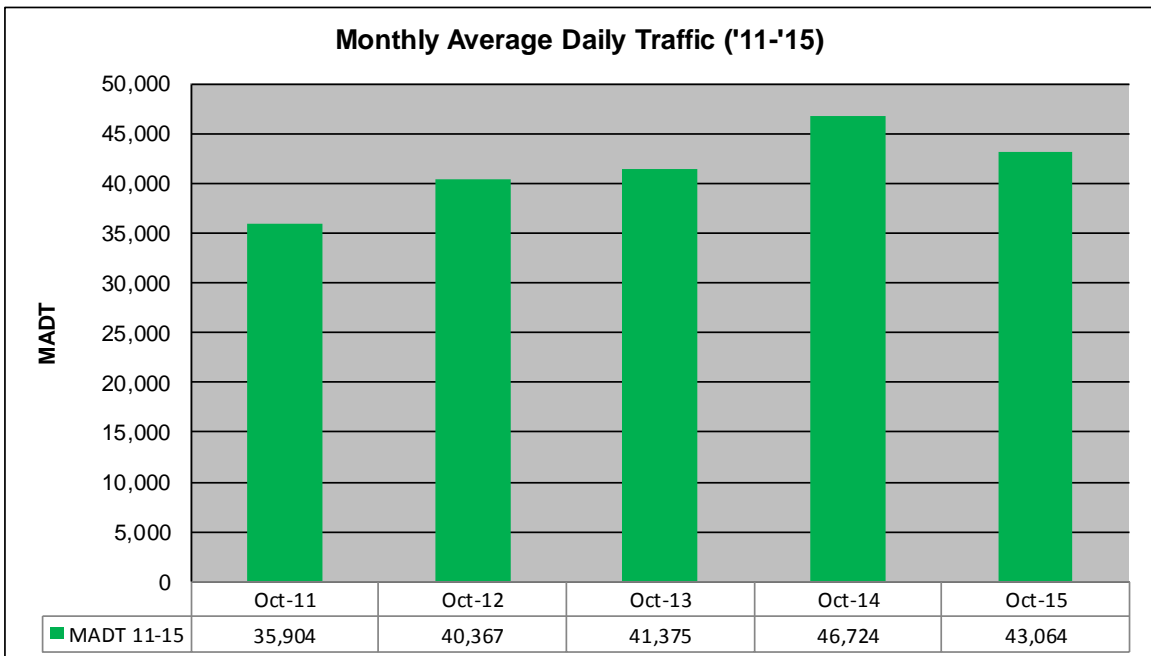
MONTHLY REPORT, STATION NO. 389 (ATR)

OCTOBER 2015

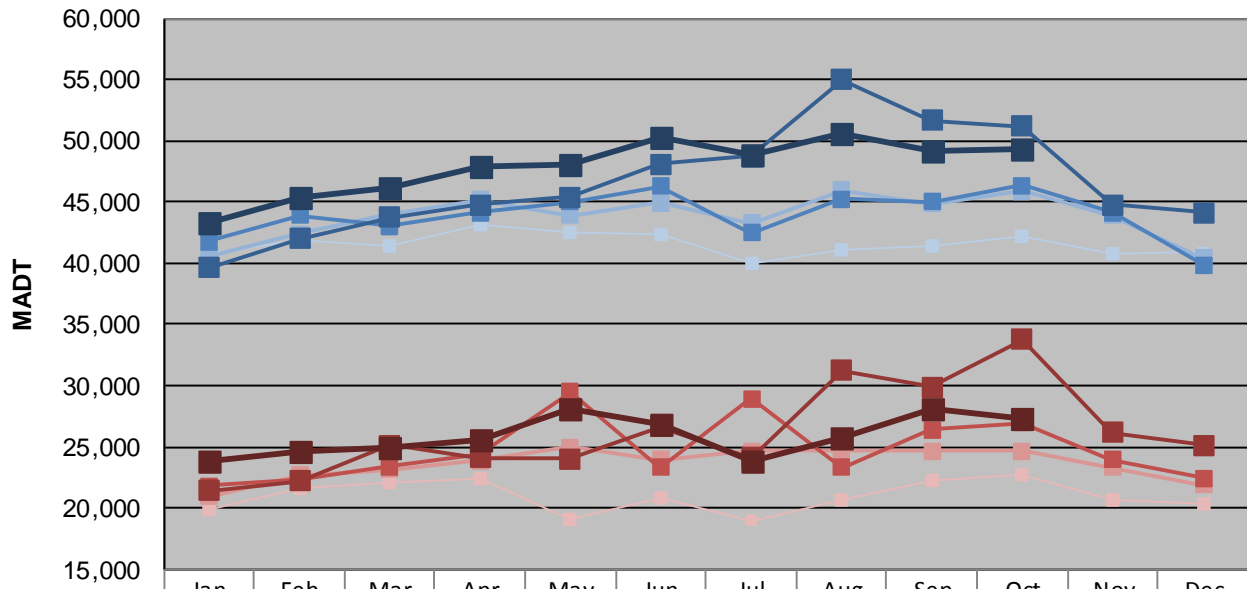
Station Measurement: VOLUME		
Route: TH 280	Route Direction: N/S	Lanes: 4
County: Ramsey		Closest City: Lauderdale
Functional Class: Urban Principal Arterial - Other Freeways or Expressways		
Location: N OF CSAH30 (LARPEN TEUR AVE W) IN LAUDERDALE		
Ref Post: 002+00.650	True Mile: 2.65	Sequence No. 9877
Volume: 1,334,997		MADT: 43,064
Weekday (M-F) MADT: 49,322		Weekend (Sa-Su) MADT: 27,242



Note: Increase in traffic July to September 2014 due to detour from I-35W



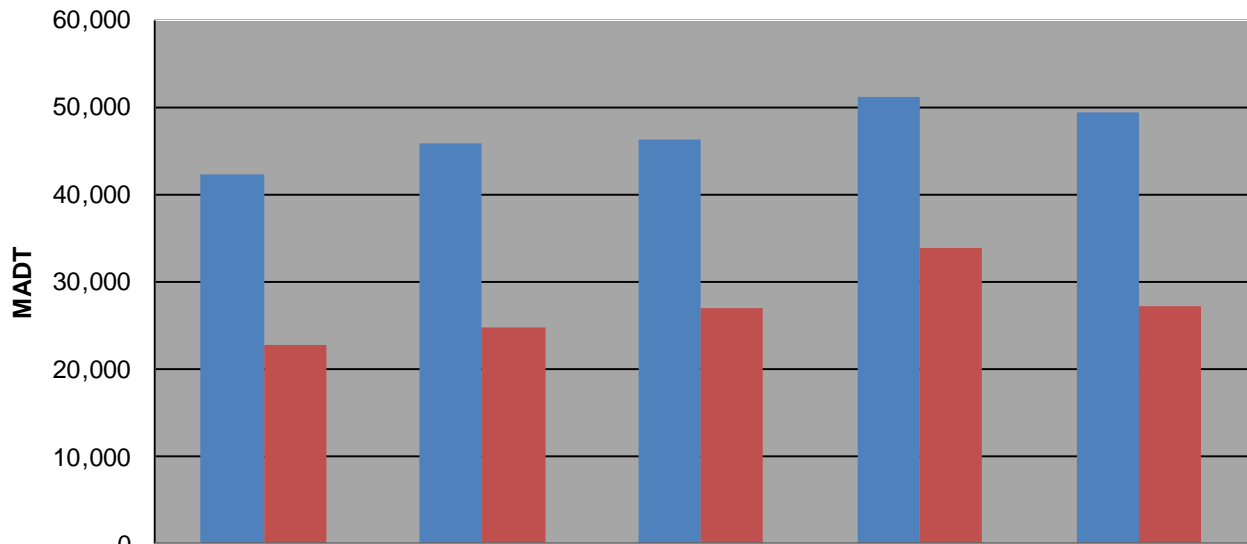
Weekday (WD)/Weekend (WE) Monthly Average Daily Traffic



	Jan	Feb	Mar	Apr	May	Jun	Jul	Aug	Sep	Oct	Nov	Dec
'11 WD	40,794	41,840	41,410	43,210	42,452	42,330	39,968	41,126	41,468	42,214	40,818	40,862
'11 WE	19,904	21,668	22,134	22,422	19,158	20,878	18,984	20,616	22,266	22,790	20,724	20,300
'12 WD	40,612	42,396	43,964	45,184	43,896	44,960	43,240	45,950	44,832	45,878	43,874	40,458
'12 WE	20,954	22,658	23,188	23,878	24,994	23,952	24,630	24,784	24,704	24,700	23,350	21,874
'13 WD	41,728	43,884	43,030	44,150	45,010	46,250	42,504	45,284	44,996	46,336	44,110	39,848
'13 WE	21,782	22,342	23,376	24,352	29,514	23,348	28,948	23,334	26,382	26,928	23,942	22,468
'14 WD	39,606	42,040	43,752	44,764	45,394	48,066	48,722	54,960	51,634	51,176	44,792	44,144
'14 WE	21,454	22,176	25,108	24,118	24,046	26,658	24,084	31,236	29,868	33,740	26,204	25,160
'15 WD	43,294	45,418	46,104	47,866	48,018	50,204	48,880	50,644	49,220	49,322		
'15 WE	23,846	24,612	24,942	25,612	28,032	26,882	23,876	25,770	28,040	27,242		

Note: 'Weekday' defined as Monday-Friday, 'Weekend' defined as Saturday-Sunday

Weekday/Weekend Monthly Average Daily Traffic ('11-'15)



	Oct-11	Oct-12	Oct-13	Oct-14	Oct-15
Weekday	42,214	45,878	46,336	51,176	49,322
Weekend	22,790	24,700	26,928	33,740	27,242