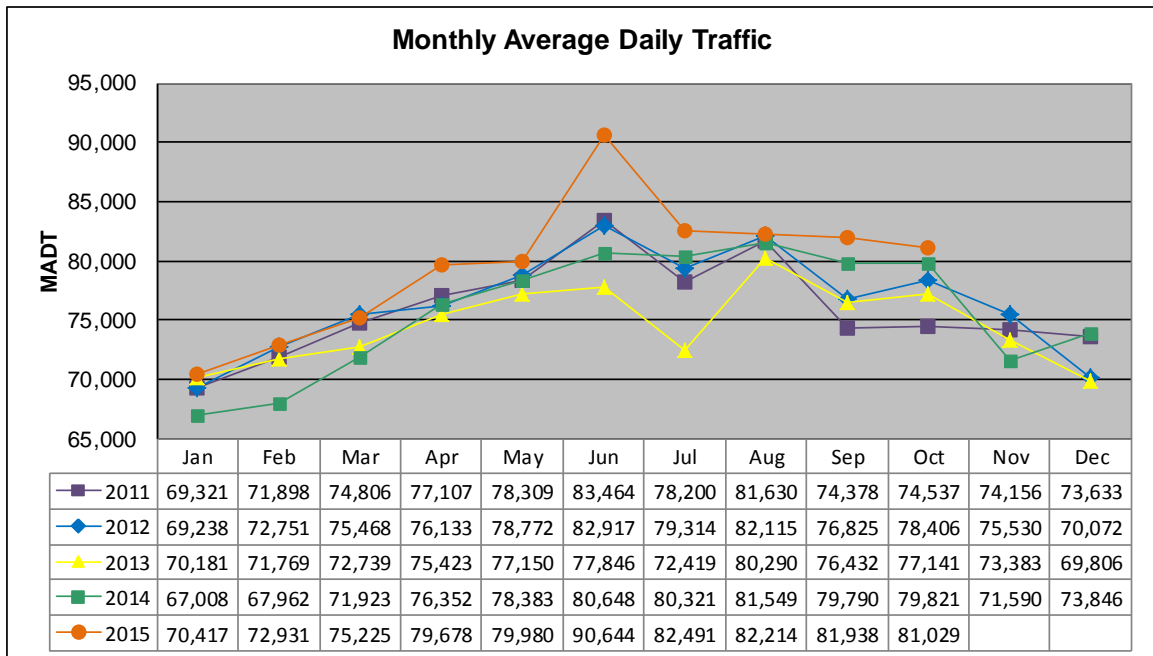


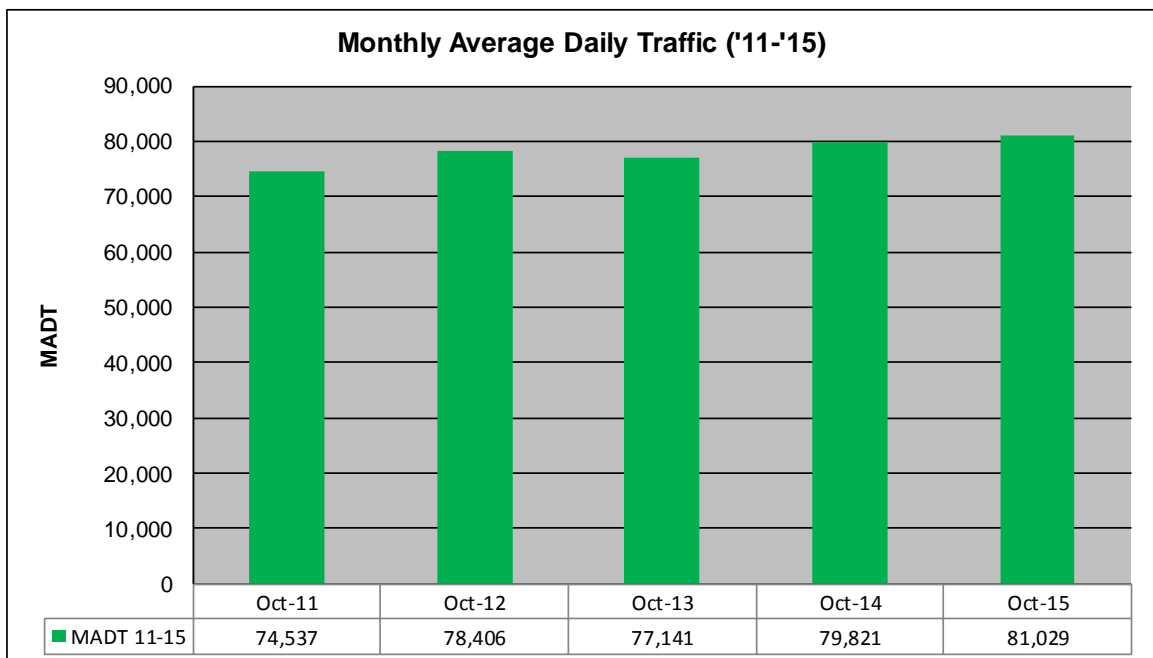
# MONTHLY REPORT, STATION NO. 336 (ATR)

## OCTOBER 2015

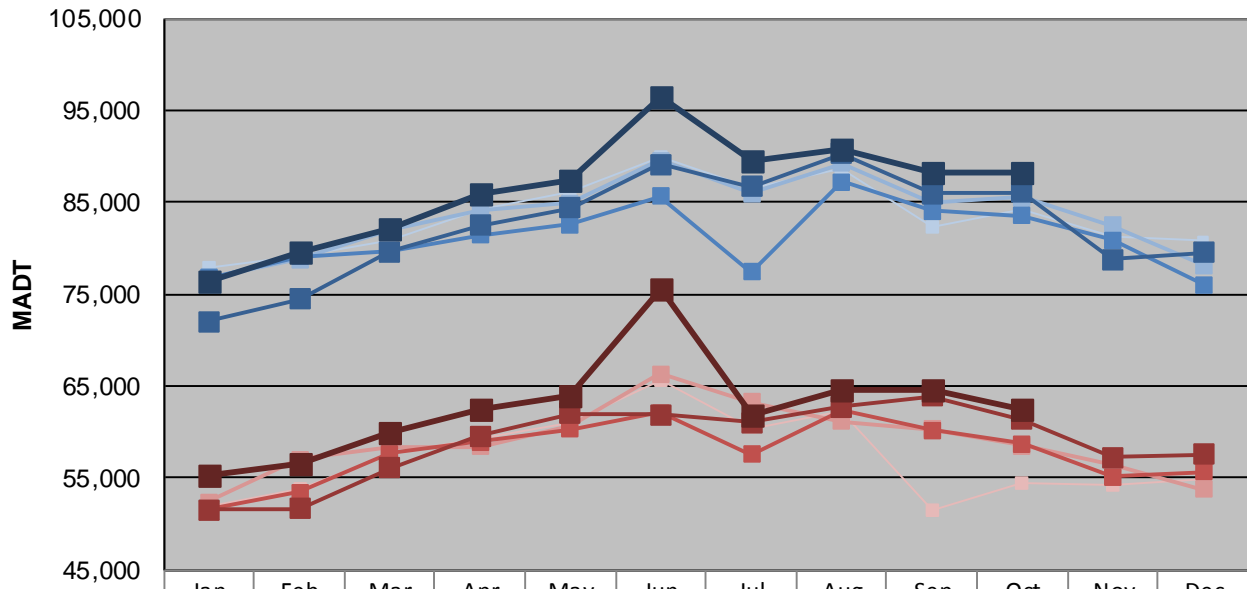
|   |                      |                                     |
|---|----------------------|-------------------------------------|
| Station Measurement: VOLUME                             |                      |                                     |
| Route: I-35E  | Route Direction: N/S | Lanes: 6                            |
| County: Dakota  |                      | Closest City: Eagan                 |
| Functional Class: Urban Principal Arterial - Interstate |                      |                                     |
| Location: N OF MSAS102 (DEERWOOD DR) IN EAGAN           |                      |                                     |
| Ref Post: 095+00.422                                    | True Mile: 95.48     | Sequence No. 9854                   |
| <b>Volume: 2,511,888</b>                                |                      | <b>MADT: 81,029</b>                 |
| <b>Weekday (M-F) MADT: 88,152</b>                       |                      | <b>Weekend (Sa-Su) MADT: 62,438</b> |



Note: Decrease in traffic September/October 2011 and June/July 2013 due to construction on I-35E



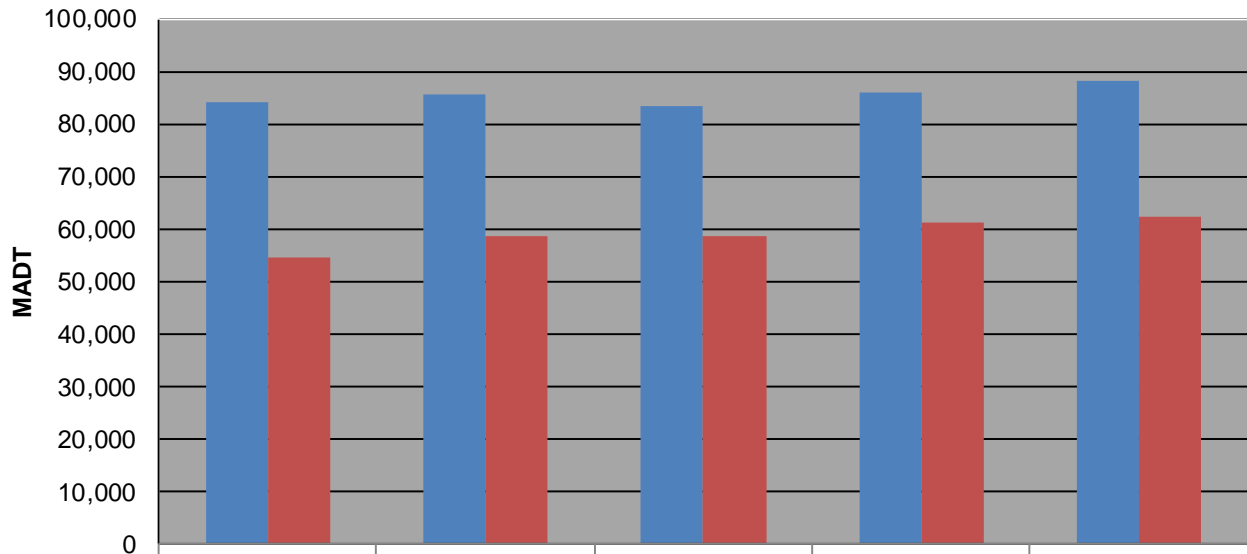
### Weekday (WD)/Weekend (WE) Monthly Average Daily Traffic



|        | Jan    | Feb    | Mar    | Apr    | May    | Jun    | Jul    | Aug    | Sep    | Oct    | Nov    | Dec    |
|--------|--------|--------|--------|--------|--------|--------|--------|--------|--------|--------|--------|--------|
| '11 WD | 77,886 | 79,152 | 80,856 | 84,294 | 86,058 | 89,872 | 86,444 | 88,576 | 82,262 | 84,256 | 81,216 | 80,754 |
| '11 WE | 51,990 | 53,732 | 57,664 | 59,352 | 60,968 | 65,600 | 60,442 | 62,174 | 51,464 | 54,516 | 54,158 | 54,978 |
| '12 WD | 76,764 | 78,812 | 81,904 | 84,140 | 84,920 | 89,596 | 85,984 | 89,204 | 85,056 | 85,552 | 82,520 | 78,184 |
| '12 WE | 52,444 | 57,056 | 58,334 | 58,418 | 60,606 | 66,374 | 63,320 | 61,112 | 60,364 | 58,478 | 56,528 | 53,726 |
| '13 WD | 76,776 | 79,098 | 79,624 | 81,418 | 82,600 | 85,692 | 77,412 | 87,246 | 84,058 | 83,556 | 80,846 | 76,074 |
| '13 WE | 51,538 | 53,446 | 57,634 | 58,958 | 60,290 | 62,154 | 57,608 | 62,412 | 60,166 | 58,710 | 55,146 | 55,652 |
| '14 WD | 72,026 | 74,480 | 79,634 | 82,506 | 84,428 | 89,130 | 86,714 | 90,340 | 85,944 | 86,024 | 78,768 | 79,486 |
| '14 WE | 51,572 | 51,670 | 56,130 | 59,578 | 61,984 | 61,874 | 61,030 | 62,772 | 63,922 | 61,356 | 57,234 | 57,578 |
| '15 WD | 76,344 | 79,494 | 82,148 | 85,896 | 87,284 | 96,400 | 89,486 | 90,760 | 88,172 | 88,152 |        |        |
| '15 WE | 55,232 | 56,522 | 59,934 | 62,454 | 64,036 | 75,662 | 61,752 | 64,604 | 64,612 | 62,438 |        |        |

Note: 'Weekday' defined as Monday-Friday, 'Weekend' defined as Saturday-Sunday

### Weekday/Weekend Monthly Average Daily Traffic ('11-'15)



|         | Oct-11 | Oct-12 | Oct-13 | Oct-14 | Oct-15 |
|---------|--------|--------|--------|--------|--------|
| Weekday | 84,256 | 85,552 | 83,556 | 86,024 | 88,152 |
| Weekend | 54,516 | 58,478 | 58,710 | 61,356 | 62,438 |