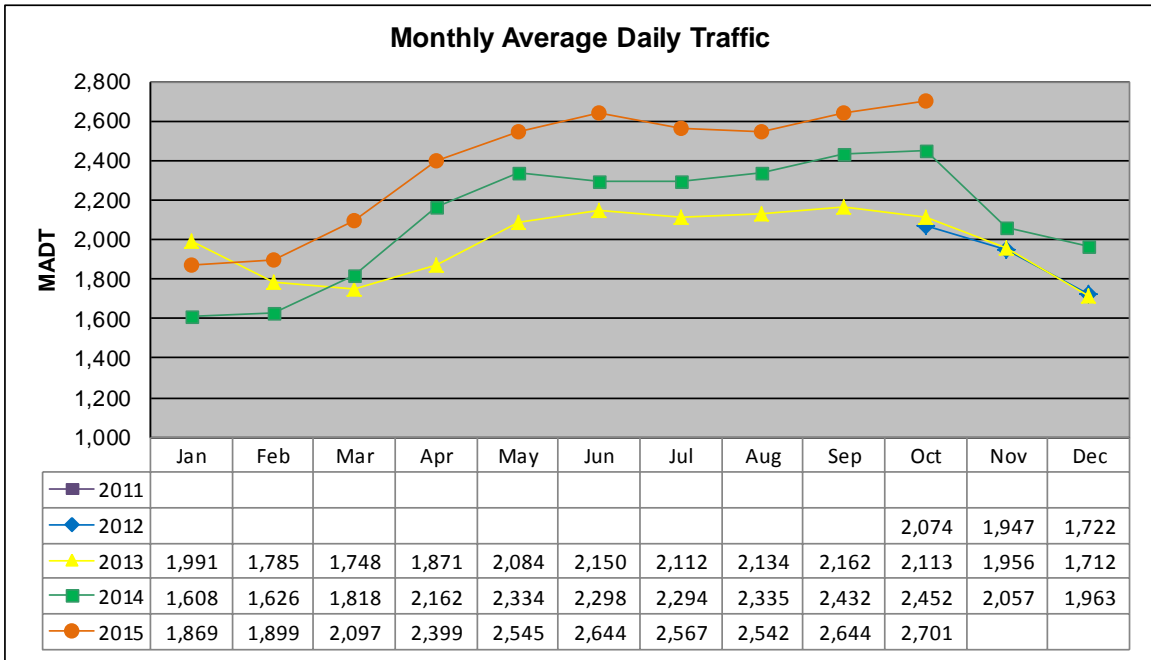


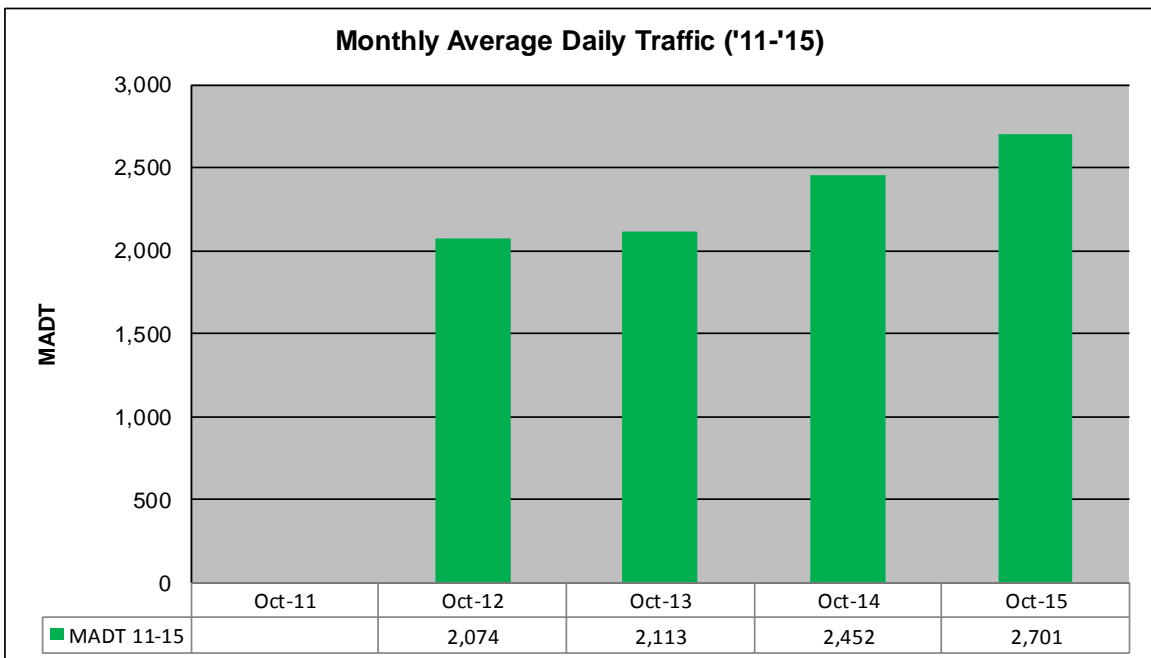
# MONTHLY REPORT, STATION NO. 230 (ATR)

## OCTOBER 2015

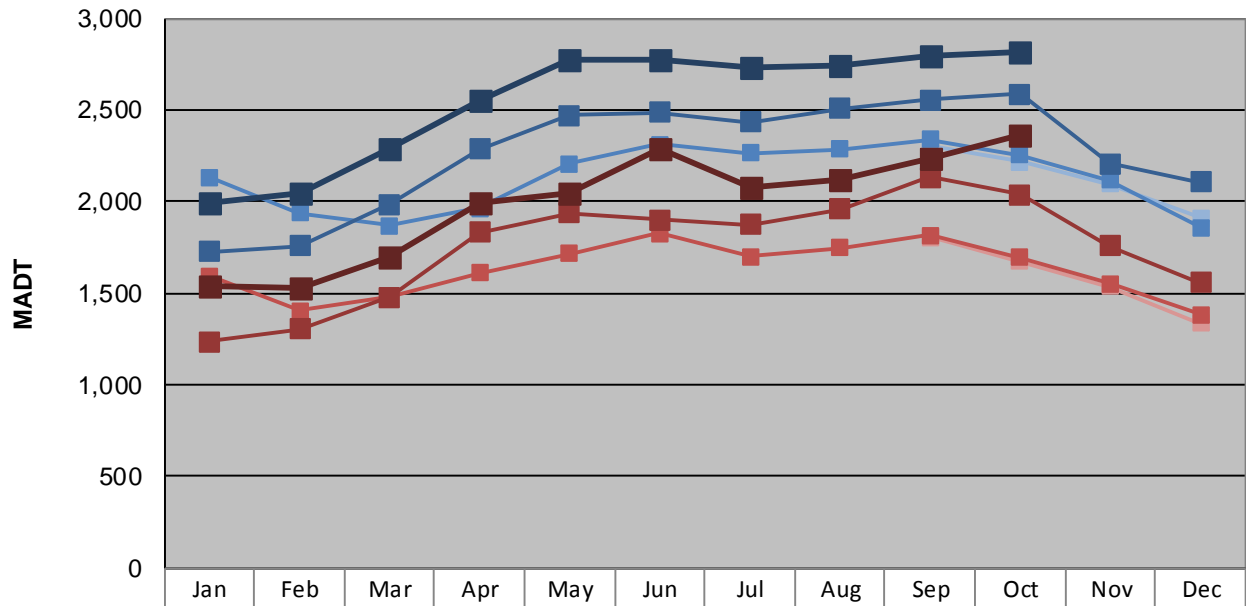
|  |                        |                                    |
|--|------------------------|------------------------------------|
| Station Measurement: VOLUME/SPEED/CLASS                      |                        |                                    |
| Route: CSAH 2  | Route Direction: E/W   | Lanes: 2                           |
| County: Rice   | Closest City: Lonsdale |                                    |
| Functional Class: Rural Minor Arterial                       |                        |                                    |
| Location: 3.4 MI W OF TH19 (INDEPENDENCE AVE), W OF LONSDALE |                        |                                    |
| Ref Post: 002+00.288   | True Mile: 2.288       | Sequence No. 33897                 |
| <b>Volume: 83,740</b>  |                        | <b>MADT: 2,701</b>                 |
| <b>Weekday (M-F) MADT: 2,816</b>                             |                        | <b>Weekend (Sa-Su) MADT: 2,362</b> |



Note: Began collecting data October 2012



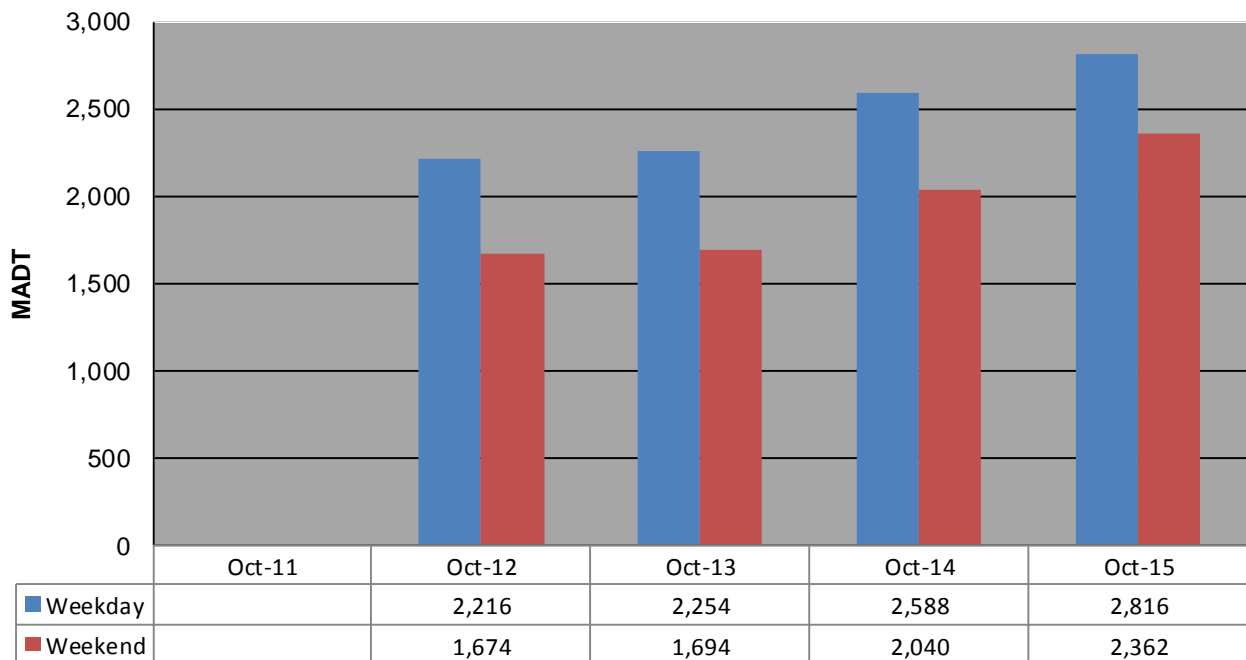
**Weekday (WD)/Weekend (WE) Monthly Average Daily Traffic**



|        | Jan   | Feb   | Mar   | Apr   | May   | Jun   | Jul   | Aug   | Sep   | Oct   | Nov   | Dec   |
|--------|-------|-------|-------|-------|-------|-------|-------|-------|-------|-------|-------|-------|
| '11 WD |       |       |       |       |       |       |       |       |       |       |       |       |
| '11 WE |       |       |       |       |       |       |       |       |       |       |       |       |
| '12 WD |       |       |       |       |       |       |       |       | 2,302 | 2,216 | 2,094 | 1,912 |
| '12 WE |       |       |       |       |       |       |       |       | 1,804 | 1,674 | 1,536 | 1,338 |
| '13 WD | 2,134 | 1,938 | 1,868 | 1,964 | 2,204 | 2,312 | 2,262 | 2,286 | 2,336 | 2,254 | 2,118 | 1,860 |
| '13 WE | 1,592 | 1,402 | 1,476 | 1,610 | 1,716 | 1,826 | 1,698 | 1,746 | 1,816 | 1,694 | 1,554 | 1,382 |
| '14 WD | 1,728 | 1,756 | 1,986 | 2,284 | 2,472 | 2,486 | 2,432 | 2,508 | 2,554 | 2,588 | 2,208 | 2,108 |
| '14 WE | 1,236 | 1,302 | 1,476 | 1,830 | 1,940 | 1,900 | 1,874 | 1,958 | 2,132 | 2,040 | 1,758 | 1,558 |
| '15 WD | 1,994 | 2,046 | 2,284 | 2,548 | 2,774 | 2,778 | 2,728 | 2,746 | 2,790 | 2,816 |       |       |
| '15 WE | 1,538 | 1,530 | 1,702 | 1,988 | 2,044 | 2,286 | 2,082 | 2,122 | 2,240 | 2,362 |       |       |

Note: 'Weekday' defined as Monday-Friday, 'Weekend' defined as Saturday-Sunday

**Weekday/Weekend Monthly Average Daily Traffic ('11-'15)**



|         | Oct-11 | Oct-12 | Oct-13 | Oct-14 | Oct-15 |
|---------|--------|--------|--------|--------|--------|
| Weekday |        | 2,216  | 2,254  | 2,588  | 2,816  |
| Weekend |        | 1,674  | 1,694  | 2,040  | 2,362  |