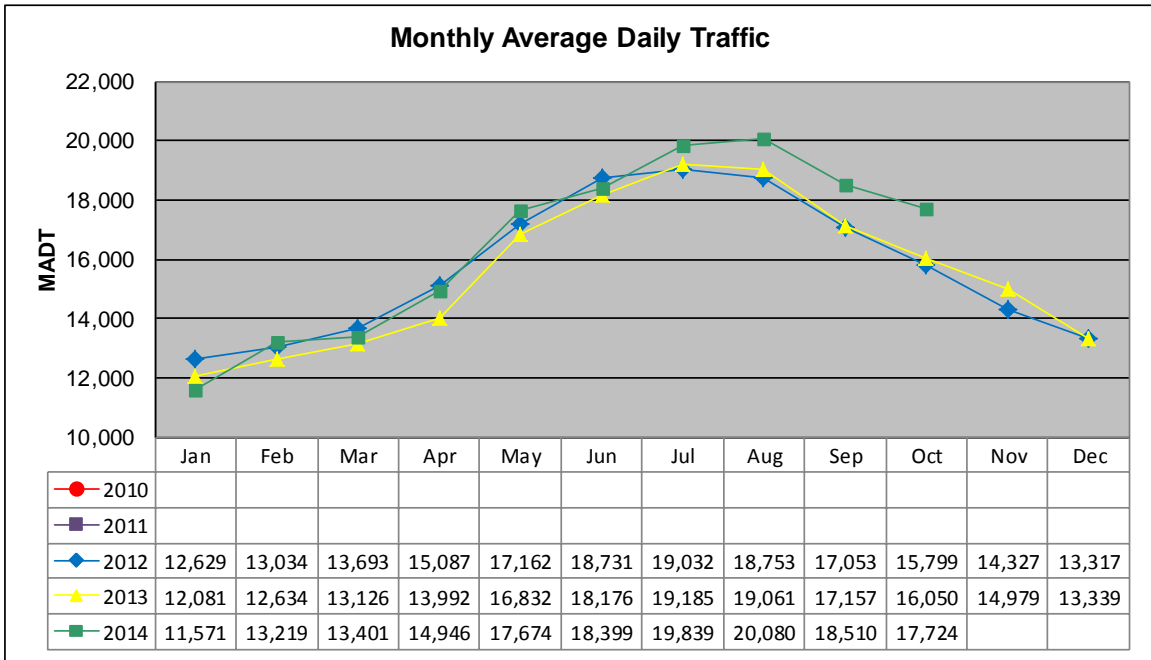


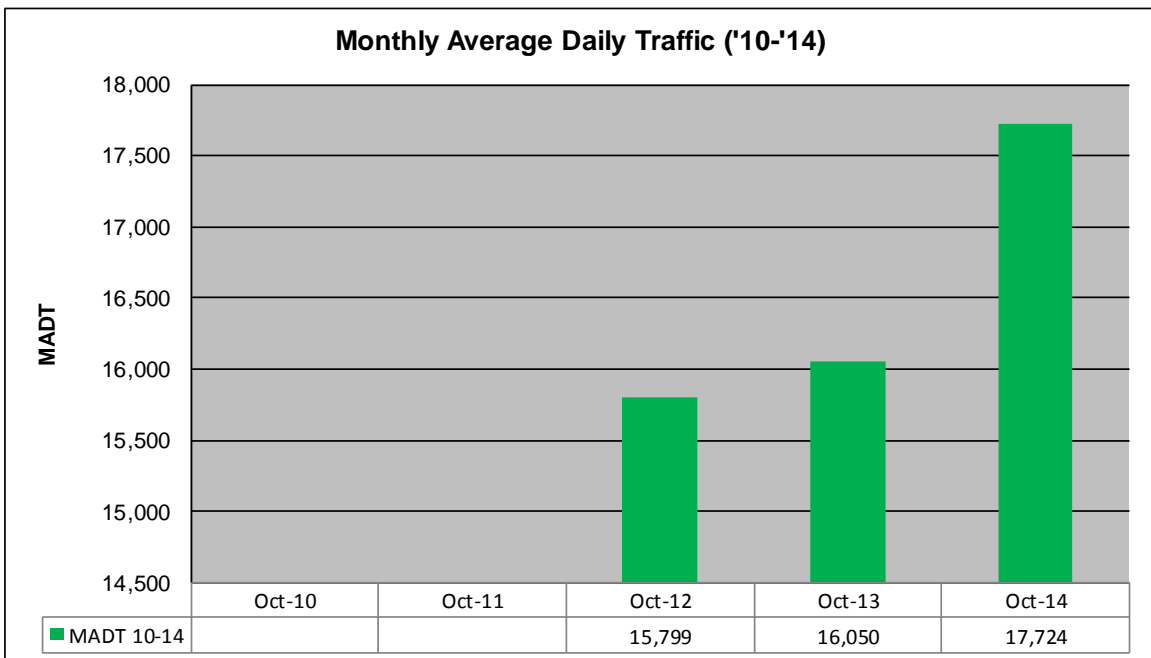
# MONTHLY REPORT, STATION NO. 43 (WIM)

## OCTOBER 2014

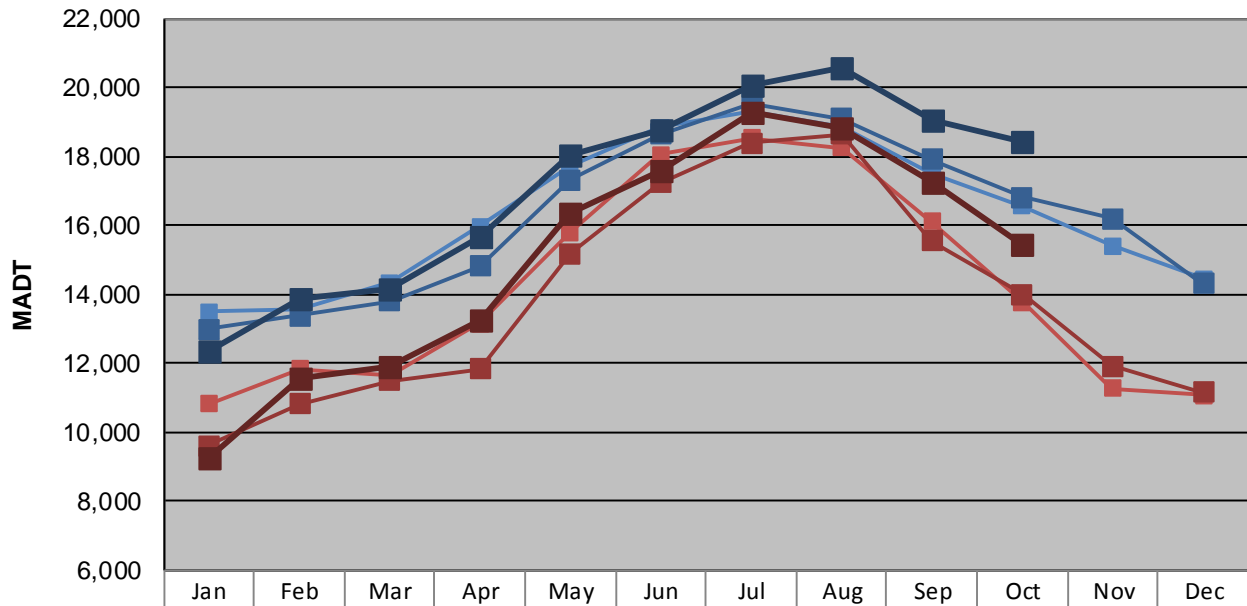
Station Measurement: VOLUME/SPEED/CLASS/WEIGHT		
Route: TH 10	Route Direction: E/W	Lanes: 4
County: Clay	Closest City: Glyndon	
Functional Class: Rural Principal Arterial - Other		
Location: .3 W OF CR68 (90TH ST S), W OF GLYNDON		
Ref Post: 007+00.510	True Mile: 7.323	Sequence No. 6733
<b>Volume: 549,455</b>		<b>MADT: 17,724</b>
<b>Weekday (M-F) MADT: 18,414</b>		<b>Weekend (Sa-Su) MADT: 15,474</b>



Note: Increase in traffic August 2014 due to detour from I-94



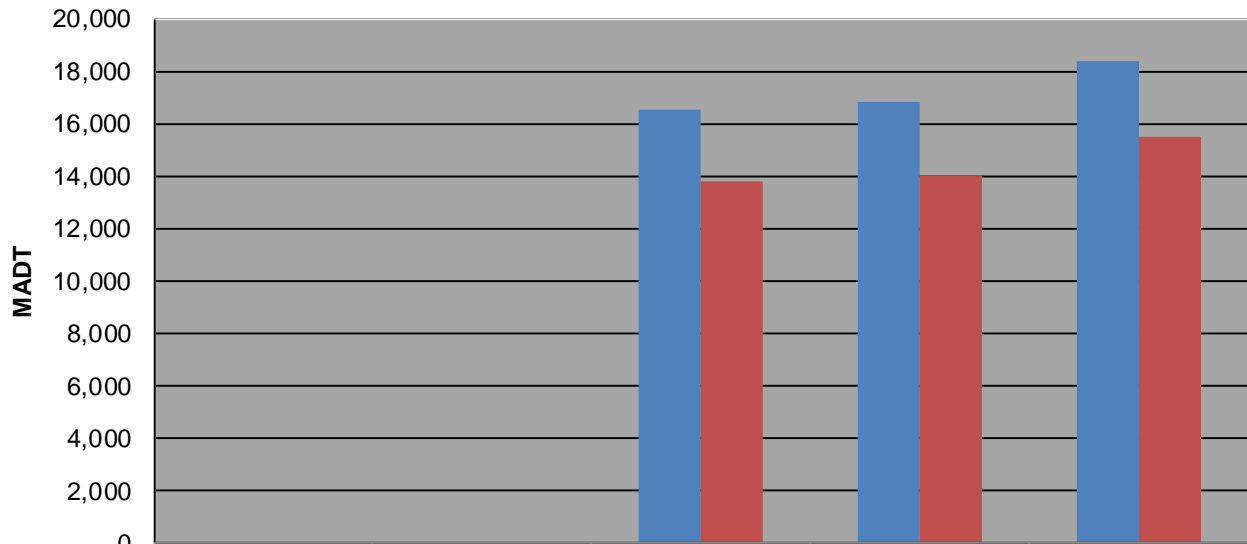
### Weekday (WD)/Weekend (WE) Monthly Average Daily Traffic



	Jan	Feb	Mar	Apr	May	Jun	Jul	Aug	Sep	Oct	Nov	Dec
'10 WD												
'10 WE												
'11 WD												
'11 WE												
'12 WD	13,492	13,568	14,344	15,974	17,730	18,836	19,294	18,828	17,528	16,566	15,410	14,444
'12 WE	10,818	11,822	11,672	13,150	15,784	18,054	18,534	18,254	16,104	13,774	11,258	11,060
'13 WD	12,974	13,364	13,794	14,814	17,320	18,646	19,552	19,098	17,898	16,812	16,178	14,312
'13 WE	9,614	10,810	11,496	11,828	15,192	17,236	18,386	18,636	15,550	14,008	11,920	11,146
'14 WD	12,360	13,874	14,176	15,648	18,050	18,788	20,070	20,550	19,060	18,414		
'14 WE	9,272	11,582	11,914	13,236	16,366	17,562	19,262	18,814	17,228	15,474		

Note: 'Weekday' defined as Monday-Friday, 'Weekend' defined as Saturday-Sunday

### Weekday/Weekend Monthly Average Daily Traffic ('10-'14)



MADT	Oct-10	Oct-11	Oct-12	Oct-13	Oct-14
Weekday			16,566	16,812	18,414
Weekend			13,774	14,008	15,474