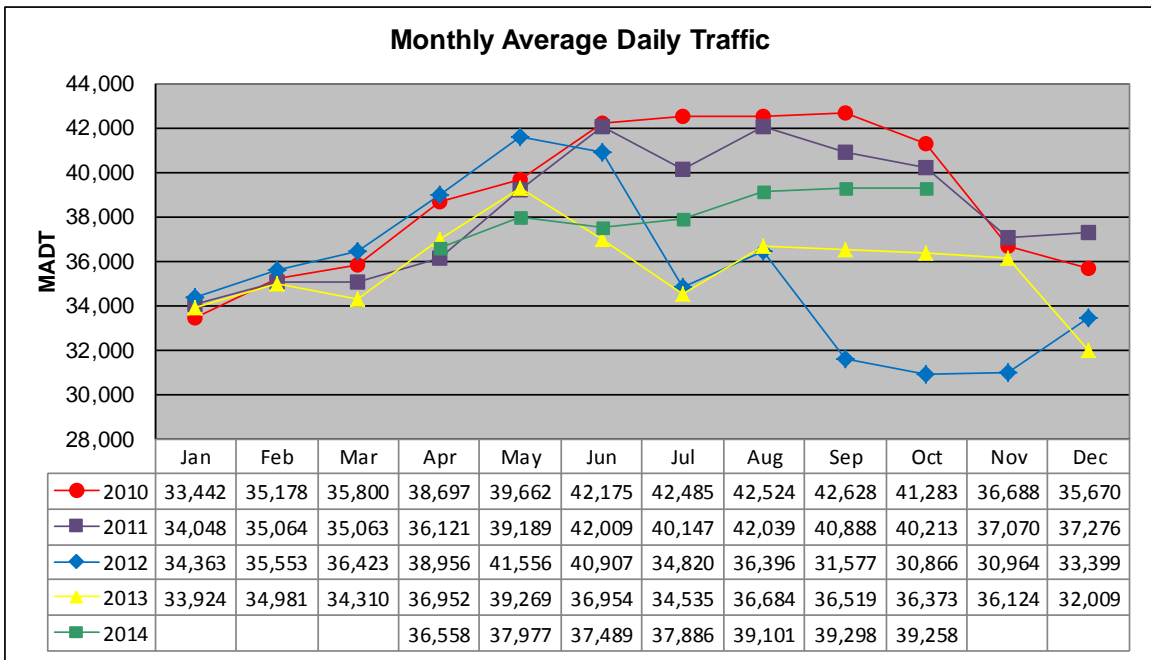


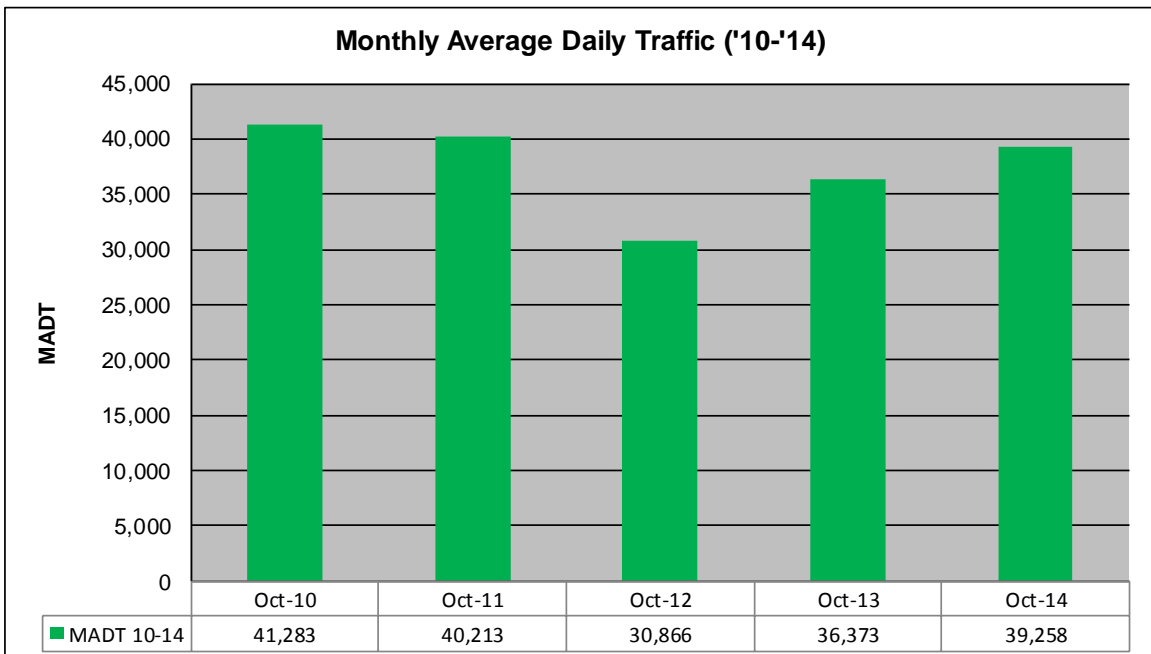
MONTHLY REPORT, STATION NO. 36 (WIM)

OCTOBER 2014

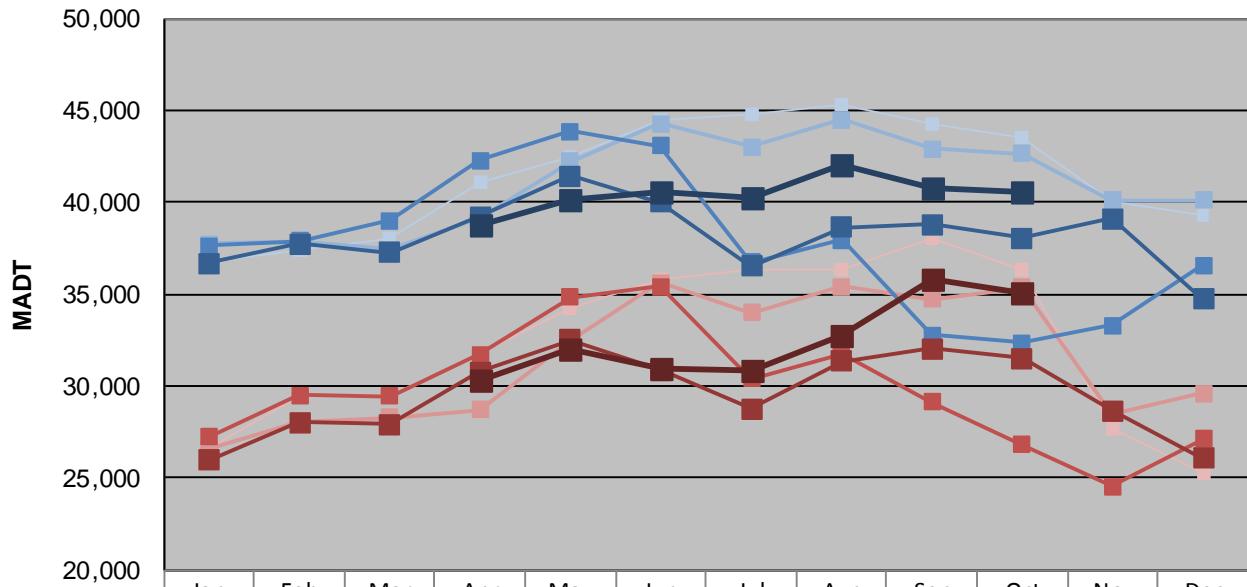
| | | |
|--|----------------------|-------------------------------------|
| Station Measurement: VOLUME/SPEED/CLASS/WEIGHT | | |
| Route: TH 36 | Route Direction: E/W | Lanes: 4 |
| County: Washington | | Closest City: Lake Elmo |
| Functional Class: Urban Other Principal Arterial | | |
| Location: .7 MI W OF CSAH17 (LAKE ELMO AVE N) IN LAKE ELMO | | |
| Ref Post: 014+00.983 | True Mile: 15.022 | Sequence No. 10237 |
| Volume: 1,216,984 | | MADT: 39,258 |
| Weekday (M-F) MADT: 40,584 | | Weekend (Sa-Su) MADT: 35,116 |



Note: Decrease in traffic July to November 2012 and June to October 2013 due to construction on TH 36... No data January to March 2014 due to site communication issues



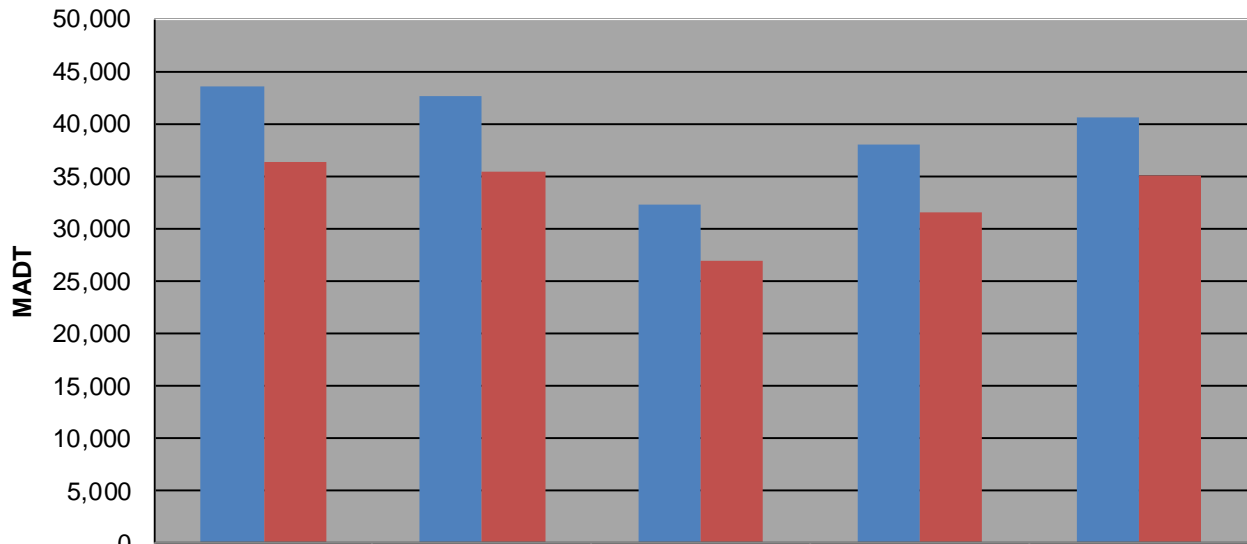
Weekday (WD)/Weekend (WE) Monthly Average Daily Traffic



| | Jan | Feb | Mar | Apr | May | Jun | Jul | Aug | Sep | Oct | Nov | Dec |
|--------|--------|--------|--------|--------|--------|--------|--------|--------|--------|--------|--------|--------|
| '10 WD | 36,740 | 37,440 | 38,028 | 41,068 | 42,430 | 44,474 | 44,768 | 45,296 | 44,208 | 43,518 | 40,026 | 39,304 |
| '10 WE | 26,596 | 29,524 | 29,486 | 31,814 | 34,236 | 35,862 | 36,288 | 36,384 | 38,008 | 36,352 | 27,658 | 25,246 |
| '11 WD | 37,762 | 37,868 | 37,442 | 39,140 | 42,238 | 44,278 | 43,012 | 44,476 | 42,930 | 42,636 | 40,122 | 40,136 |
| '11 WE | 26,542 | 28,054 | 28,308 | 28,732 | 32,490 | 35,618 | 33,986 | 35,436 | 34,730 | 35,378 | 28,488 | 29,632 |
| '12 WD | 37,628 | 37,912 | 39,018 | 42,298 | 43,856 | 43,042 | 36,742 | 37,956 | 32,800 | 32,330 | 33,298 | 36,576 |
| '12 WE | 27,234 | 29,510 | 29,464 | 31,718 | 34,812 | 35,436 | 30,384 | 31,700 | 29,130 | 26,834 | 24,532 | 27,104 |
| '13 WD | 36,708 | 37,754 | 37,242 | 39,212 | 41,436 | 39,990 | 36,500 | 38,638 | 38,780 | 38,044 | 39,094 | 34,722 |
| '13 WE | 25,992 | 28,050 | 27,924 | 30,754 | 32,510 | 30,882 | 28,790 | 31,332 | 32,020 | 31,522 | 28,646 | 26,068 |
| '14 WD | | | | 38,810 | 40,104 | 40,524 | 40,210 | 42,016 | 40,748 | 40,584 | | |
| '14 WE | | | | 30,304 | 32,034 | 30,912 | 30,830 | 32,790 | 35,832 | 35,116 | | |

Note: 'Weekday' defined as Monday-Friday, 'Weekend' defined as Saturday-Sunday

Weekday/Weekend Monthly Average Daily Traffic ('10-'14)



| | Oct-10 | Oct-11 | Oct-12 | Oct-13 | Oct-14 |
|---------|--------|--------|--------|--------|--------|
| Weekday | 43,518 | 42,636 | 32,330 | 38,044 | 40,584 |
| Weekend | 36,352 | 35,378 | 26,834 | 31,522 | 35,116 |