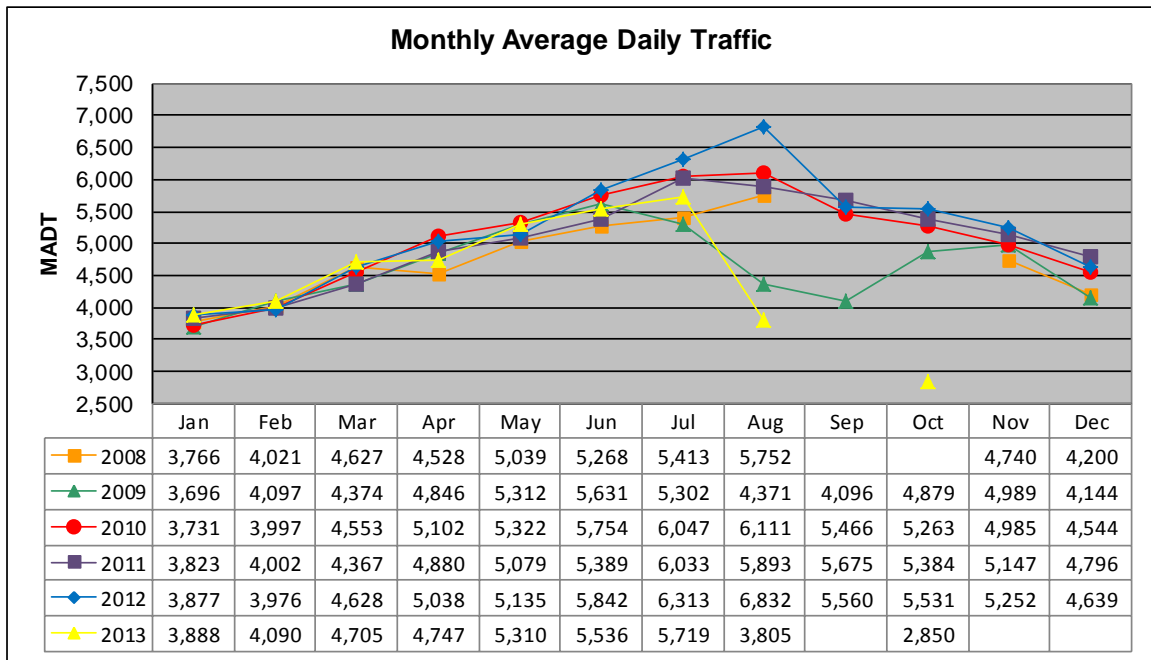


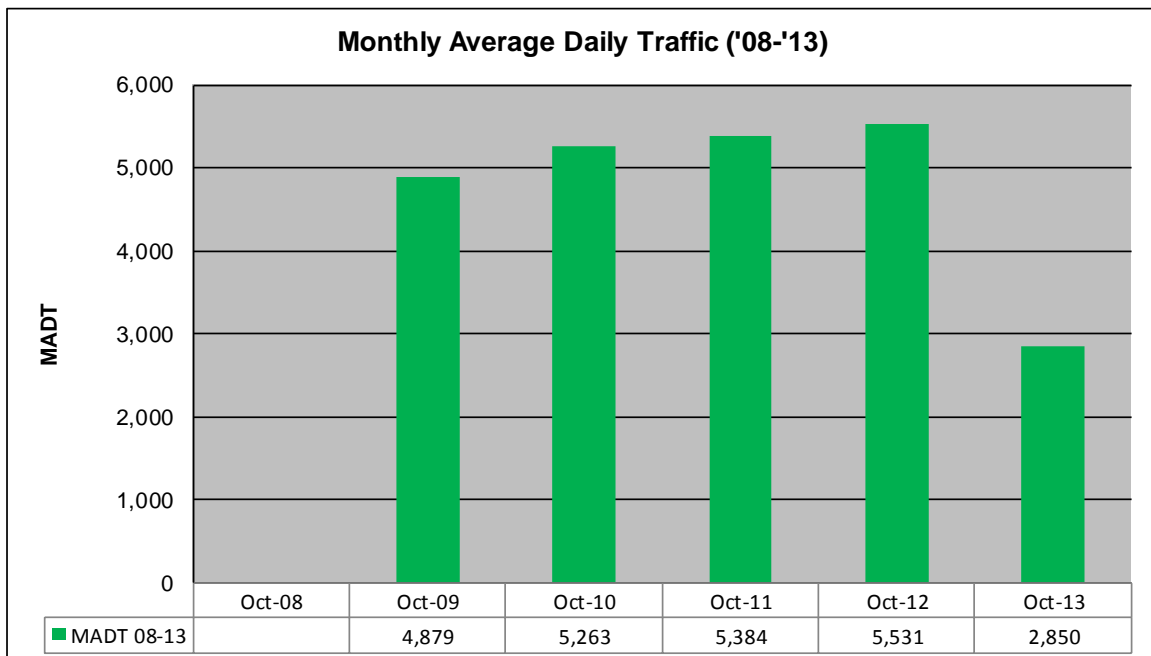
MONTHLY REPORT, STATION NO. 197 (ATR)

OCTOBER 2013

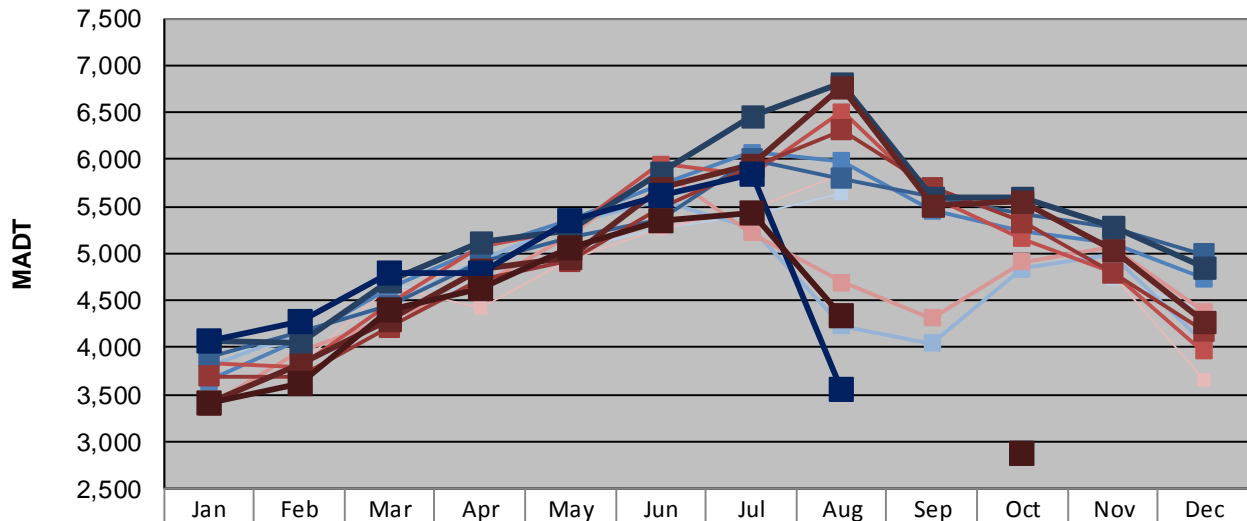
Station Measurement: VOLUME/SPEED/CLASS		
Route: TH 60	Route Direction: E/W	Lanes: 4
County: Watonwan	Closest City: St James	
Functional Class: Rural Principal Arterial - Other		
Location: .7 MI W OF W JCT OF TH4, SW OF ST JAMES		
Ref Post: 064+00.850	True Mile: 64.929	Sequence No. 9830
Volume: 88,359		MADT: 2,850
Weekday (M-F) MADT: 2,882		Weekend (Sa-Su) MADT: 2,884



Note: No data in September/October 2008 and September 2013; road closed for reconstruction... Decrease in traffic July to October 2009 and August/October 2013 due to construction on TH 60... Currently reports data from WIM station #27



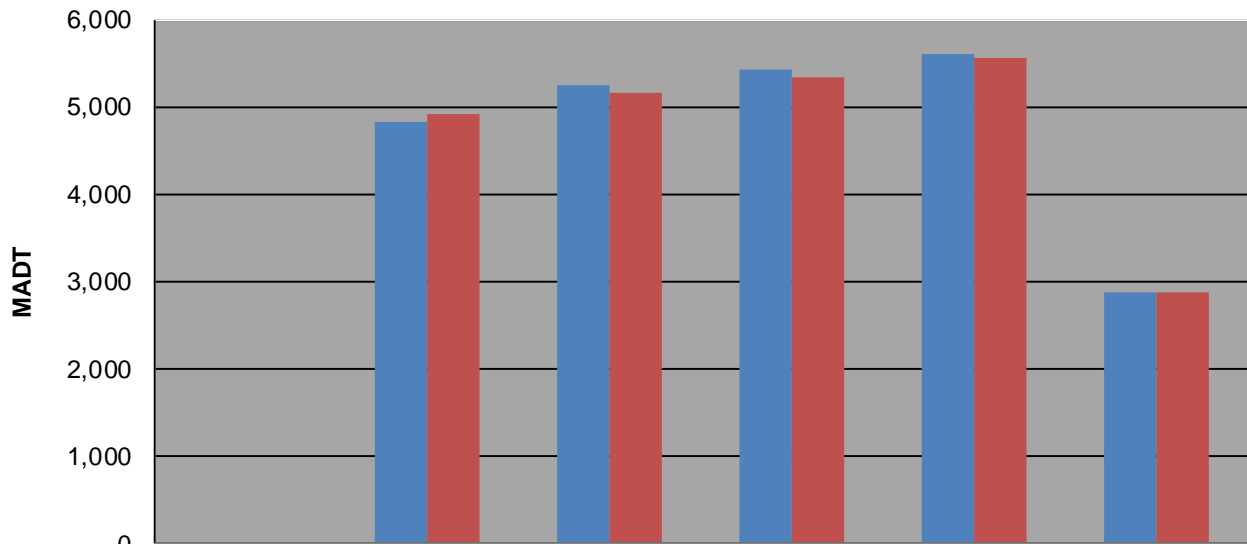
Weekday (WD)/Weekend (WE) Monthly Average Daily Traffic



	Jan	Feb	Mar	Apr	May	Jun	Jul	Aug	Sep	Oct	Nov	Dec
'08 WD	3,918	4,060	4,652	4,602	5,036	5,256	5,412	5,646			4,726	4,410
'08 WE	3,398	3,818	4,642	4,412	4,940	5,276	5,464	5,840			4,770	3,666
'09 WD	3,802	4,158	4,452	4,934	5,312	5,574	5,286	4,230	4,050	4,836	4,978	4,070
'09 WE	3,374	3,950	4,314	4,668	5,188	5,902	5,222	4,694	4,310	4,906	5,076	4,382
'10 WD	3,646	4,078	4,630	5,048	5,360	5,726	6,076	5,980	5,458	5,242	5,102	4,736
'10 WE	3,844	3,794	4,472	5,080	5,266	5,952	5,830	6,510	5,604	5,158	4,802	3,966
'11 WD	3,904	4,172	4,446	4,906	5,166	5,358	6,000	5,798	5,598	5,416	5,280	4,998
'11 WE	3,690	3,688	4,220	4,714	4,916	5,488	5,924	6,314	5,702	5,334	4,794	4,178
'12 WD	4,076	4,050	4,720	5,120	5,252	5,860	6,464	6,808	5,586	5,596	5,288	4,844
'12 WE	3,420	3,828	4,300	4,832	4,948	5,690	5,952	6,780	5,512	5,564	5,048	4,284
'13 WD	4,080	4,280	4,790	4,792	5,354	5,626	5,840	3,560		2,882		
'13 WE	3,412	3,614	4,396	4,624	5,064	5,356	5,436	4,336		2,884		

Note: 'Weekday' defined as Monday-Friday, 'Weekend' defined as Saturday-Sunday

Weekday/Weekend Monthly Average Daily Traffic ('08-'13)



	Oct-08	Oct-09	Oct-10	Oct-11	Oct-12	Oct-13
Weekday		4,836	5,242	5,416	5,596	2,882
Weekend		4,906	5,158	5,334	5,564	2,884