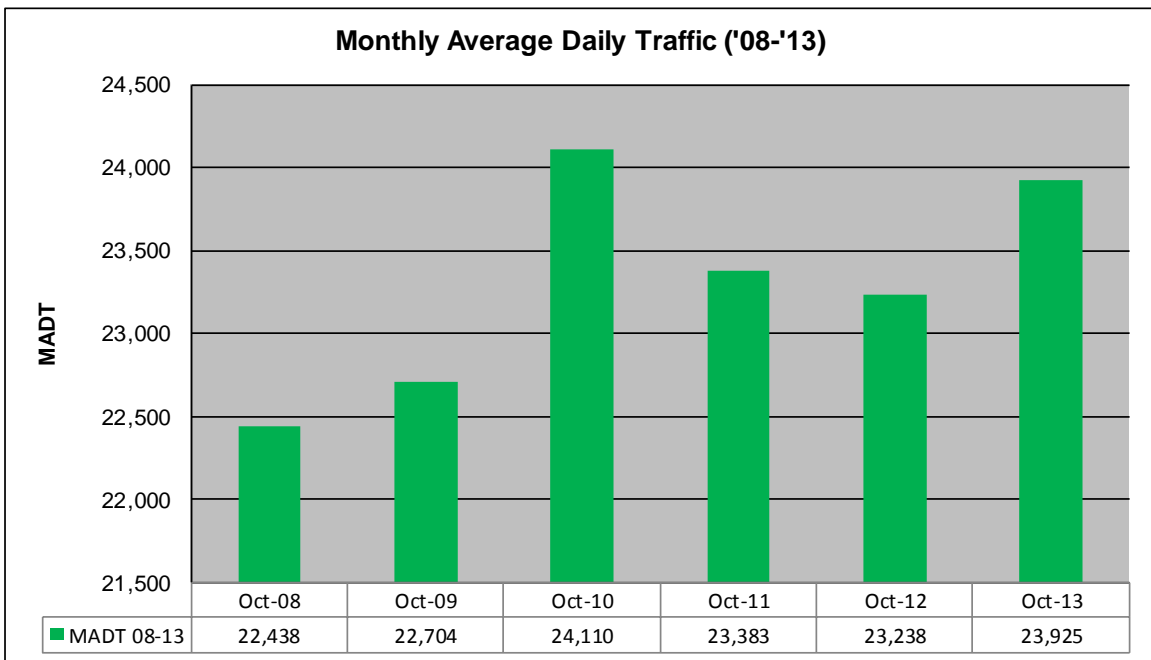
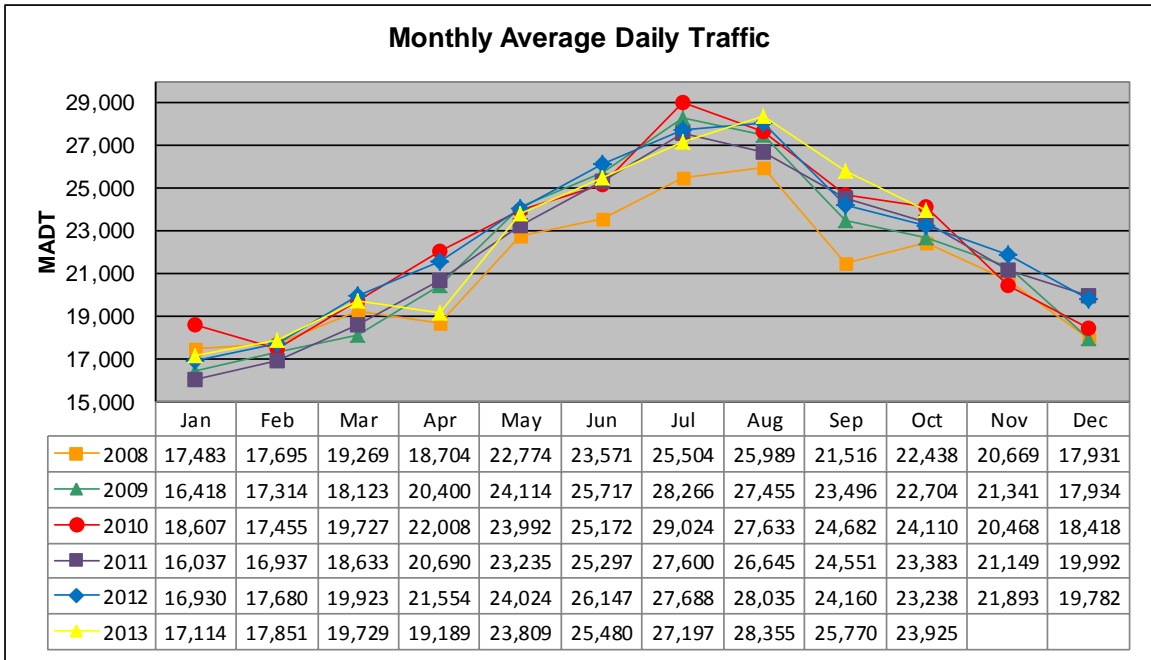


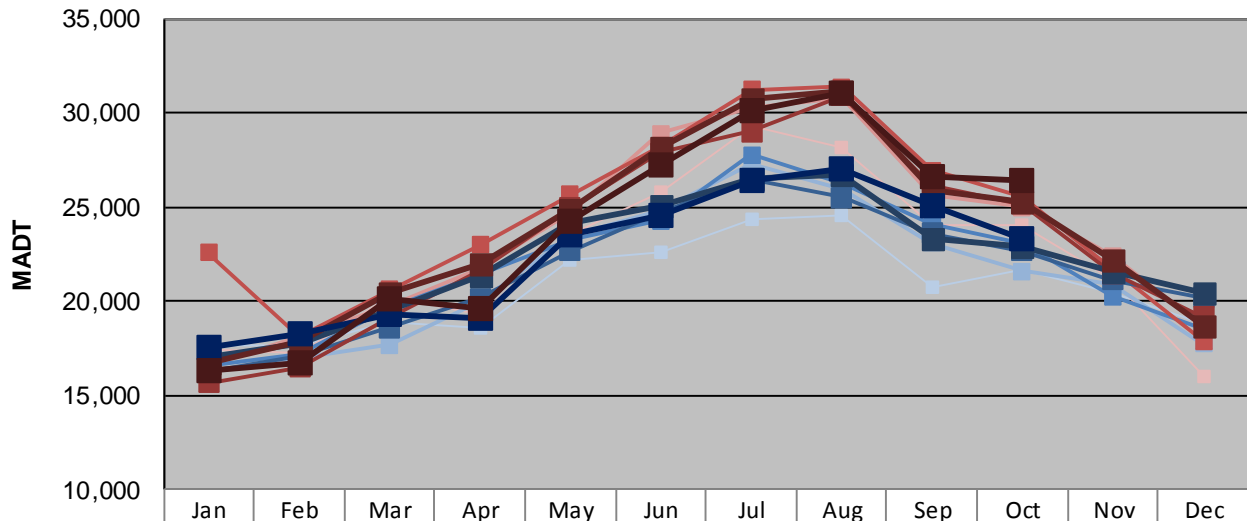
MONTHLY REPORT, STATION NO. 175 (ATR)

OCTOBER 2013

| | | |
|---|----------------------|-------------------------------------|
| Station Measurement: VOLUME/SPEED/CLASS | | |
| Route: I-94 | Route Direction: E/W | Lanes: 4 |
| County: Stearns | | Closest City: Sauk Centre |
| Functional Class: Rural Principal Arterial - Interstate | | |
| Location: E OF CR186, SE OF SAUK CENTRE | | |
| Ref Post: 128+00.640 | True Mile: 129 | Sequence No. 6776 |
| Volume: 741,689 | | MADT: 23,925 |
| Weekday (M-F) MADT: 23,294 | | Weekend (Sa-Su) MADT: 26,432 |



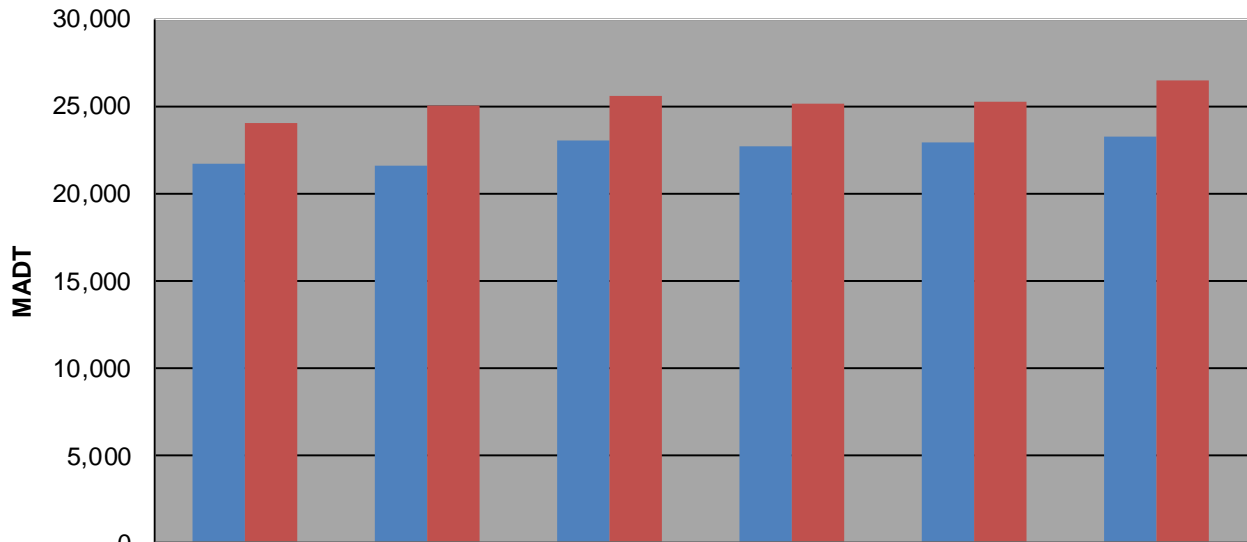
Weekday (WD)/Weekend (WE) Monthly Average Daily Traffic



| | Jan | Feb | Mar | Apr | May | Jun | Jul | Aug | Sep | Oct | Nov | Dec |
|--------|--------|--------|--------|--------|--------|--------|--------|--------|--------|--------|--------|--------|
| '08 WD | 17,632 | 17,640 | 18,892 | 18,612 | 22,220 | 22,590 | 24,322 | 24,596 | 20,758 | 21,634 | 20,424 | 18,778 |
| '08 WE | 17,468 | 17,230 | 20,202 | 19,334 | 23,544 | 25,804 | 29,318 | 28,140 | 23,996 | 24,006 | 21,158 | 16,004 |
| '09 WD | 16,250 | 16,990 | 17,690 | 19,996 | 23,470 | 24,812 | 27,292 | 25,962 | 23,082 | 21,596 | 20,886 | 17,716 |
| '09 WE | 16,608 | 18,124 | 19,782 | 21,722 | 24,748 | 28,900 | 30,282 | 30,802 | 25,590 | 24,972 | 22,414 | 18,636 |
| '10 WD | 16,558 | 17,176 | 19,654 | 21,360 | 23,278 | 24,294 | 27,794 | 26,204 | 24,058 | 23,038 | 20,232 | 18,514 |
| '10 WE | 22,574 | 18,154 | 20,616 | 22,978 | 25,660 | 28,222 | 31,238 | 31,362 | 26,966 | 25,576 | 21,692 | 17,896 |
| '11 WD | 16,268 | 17,098 | 18,604 | 20,144 | 22,674 | 24,682 | 26,496 | 25,512 | 23,592 | 22,670 | 21,126 | 20,210 |
| '11 WE | 15,682 | 16,506 | 19,172 | 21,600 | 24,946 | 27,886 | 29,012 | 30,902 | 26,176 | 25,134 | 21,466 | 19,162 |
| '12 WD | 17,052 | 17,750 | 19,542 | 21,332 | 24,098 | 25,038 | 26,492 | 26,704 | 23,316 | 22,876 | 21,600 | 20,452 |
| '12 WE | 16,686 | 17,850 | 20,448 | 21,946 | 24,838 | 28,190 | 30,716 | 31,094 | 25,850 | 25,272 | 22,150 | 18,670 |
| '13 WD | 17,496 | 18,296 | 19,320 | 19,130 | 23,508 | 24,602 | 26,410 | 26,994 | 25,098 | 23,294 | | |
| '13 WE | 16,358 | 16,740 | 20,080 | 19,656 | 24,222 | 27,238 | 30,084 | 31,086 | 26,628 | 26,432 | | |

Note: 'Weekday' defined as Monday-Friday, 'Weekend' defined as Saturday-Sunday

Weekday/Weekend Monthly Average Daily Traffic ('08-'13)



| | | | | | | |
|---------|--------|--------|--------|--------|--------|--------|
| Weekday | 21,634 | 21,596 | 23,038 | 22,670 | 22,876 | 23,294 |
| Weekend | 24,006 | 24,972 | 25,576 | 25,134 | 25,272 | 26,432 |