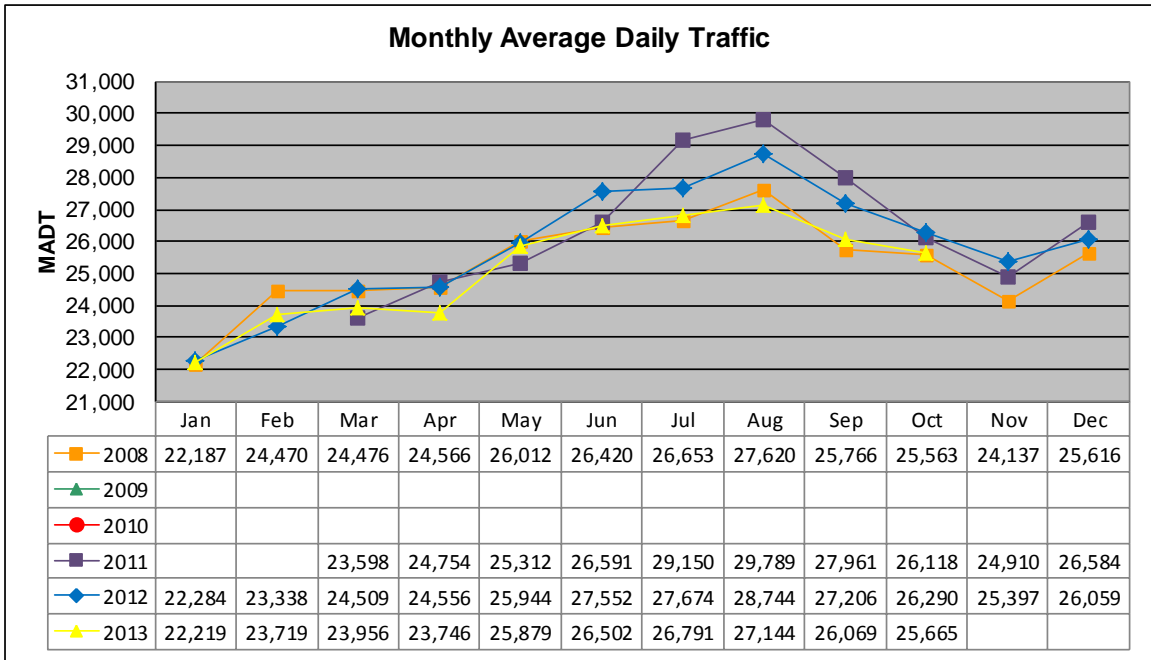


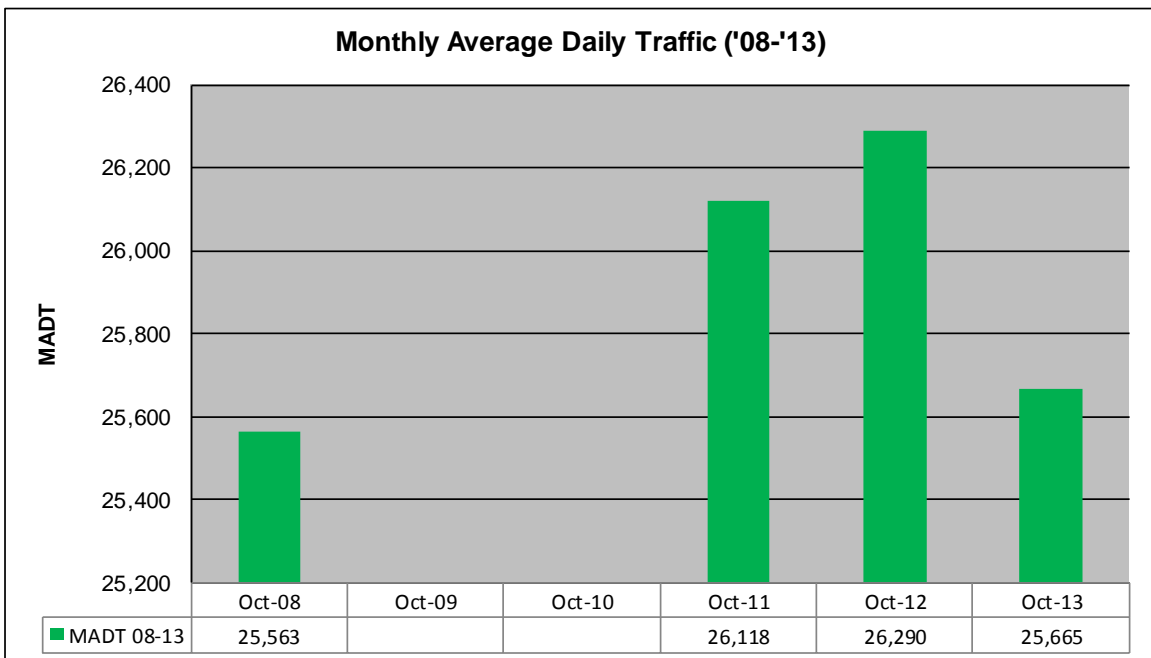
# MONTHLY REPORT, STATION NO. 110 (ATR)

## OCTOBER 2013

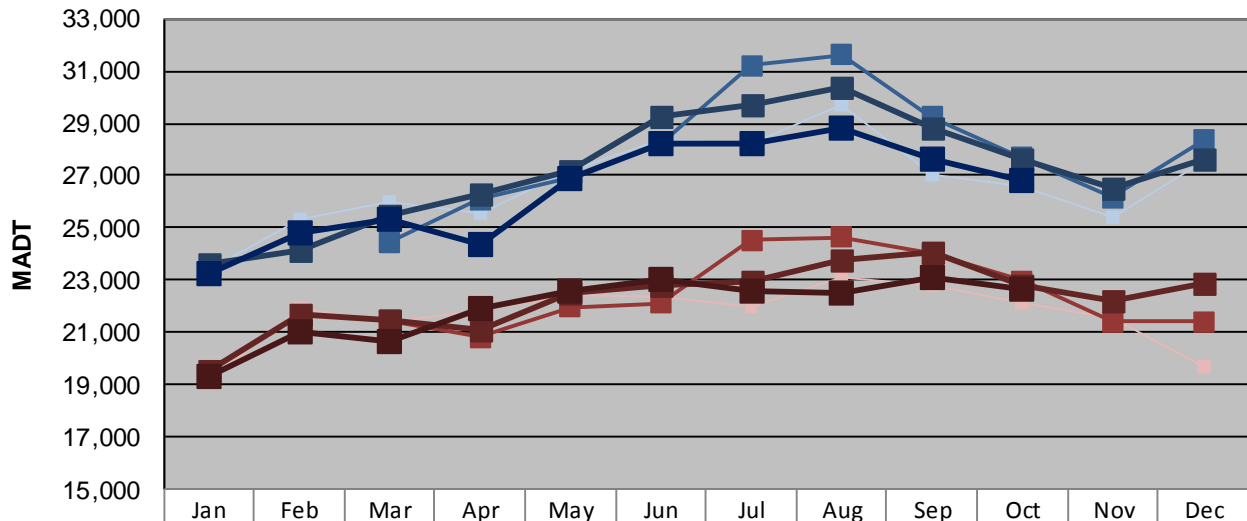
|  |                      |                                     |
|--|----------------------|-------------------------------------|
| Station Measurement: VOLUME                      |                      |                                     |
| Route: TH 53                                     | Route Direction: N/S | Lanes: 4                            |
| County: St Louis                                 |                      | Closest City: Duluth                |
| Functional Class: Urban Other Principal Arterial |                      |                                     |
| Location: SE OF CSAH6 (MAPLE GROVE RD) IN DULUTH |                      |                                     |
| Ref Post: 005+00.000                             | True Mile: 6.129     | Sequence No. 9827                   |
| <b>Volume: 795,623</b>                           |                      | <b>MADT: 25,665</b>                 |
| <b>Weekday (M-F) MADT: 26,790</b>                |                      | <b>Weekend (Sa-Su) MADT: 22,688</b> |



Note: No data January 2009 to February 2011 due to sensors destroyed by construction



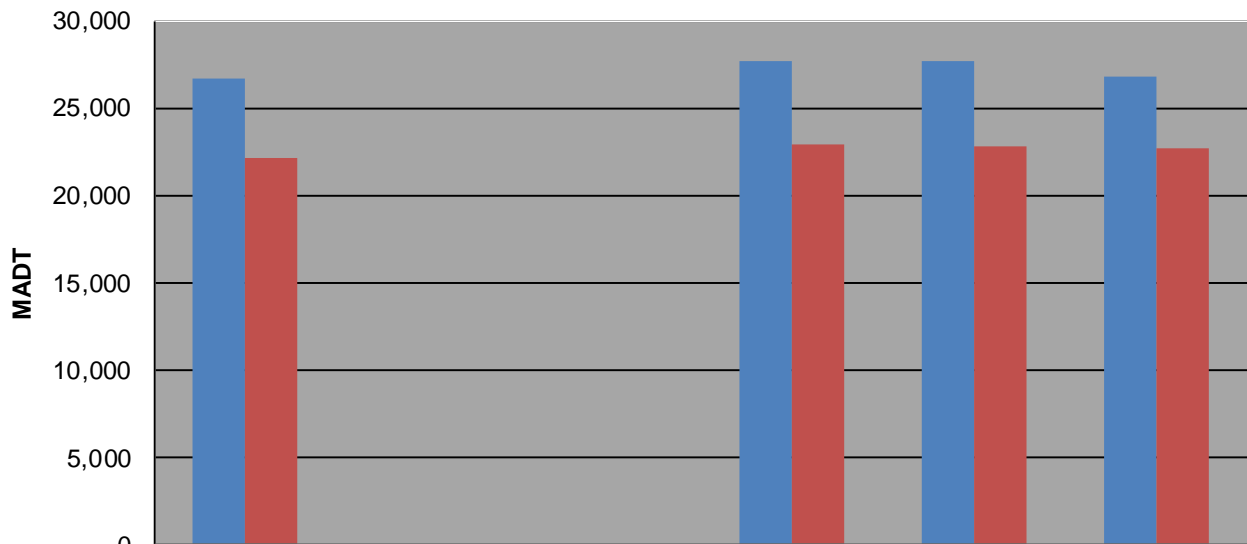
### Weekday (WD)/Weekend (WE) Monthly Average Daily Traffic



|        | Jan    | Feb    | Mar    | Apr    | May    | Jun    | Jul    | Aug    | Sep    | Oct    | Nov    | Dec    |
|--------|--------|--------|--------|--------|--------|--------|--------|--------|--------|--------|--------|--------|
| '08 WD | 23,372 | 25,298 | 26,014 | 25,540 | 27,192 | 28,360 | 28,236 | 29,678 | 27,016 | 26,626 | 25,430 | 27,556 |
| '08 WE | 19,146 | 21,936 | 21,380 | 21,834 | 22,418 | 22,382 | 21,972 | 23,116 | 22,774 | 22,176 | 21,550 | 19,710 |
| '09 WD |        |        |        |        |        |        |        |        |        |        |        |        |
| '09 WE |        |        |        |        |        |        |        |        |        |        |        |        |
| '10 WD |        |        |        |        |        |        |        |        |        |        |        |        |
| '10 WE |        |        |        |        |        |        |        |        |        |        |        |        |
| '11 WD |        |        | 24,442 | 26,078 | 26,914 | 28,220 | 31,214 | 31,618 | 29,224 | 27,690 | 26,170 | 28,352 |
| '11 WE |        |        | 21,462 | 20,822 | 21,980 | 22,136 | 24,544 | 24,660 | 24,016 | 22,956 | 21,422 | 21,420 |
| '12 WD | 23,632 | 24,120 | 25,494 | 26,276 | 27,158 | 29,258 | 29,718 | 30,394 | 28,780 | 27,664 | 26,524 | 27,662 |
| '12 WE | 19,536 | 21,706 | 21,474 | 21,136 | 22,510 | 22,798 | 22,988 | 23,756 | 24,058 | 22,784 | 22,184 | 22,884 |
| '13 WD | 23,276 | 24,804 | 25,332 | 24,360 | 26,868 | 28,252 | 28,236 | 28,798 | 27,596 | 26,790 |        |        |
| '13 WE | 19,322 | 21,012 | 20,654 | 21,928 | 22,556 | 23,004 | 22,620 | 22,520 | 23,094 | 22,688 |        |        |

Note: 'Weekday' defined as Monday-Friday, 'Weekend' defined as Saturday-Sunday

### Weekday/Weekend Monthly Average Daily Traffic ('08-'13)



|         | Oct-08 | Oct-09 | Oct-10 | Oct-11 | Oct-12 | Oct-13 |
|---------|--------|--------|--------|--------|--------|--------|
| Weekday | 26,626 |        |        | 27,690 | 27,664 | 26,790 |
| Weekend | 22,176 |        |        | 22,956 | 22,784 | 22,688 |