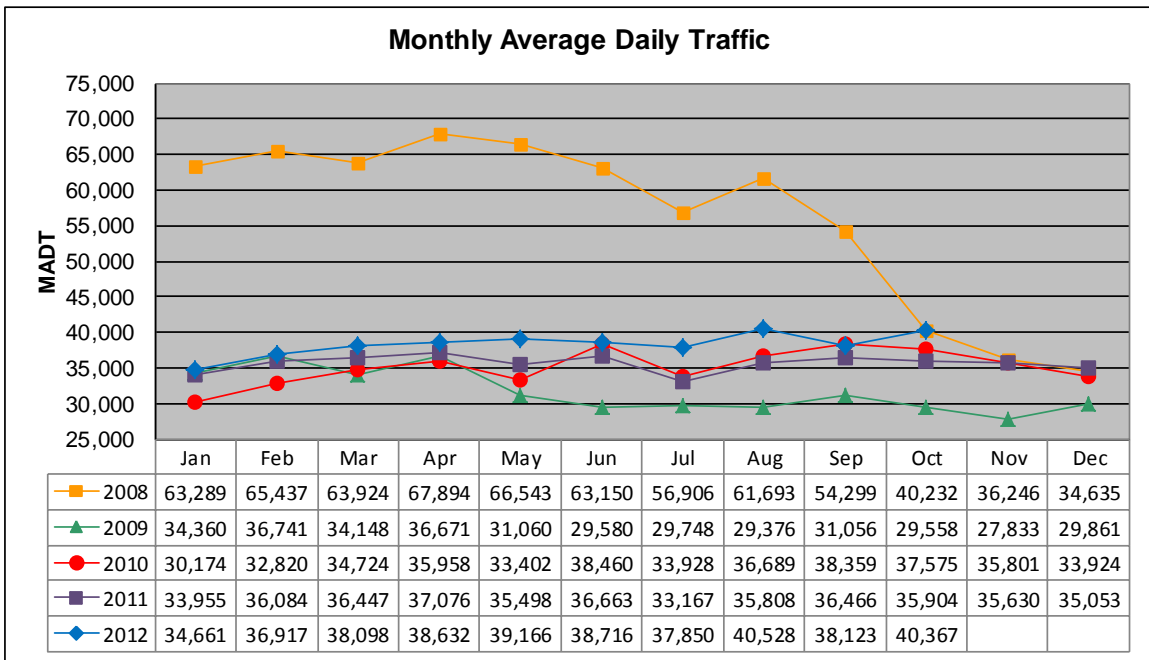


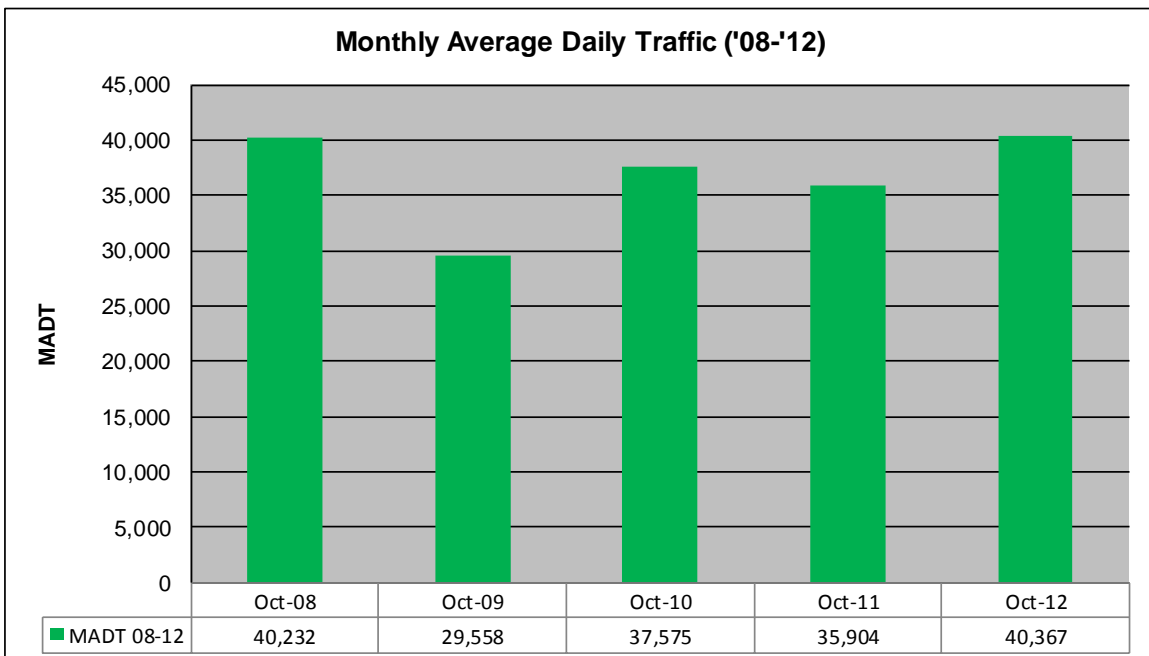
MONTHLY REPORT, STATION NO. 389 (ATR)

OCTOBER 2012

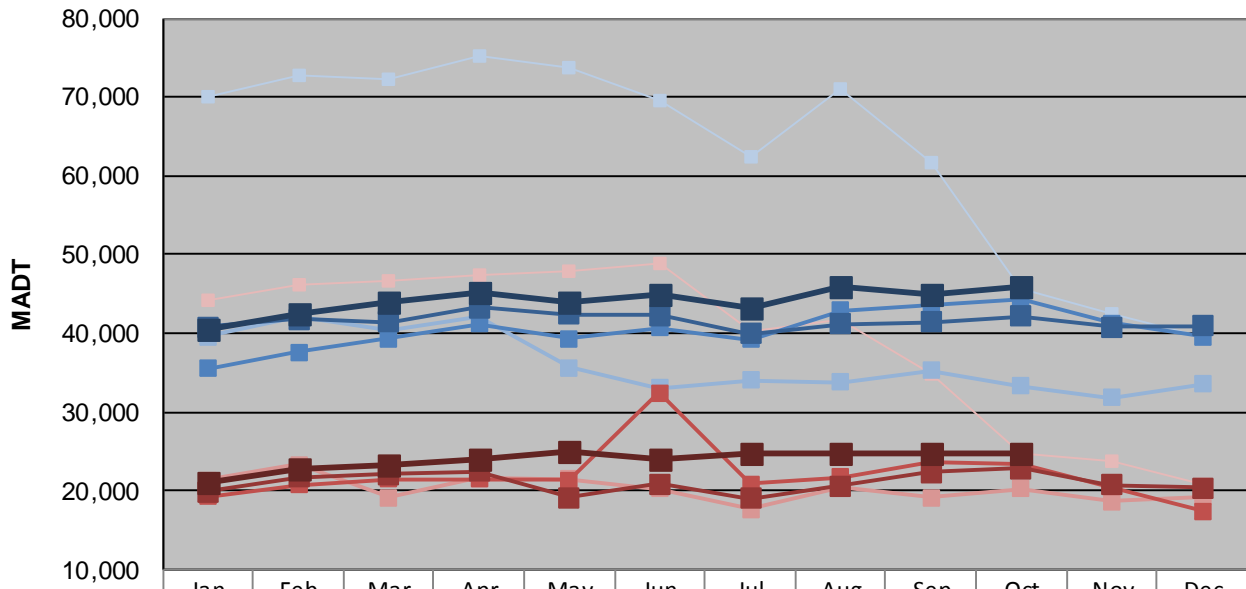
Station Measurement: VOLUME		
Route: TH 280	Route Direction: N/S	Lanes: 4
County: Ramsey		Closest City: Lauderdale
Functional Class: Urban Principal Arterial - Other Freeways or Expressways		
Location: N OF CSAH30 (LARPEN TEUR AVE W) IN LAUDERDALE		
Ref Post: 002+00.650	True Mile: 2.65	Sequence No. 9877
Volume: 1,251,371		MADT: 40,367
Weekday (M-F) MADT: 45,878		Weekend (Sa-Su) MADT: 24,700



Note: Increase in traffic January to August 2008 due to I-35W bridge collapse and detour ... Traffic returned to expected volume October 2008 due to reopening of I-35W bridge



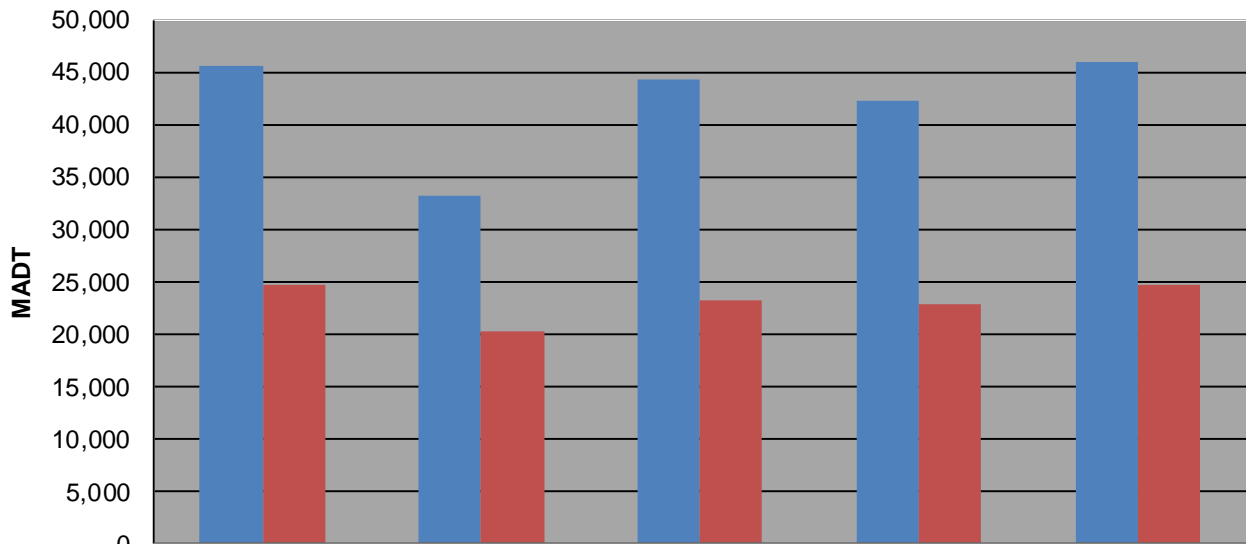
Weekday (WD)/Weekend (WE) Monthly Average Daily Traffic



	Jan	Feb	Mar	Apr	May	Jun	Jul	Aug	Sep	Oct	Nov	Dec
'08 WD	69,966	72,664	72,332	75,232	73,744	69,436	62,330	71,150	61,640	45,540	42,496	39,418
'08 WE	44,284	46,058	46,678	47,462	47,830	48,936	40,338	41,824	34,888	24,698	23,746	20,668
'09 WD	39,628	42,126	40,480	42,102	35,572	33,058	33,970	33,718	35,282	33,268	31,794	33,474
'09 WE	21,354	23,280	19,144	21,594	21,422	20,222	17,632	20,338	19,176	20,194	18,668	19,232
'10 WD	35,528	37,650	39,374	41,194	39,374	40,636	39,142	42,916	43,512	44,322	41,238	39,622
'10 WE	19,212	20,744	21,468	21,456	21,376	32,414	20,810	21,772	23,700	23,294	20,434	17,458
'11 WD	40,794	41,840	41,410	43,210	42,452	42,330	39,968	41,126	41,468	42,214	40,818	40,862
'11 WE	19,904	21,668	22,134	22,422	19,158	20,878	18,984	20,616	22,266	22,790	20,724	20,300
'12 WD	40,612	42,396	43,964	45,184	43,896	44,960	43,240	45,950	44,832	45,878		
'12 WE	20,954	22,658	23,188	23,878	24,994	23,952	24,630	24,784	24,704	24,700		

Note: 'Weekday' defined as Monday-Friday, 'Weekend' defined as Saturday-Sunday

Weekday/Weekend Monthly Average Daily Traffic ('08-'12)



	Oct-08	Oct-09	Oct-10	Oct-11	Oct-12
Weekday	45,540	33,268	44,322	42,214	45,878
Weekend	24,698	20,194	23,294	22,790	24,700