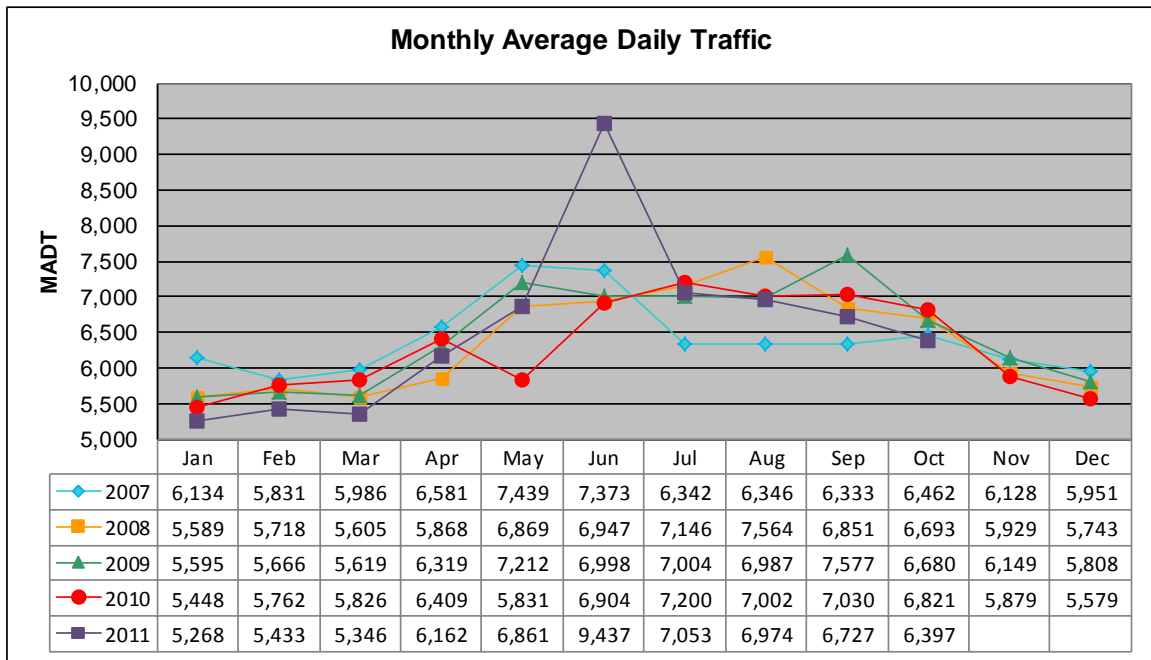


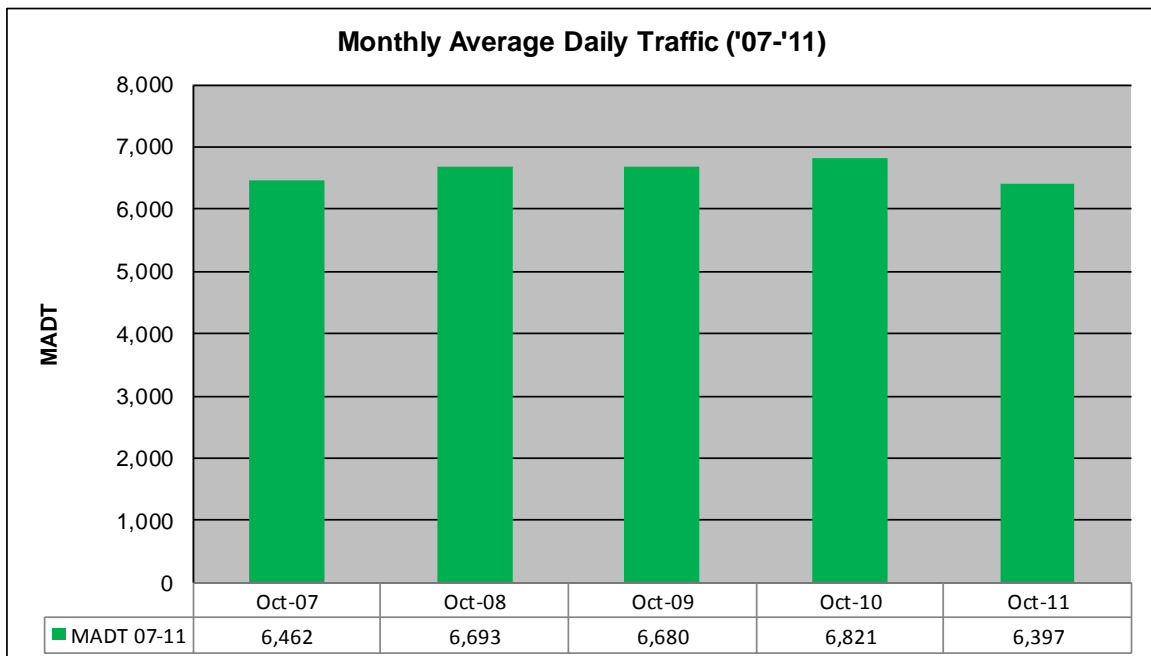
MONTHLY REPORT, STATION NO. 386 (ATR)

OCTOBER 2011

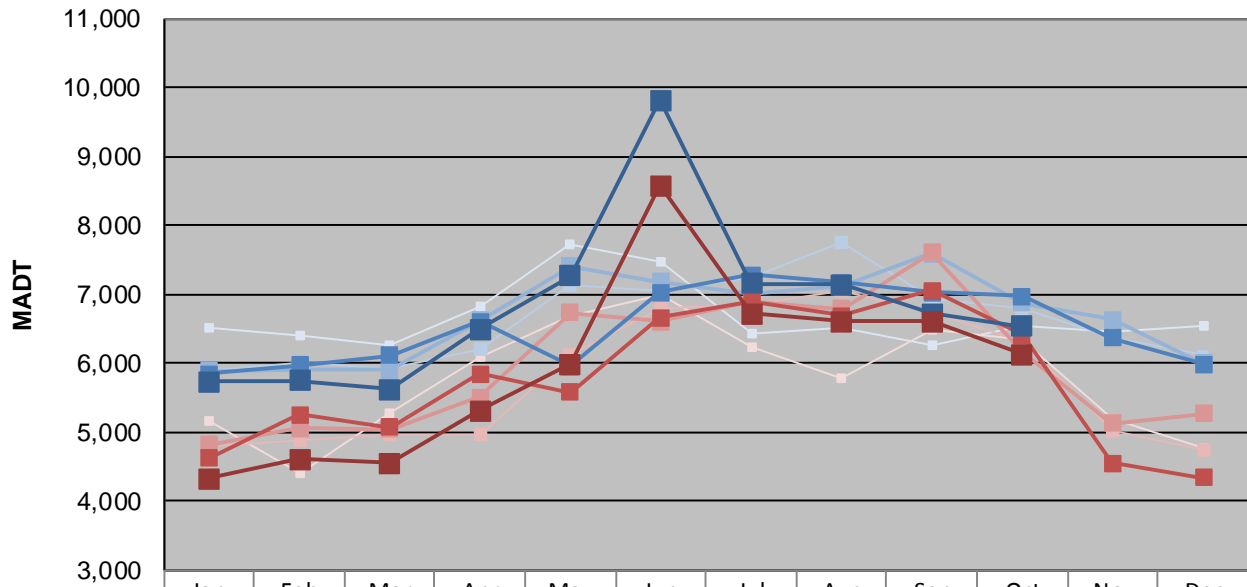
Station Measurement: VOLUME		
Route: TH 97	Route Direction: N/S	Lanes: 2
County: Washington		Closest City: Scandia
Functional Class: Rural Minor Arterial		
Location: E OF CSAH1 (LOFTON AVE N) IN SCANDIA		
Ref Post: 008+00.844	True Mile: 8.807	Sequence No. 9875
Volume: 198,307		MADT: 6,397
Weekday (M-F) MADT: 6,528		Weekend (Sa-Su) MADT: 6,126



Note: Decrease in traffic July to September 2007 due to construction on TH 97... Decrease in traffic May 2010 due to construction on I-35... Increase in traffic June 2011 due to detours from TH 8 and I-35



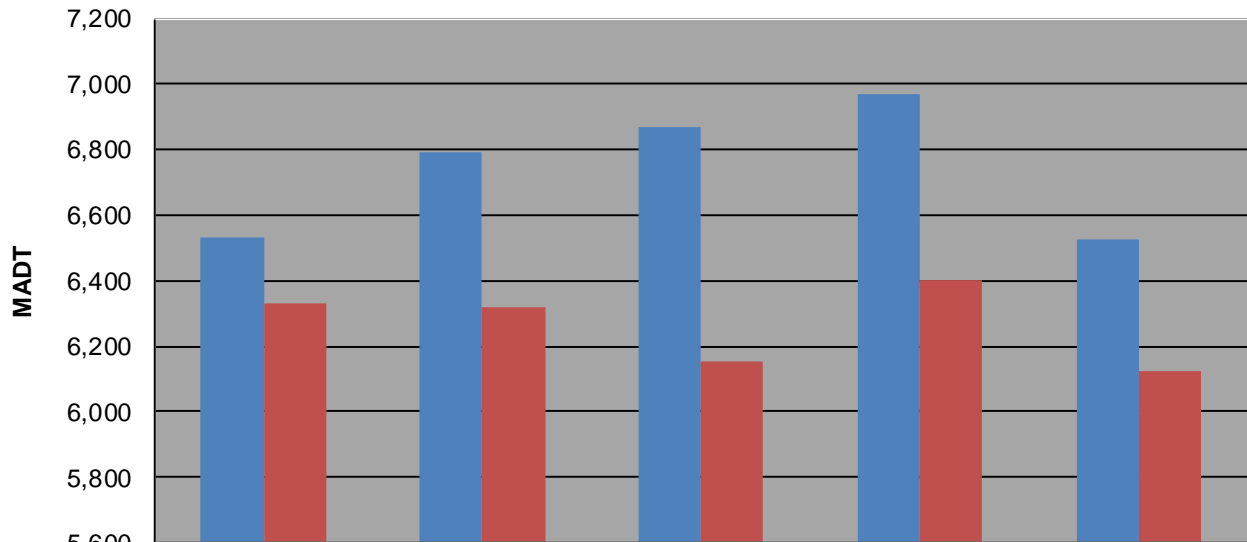
Weekday (WD)/Weekend (WE) Monthly Average Daily Traffic



	Jan	Feb	Mar	Apr	May	Jun	Jul	Aug	Sep	Oct	Nov	Dec
'07 WD	6,510	6,408	6,270	6,822	7,726	7,482	6,420	6,518	6,264	6,530	6,462	6,530
'07 WE	5,154	4,388	5,276	6,086	6,668	6,998	6,218	5,778	6,472	6,332	5,176	4,778
'08 WD	5,888	6,006	5,924	6,192	7,132	7,046	7,248	7,764	6,936	6,794	6,378	6,114
'08 WE	4,782	4,882	4,974	4,970	6,128	6,782	6,858	7,054	6,726	6,318	5,032	4,738
'09 WD	5,888	5,908	5,898	6,612	7,402	7,186	7,000	7,106	7,594	6,868	6,626	6,002
'09 WE	4,822	5,060	5,040	5,506	6,732	6,598	6,902	6,782	7,606	6,154	5,124	5,268
'10 WD	5,840	5,964	6,110	6,598	5,950	7,020	7,274	7,164	7,024	6,972	6,370	5,984
'10 WE	4,616	5,260	5,066	5,844	5,582	6,654	6,880	6,690	7,050	6,402	4,546	4,338
'11 WD	5,728	5,752	5,620	6,486	7,266	9,814	7,154	7,138	6,720	6,528		
'11 WE	4,326	4,608	4,556	5,314	5,978	8,570	6,710	6,602	6,608	6,126		

Note: 'Weekday' defined as Monday-Friday, 'Weekend' defined as Saturday-Sunday

Weekday/Weekend Monthly Average Daily Traffic ('07-'11)



	Oct-07	Oct-08	Oct-09	Oct-10	Oct-11
Weekday	6,530	6,794	6,868	6,972	6,528
Weekend	6,332	6,318	6,154	6,402	6,126