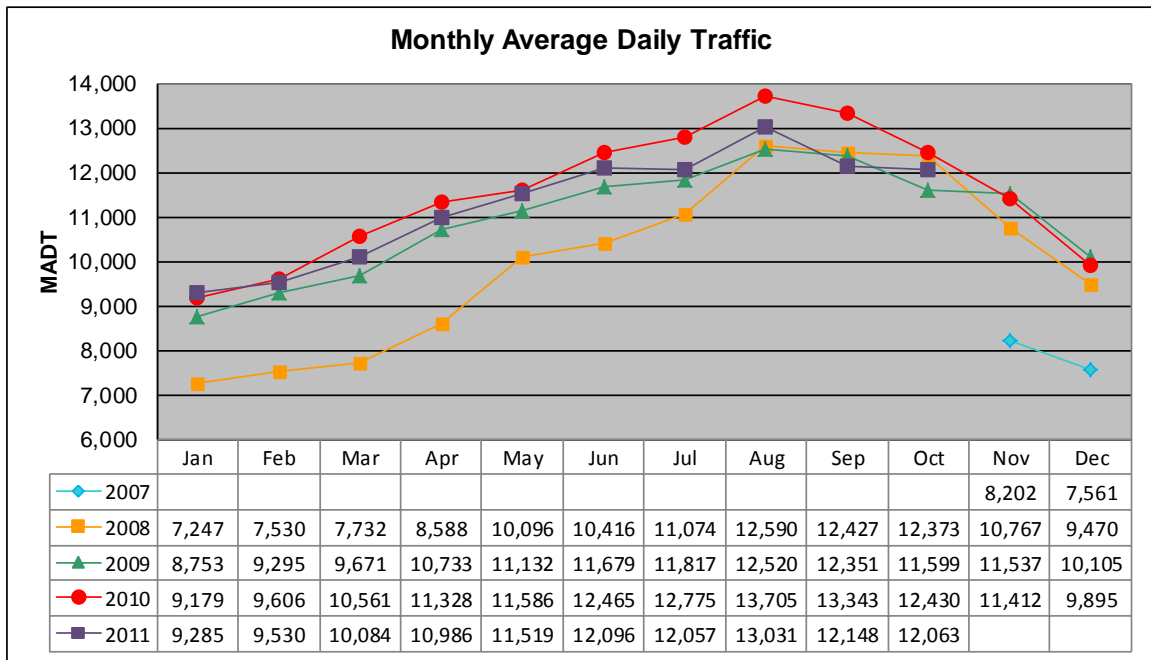


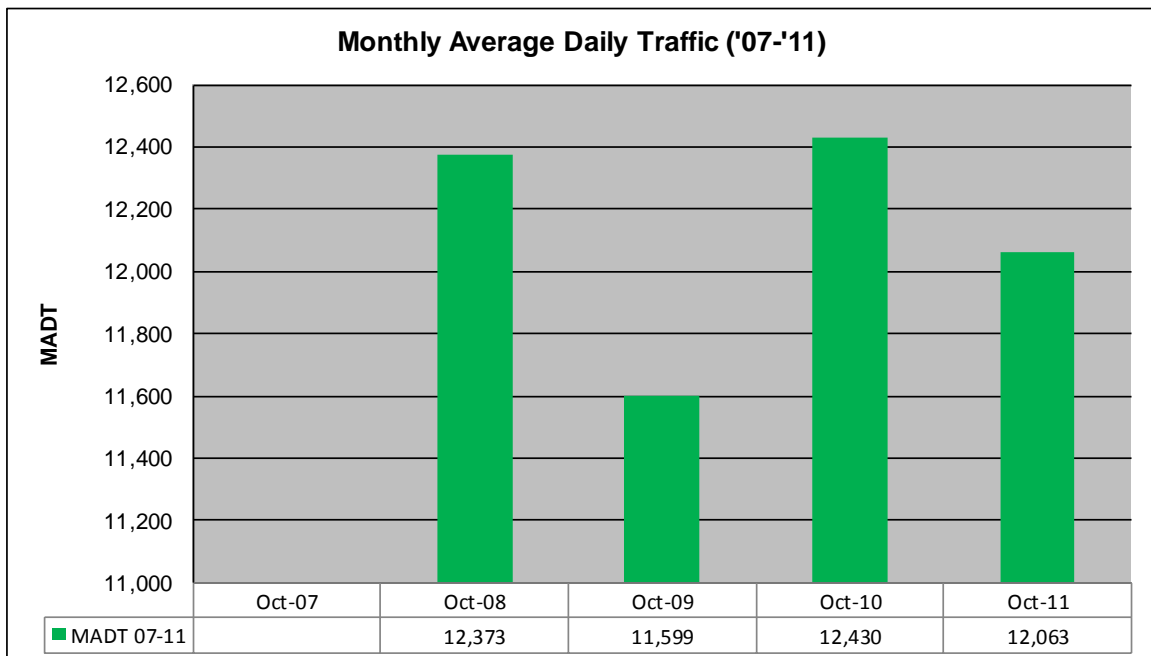
MONTHLY REPORT, STATION NO. 381 (ATR)

OCTOBER 2011

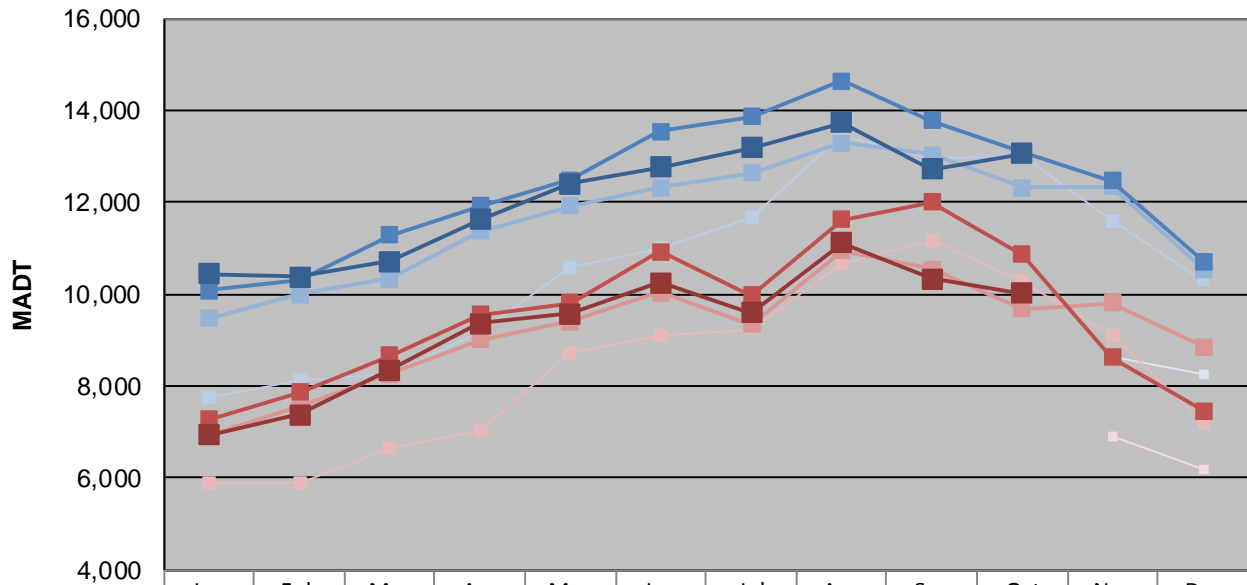
Station Measurement: VOLUME/SPEED/CLASS		
Route: TH 212	Route Direction: E/W	Lanes: 2
County: Carver		Closest City: Cologne
Functional Class: Rural Principal Arterial - Other		
Location: 1.7 MI W OF CSAH51, W OF COLOGNE		
Ref Post: 133+00.500	True Mile: 133.195	Sequence No. 9870
Volume: 373,953		MADT: 12,063
Weekday (M-F) MADT: 13,054		Weekend (Sa-Su) MADT: 10,018



Note: No data January to October 2007 due to sensors destroyed by construction... Increased traffic beginning August 2008 due to new TH 212 being opened



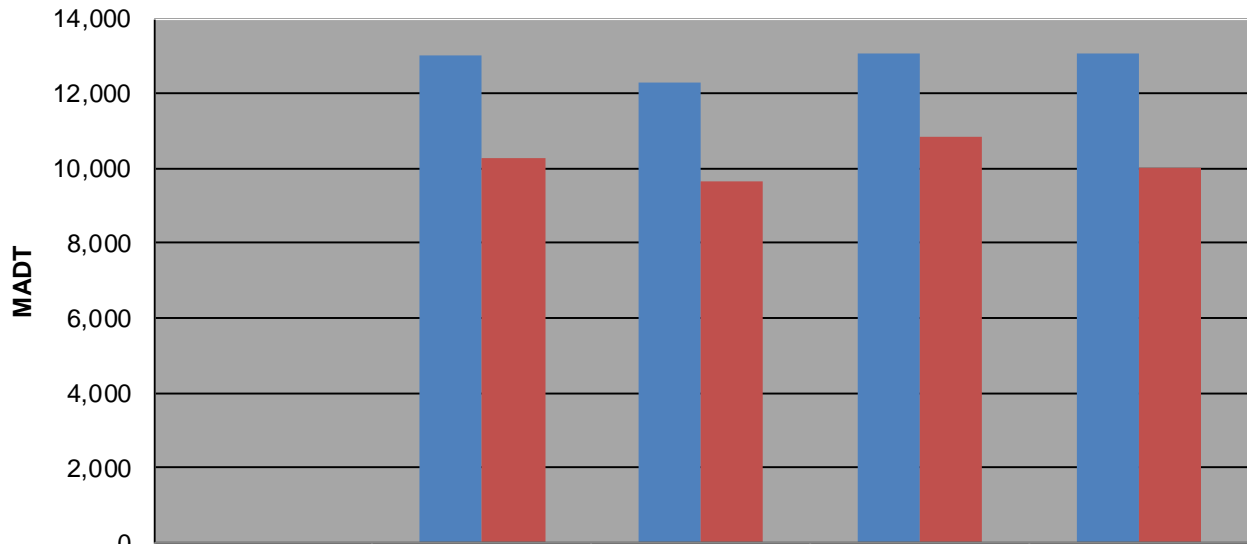
Weekday (WD)/Weekend (WE) Monthly Average Daily Traffic



	Jan	Feb	Mar	Apr	May	Jun	Jul	Aug	Sep	Oct	Nov	Dec
'07 WD											8,638	8,240
'07 WE											6,900	6,202
'08 WD	7,746	8,116	8,260	9,166	10,584	11,000	11,694	13,450	12,948	13,026	11,590	10,292
'08 WE	5,904	5,886	6,672	7,022	8,722	9,100	9,234	10,666	11,182	10,300	9,120	7,210
'09 WD	9,466	9,992	10,342	11,364	11,908	12,330	12,628	13,286	13,028	12,320	12,348	10,538
'09 WE	6,936	7,552	8,264	9,000	9,398	10,036	9,340	10,944	10,544	9,678	9,800	8,860
'10 WD	10,076	10,304	11,282	11,916	12,486	13,548	13,860	14,644	13,784	13,072	12,458	10,714
'10 WE	7,282	7,862	8,668	9,564	9,810	10,920	9,968	11,630	12,004	10,858	8,632	7,466
'11 WD	10,436	10,380	10,708	11,620	12,398	12,770	13,178	13,740	12,712	13,054		
'11 WE	6,946	7,376	8,360	9,372	9,582	10,258	9,596	11,112	10,326	10,018		

Note: 'Weekday' defined as Monday-Friday, 'Weekend' defined as Saturday-Sunday

Weekday/Weekend Monthly Average Daily Traffic ('07-'11)



	Oct-07	Oct-08	Oct-09	Oct-10	Oct-11
Weekday		13,026	12,320	13,072	13,054
Weekend		10,300	9,678	10,858	10,018