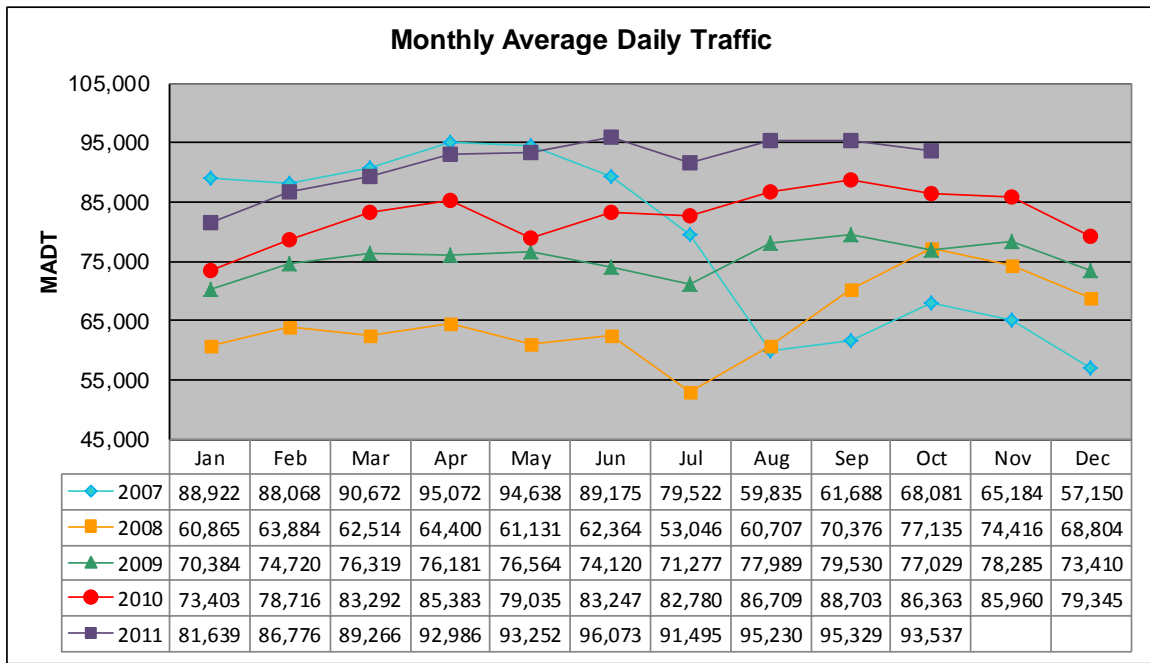


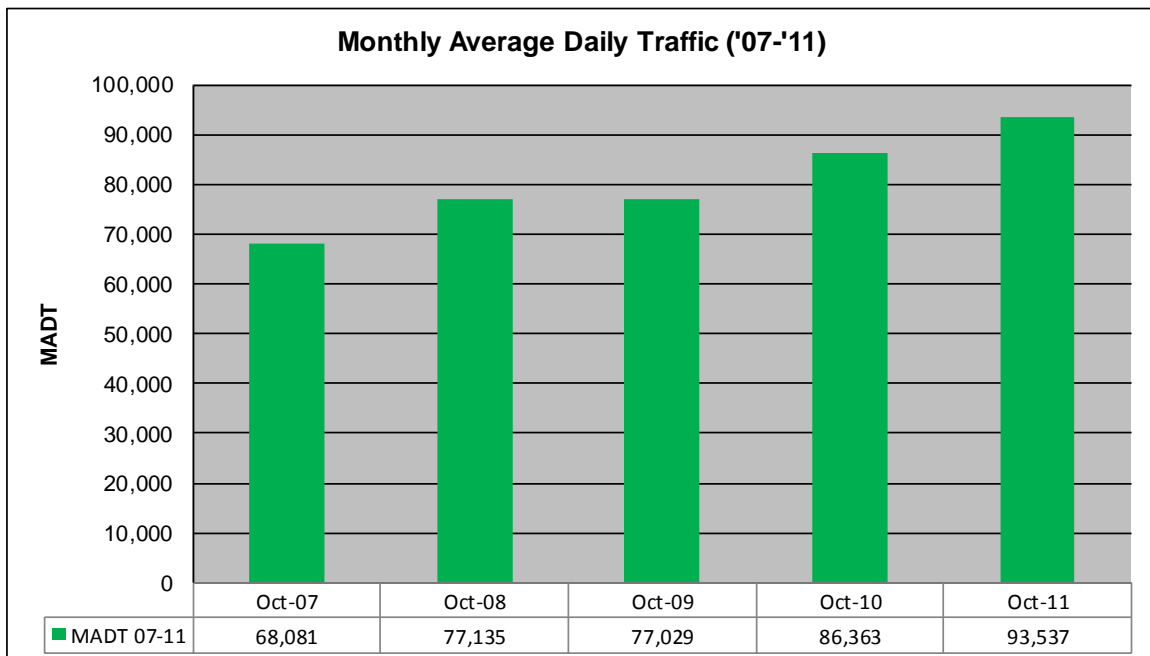
MONTHLY REPORT, STATION NO. 329 (ATR)

OCTOBER 2011

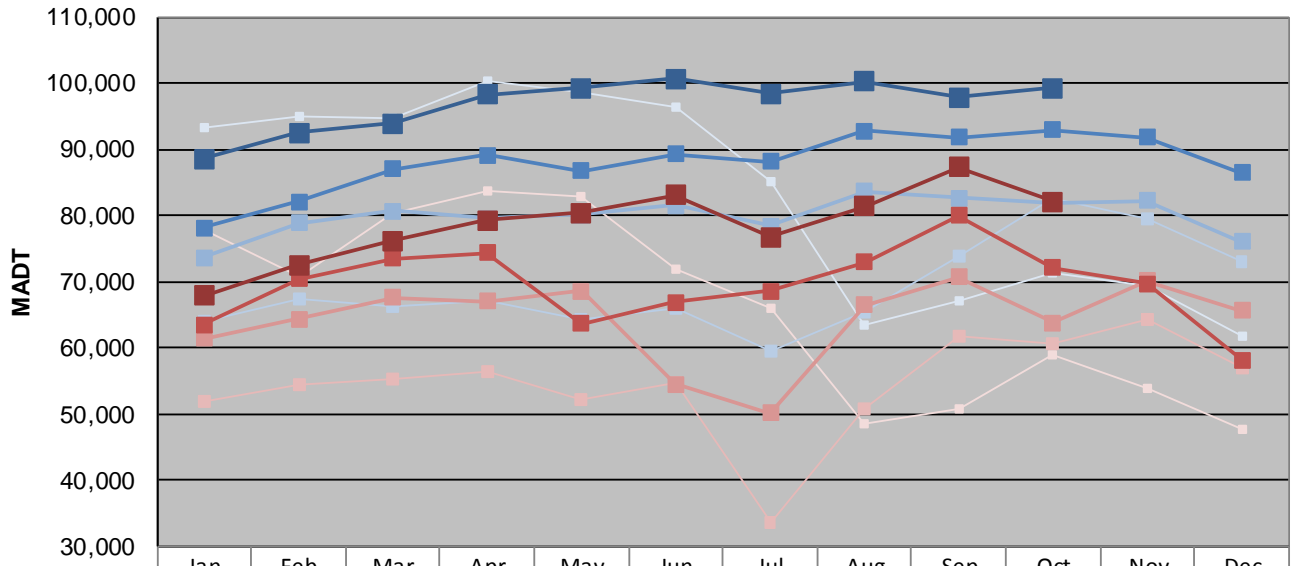
| | | |
|---|----------------------|-------------------------------------|
| Station Measurement: VOLUME | | |
| Route: I-35W | Route Direction: N/S | Lanes: 4 |
| County: Hennepin | | Closest City: Minneapolis |
| Functional Class: Urban Principal Arterial - Interstate | | |
| Location: AT FRANKLIN AVE IN MINNEAPOLIS | | |
| Ref Post: 016+00.680 | True Mile: 16.713 | Sequence No. 9851 |
| Volume: 2,899,661 | | MADT: 93,537 |
| Weekday (M-F) MADT: 99,206 | | Weekend (Sa-Su) MADT: 82,124 |



Note: Decrease in traffic 2007-2008 due to I-35W bridge collapse and construction on TH 62... Although traffic increased from 2008 to 2010, volumes were lower than expected due to construction on I-35W and TH 62



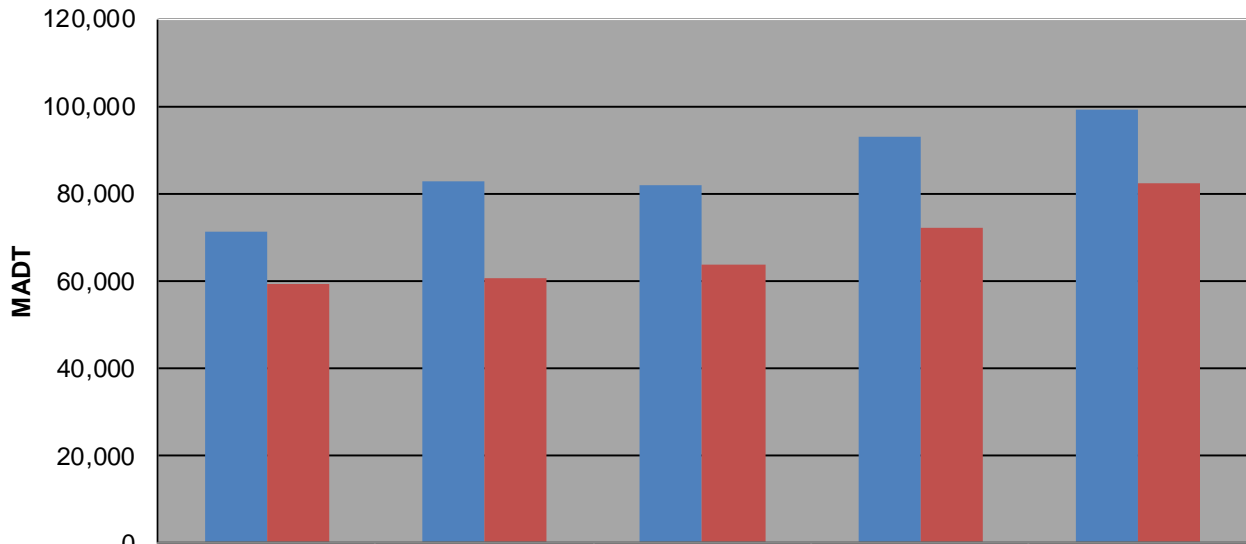
Weekday (WD)/Weekend (WE) Monthly Average Daily Traffic



| | Jan | Feb | Mar | Apr | May | Jun | Jul | Aug | Sep | Oct | Nov | Dec |
|--------|--------|--------|--------|---------|--------|---------|--------|---------|--------|--------|--------|--------|
| '07 WD | 93,258 | 94,978 | 94,736 | 100,382 | 98,528 | 96,372 | 85,228 | 63,450 | 67,186 | 71,412 | 69,350 | 61,770 |
| '07 WE | 77,784 | 70,792 | 80,418 | 83,842 | 82,842 | 71,836 | 66,088 | 48,640 | 50,692 | 59,070 | 53,910 | 47,748 |
| '08 WD | 64,032 | 67,314 | 66,120 | 67,232 | 64,390 | 65,908 | 59,580 | 65,396 | 73,858 | 82,598 | 79,432 | 73,054 |
| '08 WE | 51,788 | 54,398 | 55,402 | 56,508 | 52,156 | 54,712 | 33,592 | 50,722 | 61,686 | 60,640 | 64,382 | 56,834 |
| '09 WD | 73,624 | 78,856 | 80,656 | 79,486 | 80,108 | 81,476 | 78,416 | 83,572 | 82,682 | 82,000 | 82,248 | 76,098 |
| '09 WE | 61,414 | 64,382 | 67,556 | 66,998 | 68,620 | 54,458 | 50,160 | 66,456 | 70,740 | 63,792 | 70,142 | 65,614 |
| '10 WD | 78,096 | 82,048 | 86,962 | 89,154 | 86,764 | 89,258 | 88,106 | 92,770 | 91,742 | 92,876 | 91,866 | 86,482 |
| '10 WE | 63,564 | 70,390 | 73,548 | 74,326 | 63,606 | 66,826 | 68,514 | 72,936 | 79,972 | 72,130 | 69,724 | 58,100 |
| '11 WD | 88,592 | 92,444 | 93,910 | 98,328 | 99,206 | 100,688 | 98,396 | 100,272 | 97,848 | 99,206 | | |
| '11 WE | 67,902 | 72,578 | 76,222 | 79,264 | 80,366 | 83,088 | 76,702 | 81,358 | 87,258 | 82,124 | | |

Note: 'Weekday' defined as Monday-Friday, 'Weekend' defined as Saturday-Sunday

Weekday/Weekend Monthly Average Daily Traffic ('07-'11)



| | Oct-07 | Oct-08 | Oct-09 | Oct-10 | Oct-11 |
|---------|--------|--------|--------|--------|--------|
| Weekday | 71,412 | 82,598 | 82,000 | 92,876 | 99,206 |
| Weekend | 59,070 | 60,640 | 63,792 | 72,130 | 82,124 |